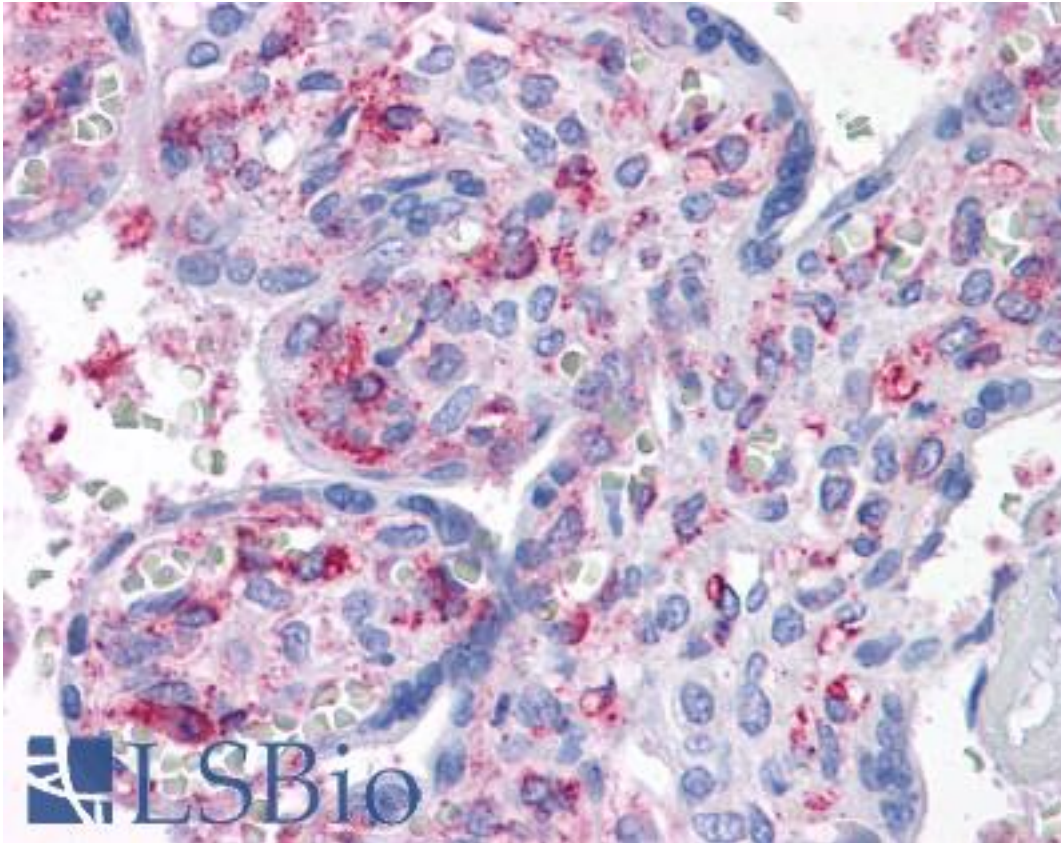


**CAB39L Mouse anti-Human Monoclonal (3B11-1A4) Antibody - LS-B4538 - LSBio**

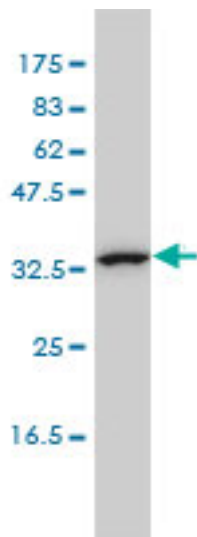
<b>CatalogID:</b>	LS-B4538
<b>Validation:</b>	This antibody replaces catalog number LS-C105182. It has been validated for use in the following assays: IHC-P.
<b>Target:</b>	calcium binding protein 39-like (CAB39L)
<b>Synonyms:</b>	CAB39L Antibody, Antigen MLAA-34 Antibody, BA103J18.3 Antibody, MO25-BETA Antibody, Mo25-like protein Antibody, MO2L Antibody, RP11-103J18.3 Antibody, Sarcoma antigen NY-SAR-79 Antibody, MO25beta Antibody, U937-associated antigen Antibody
<b>Host</b>	CAB39L antibody was produced in Mouse
<b>Clonality:</b>	Monoclonal
<b>Isotype:</b>	IgG1,k
<b>Clone Name:</b>	3B11-1A4
<b>Immunogen Species:</b>	CAB39L antibody was raised against Human
<b>Antigen Type:</b>	Recombinant protein
<b>Immunogen:</b>	CAB39L antibody was raised against cAB39L (AAH10993, 1 a.a. ~ 367 a.a) full length recombinant protein with GST tag. MW of the GST tag alone is 26 KDa.
<b>Reactivity:</b>	Human
<b>Purification:</b>	Protein A purified
<b>Presentation:</b>	PBS, pH 7.4
<b>Recommended Storage:</b>	Store at -20°C. Aliquot to avoid freeze/thaw cycles.
<b>Usage Summary:</b>	Western Blot (Cell lysate) - positive control K-562.
<b>Uses:</b>	IHC - Paraffin (10 µg/ml), Western blot, ELISA (Optimal dilution to be determined by the researcher)
<b>Size:</b>	50 µg
<b>Concentration:</b>	0.36 mg/ml

**Immunohistochemistry Image:**



Anti-CAB39L antibody IHC of human placenta. Immunohistochemistry of formalin-fixed, paraffin-embedded tissue after heat-induced antigen retrieval. Antibody LS-B4538 concentration 10 ug/ml.

**Western Blot Image:**



CAB39L monoclonal antibody, clone 3B11-1A4 Western blot of CAB39L expression in K-562.

**Requested From:**

Japan

Laboratory Reagent For In Vitro Research Use Only

Not for resale without prior written consent from LifeSpan BioSciences, Inc.

Created on 9/23/2014

© 2014 LifeSpan BioSciences