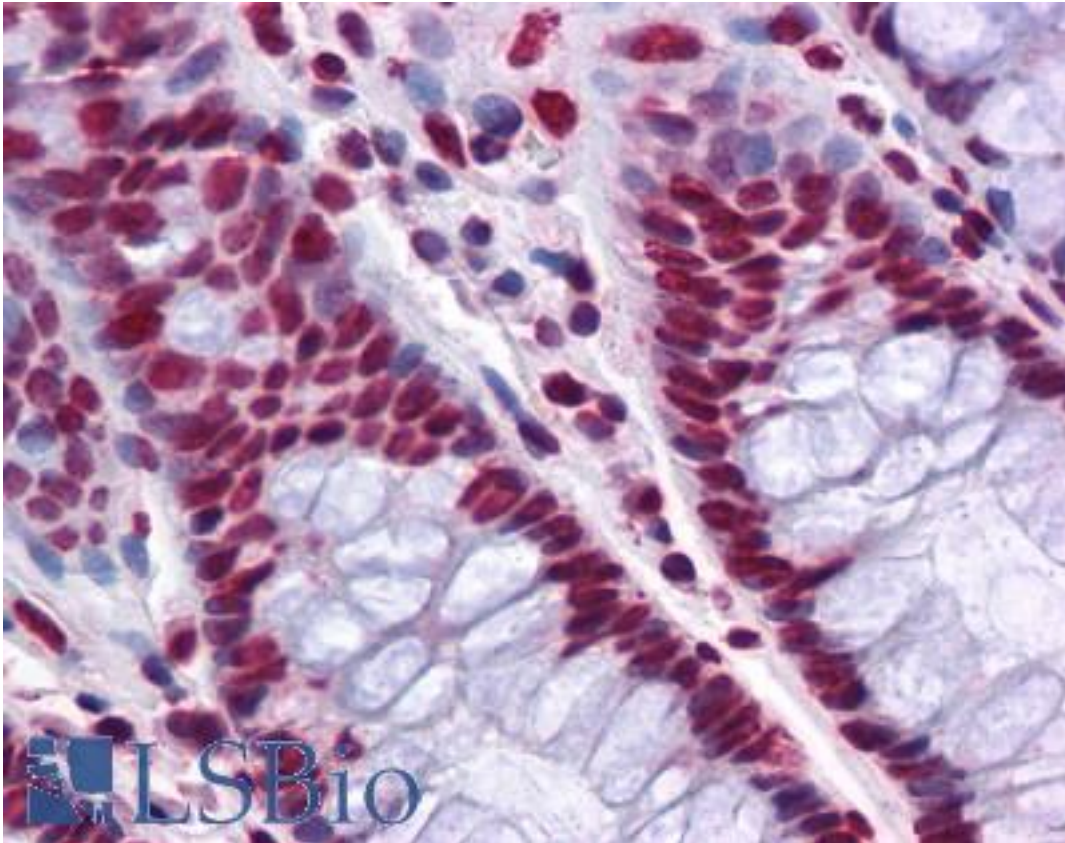


THOC6 Mouse anti-Human Monoclonal (1F6) Antibody - LS-B4536 - LSBio

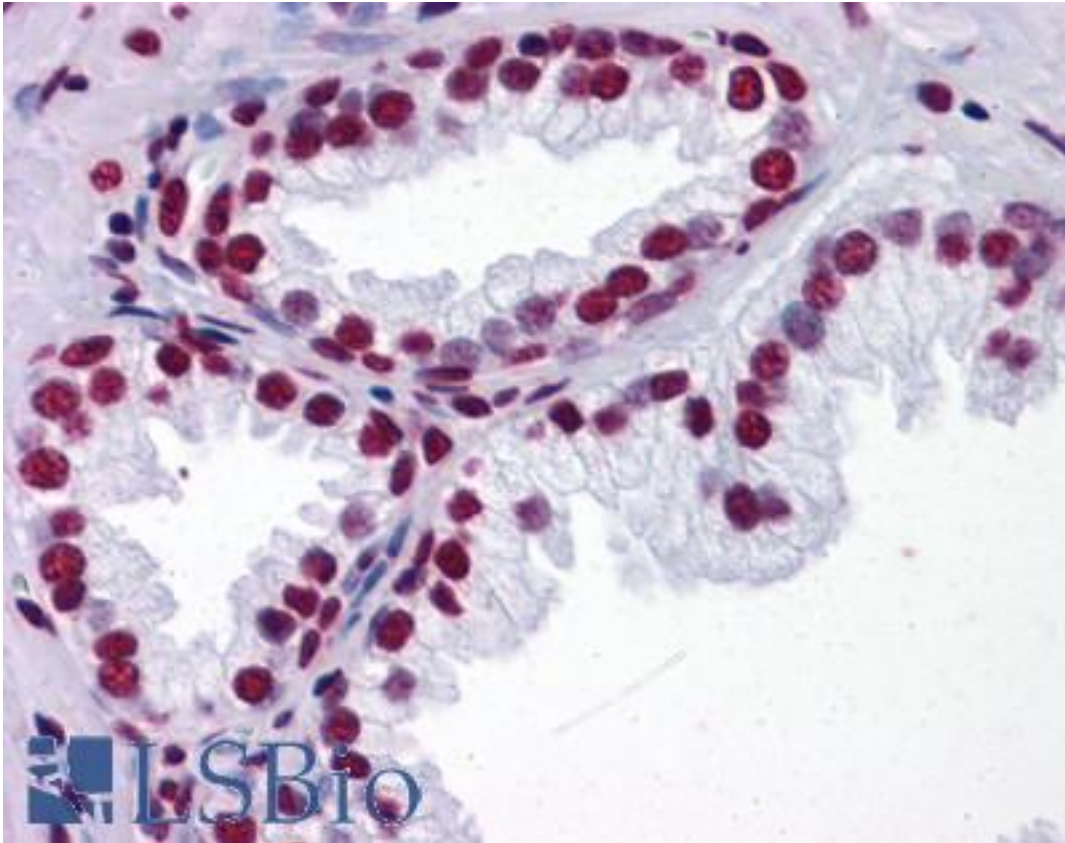
<b>CatalogID:</b>	LS-B4536
<b>Validation:</b>	This antibody replaces catalog number LS-C105175. It has been validated for use in the following assays: IHC-P.
<b>Target:</b>	THO complex 6 homolog (Drosophila) (THOC6)
<b>Synonyms:</b>	THOC6 Antibody, FSAP35 Antibody, WDR58 Antibody, WD repeat domain 58 Antibody, THO complex subunit 6 homolog Antibody
<b>Host</b>	THOC6 antibody was produced in Mouse
<b>Clonality:</b>	Monoclonal
<b>Isotype:</b>	IgG1,k
<b>Clone Name:</b>	1F6
<b>Immunogen Species:</b>	THOC6 antibody was raised against Human
<b>Antigen Type:</b>	Recombinant protein
<b>Immunogen:</b>	THOC6 antibody was raised against wDR58 (NP_077315, 71 a.a. ~ 181 a.a) partial recombinant protein with GST tag. MW of the GST tag alone is 26 KDa.
<b>Reactivity:</b>	Human, Rat
<b>Purification:</b>	Protein A purified
<b>Presentation:</b>	PBS, pH 7.4. Sourced in Ascites.
<b>Recommended Storage:</b>	Store at -20°C. Aliquot to avoid freeze/thaw cycles.
<b>Usage Summary:</b>	Western Blot (Cell lysate) - positive control PC-12. Western Blot (Cell lysate) - positive control A-431. Sandwich ELISA (Recombinant protein).
<b>Uses:</b>	IHC - Paraffin (5 µg/ml), Western blot, ELISA (Optimal dilution to be determined by the researcher)
<b>Size:</b>	50 µg
<b>Concentration:</b>	0.29 mg/ml

**Immunohistochemistry Image:**



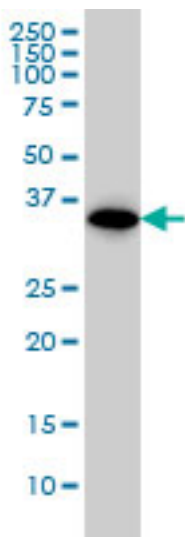
Anti-THOC6 / WDR58 antibody IHC of human colon. Immunohistochemistry of formalin-fixed, paraffin-embedded tissue after heat-induced antigen retrieval. Antibody LS-B4536 concentration 5 ug/ml.

**Immunohistochemistry Image:**



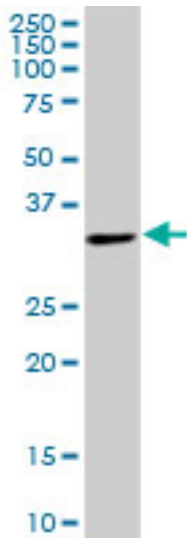
Anti-THOC6 / WDR58 antibody IHC of human prostate. Immunohistochemistry of formalin-fixed, paraffin-embedded tissue after heat-induced antigen retrieval. Antibody LS-B4536 concentration 5 ug/ml.

**Western Blot Image:**



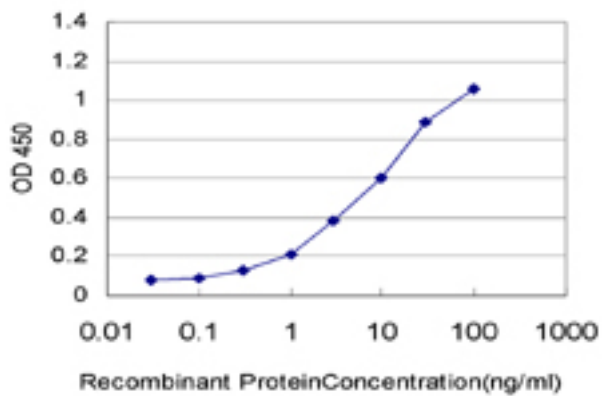
WDR58 monoclonal antibody, clone 1F6 Western blot of WDR58 expression in A-431.

**Western Blot Image:**



WDR58 monoclonal antibody, clone 1F6. Western blot of WDR58 expression in PC-12.

**ELISA Image:**



Detection limit for recombinant GST tagged WDR58 is approximately 0.3 ng/ml as a capture antibody.

**Requested From:**

Japan

Laboratory Reagent For In Vitro Research Use Only

Not for resale without prior written consent from LifeSpan BioSciences, Inc.

Created on 9/23/2014

© 2014 LifeSpan BioSciences