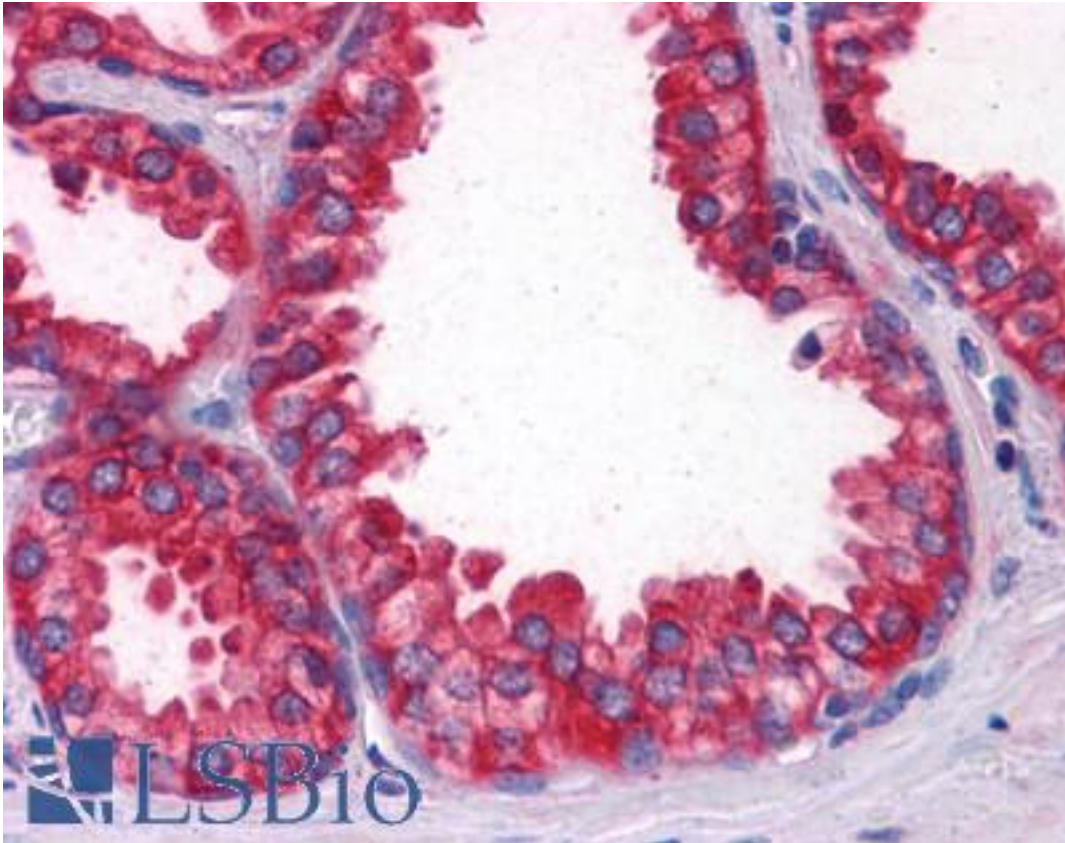


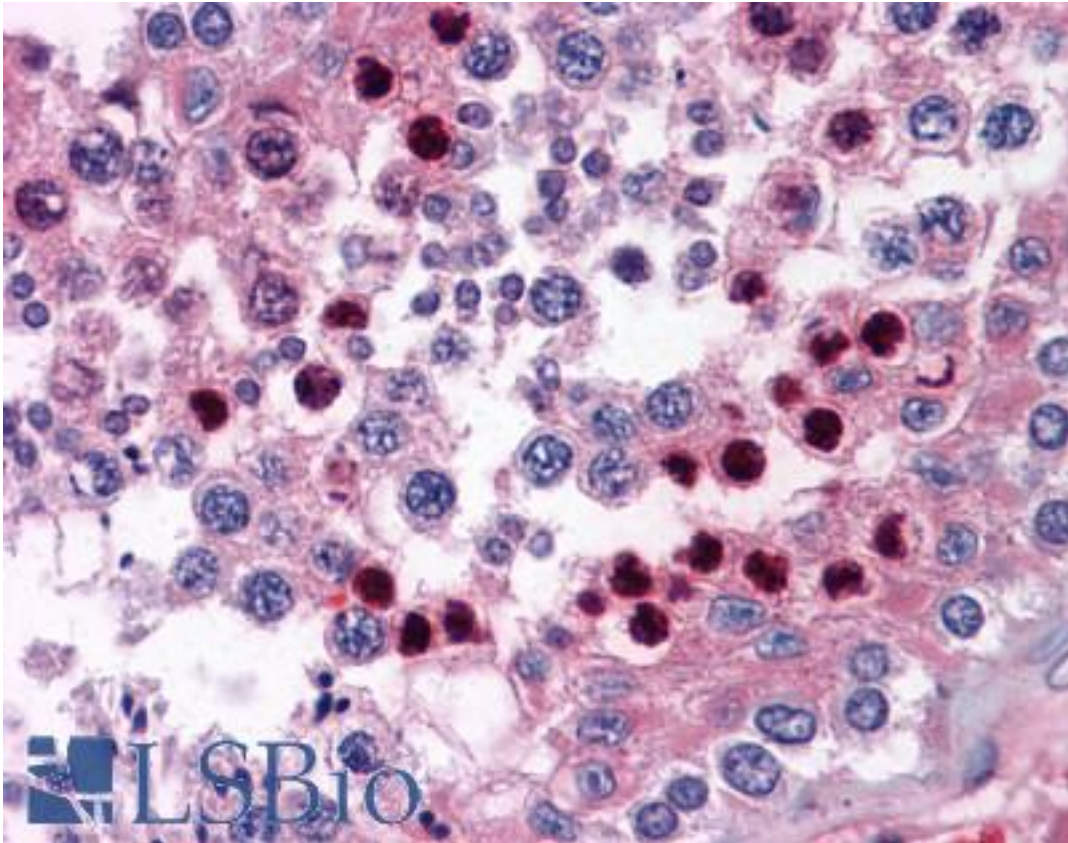
CORO1B Mouse anti-Human Monoclonal (1E7) Antibody - LS-B4533 - LSBio	
CatalogID:	LS-B4533
Validation:	This antibody replaces catalog number LS-C105165. It has been validated for use in the following assays: IHC-P.
Target:	coronin, actin binding protein, 1B (CORO1B)
Synonyms:	CORO1B Antibody, Coronin-1B Antibody, CORONIN-2 Antibody
Host	CORO1B antibody was produced in Mouse
Clonality:	Monoclonal
Isotype:	IgG1,k
Clone Name:	1E7
Immunogen Species:	CORO1B antibody was raised against Human
Antigen Type:	Recombinant protein
Immunogen:	CORO1B antibody was raised against cORO1B (AAH06449, 1 a.a. ~ 490 a.a) full length recombinant protein with GST tag. MW of the GST tag alone is 26 KDa.
Reactivity:	Human
Purification:	Protein A purified
Presentation:	PBS, pH 7.2. Sourced in Ascites.
Recommended Storage:	Store at -20°C. Aliquot to avoid freeze/thaw cycles.
Usage Summary:	Western Blot (Cell lysate) - positive control HeLa NE. Sandwich ELISA (Recombinant protein).
Uses:	IHC - Paraffin (5 µg/ml), Western blot, ELISA (Optimal dilution to be determined by the researcher)
Size:	50 µg
Concentration:	0.46 mg/ml

Immunohistochemistry Image:



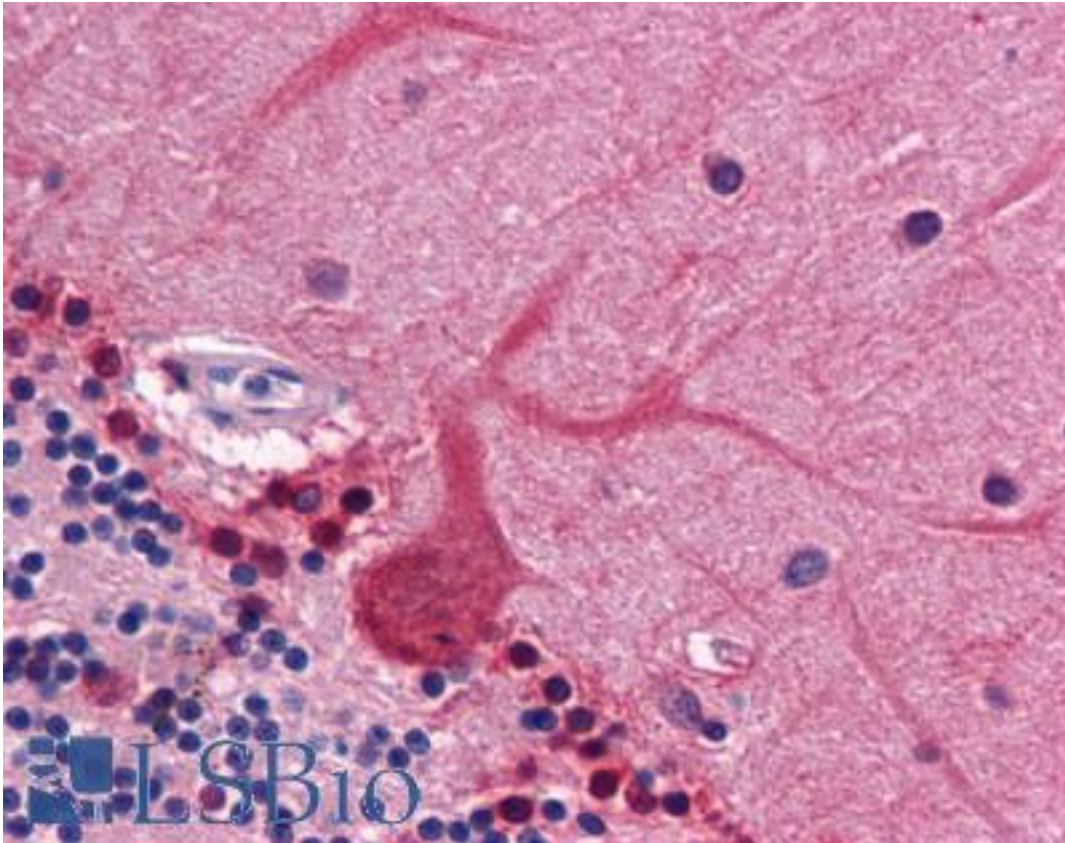
Anti-CORO1B antibody IHC of human prostate. Immunohistochemistry of formalin-fixed, paraffin-embedded tissue after heat-induced antigen retrieval. Antibody LS-B4533 concentration 5 ug/ml.

Immunohistochemistry Image:



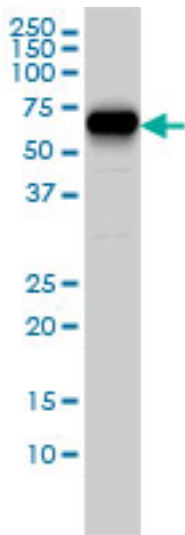
Anti-CORO1B antibody IHC of human testis. Immunohistochemistry of formalin-fixed, paraffin-embedded tissue after heat-induced antigen retrieval. Antibody LS-B4533 concentration 5 ug/ml.

Immunohistochemistry Image:



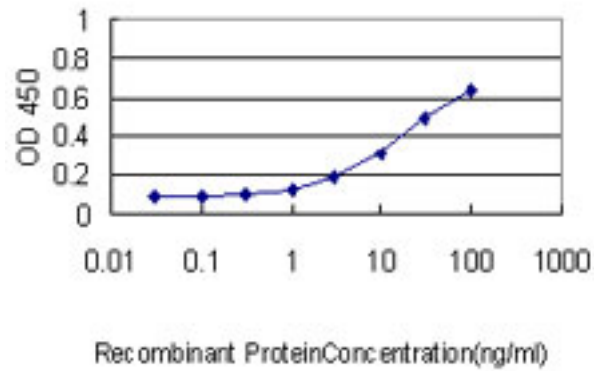
Anti-CORO1B antibody IHC of human brain, cerebellum. Immunohistochemistry of formalin-fixed, paraffin-embedded tissue after heat-induced antigen retrieval. Antibody LS-B4533 concentration 5 ug/ml.

Western Blot Image:



CORO1B monoclonal antibody, clone 1E7 Western blot of CORO1B expression in HeLa NE.

ELISA Image:



Detection limit for recombinant GST tagged CORO1B is approximately 0.3 ng/ml as a capture antibody.

Requested From:

Japan

Laboratory Reagent For In Vitro Research Use Only

Not for resale without prior written consent from LifeSpan BioSciences, Inc.

Created on 9/23/2014

© 2014 LifeSpan BioSciences