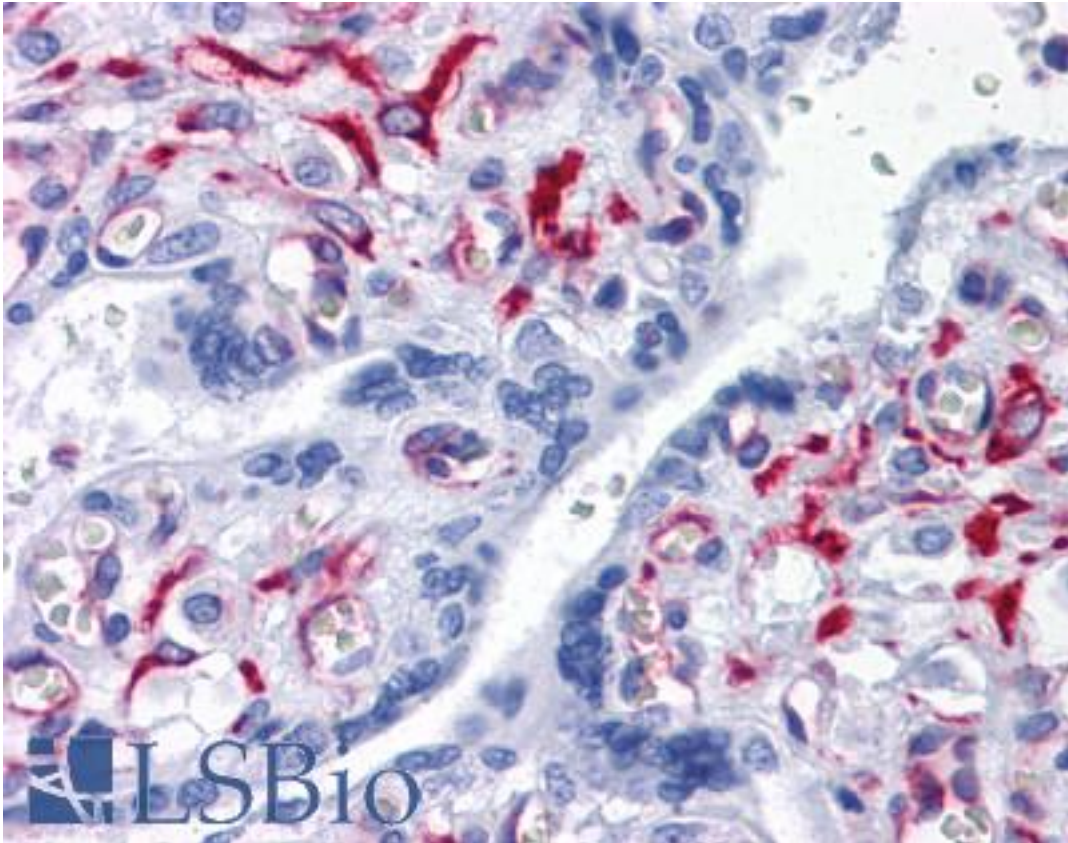


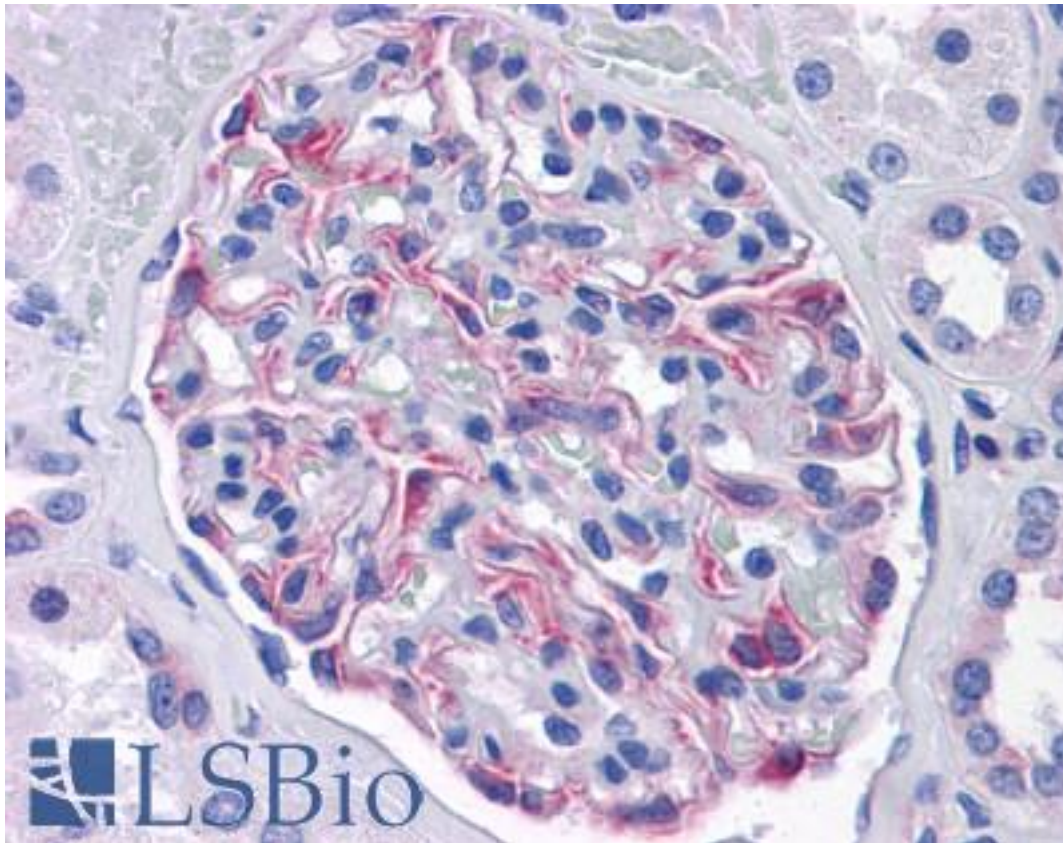
| SLC44A2 / CTL2 Mouse anti-Human Monoclonal (3D11) Antibody - LS-B4532 - LSBio | |
|---|---|
| CatalogID: | LS-B4532 |
| Validation: | This antibody replaces catalog number LS-C105163. It has been validated for use in the following assays: IHC-P. |
| Target: | solute carrier family 44 (choline transporter), member 2 (SLC44A2) |
| Synonyms: | SLC44A2 Antibody, CTL2 Antibody, PP1292 Antibody |
| Family / Subfamily: | Transporter / Choline transporter-like |
| Host | SLC44A2 antibody was produced in Mouse |
| Clonality: | Monoclonal |
| Isotype: | IgG1,k |
| Clone Name: | 3D11 |
| Immunogen Species: | SLC44A2 / CTL2 antibody was raised against Human |
| Antigen Type: | Recombinant protein |
| Immunogen: | SLC44A2 / CTL2 antibody was raised against cTL2 (AAH40556, 123 a.a. ~ 231 a.a) partial recombinant protein with GST tag. MW of the GST tag alone is 26 KDa. |
| Reactivity: | Human |
| Purification: | Protein A purified |
| Presentation: | PBS, pH 7.4. Sourced in Ascites. |
| Recommended Storage: | Store at -20°C. Aliquot to avoid freeze/thaw cycles. |
| Usage Summary: | Tested in Western blot using the recombinant protein immunogen as the protein source. Sandwich ELISA (Recombinant protein). |
| Uses: | IHC - Paraffin (10 µg/ml), Western blot, ELISA (Optimal dilution to be determined by the researcher) |
| Size: | 50 µg |
| Concentration: | 0.5 mg/ml |

Immunohistochemistry Image:



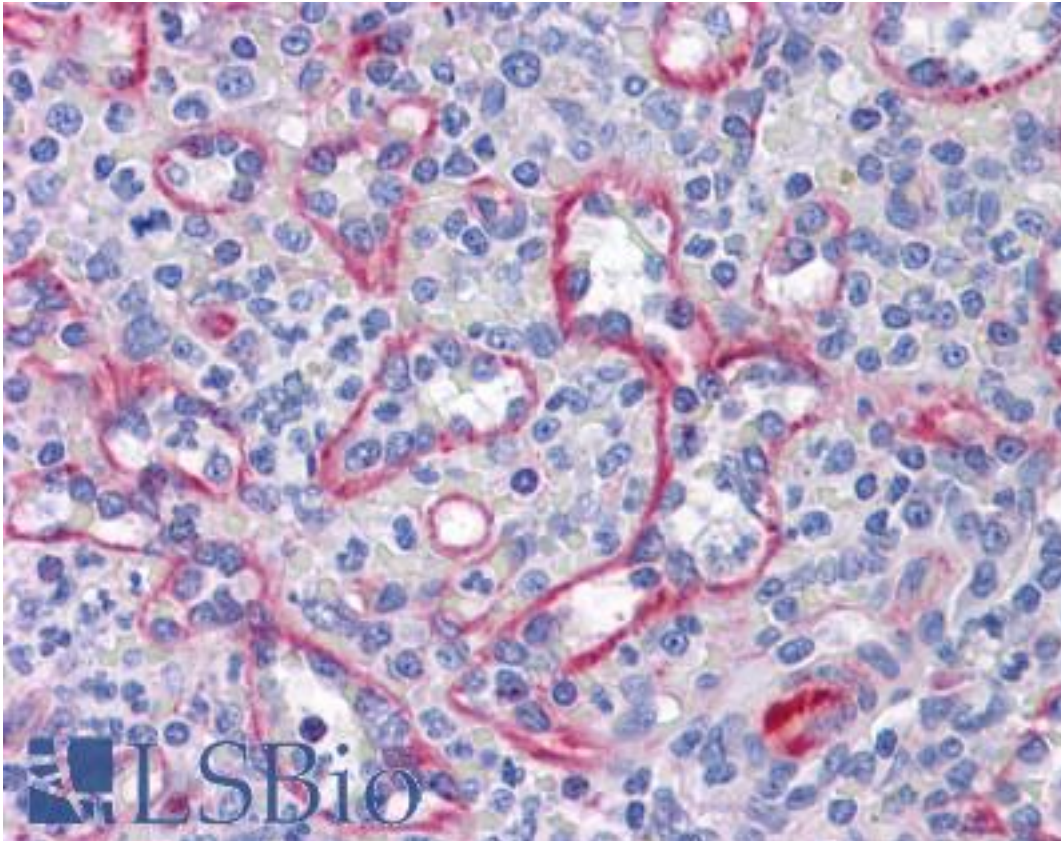
Anti-SLC44A2 antibody IHC of human placenta. Immunohistochemistry of formalin-fixed, paraffin-embedded tissue after heat-induced antigen retrieval. Antibody LS-B4532 concentration 10 ug/ml.

Immunohistochemistry Image:



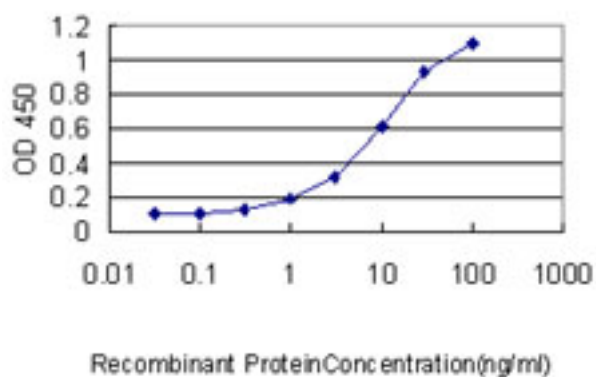
Anti-SLC44A2 antibody IHC of human kidney. Immunohistochemistry of formalin-fixed, paraffin-embedded tissue after heat-induced antigen retrieval. Antibody LS-B4532 concentration 10 ug/ml.

Immunohistochemistry Image:



Anti-SLC44A2 antibody IHC of human spleen. Immunohistochemistry of formalin-fixed, paraffin-embedded tissue after heat-induced antigen retrieval. Antibody LS-B4532 concentration 10 ug/ml.

ELISA Image:



Detection limit for recombinant GST tagged SLC44A2 is approximately 0.3 ng/ml as a capture antibody.

Requested From:

Japan

Laboratory Reagent For In Vitro Research Use Only

Not for resale without prior written consent from LifeSpan BioSciences, Inc.

Created on 9/23/2014

© 2014 LifeSpan BioSciences