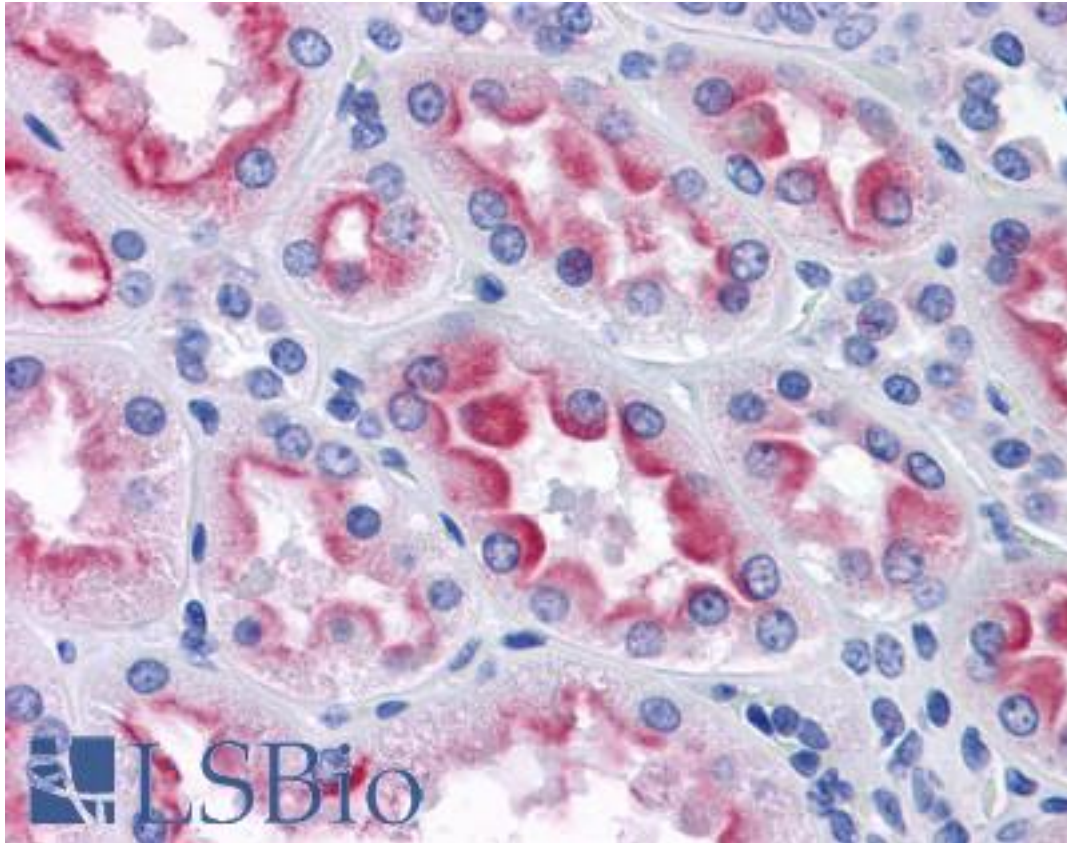


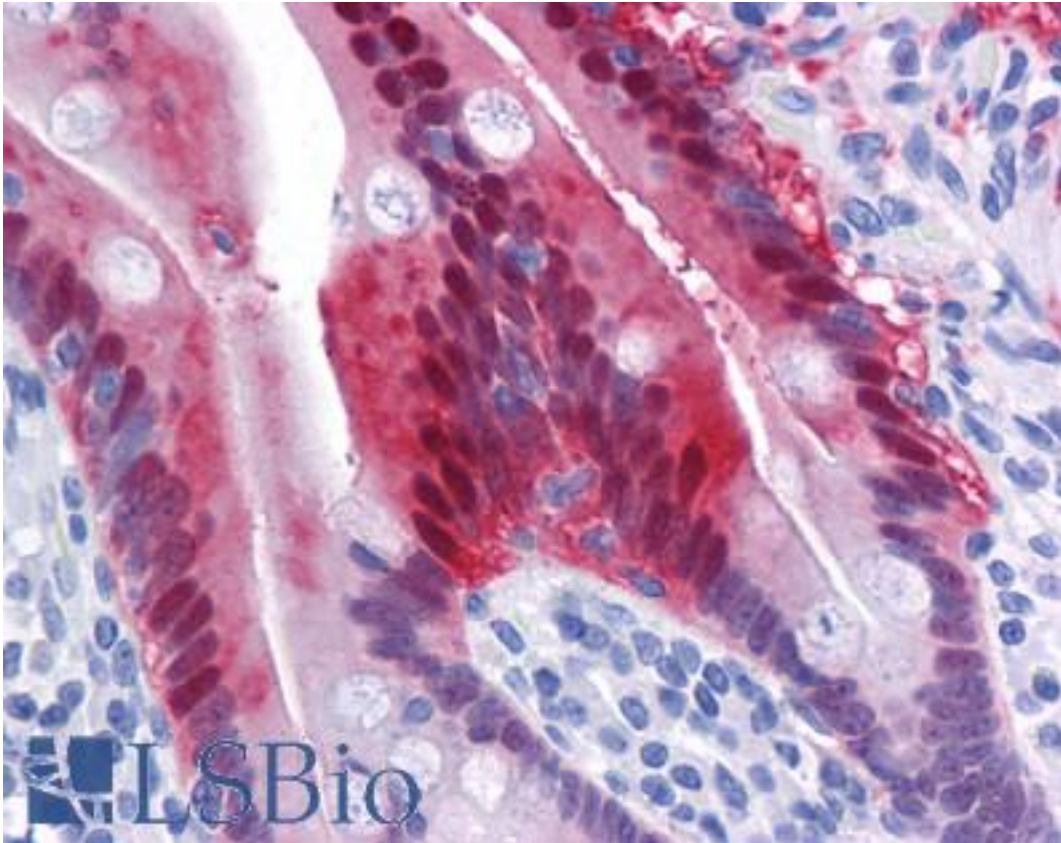
AKR1B10 Mouse anti-Human Monoclonal (1A6) Antibody - LS-B4531 - LSBio	
CatalogID:	LS-B4531
Validation:	This antibody replaces catalog number LS-C105162. It has been validated for use in the following assays: IHC-P.
Target:	aldo-keto reductase family 1, member B10 (aldose reductase) (AKR1B10)
Synonyms:	AKR1B10 Antibody, AKR1B11 Antibody, Aldose reductase-like peptide Antibody, ALDRLn Antibody, AKR1B12 Antibody, Aldose reductase-like Antibody, Aldose reductase-like 1 Antibody, ARP Antibody, HARP Antibody, HSI Antibody, Small intestine reductase Antibody, ARL-1 Antibody, SI reductase Antibody
Host	AKR1B10 antibody was produced in Mouse
Clonality:	Monoclonal
Isotype:	IgG2a,k
Clone Name:	1A6
Immunogen Species:	AKR1B10 antibody was raised against Human
Antigen Type:	Recombinant protein
Immunogen:	AKR1B10 antibody was raised against aKR1B10 (NP_064695, 76 a.a. ~ 144 a.a) partial recombinant protein with GST tag. MW of the GST tag alone is 26 KDa.
Reactivity:	Human
Purification:	Protein A purified
Presentation:	PBS, pH 7.2. Sourced in Ascites.
Recommended Storage:	Store at -20°C. Aliquot to avoid freeze/thaw cycles.
Usage Summary:	Western Blot (Cell lysate) - positive control HepG2. Immunofluorescence (10 ug/ml) - positive control HeLa cells. Sandwich ELISA (Recombinant protein).
Uses:	IHC - Paraffin (5 µg/ml), Immunofluorescence (10 µg/ml), Western blot, ELISA (Optimal dilution to be determined by the researcher)
Size:	50 µg
Concentration:	0.5 mg/ml

Immunohistochemistry Image:



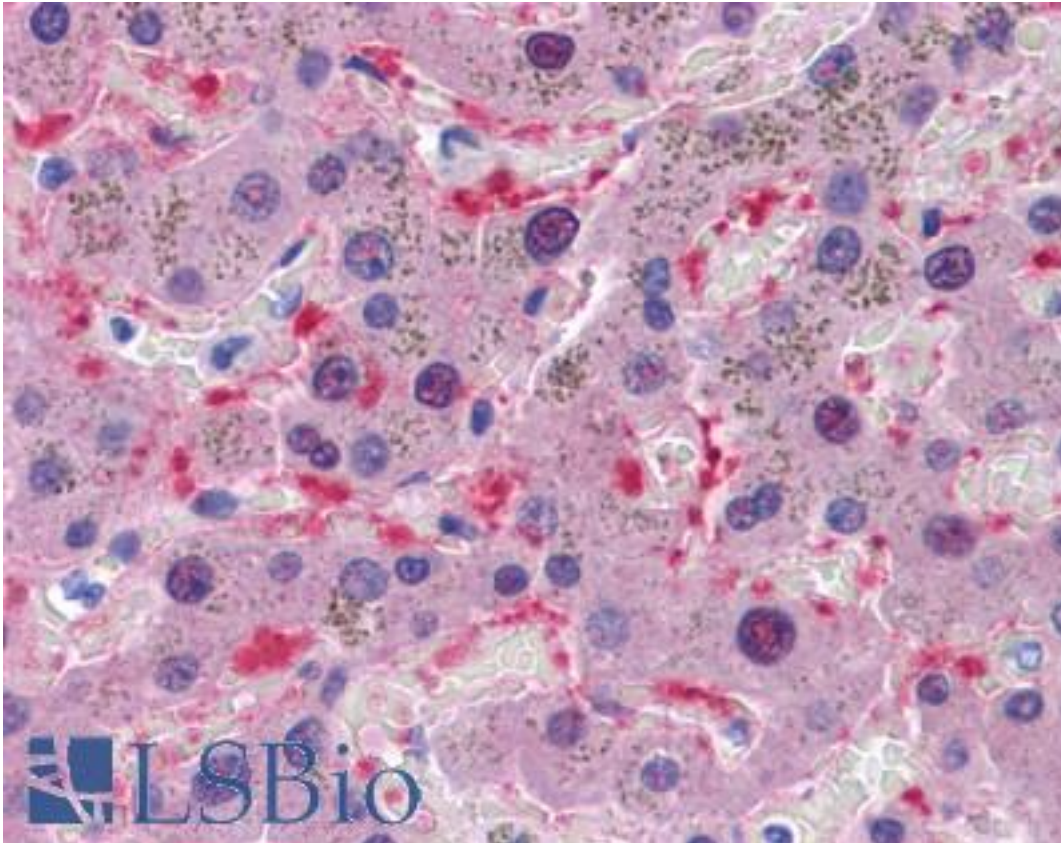
Anti-AKR1B10 antibody IHC of human kidney. Immunohistochemistry of formalin-fixed, paraffin-embedded tissue after heat-induced antigen retrieval. Antibody LS-B4531 concentration 5 ug/ml.

Immunohistochemistry Image:



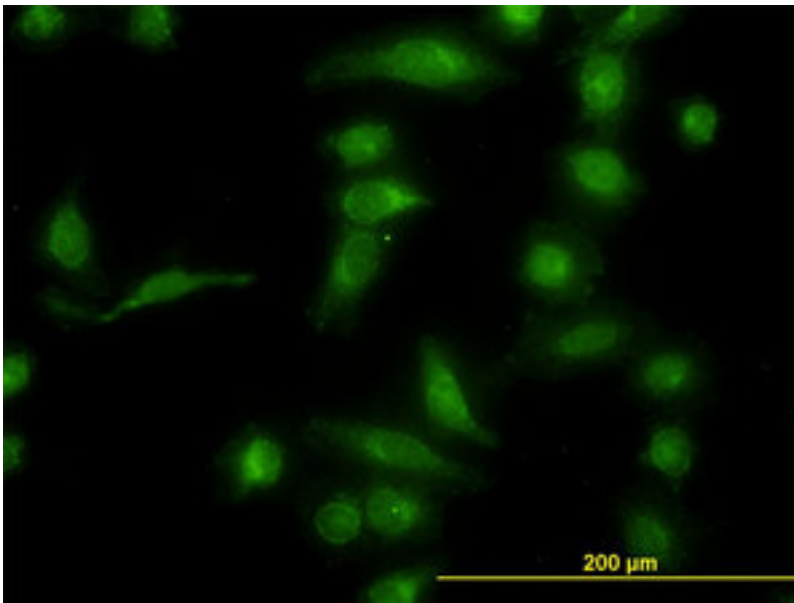
Anti-AKR1B10 antibody IHC of human small intestine. Immunohistochemistry of formalin-fixed, paraffin-embedded tissue after heat-induced antigen retrieval. Antibody LS-B4531 concentration 5 ug/ml.

Immunohistochemistry Image:



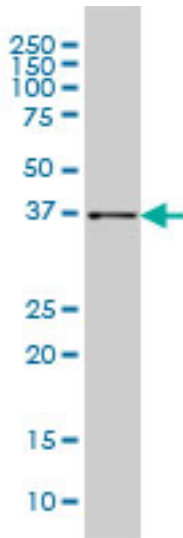
Anti-AKR1B10 antibody IHC of human liver. Immunohistochemistry of formalin-fixed, paraffin-embedded tissue after heat-induced antigen retrieval. Antibody LS-B4531 concentration 5 ug/ml.

Immunofluorescence Image:



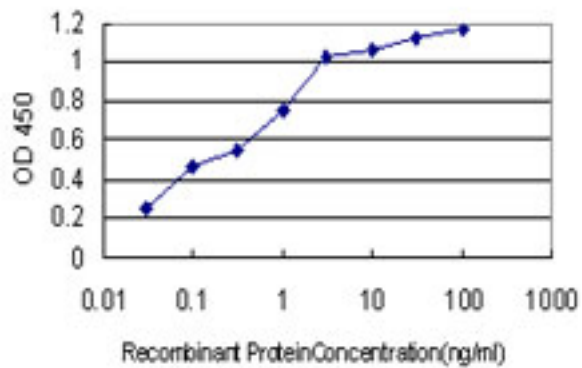
Immunofluorescence of monoclonal antibody to AKR1B10 on HeLa cell (antibody concentration 10 ug/ml).

Western Blot Image:



AKR1B10 monoclonal antibody, clone 1A6 Western blot of AKR1B10 expression in HepG2.

ELISA Image:



Detection limit for recombinant GST tagged AKR1B10 is approximately 0.03 ng/ml as a capture antibody.

Requested From:

Japan

Laboratory Reagent For In Vitro Research Use Only

Not for resale without prior written consent from LifeSpan BioSciences, Inc.

Created on 9/23/2014

© 2014 LifeSpan BioSciences