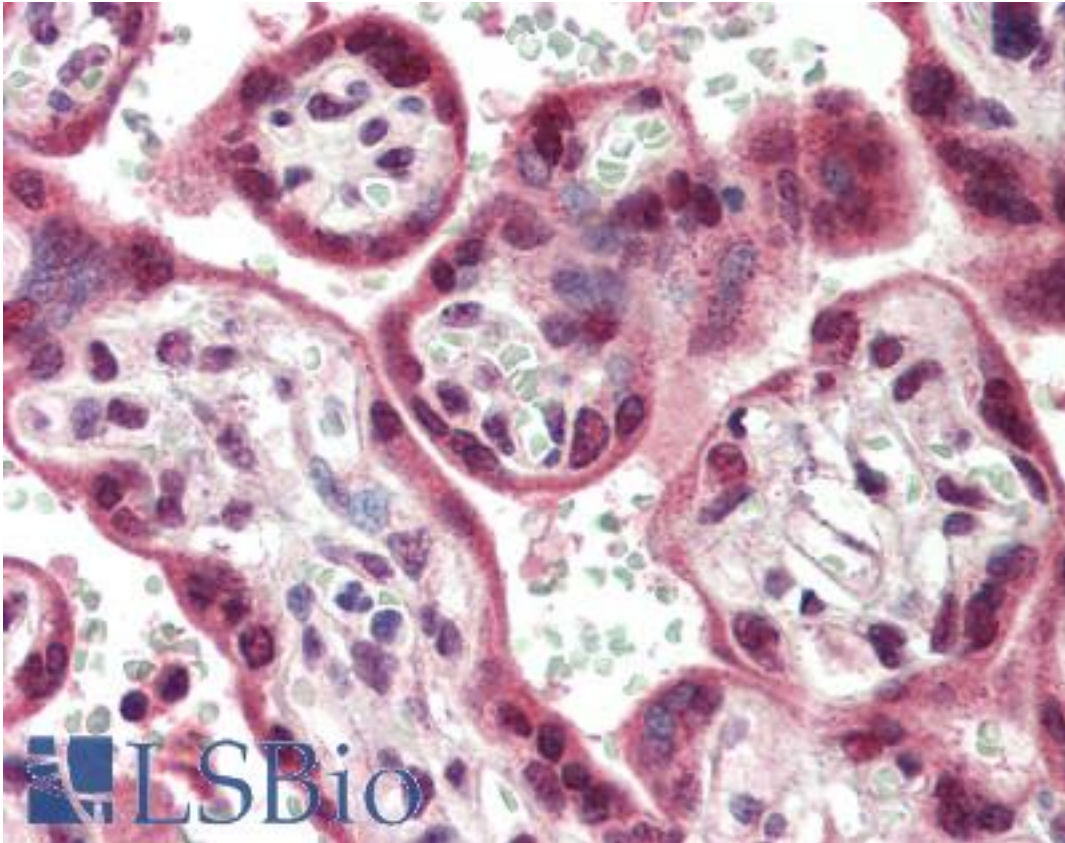


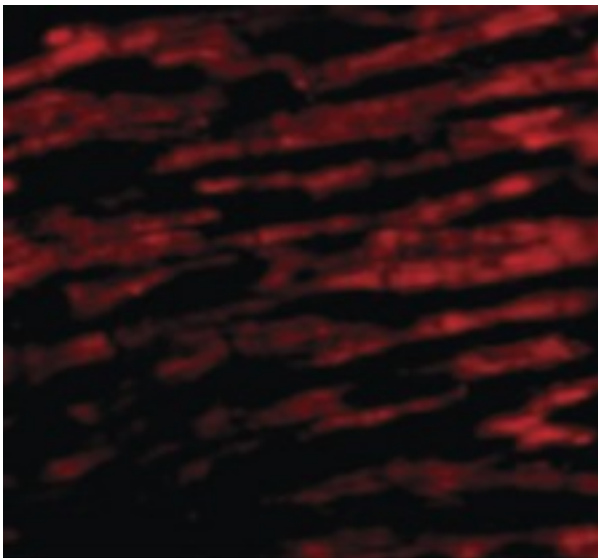
BCL2L13 / Bcl Rambo Rabbit anti-Human Polyclonal (Internal) Antibody - LS-B453 - LSBio	
CatalogID:	LS-B453
Validation:	This antibody replaces catalog number LS-C416. It has been validated for use in the following assays: IHC.
Target:	BCL2-like 13 (apoptosis facilitator) (BCL2L13)
Synonyms:	BCL2L13 Antibody, BCL-RAMBO Antibody, Bcl-2-like protein 13 Antibody, Protein Mil1 Antibody, Bcl2-L-13 Antibody, MIL1 Antibody
Family / Subfamily:	Apoptosis
Host	BCL2L13 antibody was produced in Rabbit
Clonality:	Polyclonal
Immunogen Species:	BCL2L13 / Bcl Rambo antibody was raised against Human
Antigen Type:	Synthetic peptide
Immunogen:	BCL2L13 / Bcl Rambo antibody was raised against synthetic peptide from human BCL2L13 / Bcl Rambo.
Specificity:	15 amino acid peptide from near the center of human Bcl-rambo
Epitope:	Internal
Reactivity:	Human, Mouse, Rat
Purification:	Immunoaffinity purified
Presentation:	PBS, 0.02% sodium azide.
Recommended Storage:	Short term 4°C, long term aliquot and store at -20°C, avoid freeze thaw cycles. Store undiluted.
Usage Summary:	Immunohistochemistry: LS-B453 was validated for use in immunohistochemistry on a panel of 21 formalin-fixed, paraffin-embedded (FFPE) human tissues after heat induced antigen retrieval in pH 6.0 citrate buffer. After incubation with the primary antibody, slides were incubated with biotinylated secondary antibody, followed by alkaline phosphatase-streptavidin and chromogen. The stained slides were evaluated by a pathologist to confirm staining specificity. The optimal working concentration for LS-B453 was determined to be 5 ug/ml.
Uses:	IHC - Paraffin (5 µg/ml), Western blot (2 µg/ml) (Optimal dilution to be determined by the researcher)
Size:	50 µg
Concentration:	1 mg/ml

Immunohistochemistry Image:



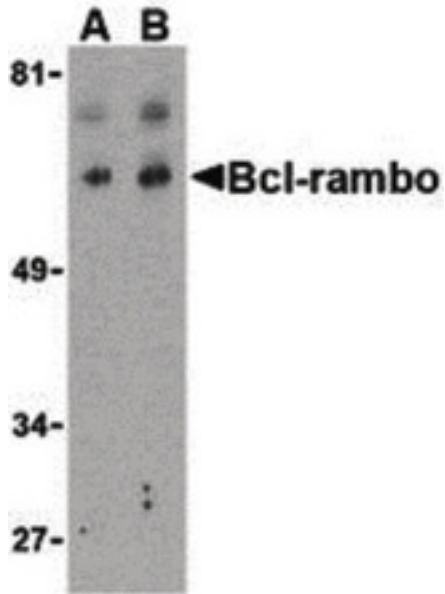
Anti-BCL2L13 / Bcl Rambo antibody IHC of human placenta. Immunohistochemistry of formalin-fixed, paraffin-embedded tissue after heat-induced antigen retrieval. Antibody LS-B453 concentration 5 ug/ml.

Immunofluorescence Image:



Immunofluorescence of Bcl-rambo in Human Heart cells with Bcl-rambo antibody at 20 ug/ml.

Western Blot Image:



Western blot of Bcl-rambo in K562 cell lysate with Bcl-rambo antibody at (A) 2 and (B) 4 ug/ml.

Requested From:

Japan

Laboratory Reagent For In Vitro Research Use Only

Not for resale without prior written consent from LifeSpan BioSciences, Inc.

Created on 9/23/2014

© 2014 LifeSpan BioSciences