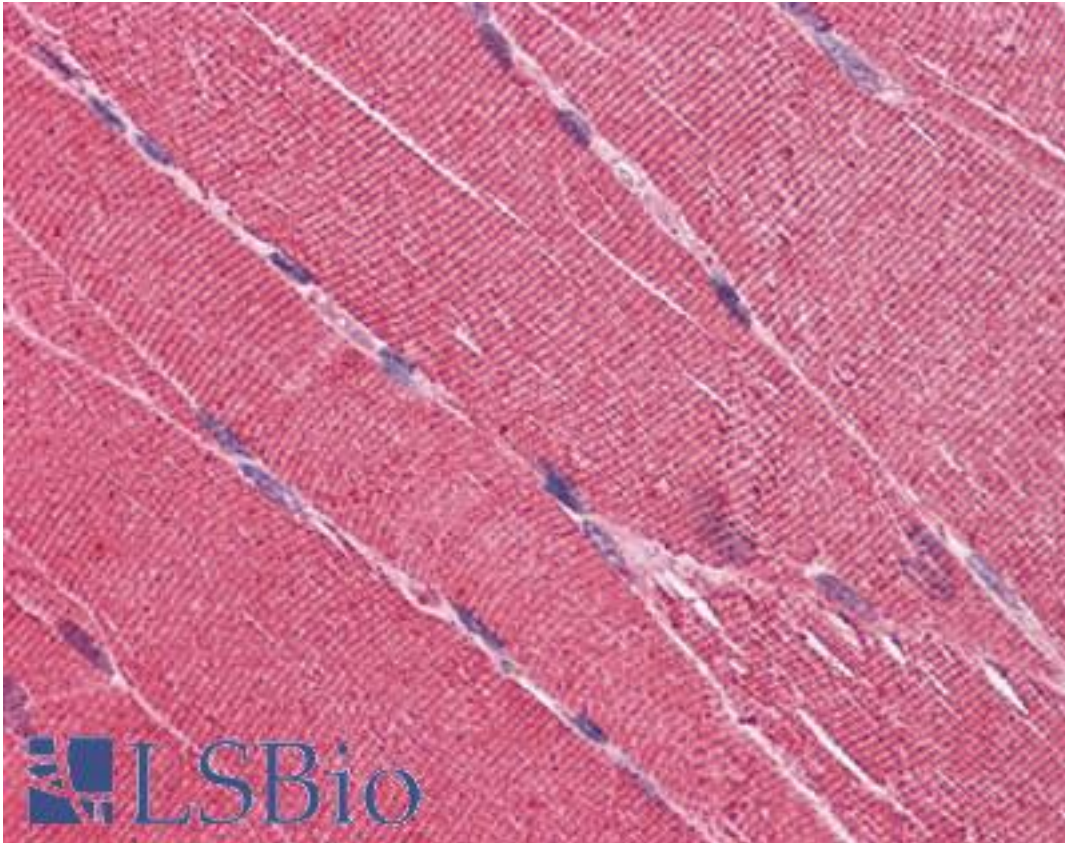


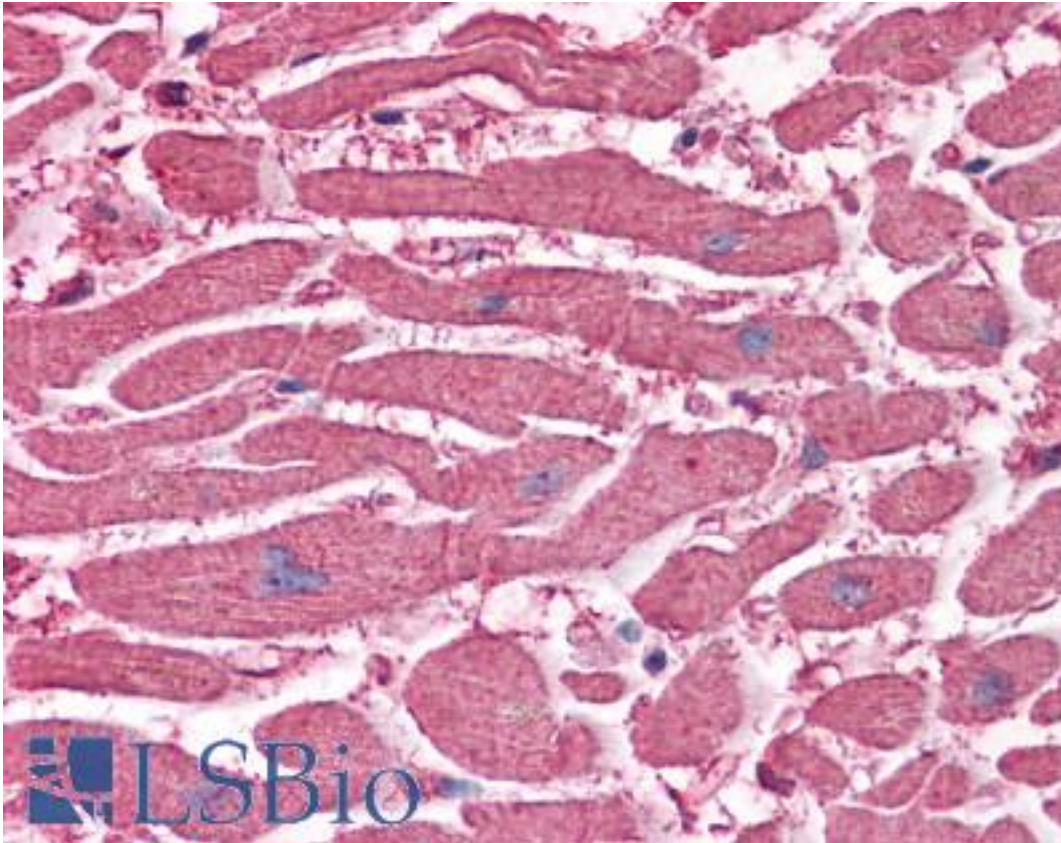
EDEM2 Mouse anti-Human Monoclonal (2E4) Antibody - LS-B4529 - LSBio	
CatalogID:	LS-B4529
Validation:	This antibody replaces catalog number LS-C105156. It has been validated for use in the following assays: IHC-P.
Target:	ER degradation enhancer, mannosidase alpha-like 2 (EDEM2)
Synonyms:	EDEM2 Antibody, BA4204.1 Antibody, C20orf49 Antibody, C20orf31 Antibody
Host	EDEM2 antibody was produced in Mouse
Clonality:	Monoclonal
Isotype:	IgG1,k
Clone Name:	2E4
Immunogen Species:	EDEM2 antibody was raised against Human
Antigen Type:	Recombinant protein
Immunogen:	EDEM2 antibody was raised against c20orf31 (NP_060687, 479 a.a. ~ 579 a.a) partial recombinant protein with GST tag. MW of the GST tag alone is 26 KDa.
Reactivity:	Human
Purification:	Protein A purified
Presentation:	PBS, pH 7.2. Sourced in Ascites.
Recommended Storage:	Store at -20°C. Aliquot to avoid freeze/thaw cycles.
Usage Summary:	Tested in Western blot using the recombinant protein immunogen as the protein source.
Uses:	IHC - Paraffin (2.5 µg/ml), Western blot, ELISA (Optimal dilution to be determined by the researcher)
Size:	50 µg
Concentration:	0.5 mg/ml

Immunohistochemistry Image:



Anti-EDEM2 / C20orf31 antibody IHC of human skeletal muscle. Immunohistochemistry of formalin-fixed, paraffin-embedded tissue after heat-induced antigen retrieval. Antibody LS-B4529 concentration 2.5 ug/ml.

Immunohistochemistry Image:



Anti-EDEM2 / C20orf31 antibody IHC of human heart. Immunohistochemistry of formalin-fixed, paraffin-embedded tissue after heat-induced antigen retrieval. Antibody LS-B4529 concentration 2.5 ug/ml.

Requested From:

Japan

Laboratory Reagent For In Vitro Research Use Only

Not for resale without prior written consent from LifeSpan BioSciences, Inc.

Created on 9/23/2014

© 2014 LifeSpan BioSciences