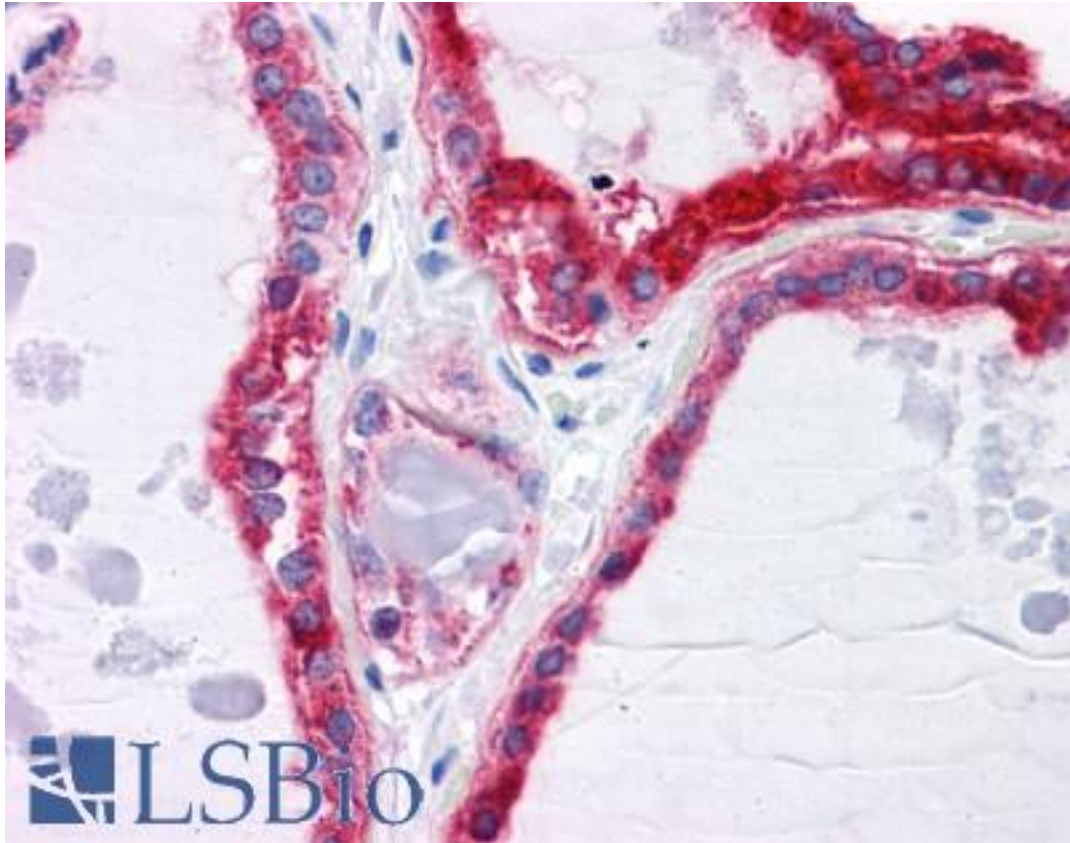


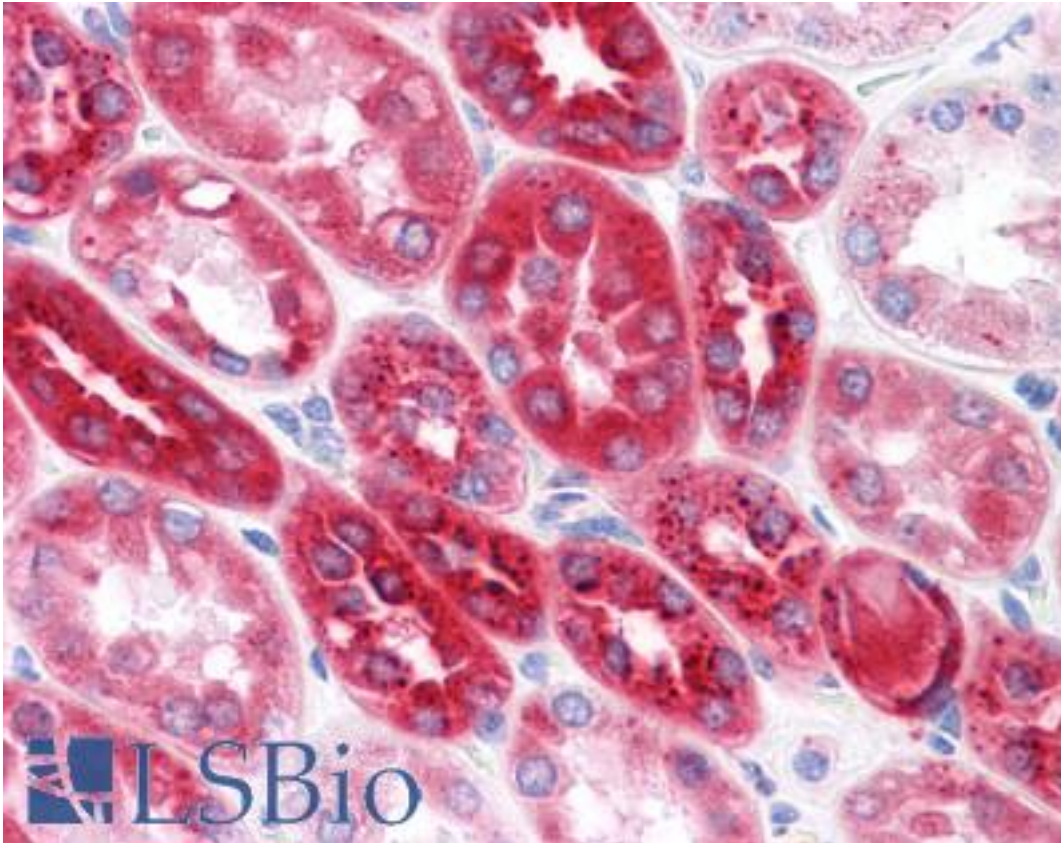
CPVL Mouse anti-Human Monoclonal (2G5-1C1) Antibody - LS-B4528 - LSBio	
CatalogID:	LS-B4528
Validation:	This antibody replaces catalog number LS-C105151. It has been validated for use in the following assays: IHC-P.
Target:	carboxypeptidase, vitellogenic-like (CPVL)
Synonyms:	CPVL Antibody, Carboxypeptidase WUG Antibody, CP-Mac carboxypeptidase Antibody, HVLP Antibody, VCP-like protein Antibody, VLP Antibody
Family / Subfamily:	Exopeptidase / Serine S10
Host	CPVL antibody was produced in Mouse
Clonality:	Monoclonal
Isotype:	IgG1,k
Clone Name:	2G5-1C1
Immunogen Species:	CPVL antibody was raised against Human
Antigen Type:	Recombinant protein
Immunogen:	CPVL antibody was raised against cPVL (AAH16838, 1 a.a. ~ 477 a.a) full length recombinant protein with GST tag. MW of the GST tag alone is 26 KDa.
Reactivity:	Human
Purification:	Protein A purified
Presentation:	PBS, pH 7.2
Recommended Storage:	Store at -20°C. Aliquot to avoid freeze/thaw cycles.
Usage Summary:	Western Blot (Cell lysate) - positive control Jurkat. Immunofluorescence (10 ug/ml) - positive control HeLa cells.
Uses:	IHC - Paraffin (5 µg/ml), Immunofluorescence (10 µg/ml), Western blot, ELISA (Optimal dilution to be determined by the researcher)
Size:	50 µg
Concentration:	0.5 mg/ml

Immunohistochemistry Image:



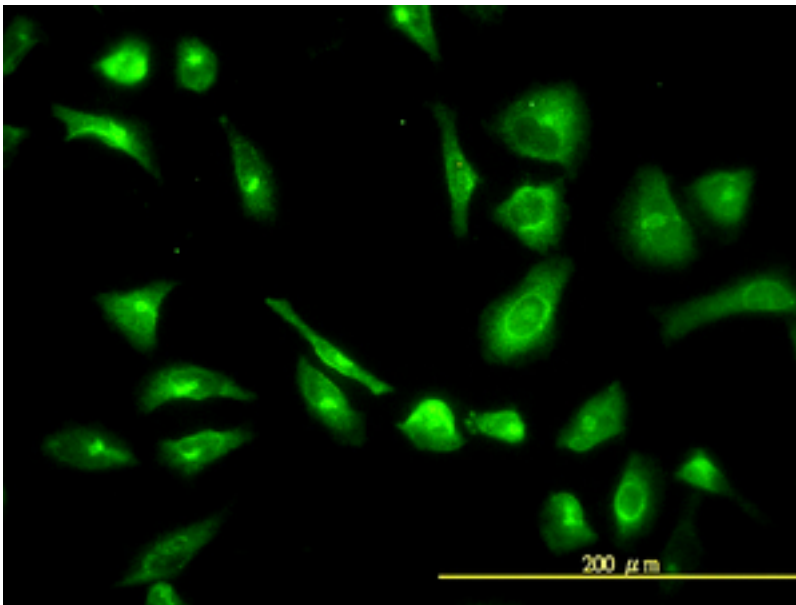
Anti-CPVL antibody IHC of human thyroid. Immunohistochemistry of formalin-fixed, paraffin-embedded tissue after heat-induced antigen retrieval. Antibody LS-B4528 concentration 5 ug/ml.

Immunohistochemistry Image:



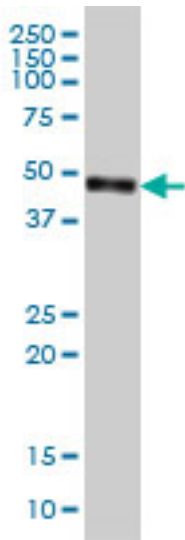
Anti-CPVL antibody IHC of human kidney. Immunohistochemistry of formalin-fixed, paraffin-embedded tissue after heat-induced antigen retrieval. Antibody LS-B4528 concentration 5 ug/ml.

Immunofluorescence Image:



Immunofluorescence of monoclonal antibody to CPVL on HeLa cell (antibody concentration 10 ug/ml).

Western Blot Image:



CPVL monoclonal antibody, clone 2G5-1C1 Western blot of CPVL expression in Jurkat.

Requested From:

Japan

Laboratory Reagent For In Vitro Research Use Only

Not for resale without prior written consent from LifeSpan BioSciences, Inc.

Created on 9/23/2014

© 2014 LifeSpan BioSciences