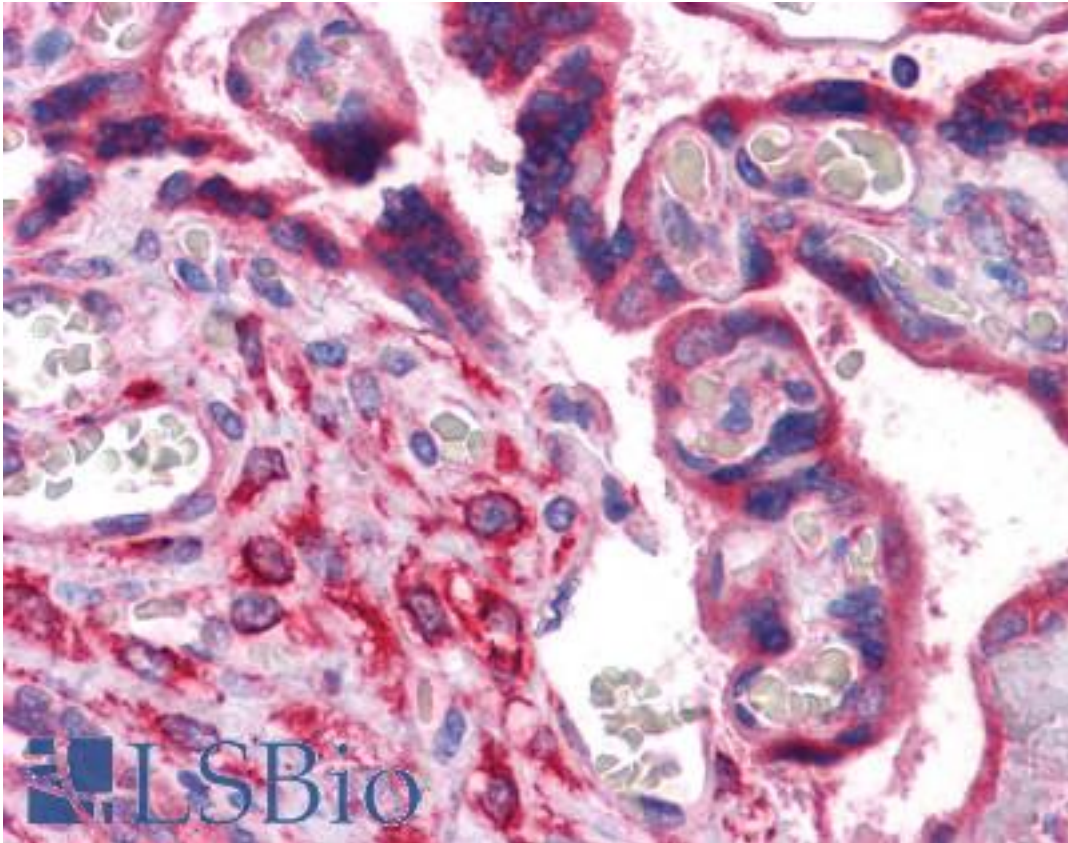


CRIM1 Mouse anti-Human Monoclonal (6E4) Antibody - LS-B4525 - LSBio

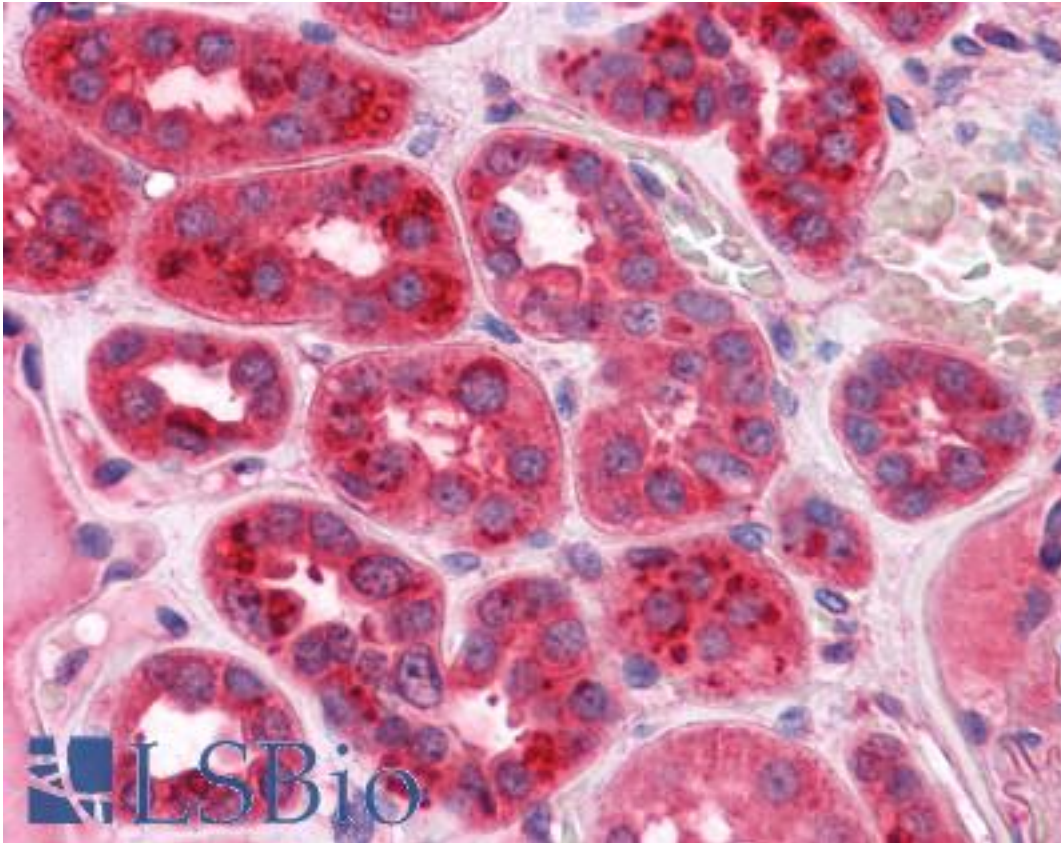
CatalogID:	LS-B4525
Validation:	This antibody replaces catalog number LS-C105141. It has been validated for use in the following assays: IHC-P.
Target:	cysteine rich transmembrane BMP regulator 1 (chordin-like) (CRIM1)
Synonyms:	CRIM1 Antibody, CRIM-1 Antibody, Cysteine-rich motor neuron 1 Antibody, S52 Antibody
Host	CRIM1 antibody was produced in Mouse
Clonality:	Monoclonal
Isotype:	IgG2a,k
Clone Name:	6E4
Immunogen Species:	CRIM1 antibody was raised against Human
Antigen Type:	Recombinant protein
Immunogen:	CRIM1 antibody was raised against cRIM1 (NP_057525, 36 a.a. ~ 146 a.a) partial recombinant protein with GST tag. MW of the GST tag alone is 26 KDa.
Reactivity:	Human
Purification:	Protein A purified
Presentation:	PBS, pH 7.2
Recommended Storage:	Store at -20°C or lower. Aliquot to avoid repeated freezing and thawing.
Usage Summary:	Tested in Western blot using the recombinant protein immunogen as the protein source. Sandwich ELISA (Recombinant protein).
Uses:	IHC - Paraffin (2.5 µg/ml), Western blot, ELISA (Optimal dilution to be determined by the researcher)
Size:	50 µg
Concentration:	0.5 mg/ml

Immunohistochemistry Image:



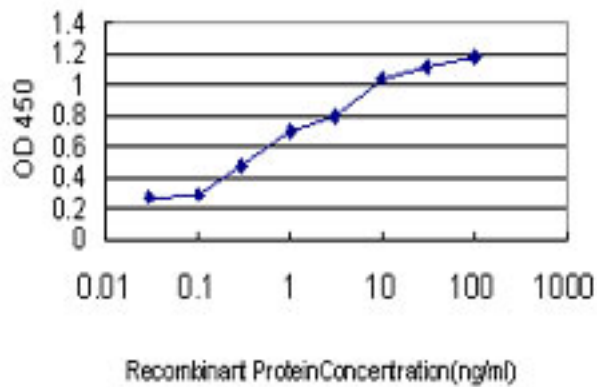
Anti-CRIM1 antibody IHC of human placenta. Immunohistochemistry of formalin-fixed, paraffin-embedded tissue after heat-induced antigen retrieval. Antibody LS-B4525 concentration 2.5 ug/ml.

Immunohistochemistry Image:



Anti-CRIM1 antibody IHC of human kidney. Immunohistochemistry of formalin-fixed, paraffin-embedded tissue after heat-induced antigen retrieval. Antibody LS-B4525 concentration 2.5 ug/ml.

ELISA Image:



Detection limit for recombinant GST tagged CRIM1 is approximately 0.03 ng/ml as a capture antibody.

Requested From:

Japan

Laboratory Reagent For In Vitro Research Use Only

Not for resale without prior written consent from LifeSpan BioSciences, Inc.

Created on 9/23/2014

© 2014 LifeSpan BioSciences