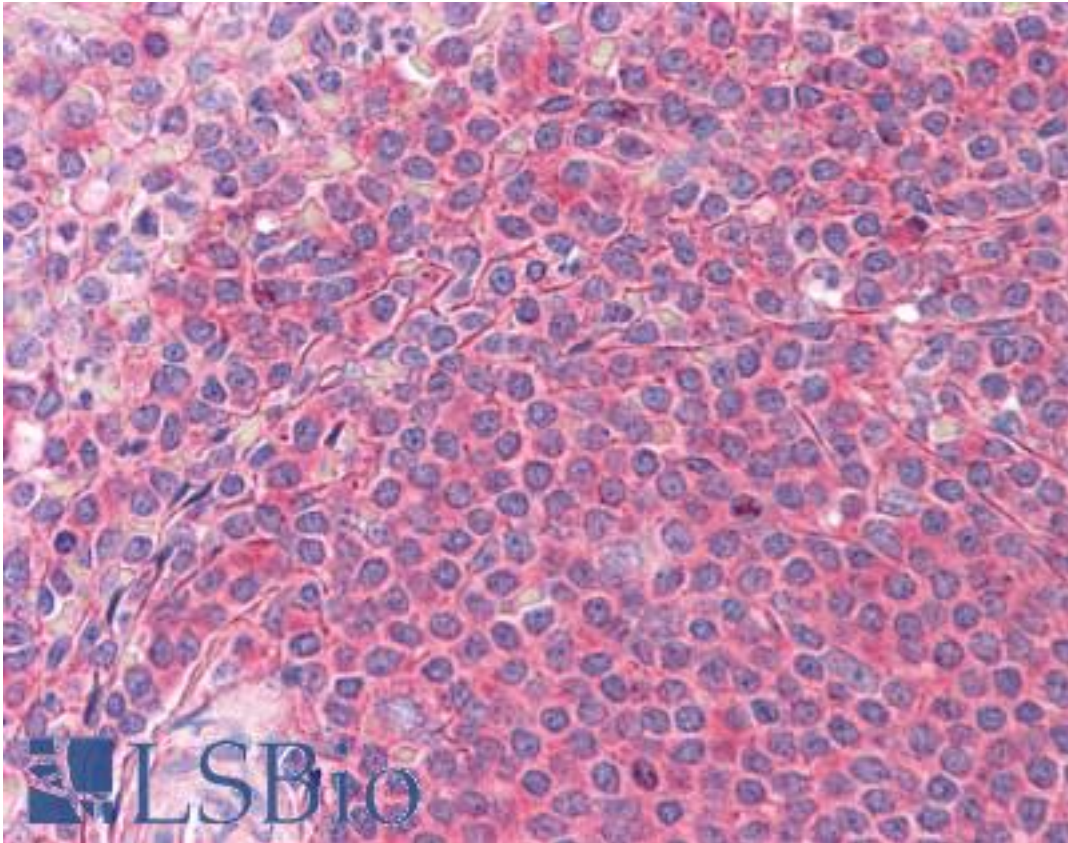


## SH3GLB1 / Bif / Endophilin B1 Mouse anti-Human Monoclonal (1B3-A5) Antibody - LS-B4524 - LSBio

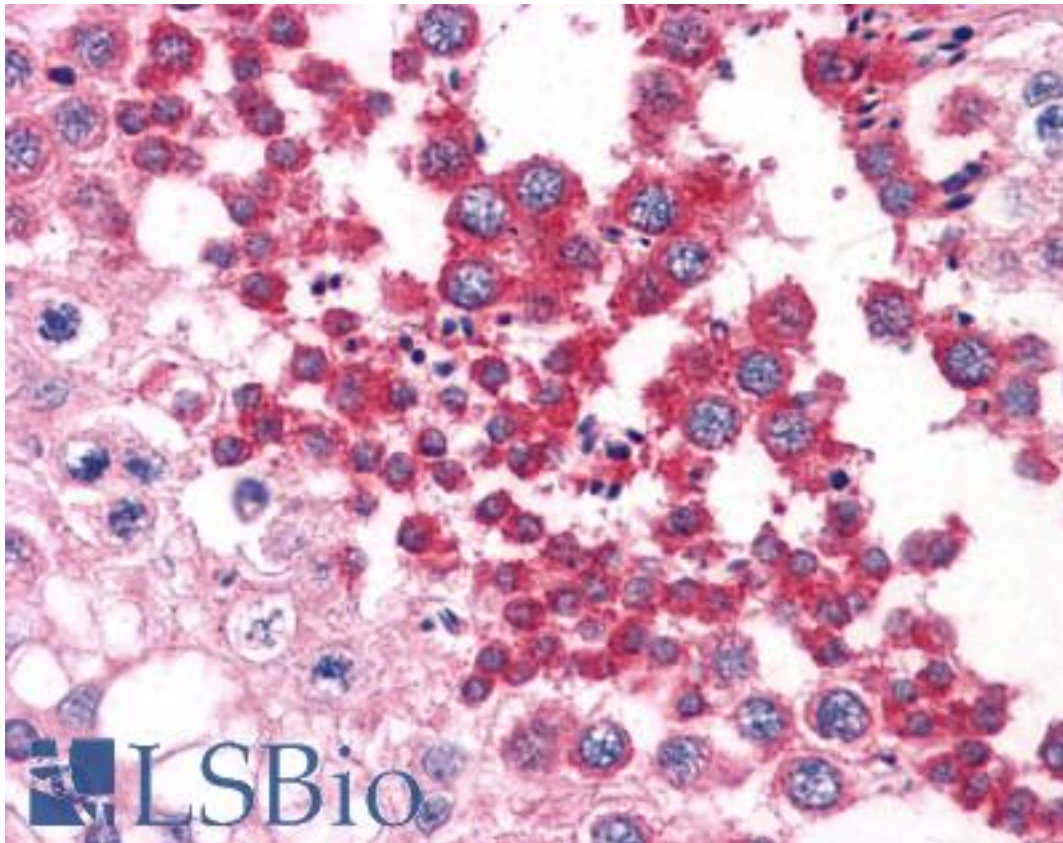
<b>CatalogID:</b>	LS-B4524
<b>Validation:</b>	This antibody replaces catalog number LS-C105140. It has been validated for use in the following assays: IHC-P.
<b>Target:</b>	SH3-domain GRB2-like endophilin B1 (SH3GLB1)
<b>Synonyms:</b>	SH3GLB1 Antibody, CGI-61 Antibody, Endophilin B1 Antibody, Endophilin-B1 Antibody, PPP1R70 Antibody, Bax-interacting factor 1 Antibody, Bif-1 Antibody, DJ612B15.2 Antibody, KIAA0491 Antibody, SH3-containing protein SH3GLB1 Antibody
<b>Family / Subfamily:</b>	Apoptosis
<b>Host</b>	SH3GLB1 antibody was produced in Mouse
<b>Clonality:</b>	Monoclonal
<b>Isotype:</b>	IgG1,k
<b>Clone Name:</b>	1B3-A5
<b>Immunogen Species:</b>	SH3GLB1 / Bif / Endophilin B1 antibody was raised against Human
<b>Antigen Type:</b>	Recombinant protein
<b>Immunogen:</b>	SH3GLB1 / Bif / Endophilin B1 antibody was raised against sH3GLB1 (AAH07455, 1 a.a. ~ 366 a.a) full length recombinant protein with GST tag. MW of the GST tag alone is 26 KDa.
<b>Reactivity:</b>	Human
<b>Purification:</b>	Protein A purified
<b>Presentation:</b>	PBS, pH 7.2. Sourced in Ascites.
<b>Recommended Storage:</b>	Store at -20°C. Aliquot to avoid freeze/thaw cycles.
<b>Usage Summary:</b>	Western Blot (Cell lysate) - positive control K-562. Western Blot (Transfected lysate) - positive control transfected 293T cell line. Sandwich ELISA (Recombinant protein).
<b>Uses:</b>	IHC - Paraffin (2.5 µg/ml), Western blot, ELISA (Optimal dilution to be determined by the researcher)
<b>Size:</b>	50 µg
<b>Concentration:</b>	0.39 mg/ml

**Immunohistochemistry Image:**



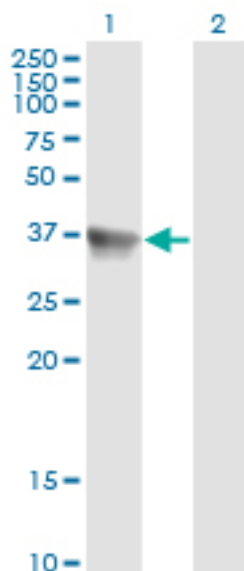
Anti-SH3GLB1 / Bif-1 antibody IHC of human spleen. Immunohistochemistry of formalin-fixed, paraffin-embedded tissue after heat-induced antigen retrieval. Antibody LS-B4524 concentration 2.5 ug/ml.

**Immunohistochemistry Image:**



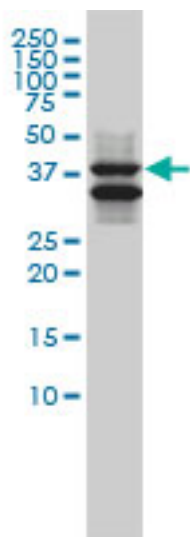
Anti-SH3GLB1 / Bif-1 antibody IHC of human testis. Immunohistochemistry of formalin-fixed, paraffin-embedded tissue after heat-induced antigen retrieval. Antibody LS-B4524 concentration 2.5 ug/ml.

**Western Blot Image:**



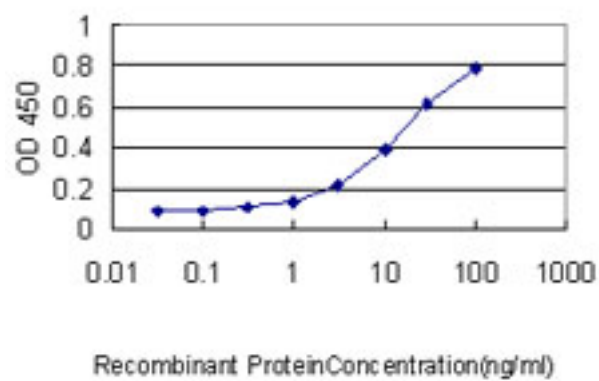
Western blot of SH3GLB1 expression in transfected 293T cell line by SH3GLB1 monoclonal antibody, clone 1B3-A5.

**Western Blot Image:**



SH3GLB1 monoclonal antibody, clone 1B3-A5 Western blot of SH3GLB1 expression in K-562.

**ELISA Image:**



Detection limit for recombinant GST tagged SH3GLB1 is approximately 0.3 ng/ml as a capture antibody.

**Requested From:**

Japan

Laboratory Reagent For In Vitro Research Use Only

Not for resale without prior written consent from LifeSpan BioSciences, Inc.

Created on 9/23/2014

© 2014 LifeSpan BioSciences