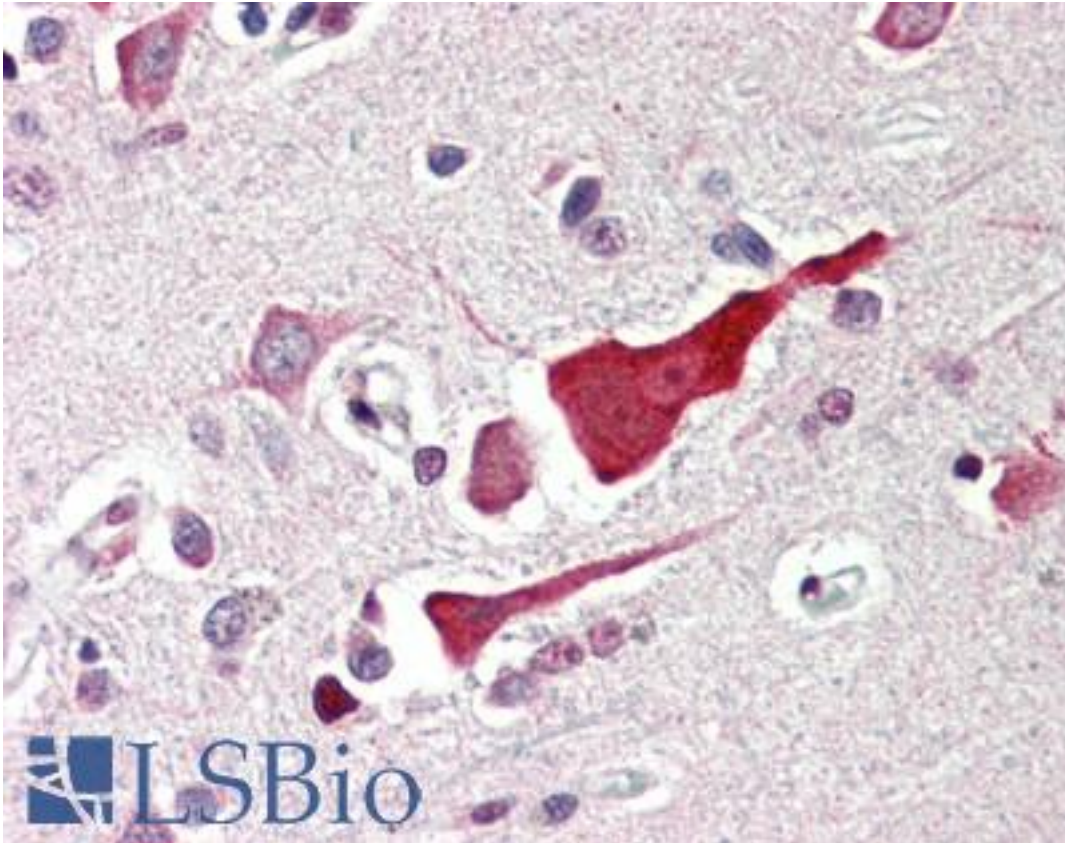


BCL2L10 / Diva Rabbit anti-Human Polyclonal (N-Terminus) Antibody - LS-B452 - LSBio

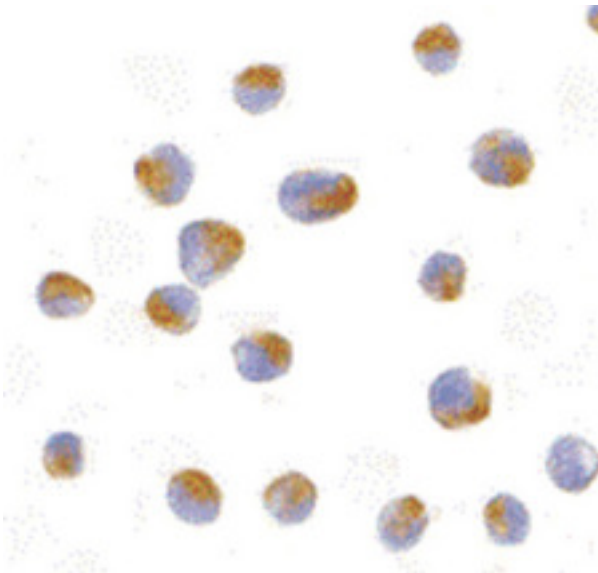
CatalogID:	LS-B452
Validation:	This antibody replaces catalog number LS-C19477. It has been validated for use in the following assays: IHC.
Target:	BCL2-like 10 (apoptosis facilitator) (BCL2L10)
Synonyms:	BCL2L10 Antibody, BCL-B Antibody, Apoptosis regulator Bcl-B Antibody, BCLB Antibody, Bcl2-L-10 Antibody, Diva not vaccine Antibody, Anti-apoptotic protein NrH Antibody, Bcl-2-like protein 10 Antibody, Boo Antibody, Boo not bladder Antibody, Diva Antibody
Family / Subfamily:	Apoptosis
Host	BCL2L10 antibody was produced in Rabbit
Clonality:	Polyclonal
Immunogen Species:	BCL2L10 / Diva antibody was raised against Human
Antigen Type:	Synthetic peptide
Immunogen:	BCL2L10 / Diva antibody was raised against synthetic peptide from human BCL2L10.
Specificity:	16 amino acid peptide from near the amino terminus of human Bcl-B
Epitope:	N-Terminus
Reactivity:	Human
Purification:	Immunoaffinity purified
Presentation:	PBS, 0.02% sodium azide.
Recommended Storage:	Short term 4°C, long term aliquot and store at -20°C, avoid freeze thaw cycles. Store undiluted.
Usage Summary:	Immunohistochemistry: LS-B452 was validated for use in immunohistochemistry on a panel of 21 formalin-fixed, paraffin-embedded (FFPE) human tissues after heat induced antigen retrieval in pH 6.0 citrate buffer. After incubation with the primary antibody, slides were incubated with biotinylated secondary antibody, followed by alkaline phosphatase-streptavidin and chromogen. The stained slides were evaluated by a pathologist to confirm staining specificity. The optimal working concentration for LS-B452 was determined to be 5 ug/ml.
Uses:	IHC - Paraffin (5 µg/ml), ICC, Western blot (1 - 2 µg/ml) (Optimal dilution to be determined by the researcher)
Size:	50 µg
Concentration:	1 mg/ml

Immunohistochemistry Image:



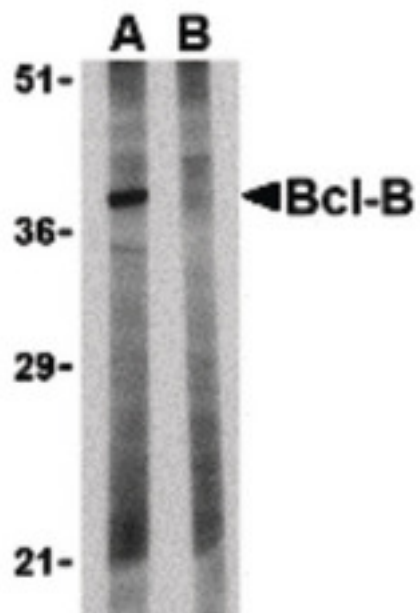
Anti-BCL2L10 / BCL-B antibody IHC of human brain, cortex. Immunohistochemistry of formalin-fixed, paraffin-embedded tissue after heat-induced antigen retrieval. Antibody LS-B452 concentration 5 ug/ml.

Immunocytochemistry Image:



Immunocytochemistry of Bcl-B in Jurkat cells with Bcl-B antibody at 10 ug/ml.

Western Blot Image:



Western blot of Bcl-B in Jurkat lysate with Bcl-B antibody at 1 ug/ml in the (A) absence and (B) presence of blocking peptide.

Requested From:

Japan

Laboratory Reagent For In Vitro Research Use Only

Not for resale without prior written consent from LifeSpan BioSciences, Inc.

Created on 9/23/2014

© 2014 LifeSpan BioSciences