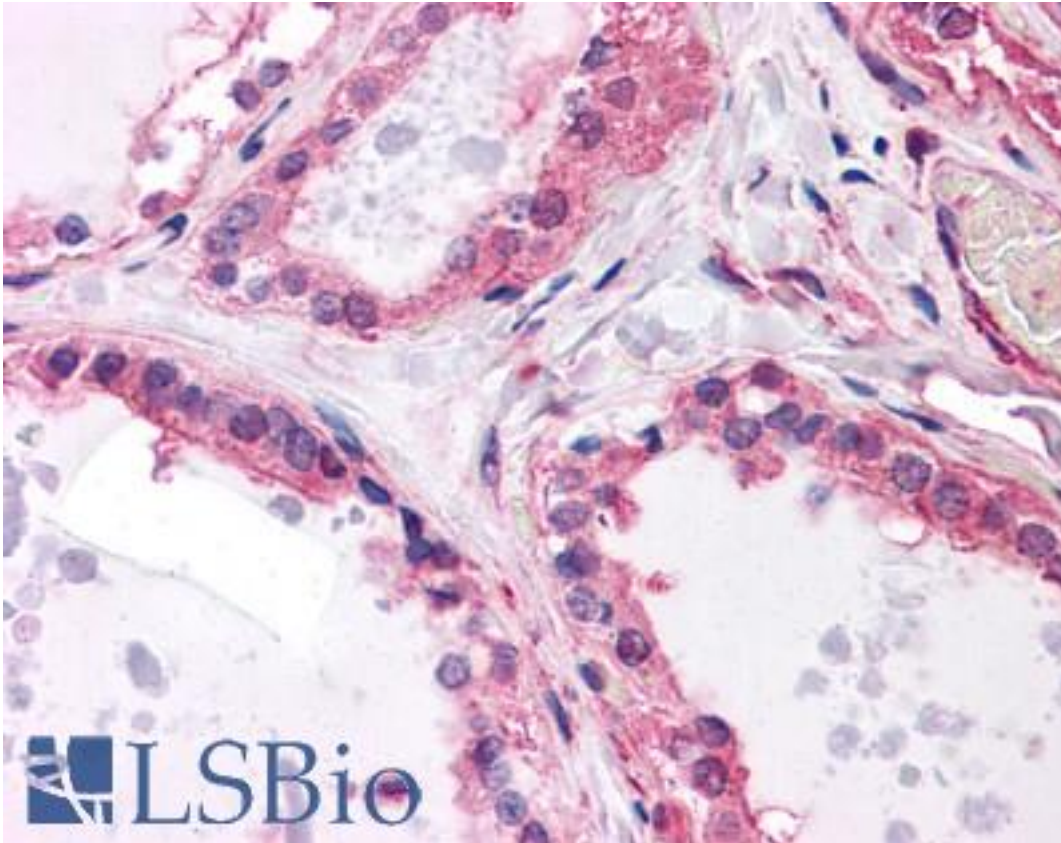


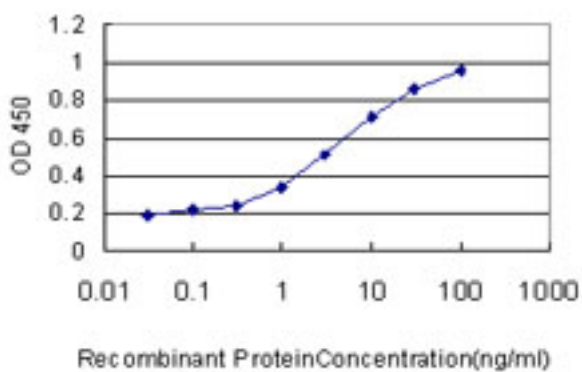
MCF2L / DBS Mouse anti-Human Monoclonal (1D11) Antibody - LS-B4519 - LSBio	
<b>CatalogID:</b>	LS-B4519
<b>Validation:</b>	This antibody replaces catalog number LS-C105119. It has been validated for use in the following assays: IHC-P.
<b>Target:</b>	MCF.2 Cell Line Derived Transforming Sequence-like (MCF2L)
<b>Synonyms:</b>	MCF2L Antibody, ARHGEF14 Antibody, DBS Antibody, KIAA0362 Antibody, OST Antibody, DBLs big sister Antibody
<b>Host</b>	MCF2L antibody was produced in Mouse
<b>Clonality:</b>	Monoclonal
<b>Isotype:</b>	IgG1,k
<b>Clone Name:</b>	1D11
<b>Immunogen Species:</b>	MCF2L / DBS antibody was raised against Human
<b>Antigen Type:</b>	Recombinant protein
<b>Immunogen:</b>	MCF2L / DBS antibody was raised against mCF2L (AAH20208, 220 a.a. ~ 320 a.a) partial recombinant protein with GST tag. MW of the GST tag alone is 26 KDa.
<b>Reactivity:</b>	Human
<b>Purification:</b>	Protein A purified
<b>Presentation:</b>	PBS, pH 7.2. Sourced in Ascites.
<b>Recommended Storage:</b>	Store at -20°C. Aliquot to avoid freeze/thaw cycles.
<b>Usage Summary:</b>	Tested in Western blot using the recombinant protein immunogen as the protein source. Sandwich ELISA (Recombinant protein).
<b>Uses:</b>	IHC - Paraffin (5 µg/ml), Western blot, ELISA (Optimal dilution to be determined by the researcher)
<b>Size:</b>	50 µg
<b>Concentration:</b>	1 mg/ml

**Immunohistochemistry Image:**



Anti-MCF2L antibody IHC of human thyroid. Immunohistochemistry of formalin-fixed, paraffin-embedded tissue after heat-induced antigen retrieval. Antibody LS-B4519 concentration 5 ug/ml.

**ELISA Image:**



Detection limit for recombinant GST tagged MCF2L is approximately 0.03 ng/ml as a capture antibody.

**Requested From:**

Japan

Laboratory Reagent For In Vitro Research Use Only

Not for resale without prior written consent from LifeSpan BioSciences, Inc.

Created on 9/23/2014

© 2014 LifeSpan BioSciences