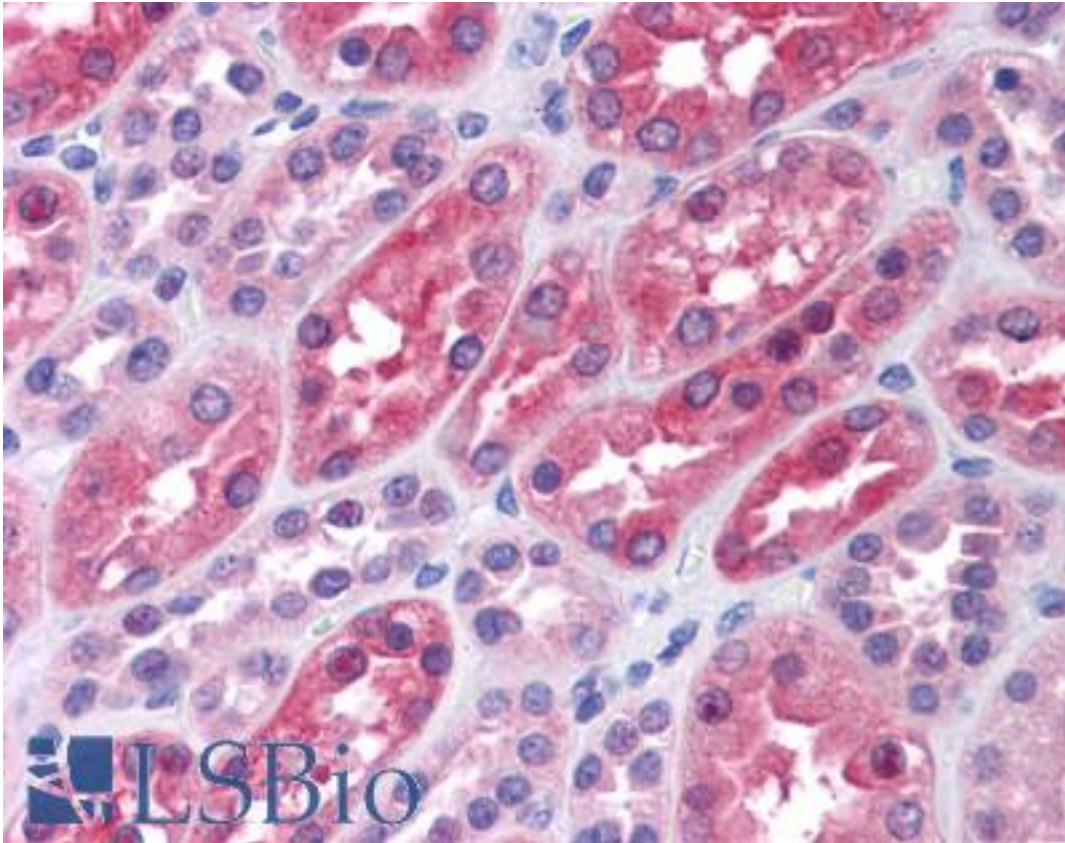


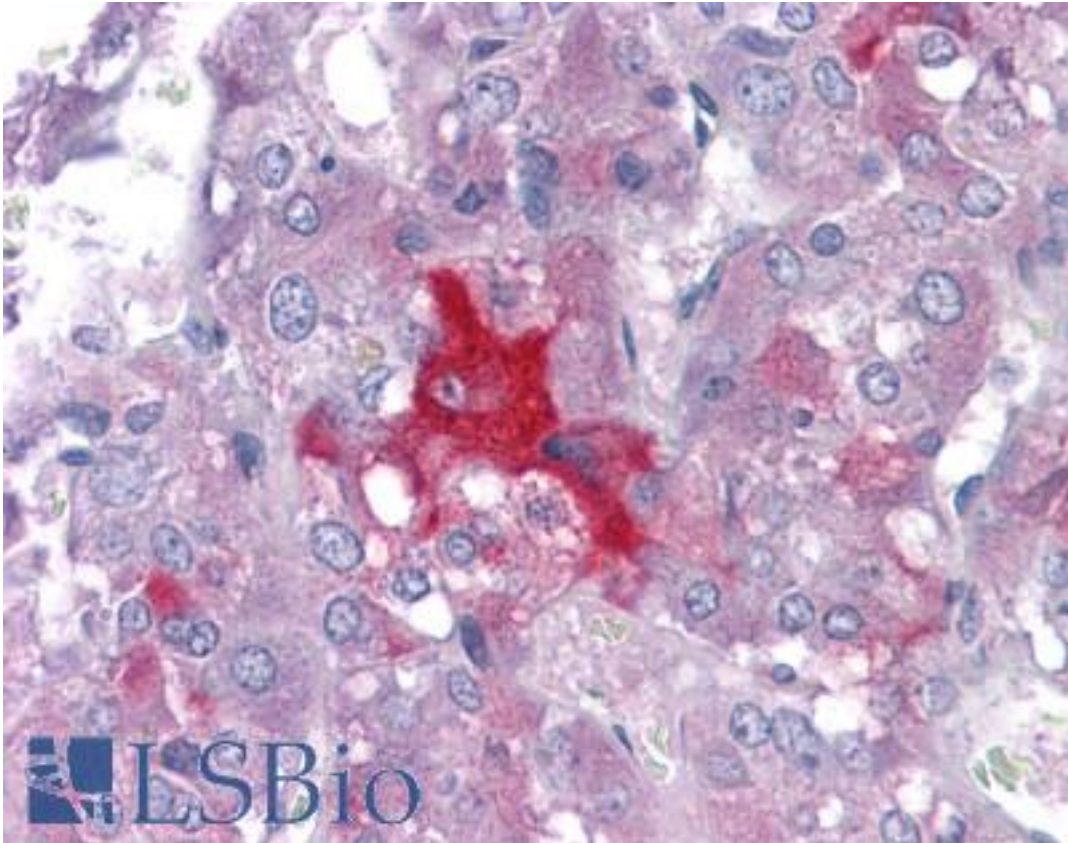
KPI-2 / LMTK2 Mouse anti-Human Monoclonal (3G1) Antibody - LS-B4518 - LSBio	
CatalogID:	LS-B4518
Validation:	This antibody replaces catalog number LS-C105115. It has been validated for use in the following assays: IHC-P.
Target:	lemur tyrosine kinase 2 (LMTK2)
Synonyms:	LMTK2 Antibody, AATYK2 Antibody, Brain-enriched kinase Antibody, Cprk Antibody, Kinase phosphatase inhibitor 2 Antibody, Kinase/phosphatase/inhibitor 2 Antibody, KPI2 Antibody, LMR2 Antibody, HBREK Antibody, BREK Antibody, CDK5/p35-regulated kinase Antibody, KIAA1079 Antibody, KPI-2 Antibody, Lemur tyrosine kinase 2 Antibody
Family / Subfamily:	Protein Kinase / LMR
Host	LMTK2 antibody was produced in Mouse
Clonality:	Monoclonal
Isotype:	IgG2b,k
Clone Name:	3G1
Immunogen Species:	KPI-2 / LMTK2 antibody was raised against Human
Antigen Type:	Recombinant protein
Immunogen:	KPI-2 / LMTK2 antibody was raised against IMTK2 (NP_055731, 1181 a.a. ~ 1280 a.a) partial recombinant protein with GST tag. MW of the GST tag alone is 26 KDa.
Reactivity:	Human
Purification:	Protein A purified
Presentation:	PBS, pH 7.2. Sourced in Ascites.
Recommended Storage:	Store at -20°C. Aliquot to avoid freeze/thaw cycles.
Usage Summary:	Tested in Western blot using the recombinant protein immunogen as the protein source. Sandwich ELISA (Recombinant protein).
Uses:	IHC - Paraffin (5 µg/ml), Western blot, ELISA (Optimal dilution to be determined by the researcher)
Size:	50 µg
Concentration:	0.3 mg/ml

Immunohistochemistry Image:



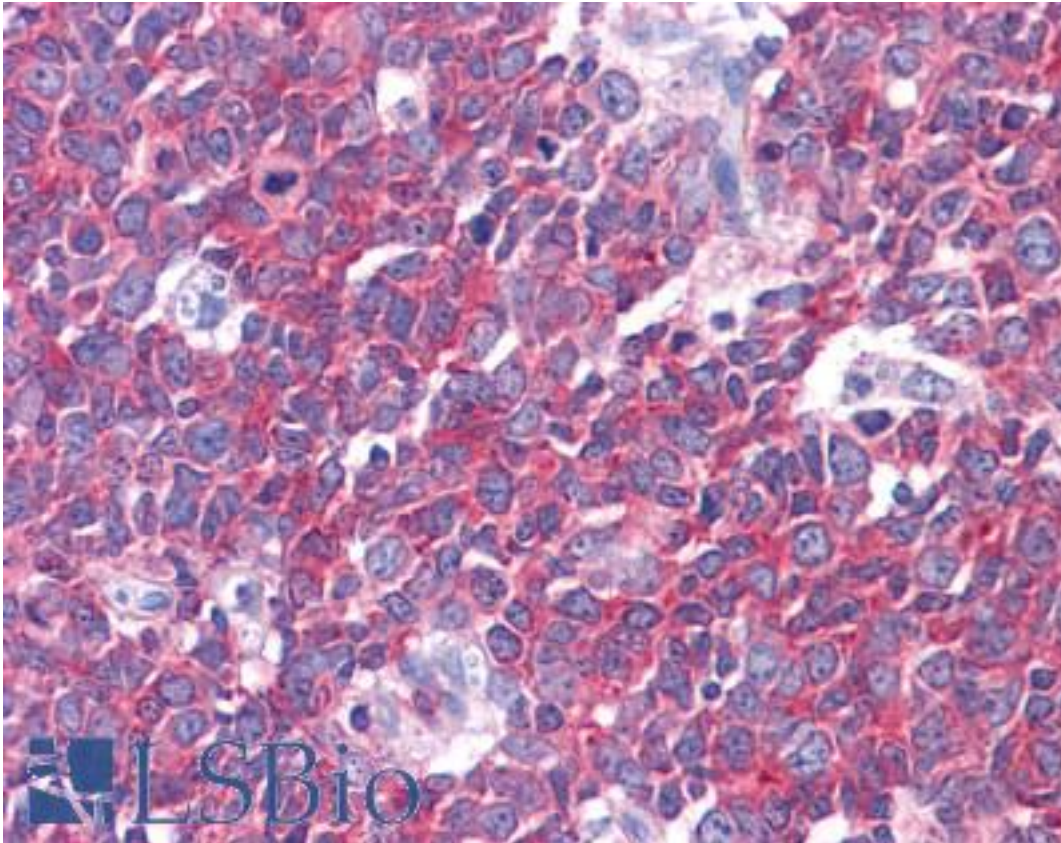
Anti-LMTK2 antibody IHC of human kidney. Immunohistochemistry of formalin-fixed, paraffin-embedded tissue after heat-induced antigen retrieval. Antibody LS-B4518 concentration 5 ug/ml.

Immunohistochemistry Image:



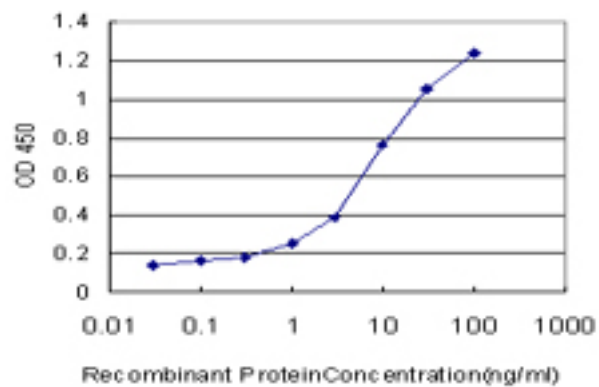
Anti-LMTK2 antibody IHC of human adrenal. Immunohistochemistry of formalin-fixed, paraffin-embedded tissue after heat-induced antigen retrieval. Antibody LS-B4518 concentration 5 ug/ml.

Immunohistochemistry Image:



Anti-LMTK2 antibody IHC of human tonsil. Immunohistochemistry of formalin-fixed, paraffin-embedded tissue after heat-induced antigen retrieval. Antibody LS-B4518 concentration 5 ug/ml.

ELISA Image:



Detection limit for recombinant GST tagged LMTK2 is approximately 0.1 ng/ml as a capture antibody.

Requested From:

Japan

Laboratory Reagent For In Vitro Research Use Only

Not for resale without prior written consent from LifeSpan BioSciences, Inc.

Created on 9/23/2014

© 2014 LifeSpan BioSciences