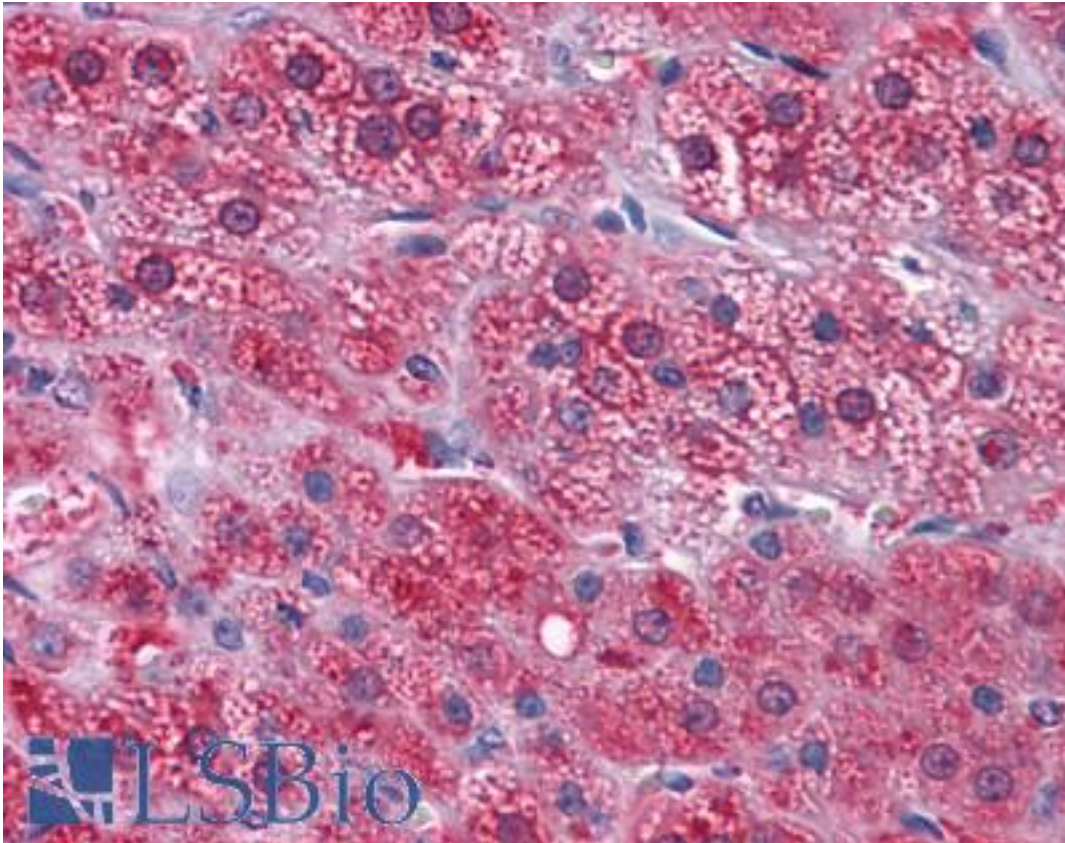


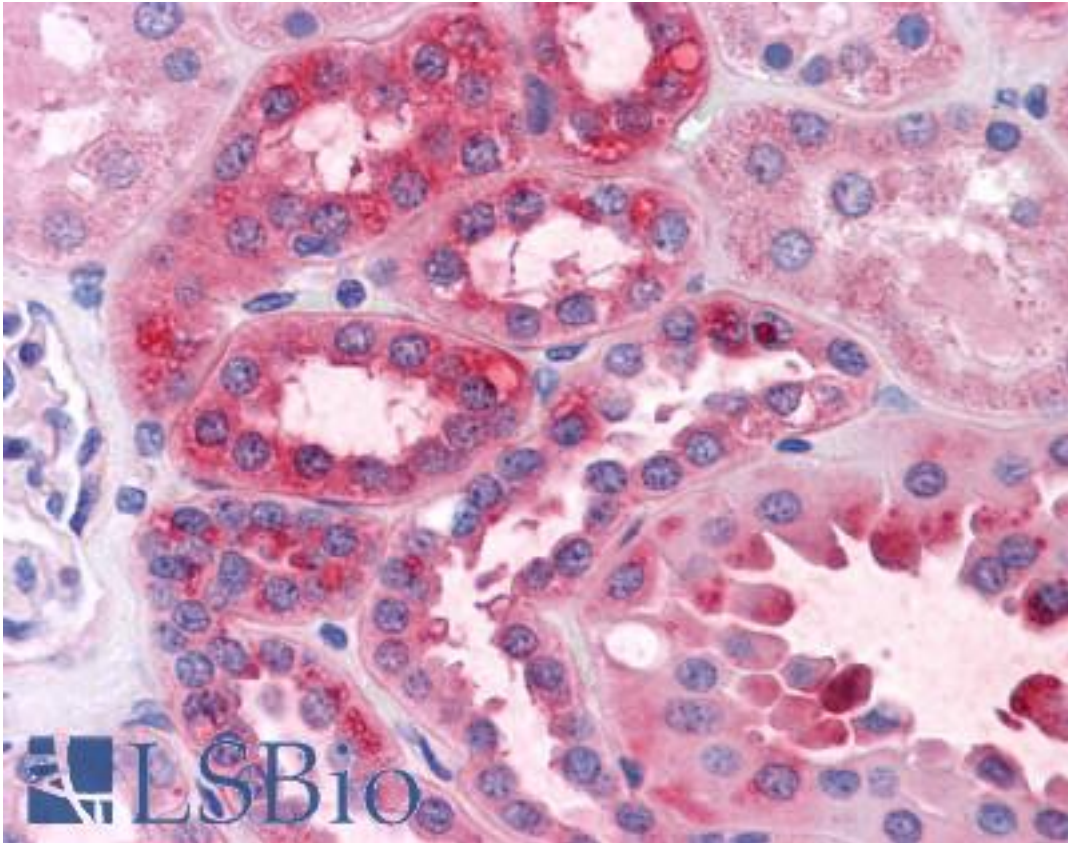
GPN1 / XAB1 Mouse anti-Human Monoclonal (3E1) Antibody - LS-B4516 - LSBio	
<b>CatalogID:</b>	LS-B4516
<b>Validation:</b>	This antibody replaces catalog number LS-C105113. It has been validated for use in the following assays: IHC-P.
<b>Target:</b>	GPN-loop GTPase 1 (GPN1)
<b>Synonyms:</b>	GPN1 Antibody, ATP(GTP)-binding protein Antibody, ATPBD1A Antibody, GPN-loop GTPase 1 Antibody, MBD2-interacting protein Antibody, RPAP4 Antibody, XPA binding protein 1, GTPase Antibody, MBDIN Antibody, NTPBP Antibody, XAB1 Antibody, XPA binding protein 1 Antibody, XPA-binding protein 1 Antibody
<b>Family / Subfamily:</b>	Ras GTPase superfamily IPR001806 / not assigned-Ras GTPase superfamily IPR001806
<b>Host</b>	GPN1 antibody was produced in Mouse
<b>Clonality:</b>	Monoclonal
<b>Isotype:</b>	IgG1,k
<b>Clone Name:</b>	3E1
<b>Immunogen Species:</b>	GPN1 / XAB1 antibody was raised against Human
<b>Antigen Type:</b>	Recombinant protein
<b>Immunogen:</b>	GPN1 / XAB1 antibody was raised against xAB1 (AAH07451, 9 a.a. ~ 119 a.a) partial recombinant protein with GST tag. MW of the GST tag alone is 26 KDa.
<b>Reactivity:</b>	Human
<b>Purification:</b>	Protein A purified
<b>Presentation:</b>	PBS, pH 7.2
<b>Recommended Storage:</b>	Store at -20°C. Aliquot to avoid freeze/thaw cycles.
<b>Usage Summary:</b>	Western Blot (Cell lysate) - positive control HL-60. Western Blot (Transfected lysate) - positive control transfected 293T cell line. Immunofluorescence (10 ug/ml) - positive control HeLa cells. Sandwich ELISA (Recombinant protein).
<b>Uses:</b>	IHC - Paraffin (5 µg/ml), Immunofluorescence (10 µg/ml), Western blot, ELISA (Optimal dilution to be determined by the researcher)
<b>Size:</b>	50 µg
<b>Concentration:</b>	1 mg/ml

**Immunohistochemistry Image:**



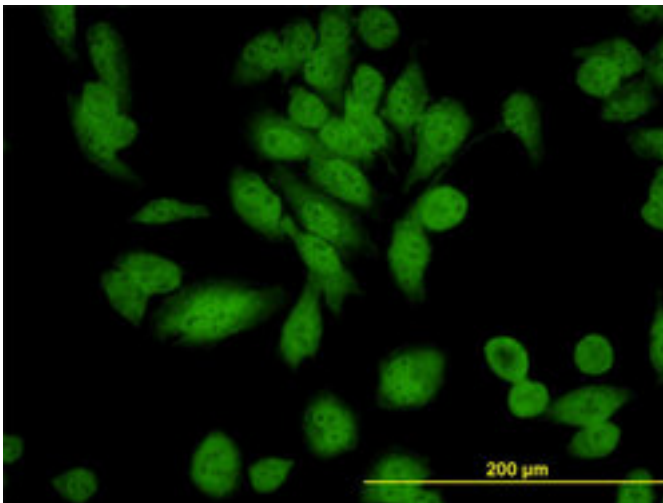
Anti-GPN1 / XAB1 antibody IHC of human adrenal. Immunohistochemistry of formalin-fixed, paraffin-embedded tissue after heat-induced antigen retrieval. Antibody LS-B4516 concentration 5 ug/ml.

**Immunohistochemistry Image:**



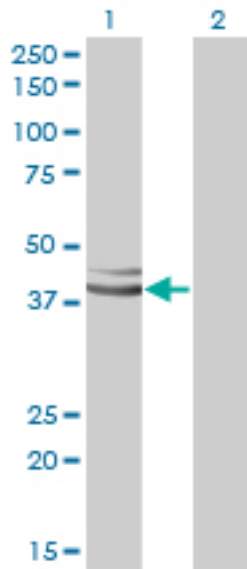
Anti-GPN1 / XAB1 antibody IHC of human kidney. Immunohistochemistry of formalin-fixed, paraffin-embedded tissue after heat-induced antigen retrieval. Antibody LS-B4516 concentration 5 ug/ml.

**Immunofluorescence Image:**



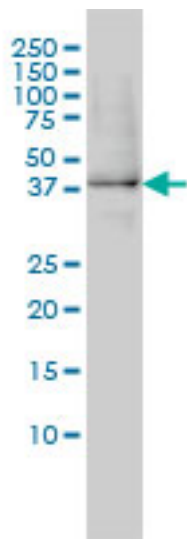
Immunofluorescence of monoclonal antibody to XAB1 on HeLa cell (antibody concentration 10 ug/ml).

**Western Blot Image:**



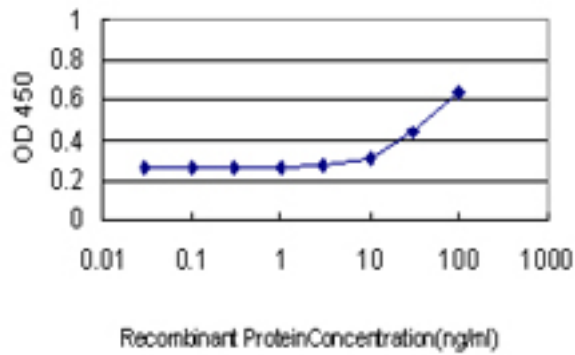
Western blot of XAB1 expression in transfected 293T cell line by XAB1 monoclonal antibody, clone 3E1.

**Western Blot Image:**



XAB1 monoclonal antibody clone 3E1 Western blot of XAB1 expression in HL-60.

**ELISA Image:**



Detection limit for recombinant GST tagged XAB1 is approximately 3 ng/ml as a capture antibody.

**Requested From:**

Japan

Laboratory Reagent For In Vitro Research Use Only

Not for resale without prior written consent from LifeSpan BioSciences, Inc.

Created on 9/23/2014

© 2014 LifeSpan BioSciences