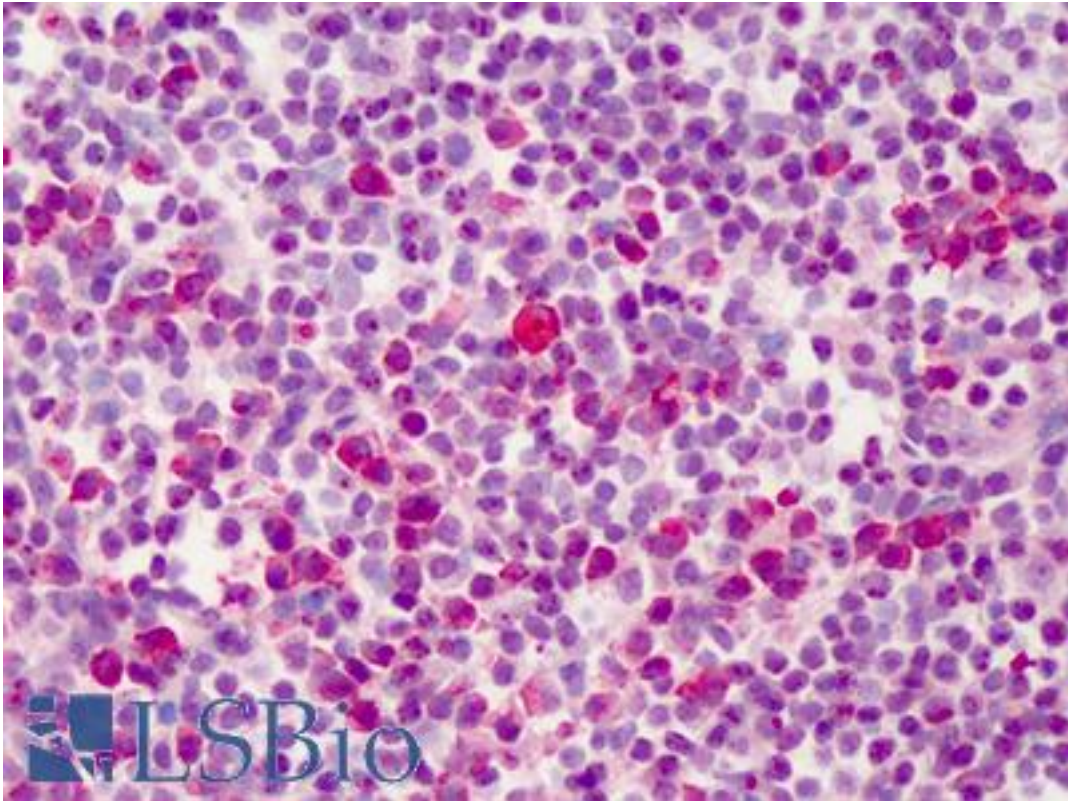


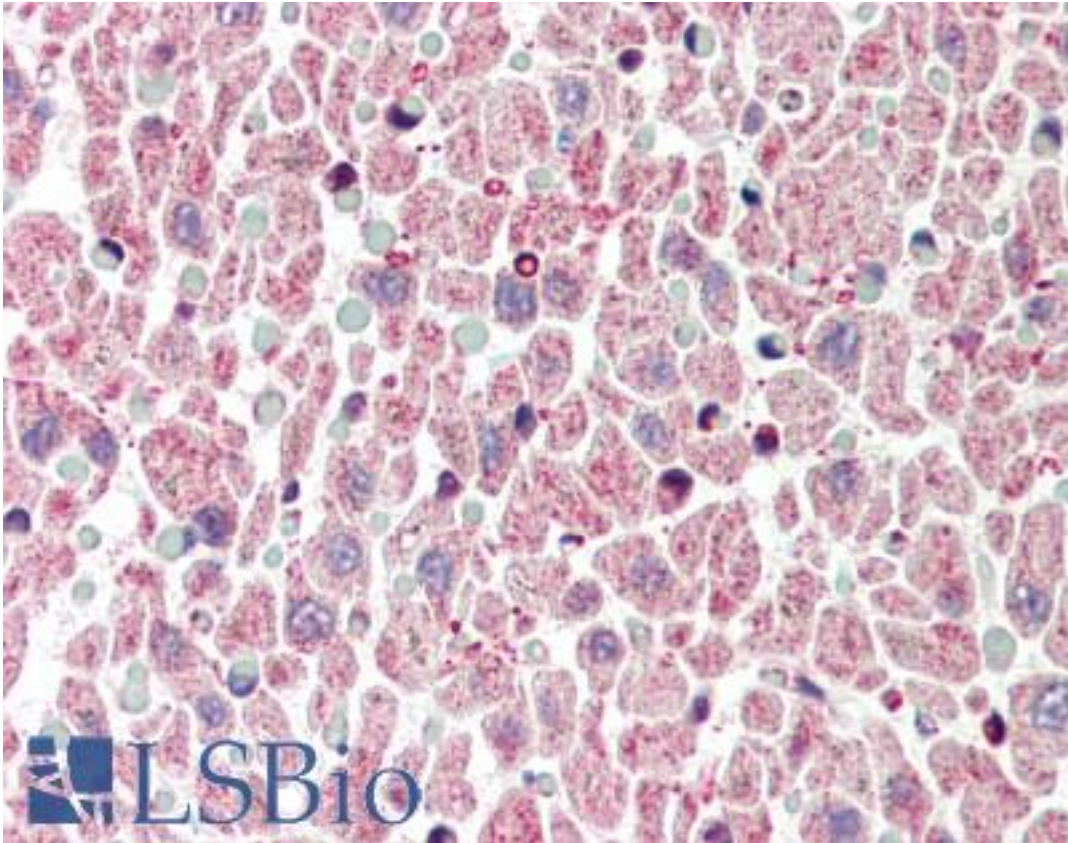
BCL2L1 / BCL-XL Rabbit anti-Human Polyclonal (C-Terminus) Antibody - LS-B451 - LSBio	
<b>CatalogID:</b>	LS-B451
<b>Validation:</b>	This antibody replaces catalog number LS-C440. It has been validated for use in the following assays: IHC.
<b>Target:</b>	BCL2-like 1 (BCL2L1)
<b>Synonyms:</b>	BCL2L1 Antibody, Apoptosis regulator Bcl-X Antibody, Bcl-xL Antibody, BCL-XL/S Antibody, BCLXS Antibody, Bcl-2-like protein 1 Antibody, BCL2-like 1 Antibody, BCL2L Antibody, Bcl-X Antibody, Bcl-xS Antibody, BCLXL Antibody, PPP1R52 Antibody, Bcl2-L-1 Antibody, BCLX Antibody
<b>Family / Subfamily:</b>	Apoptosis
<b>Host</b>	BCL2L1 antibody was produced in Rabbit
<b>Clonality:</b>	Polyclonal
<b>Immunogen Species:</b>	BCL2L1 / BCL-XL antibody was raised against Human
<b>Antigen Type:</b>	Synthetic peptide
<b>Immunogen:</b>	BCL2L1 / BCL-XL antibody was raised against synthetic peptide from human BCL2L1 / Bcl-xL.
<b>Specificity:</b>	peptide corresponding to 14 amino acids near the carboxy-terminus of human Bcl-xL
<b>Epitope:</b>	C-Terminus
<b>Reactivity:</b>	Human
<b>Purification:</b>	Ion exchange chromatography
<b>Presentation:</b>	PBS, 0.02% sodium azide.
<b>Recommended Storage:</b>	Short term 4°C, long term aliquot and store at -20°C, avoid freeze thaw cycles. Store undiluted.
<b>Usage Summary:</b>	Immunohistochemistry: LS-B451 was validated for use in immunohistochemistry on a panel of 21 formalin-fixed, paraffin-embedded (FFPE) human tissues after heat induced antigen retrieval in pH 6.0 citrate buffer. After incubation with the primary antibody, slides were incubated with biotinylated secondary antibody, followed by alkaline phosphatase-streptavidin and chromogen. The stained slides were evaluated by a pathologist to confirm staining specificity. The optimal working concentration for LS-B451 was determined to be 2.5 ug/ml.
<b>Uses:</b>	IHC - Paraffin (2.5 µg/ml), Western blot (Optimal dilution to be determined by the researcher)
<b>Size:</b>	50 µg
<b>Concentration:</b>	1 mg/ml

**Immunohistochemistry Image:**



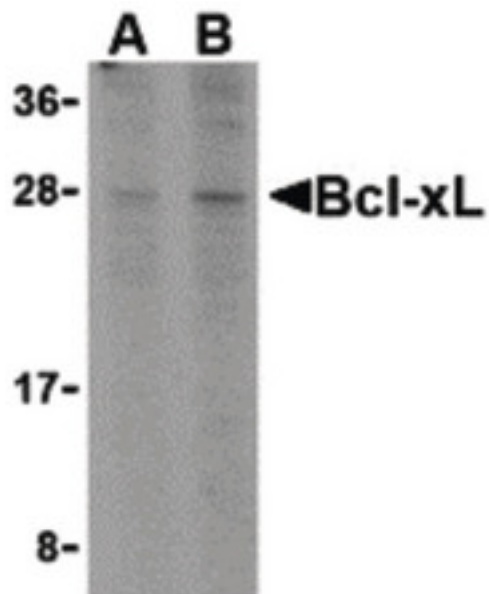
Anti-BCL2L1 / Bcl-x antibody IHC of human tonsil. Immunohistochemistry of formalin-fixed, paraffin-embedded tissue after heat-induced antigen retrieval. Antibody LS-B451 concentration 2.5 ug/ml.

**Immunohistochemistry Image:**



Anti-BCL2L1 / Bcl-x antibody IHC of human heart. Immunohistochemistry of formalin-fixed, paraffin-embedded tissue after heat-induced antigen retrieval. Antibody LS-B451 concentration 5 ug/ml.

**Western Blot Image:**



Western blot of Bcl-xL in A549 cell lysates with Bcl-xL antibody at (A) 1 and (B) 2 ug/ml.

Requested From:

Japan

Laboratory Reagent For In Vitro Research Use Only

Not for resale without prior written consent from LifeSpan BioSciences, Inc.

Created on 9/23/2014

© 2014 LifeSpan BioSciences