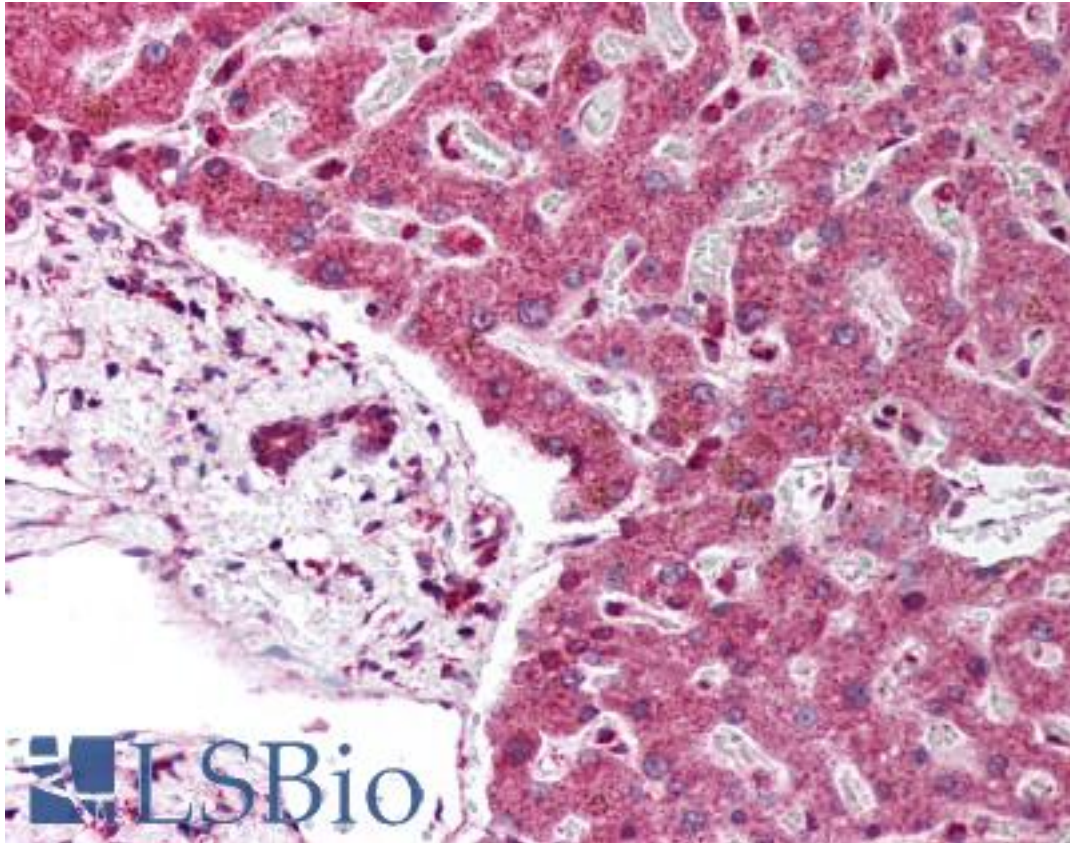


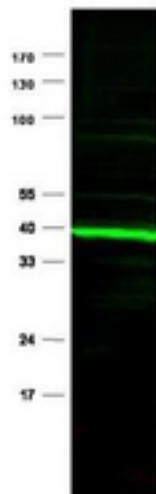
PPARD / PPAR Delta Rabbit anti-Mouse Polyclonal (Internal) Antibody - LS-B45 - LSBio	
CatalogID:	LS-B45
Validation:	This antibody replaces catalog number LS-C18857. It has been validated for use in the following assays: IHC.
Target:	peroxisome proliferator-activated receptor delta (PPARD)
Synonyms:	PPARD Antibody, FAAR Antibody, NUCI Antibody, PPAR-beta Antibody, PPAR-delta Antibody, NR1C2 Antibody, NUC1 Antibody, NUCII Antibody, Nuclear hormone receptor 1 Antibody, PPARB Antibody, PPAR Delta Antibody
Family / Subfamily:	NHR / NR1 Thyroid hormone-like
Host	PPARD antibody was produced in Rabbit
Clonality:	Polyclonal
Immunogen Species:	PPARD / PPAR Delta antibody was raised against Mouse
Antigen Type:	Synthetic peptide
Immunogen:	PPARD / PPAR Delta antibody was raised against synthetic peptide from mouse PPARD.
Specificity:	Amino acids 1 -14 of mouse PPAR delta.
Epitope:	Internal
Reactivity:	Mouse, Human, Rat
Purification:	Immunoaffinity purified
Presentation:	0.02 M potassium phosphate, 0.15 M sodium chloride, pH 7.2, 0.01% sodium azide.
Recommended Storage:	+4°C or -20°C, Avoid repeated freezing and thawing.
Usage Summary:	Immunohistochemistry: LS-B45 was validated for use in immunohistochemistry on a panel of 21 formalin-fixed, paraffin-embedded (FFPE) human tissues after heat induced antigen retrieval in pH 6.0 citrate buffer. After incubation with the primary antibody, slides were incubated with biotinylated secondary antibody, followed by alkaline phosphatase-streptavidin and chromogen. The stained slides were evaluated by a pathologist to confirm staining specificity. The optimal working concentration for LS-B45 was determined to be 2.5 ug/ml.
Uses:	IHC - Paraffin (2.5 µg/ml), Western blot (1:500 - 1:2000), ELISA (1:2000 - 1:8000) (Optimal dilution to be determined by the researcher)
Size:	50 µg
Concentration:	1 mg/ml

Immunohistochemistry Image:



Anti-PPAR Delta antibody IHC of human liver. Immunohistochemistry of formalin-fixed, paraffin-embedded tissue after heat-induced antigen retrieval. Antibody LS-B45 concentration 5 ug/ml.

Western Blot Image:



Anti-PPAR Delta Antibody - Western Blot. Affinity Purified Anti-PPAR delta [Rabbit] is shown to detect a predominant band at ~43 kD corresponding to PPAR delta present in mouse heart whole cell lysates. Preincubation of the antibody with the immunizing peptide completely blocks reactivity with this band (data not shown). Approximately 30 ug of lysate was loaded per lane for SDS-PAGE. Detection occurred using a 1:750 dilution of primary antibody diluted in 5% BLOTTO in PBS overnight at 4C followed reaction with a 1:10000 dilution of IRDye 800 conjugated Gt-a-Rabbit IgG (H&L) (for 45 min at room temperature (800 nm channel, green). IRDye 800 fluorescence image was captured using the Odyssey Infrared Imaging System developed by LI-COR. IRDye is a trademark of LI-COR, Inc. Other detection systems will yield similar results.

Requested From:

Japan

Laboratory Reagent For In Vitro Research Use Only

Not for resale without prior written consent from LifeSpan BioSciences, Inc.

Created on 9/23/2014

© 2014 LifeSpan BioSciences