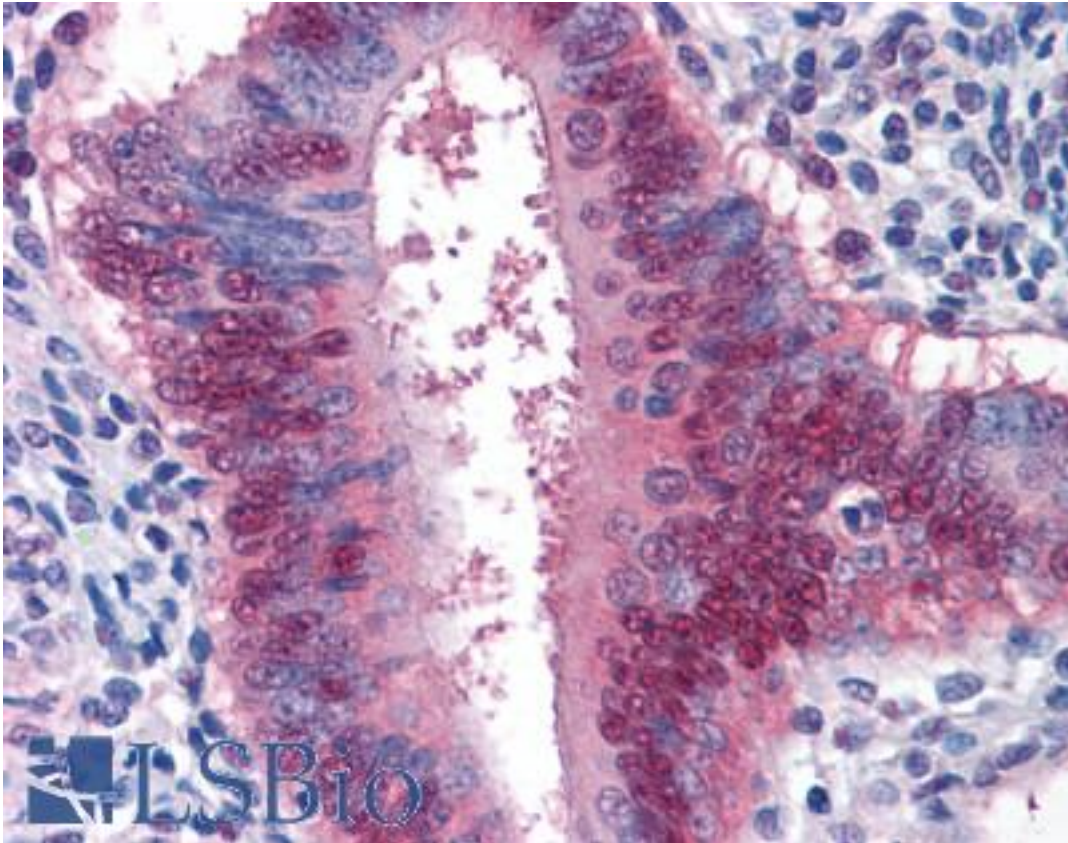


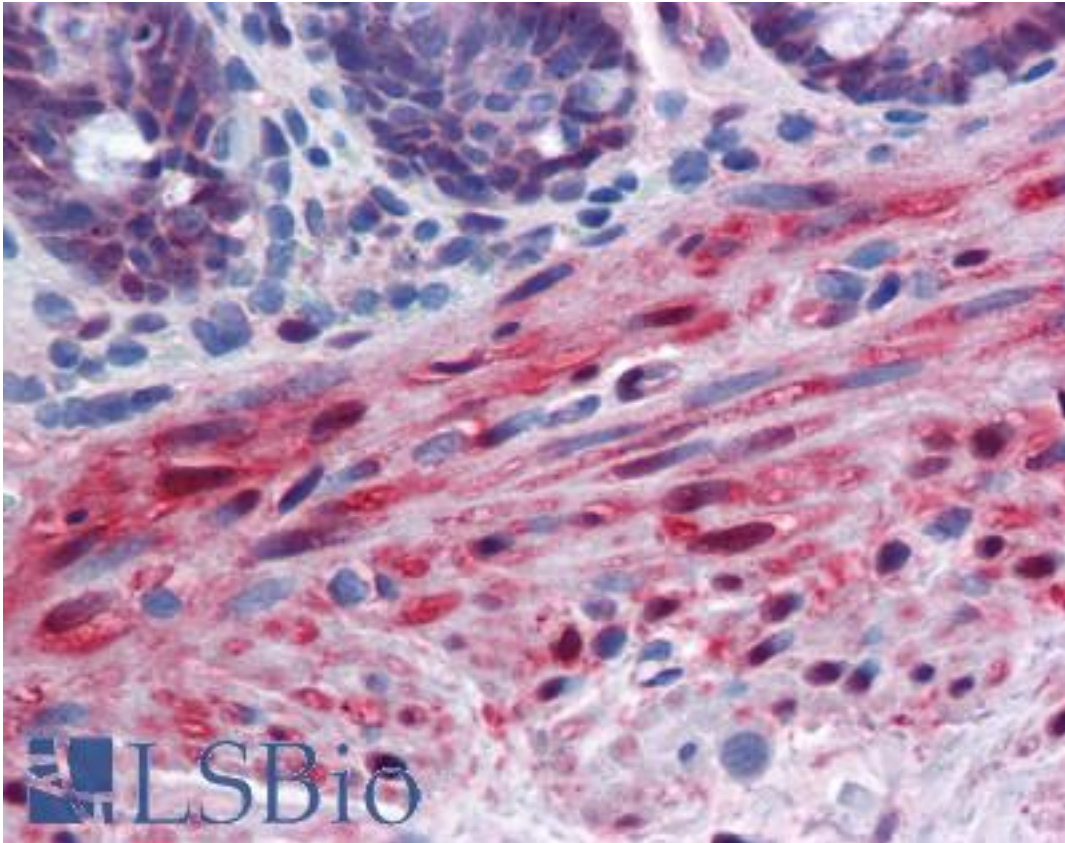
YAP / YAP1 Mouse anti-Human Monoclonal (2F12) Antibody - LS-B4494 - LSBio	
<b>CatalogID:</b>	LS-B4494
<b>Validation:</b>	This antibody replaces catalog number LS-C105100. It has been validated for use in the following assays: IHC-P.
<b>Target:</b>	Yes-associated protein 1 (YAP1)
<b>Synonyms:</b>	YAP1 Antibody, 65 kDa Yes-associated protein Antibody, YAP Antibody, Yes-associated protein beta Antibody, Yes-associated protein delta Antibody, Yorkie homolog Antibody, YAP2 Antibody, Yes-associated protein 1 Antibody, Yes-associated protein 2 Antibody, YKI Antibody, YAP65 Antibody
<b>Host</b>	YAP1 antibody was produced in Mouse
<b>Clonality:</b>	Monoclonal
<b>Isotype:</b>	IgG2a,k
<b>Clone Name:</b>	2F12
<b>Immunogen Species:</b>	YAP / YAP1 antibody was raised against Human
<b>Antigen Type:</b>	Recombinant protein
<b>Immunogen:</b>	YAP / YAP1 antibody was raised against yAP1 (NP_006097, 53 a.a. ~ 162 a.a) partial recombinant protein with GST tag. MW of the GST tag alone is 26 KDa.
<b>Reactivity:</b>	Human
<b>Purification:</b>	Protein A purified
<b>Presentation:</b>	PBS, pH 7.4.
<b>Recommended Storage:</b>	Store at -20°C. Aliquot to avoid freeze/thaw cycles.
<b>Usage Summary:</b>	Western Blot (Cell lysate) - positive control Hela NE. Western Blot (Transfected lysate) - positive control transfected 293T cell line. Immunofluorescence (30 ug/ml) - positive control HeLa cells. Sandwich ELISA (Recombinant protein).
<b>Uses:</b>	IHC - Paraffin (5 µg/ml), Immunofluorescence (10 µg/ml), Western blot (1 - 5 µg/ml), ELISA (Optimal dilution to be determined by the researcher)
<b>Size:</b>	50 µg
<b>Concentration:</b>	1 mg/ml

**Immunohistochemistry Image:**



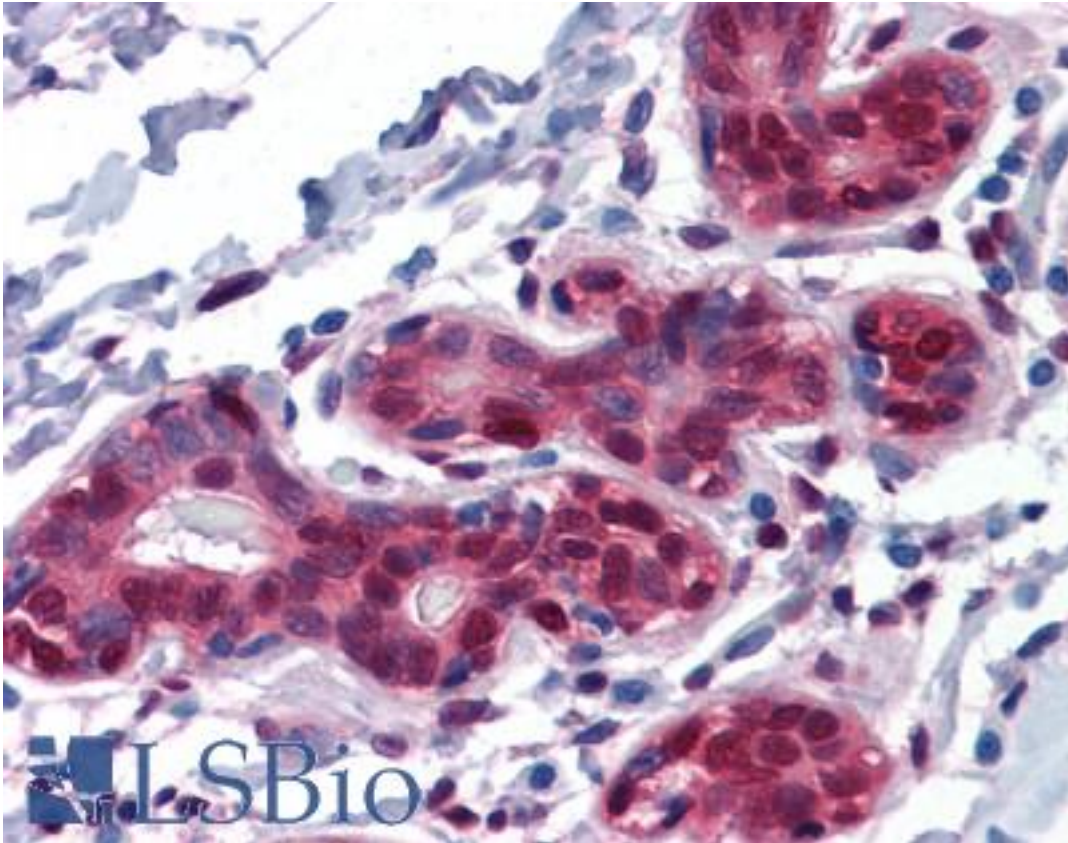
Anti-YAP1 antibody IHC of human uterus. Immunohistochemistry of formalin-fixed, paraffin-embedded tissue after heat-induced antigen retrieval. Antibody LS-B4494 concentration 5 ug/ml.

**Immunohistochemistry Image:**



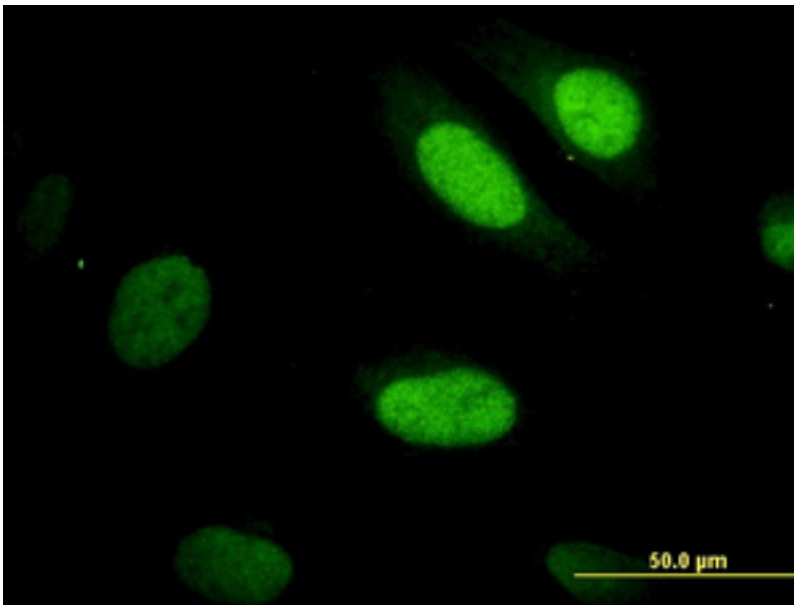
Anti-YAP1 antibody IHC of human colon, muscularis mucosa. Immunohistochemistry of formalin-fixed, paraffin-embedded tissue after heat-induced antigen retrieval. Antibody LS-B4494 concentration 5 ug/ml.

**Immunohistochemistry Image:**



Anti-YAP1 antibody IHC of human breast. Immunohistochemistry of formalin-fixed, paraffin-embedded tissue after heat-induced antigen retrieval. Antibody LS-B4494 concentration 5 ug/ml.

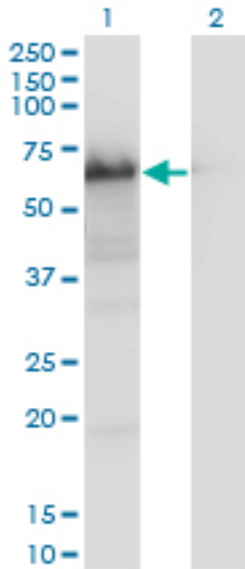
**Immunofluorescence Image:**



Immunofluorescence of monoclonal antibody to YAP1 on HeLa cell (antibody concentration 30 ug/ml).

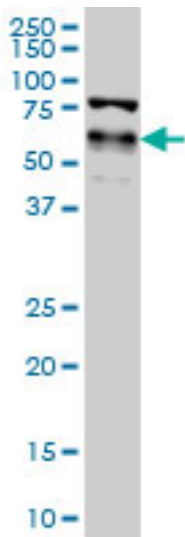


**Western Blot Image:**



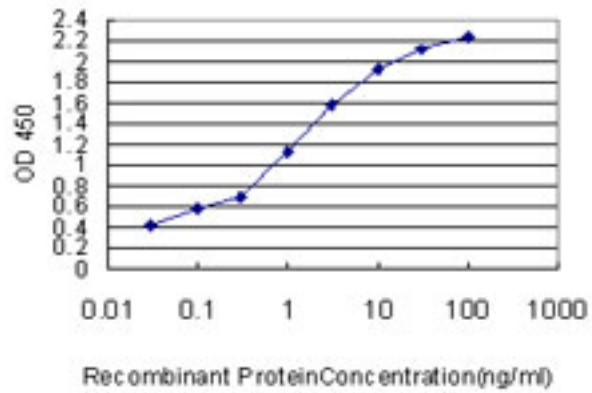
Western blot of YAP1 expression in transfected 293T cell line by YAP1 monoclonal antibody clone 2F12.

**Western Blot Image:**



YAP1 monoclonal antibody clone 2F12 Western blot of YAP1 expression in HeLa NE.

**ELISA Image:**



Detection limit for recombinant GST tagged YAP1 is approximately 0.03 ng/ml as a capture antibody.

**Requested From:**

Japan

Laboratory Reagent For In Vitro Research Use Only

Not for resale without prior written consent from LifeSpan BioSciences, Inc.

Created on 9/23/2014

© 2014 LifeSpan BioSciences