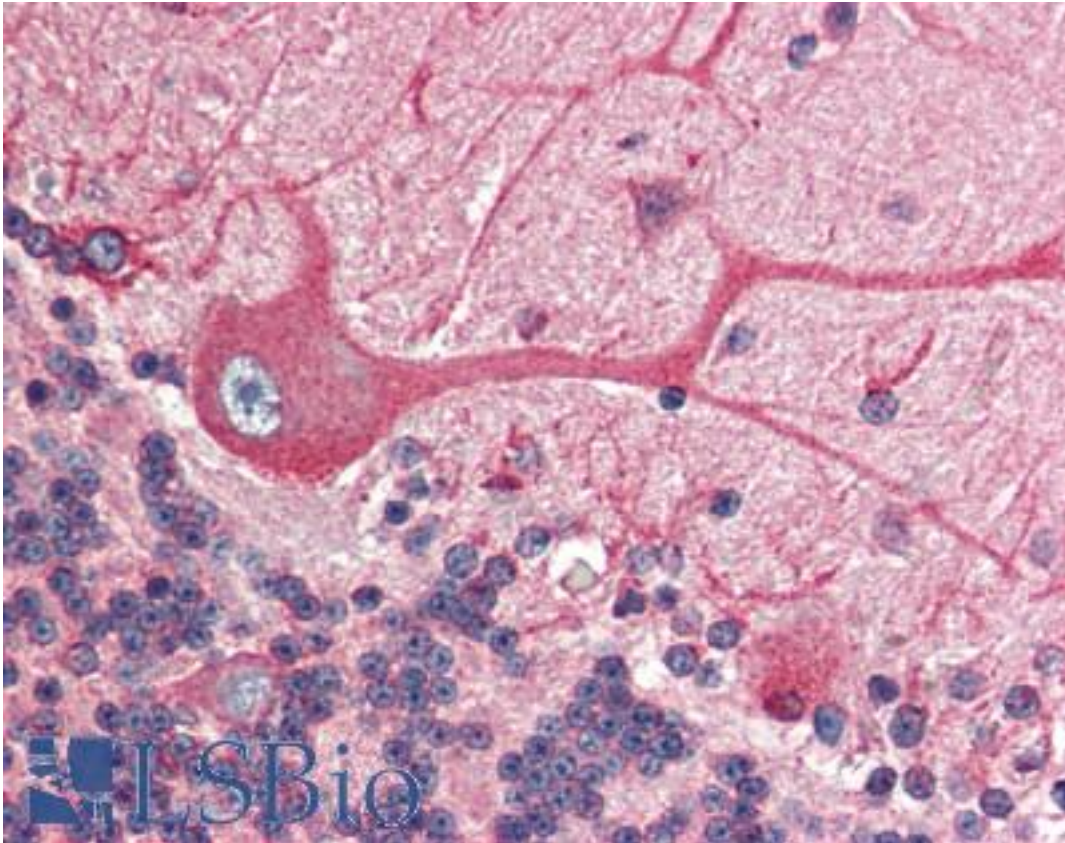


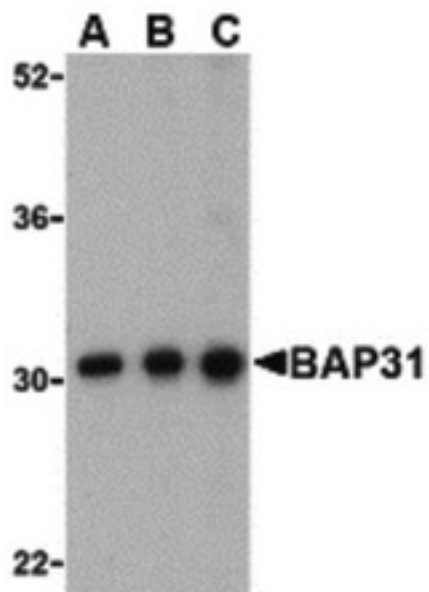
BCAP31 / BAP31 Rabbit anti-Human Polyclonal (C-Terminus) Antibody - LS-B449 - LSBio	
CatalogID:	LS-B449
Validation:	This antibody replaces catalog number LS-C19559. It has been validated for use in the following assays: IHC.
Target:	B-cell receptor-associated protein 31 (BCAP31)
Synonyms:	BCAP31 Antibody, 6C6-AG Antibody, BCR-associated protein 31 Antibody, BAP31 Antibody, BCR-associated protein Bap31 Antibody, DXS1357E Antibody, p28 Bap31 Antibody, CDM Antibody, p28 Antibody, Protein CDM Antibody
Host	BCAP31 antibody was produced in Rabbit
Clonality:	Polyclonal
Immunogen Species:	BCAP31 / BAP31 antibody was raised against Human
Antigen Type:	Synthetic peptide
Immunogen:	BCAP31 / BAP31 antibody was raised against synthetic peptide from human BCAP31 / BAP31.
Specificity:	17 amino acid peptide from near the carboxy terminus of human BAP31
Epitope:	C-Terminus
Reactivity:	Human, Mouse, Rat
Purification:	Immunoaffinity purified
Presentation:	PBS, 0.02% sodium azide.
Recommended Storage:	Short term 4°C, long term aliquot and store at -20°C, avoid freeze thaw cycles. Store undiluted.
Usage Summary:	Immunohistochemistry: LS-B449 was validated for use in immunohistochemistry on a panel of 21 formalin-fixed, paraffin-embedded (FFPE) human tissues after heat induced antigen retrieval in pH 6.0 citrate buffer. After incubation with the primary antibody, slides were incubated with biotinylated secondary antibody, followed by alkaline phosphatase-streptavidin and chromogen. The stained slides were evaluated by a pathologist to confirm staining specificity. The optimal working concentration for LS-B449 was determined to be 2.5 ug/ml.
Uses:	IHC - Paraffin (2.5 µg/ml), Western blot (Optimal dilution to be determined by the researcher)
Size:	50 µg
Concentration:	1 mg/ml

Immunohistochemistry Image:



Anti-BCAP31 / BAP31 antibody IHC of human brain, cerebellum. Immunohistochemistry of formalin-fixed, paraffin-embedded tissue after heat-induced antigen retrieval. Antibody LS-B449 concentration 5 ug/ml.

Western Blot Image:



Western blot of BAP31 in Ramos cell lysate with BAP31 antibody at (A) 0.5, (B) 1 and (C) 2ug/ml.

Requested From:	Japan
Laboratory Reagent For In Vitro Research Use Only	
Not for resale without prior written consent from LifeSpan BioSciences, Inc.	
Created on 9/23/2014	
© 2014 LifeSpan BioSciences	