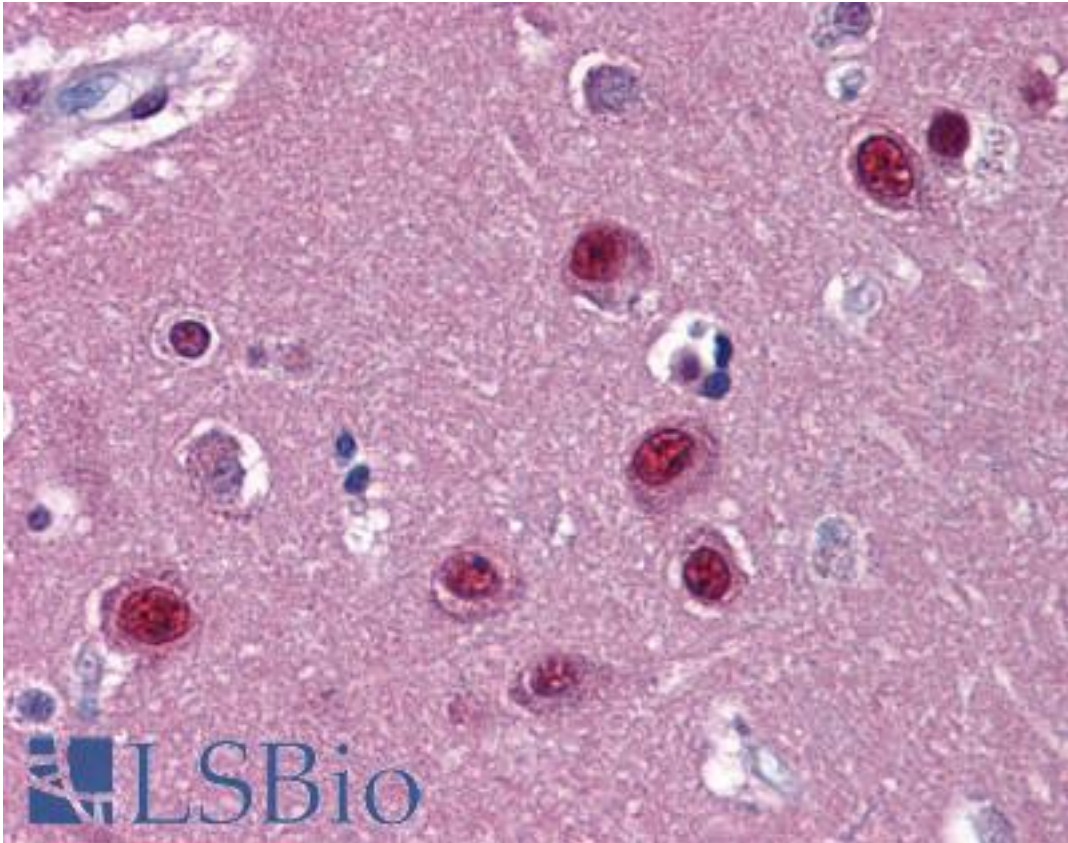


**NR1D1 Mouse anti-Human Monoclonal (4F6) Antibody - LS-B4487 - LSBio**

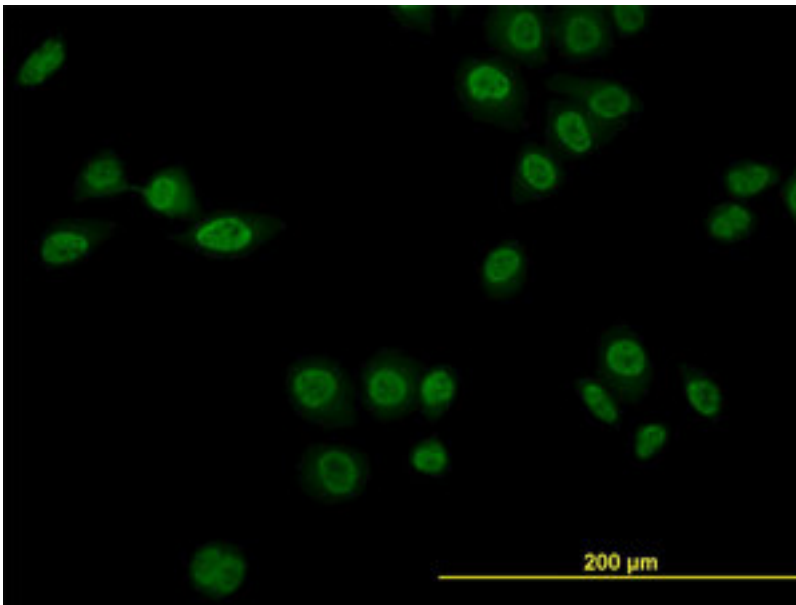
<b>CatalogID:</b>	LS-B4487
<b>Validation:</b>	This antibody replaces catalog number LS-C105084. It has been validated for use in the following assays: IHC-P.
<b>Target:</b>	nuclear receptor subfamily 1, group D, member 1 (NR1D1)
<b>Synonyms:</b>	NR1D1 Antibody, EAR1 Antibody, Rev-erbA-alpha Antibody, Reverba Antibody, Reverbaalpha Antibody, Rev-erb alpha Antibody, Rev-erba Antibody, Rev-erbalphal Antibody, RevErbAlpha Antibody, THRA1 Antibody, Rev-ErbAalpha Antibody, Ear-1 Antibody, HRev Antibody, THRAL Antibody, V-erbA-related protein 1 Antibody
<b>Family / Subfamily:</b>	NHR / NR1 Thyroid hormone-like
<b>Host</b>	NR1D1 antibody was produced in Mouse
<b>Clonality:</b>	Monoclonal
<b>Isotype:</b>	IgG1,k
<b>Clone Name:</b>	4F6
<b>Immunogen Species:</b>	NR1D1 antibody was raised against Human
<b>Antigen Type:</b>	Recombinant protein
<b>Immunogen:</b>	NR1D1 antibody was raised against nR1D1 (AAH56148, 1 a.a. ~ 615 a.a) full length recombinant protein with GST tag. MW of the GST tag alone is 26 KDa.
<b>Reactivity:</b>	Human, Mouse
<b>Purification:</b>	Protein A purified
<b>Presentation:</b>	PBS, pH 7.4. Sourced in Ascites.
<b>Recommended Storage:</b>	Store at -20°C or lower. Aliquot to avoid repeated freezing and thawing.
<b>Usage Summary:</b>	Western Blot (Cell lysate) - positive control Hela NE. Western Blot (Cell lysate) - positive control NIH/3T3. Western Blot (Transfected lysate) - positive control transfected 293T cell line. Immunofluorescence (10 ug/ml) - positive control HeLa cells. Sandwich ELISA (Recombinant protein). RNAi Knockdown (Antibody validated).
<b>Uses:</b>	IHC - Paraffin (5 µg/ml), Immunofluorescence (10 µg/ml), Western blot, ELISA, RNA interference (Optimal dilution to be determined by the researcher)
<b>Size:</b>	50 µg
<b>Concentration:</b>	0.5 mg/ml

**Immunohistochemistry Image:**



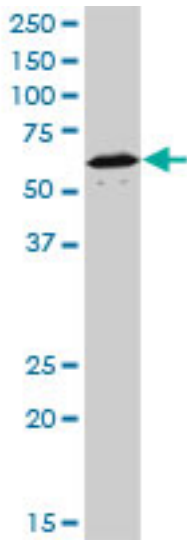
Anti-NR1D1 antibody IHC of human brain, cortex. Immunohistochemistry of formalin-fixed, paraffin-embedded tissue after heat-induced antigen retrieval. Antibody LS-B4487 concentration 5 ug/ml.

**Immunofluorescence Image:**



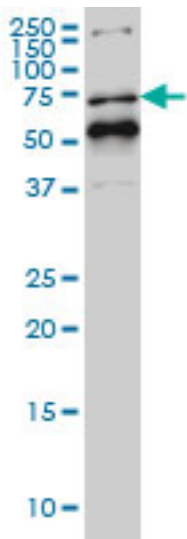
Immunofluorescence of monoclonal antibody to NR1D1 on HeLa cells (antibody concentration 10 ug/ml).

**Western Blot Image:**



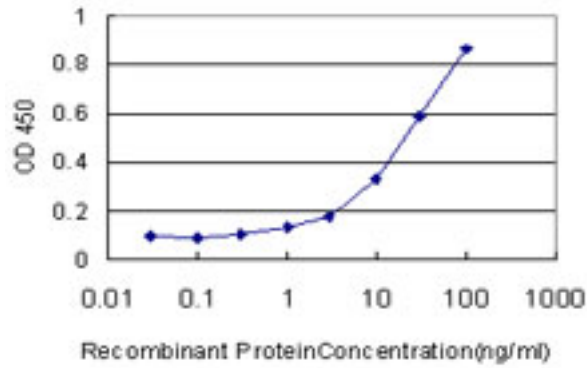
NR1D1 monoclonal antibody, clone 4F6. Western blot of NR1D1 expression in NIH/3T3.

**Western Blot Image:**



NR1D1 monoclonal antibody clone 4F6 Western blot of NR1D1 expression in HeLa NE.

**ELISA Image:**



Detection limit for recombinant GST tagged NR1D1 is approximately 1 ng/ml as a capture antibody.

**Requested From:**

Japan

Laboratory Reagent For In Vitro Research Use Only

Not for resale without prior written consent from LifeSpan BioSciences, Inc.

Created on 9/23/2014

© 2014 LifeSpan BioSciences