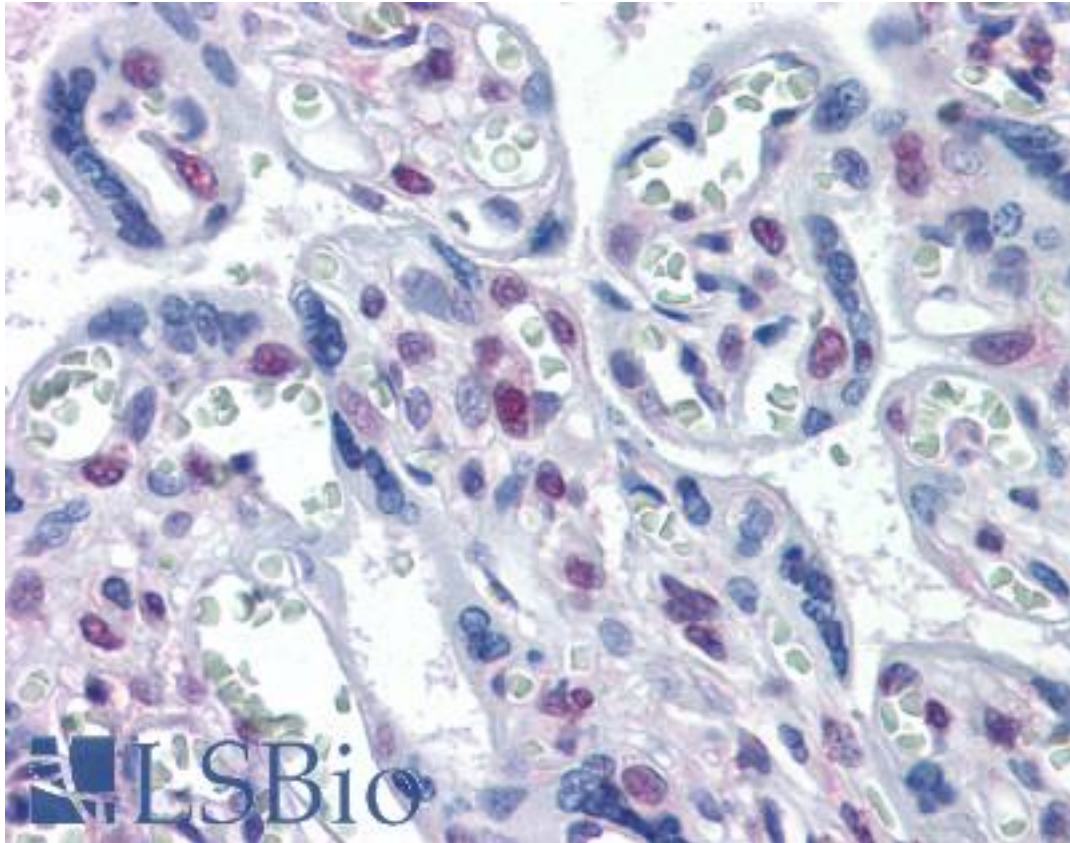


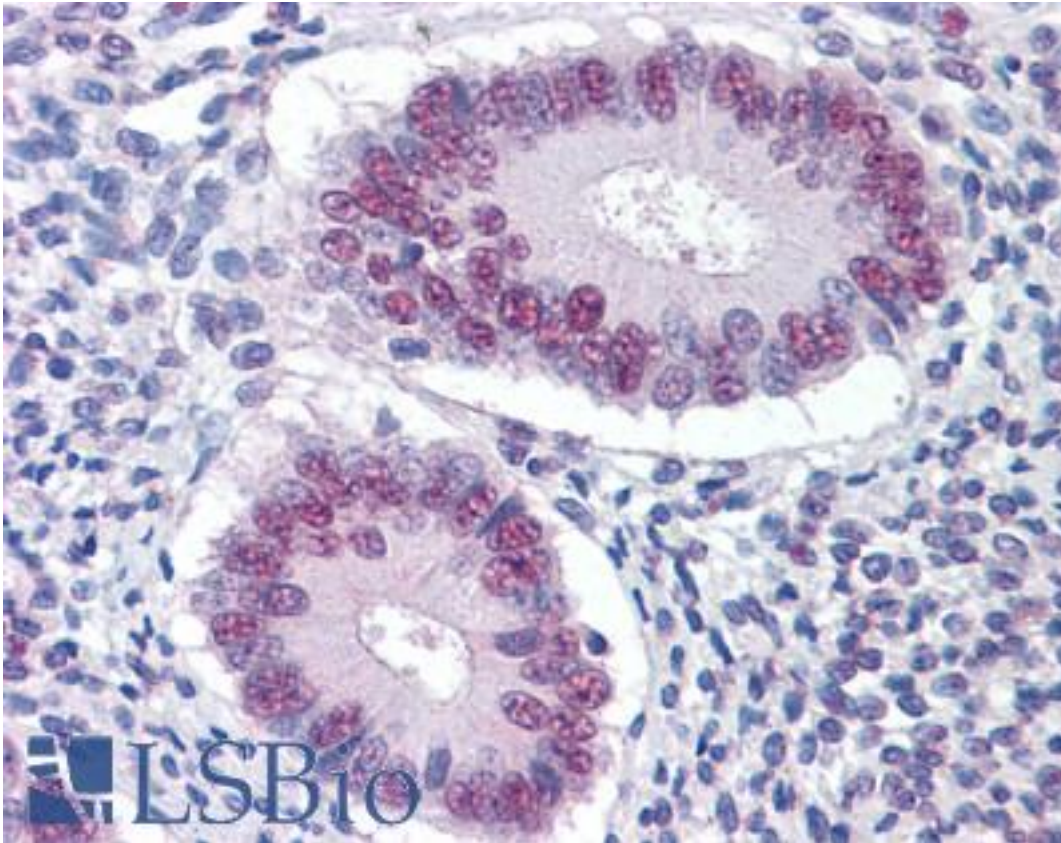
DRAK1 / STK17A Mouse anti-Human Monoclonal (4D12) Antibody - LS-B4482 - LSBio	
CatalogID:	LS-B4482
Validation:	This antibody replaces catalog number LS-C104914. It has been validated for use in the following assays: IHC-P.
Target:	serine/threonine kinase 17a (STK17A)
Synonyms:	STK17A Antibody, DRAK1 Antibody, Serine/threonine kinase 17a Antibody
Family / Subfamily:	Protein Kinase / DAPK
Host	STK17A antibody was produced in Mouse
Clonality:	Monoclonal
Isotype:	IgG2a,k
Clone Name:	4D12
Immunogen Species:	DRAK1 / STK17A antibody was raised against Human
Antigen Type:	Recombinant protein
Immunogen:	DRAK1 / STK17A antibody was raised against sTK17A (AAH47696, 301 a.a. ~ 414 a.a) partial recombinant protein with GST tag. MW of the GST tag alone is 26 KDa.
Reactivity:	Human
Purification:	Protein A purified
Presentation:	PBS, pH 7.2. Sourced in Ascites.
Recommended Storage:	Store at -20°C. Aliquot to avoid freeze/thaw cycles.
Usage Summary:	Western Blot (Cell lysate) - positive control HepG2. Western Blot (Transfected lysate) - positive control transfected 293T cell line. Sandwich ELISA (Recombinant protein). RNAi Knockdown (Antibody validated).
Uses:	IHC - Paraffin (5 µg/ml), Western blot, ELISA, RNA interference (Optimal dilution to be determined by the researcher)
Size:	50 µg
Concentration:	0.38 mg/ml

Immunohistochemistry Image:



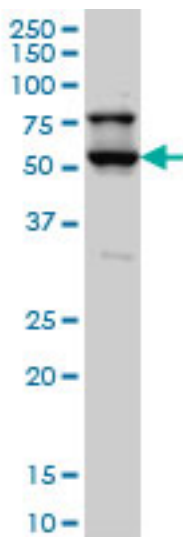
Anti-STK17A / DRAK1 antibody IHC of human placenta. Immunohistochemistry of formalin-fixed, paraffin-embedded tissue after heat-induced antigen retrieval. Antibody LS-B4482 concentration 5 ug/ml.

Immunohistochemistry Image:



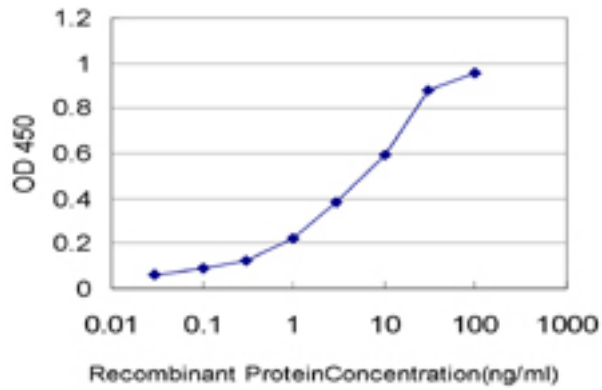
Anti-STK17A / DRAK1 antibody IHC of human uterus. Immunohistochemistry of formalin-fixed, paraffin-embedded tissue after heat-induced antigen retrieval. Antibody LS-B4482 concentration 5 ug/ml.

Western Blot Image:



STK17A monoclonal antibody clone 4D12 Western blot of STK17A expression in HepG2.

ELISA Image:



Detection limit for recombinant GST tagged STK17A is approximately 0.1 ng/ml as a capture antibody.

Requested From:

Japan

Laboratory Reagent For In Vitro Research Use Only

Not for resale without prior written consent from LifeSpan BioSciences, Inc.

Created on 9/23/2014

© 2014 LifeSpan BioSciences