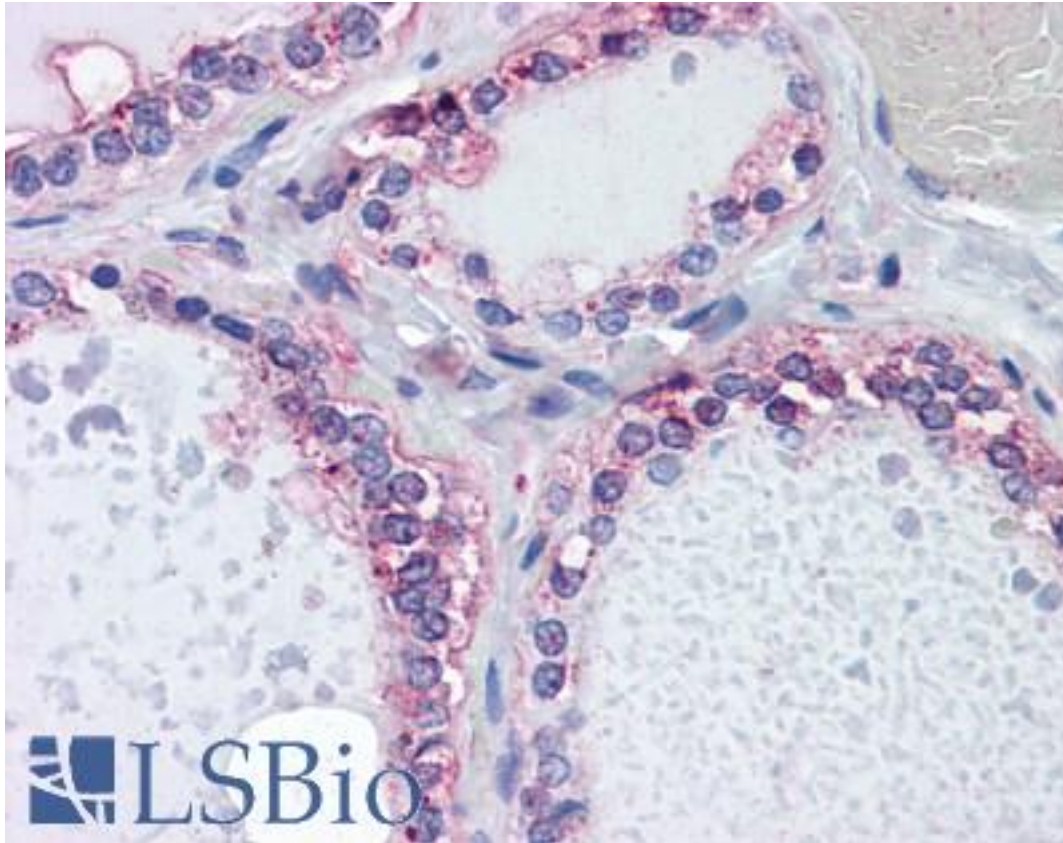


CDKL2 Mouse anti-Human Monoclonal (1F6) Antibody - LS-B4479 - LSBio

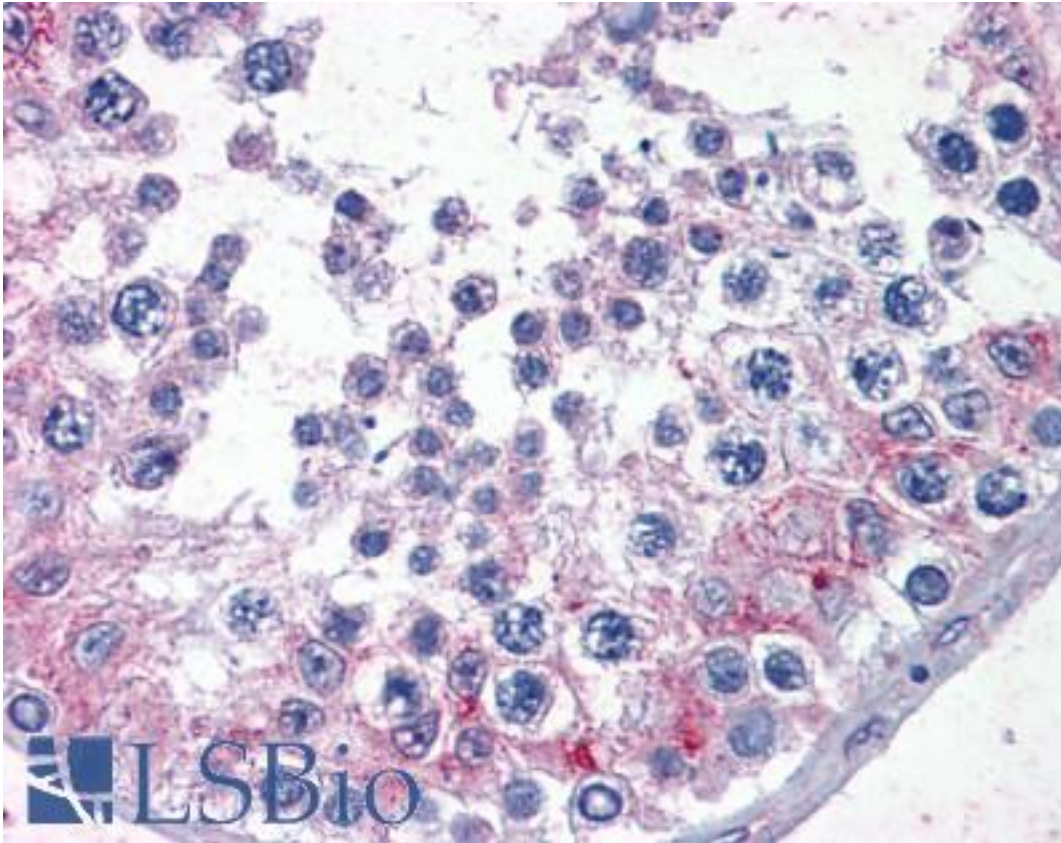
CatalogID:	LS-B4479
Validation:	This antibody replaces catalog number LS-C104906. It has been validated for use in the following assays: IHC-P.
Target:	cyclin-dependent kinase-like 2 (CDC2-related kinase) (CDKL2)
Synonyms:	CDKL2 Antibody, CDC2-related kinase Antibody, Cyclin-dependent kinase-like 2 Antibody, Kkm Antibody, KKIAMRE Antibody, Protein kinase p56 KKIAMRE Antibody, p56 KKIAMRE protein kinase Antibody, p56 Antibody
Family / Subfamily:	Protein Kinase / CDKL
Host	CDKL2 antibody was produced in Mouse
Clonality:	Monoclonal
Isotype:	IgG1,k
Clone Name:	1F6
Immunogen Species:	CDKL2 antibody was raised against Human
Antigen Type:	Recombinant protein
Immunogen:	CDKL2 antibody was raised against cDKL2 (NP_003939, 394 a.a. ~ 493 a.a) partial recombinant protein with GST tag. MW of the GST tag alone is 26 KDa.
Reactivity:	Human
Purification:	Protein A purified
Presentation:	PBS, pH 7.2
Recommended Storage:	Store at -20°C. Aliquot to avoid freeze/thaw cycles.
Usage Summary:	Western blot performed with the recombinant protein used as the immunogen as the protein source.
Uses:	IHC - Paraffin (5 µg/ml), Western blot, ELISA (Optimal dilution to be determined by the researcher)
Size:	50 µg

Immunohistochemistry Image:



Anti-CDKL2 antibody IHC of human thyroid. Immunohistochemistry of formalin-fixed, paraffin-embedded tissue after heat-induced antigen retrieval. Antibody LS-B4479 concentration 5 ug/ml.

Immunohistochemistry Image:



Anti-CDKL2 antibody IHC of human testis. Immunohistochemistry of formalin-fixed, paraffin-embedded tissue after heat-induced antigen retrieval. Antibody LS-B4479 concentration 5 ug/ml.

Requested From:

Japan

Laboratory Reagent For In Vitro Research Use Only

Not for resale without prior written consent from LifeSpan BioSciences, Inc.

Created on 9/23/2014

© 2014 LifeSpan BioSciences