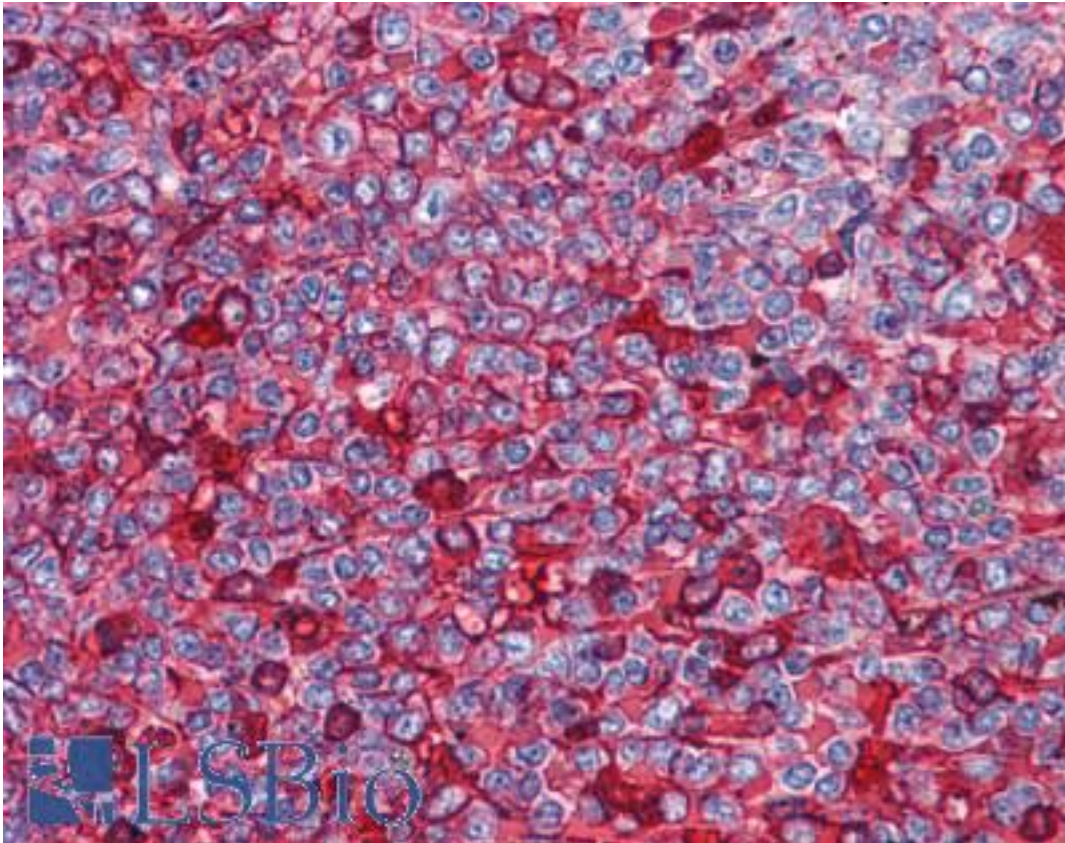


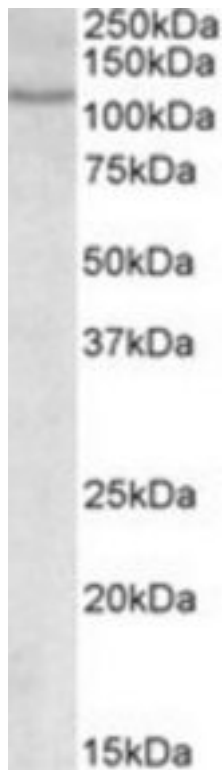
NFAT1 / NFATC2 Goat anti-Human Polyclonal (Internal) Antibody - LS-B4464 - LSBio	
CatalogID:	LS-B4464
Validation:	This antibody replaces catalog number LS-C108142. It has been validated for use in the following assays: IHC-P.
Target:	nuclear factor of activated T-cells, cytoplasmic, calcineurin-dependent 2 (NFATC2)
Synonyms:	NFATC2 Antibody, NF-ATc2 Antibody, NF-ATp Antibody, NFAT1 Antibody, NFAT pre-existing subunit Antibody, NFATP Antibody
Host	NFATC2 antibody was produced in Goat
Clonality:	Polyclonal
Immunogen Species:	NFAT1 / NFATC2 antibody was raised against Human
Antigen Type:	Synthetic peptide
Immunogen:	NFAT1 / NFATC2 antibody was raised against synthetic peptide C-QQFRTGLSSPDARYQ from an internal region of human NFATC2 (NP_036472.2; NP_775114.1; NP_001129493.1). Percent identity by BLAST analysis: Human, Gorilla, Gibbon, Monkey (100%); Mouse, Rat, Panda, Bovine, Dog, Bat, Horse, Pig (93%); Elephant, Rabbit, Opossum (87%).
Specificity:	Human NFATC2. This antibody is expected to recognize all three reported isoforms (NP_036472.2; NP_775114.1; NP_001129493.1).
Epitope:	Internal
Reactivity:	Human, Gorilla, Gibbon, Monkey
Predicted Reactivity:	Mouse, Rat, Bat, Bovine, Dog, Horse, Pig
Purification:	Immunoaffinity purified
Presentation:	Tris-buffered saline, pH 7.3, 0.5% BSA, 0.02% sodium azide
Recommended Storage:	Store at -20°C. Minimize freezing and thawing.
Usage Summary:	Western Blot: Approx 110kD band observed in Human lysates of cell line MOLT4 (calculated MW of 100kD according to NP_775114.1). Recommended concentration: 0.3-1 ug/ml.
Uses:	IHC - Paraffin (3.75 µg/ml), Western blot (0.3 - 1 µg/ml), ELISA (1:64000) (Optimal dilution to be determined by the researcher)
Size:	50 µg
Concentration:	0.5 mg/ml

Immunohistochemistry Image:



Anti-NFATC2 antibody IHC of human spleen. Immunohistochemistry of formalin-fixed, paraffin-embedded tissue after heat-induced antigen retrieval. Antibody LS-B4464 concentration 3.75 ug/ml.

Western Blot Image:



NFATC2 antibody (0.3 ug/ml) staining of MOLT4 lysate (35 ug protein in RIPA buffer).
Primary incubation was 1 hour. Detected by chemiluminescence.

Requested From:

Japan

Laboratory Reagent For In Vitro Research Use Only

Not for resale without prior written consent from LifeSpan BioSciences, Inc.

Created on 9/23/2014

© 2014 LifeSpan BioSciences