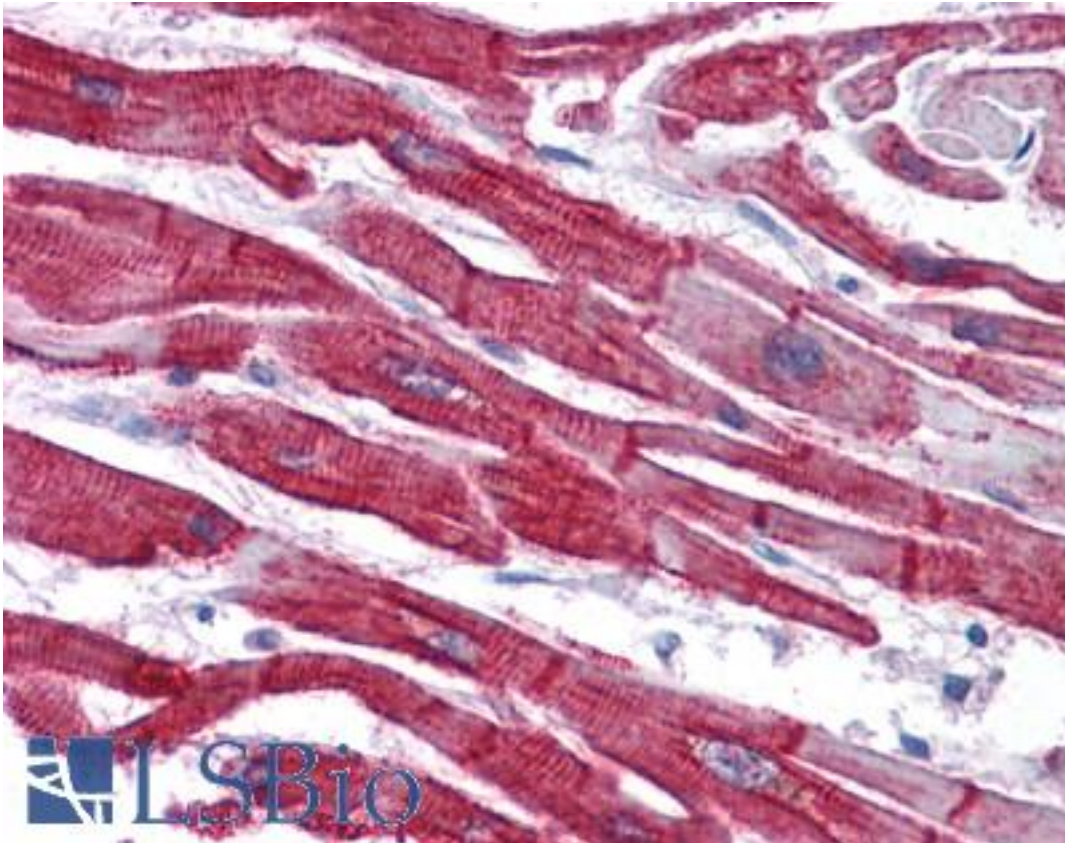


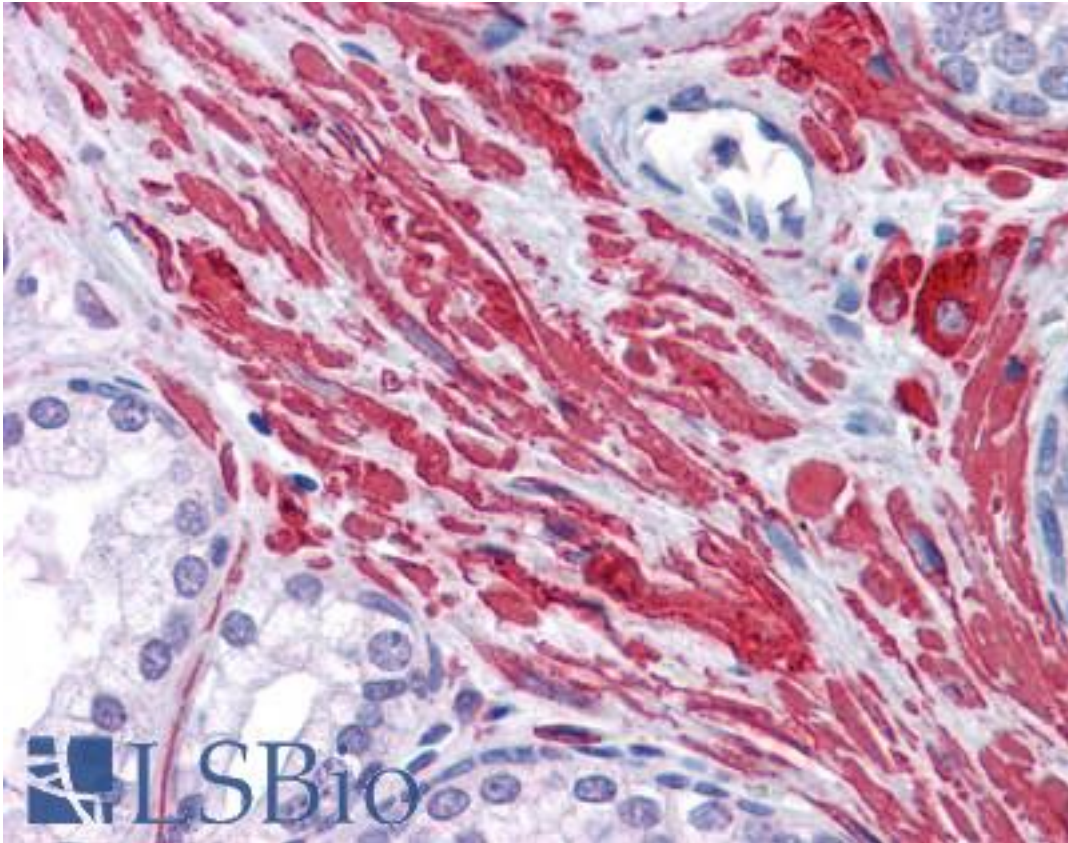
DES / Desmin Goat anti-Human Polyclonal (C-Terminus) Antibody - LS-B4463 - LSBio	
CatalogID:	LS-B4463
Validation:	This antibody replaces catalog number LS-C87392. It has been validated for use in the following assays: IHC-P.
Target:	desmin
Synonyms:	DES Antibody, ARVC7 Antibody, ARVD7 Antibody, CMD11 Antibody, CSM1 Antibody, CSM2 Antibody, MFM1 Antibody, SCPNK Antibody, Desmin Antibody, Intermediate filament protein Antibody
Host	DES antibody was produced in Goat
Clonality:	Polyclonal
Immunogen Species:	DES / Desmin antibody was raised against Human
Antigen Type:	Synthetic peptide
Immunogen:	DES / Desmin antibody was raised against synthetic peptide C-RDGEVVSEATQQQHE from the C-terminus of human DES / Desmin (NP_001918.3). Percent identity by BLAST analysis: Human, Gorilla, Gibbon, Baboon, Monkey, Galago, Marmoset, Mouse, Rat, Shrew, Hamster, Elephant, Panda, Bat, Bovine, Dog, Rabbit, Horse, Pig, Opossum, Turkey, Chicken, Armadillo (100%); Lizard (93%); Xenopus (80%).
Specificity:	Human DES / Desmin.
Epitope:	C-Terminus
Reactivity:	Human, Gorilla, Gibbon, Monkey, Mouse, Rat, Bat, Bovine, Dog, Hamster, Horse, Pig, Rabbit, Chicken
Purification:	Immunoaffinity purified
Presentation:	Tris-buffered saline, pH 7.3, 0.5% BSA, 0.02% sodium azide
Recommended Storage:	Store at -20°C. Minimize freezing and thawing.
Usage Summary:	Peptide ELISA: antibody detection limit dilution 1:2000. Western Blot: Approx. 55kD band observed in Human Skeletal Muscle lysates (calculated MW of 53.5kD according to NP_001918.3). Recommended concentration: 0.1-0.3 ug/ml.
Uses:	IHC - Paraffin (3.75 µg/ml), Western blot (0.1 - 0.3 µg/ml), ELISA (1:2000) (Optimal dilution to be determined by the researcher)
Size:	50 µg
Concentration:	0.5 mg/ml

Immunohistochemistry Image:



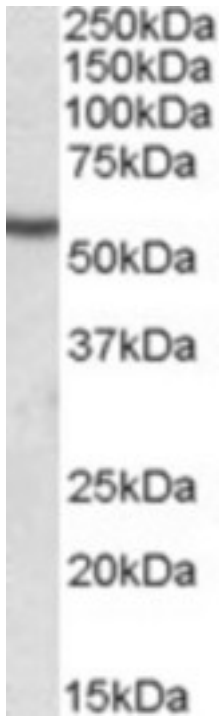
Anti-DES / Desmin antibody IHC of human heart. Immunohistochemistry of formalin-fixed, paraffin-embedded tissue after heat-induced antigen retrieval. Antibody LS-B4463 concentration 3.75 ug/ml.

Immunohistochemistry Image:



Anti-DES / Desmin antibody IHC of human prostate. Immunohistochemistry of formalin-fixed, paraffin-embedded tissue after heat-induced antigen retrieval. Antibody LS-B4463 concentration 3.75 ug/ml.

Western Blot Image:



Antibody (0.2 ug/ml) staining of Human Skeletal Muscle lysate (35 ug protein in RIPA buffer). Primary incubation was 1 hour. Detected by chemiluminescence.

Requested From:

Japan

Laboratory Reagent For In Vitro Research Use Only

Not for resale without prior written consent from LifeSpan BioSciences, Inc.

Created on 9/23/2014

© 2014 LifeSpan BioSciences