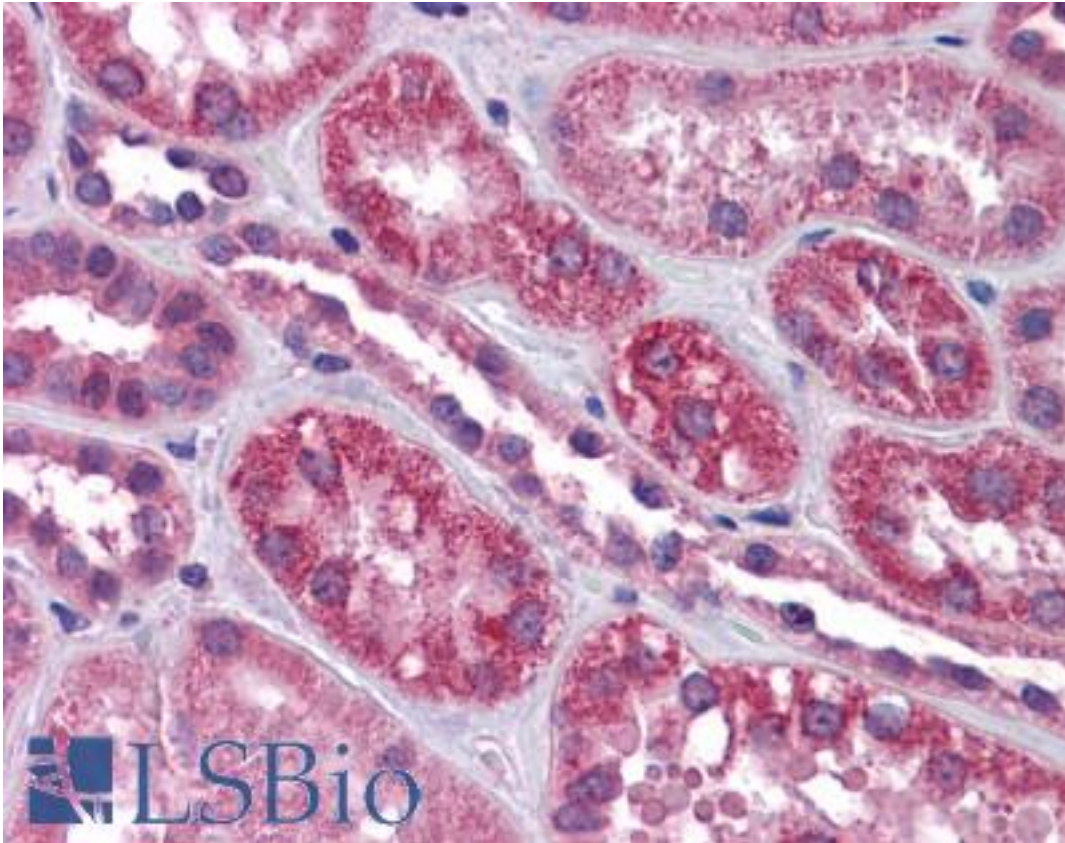


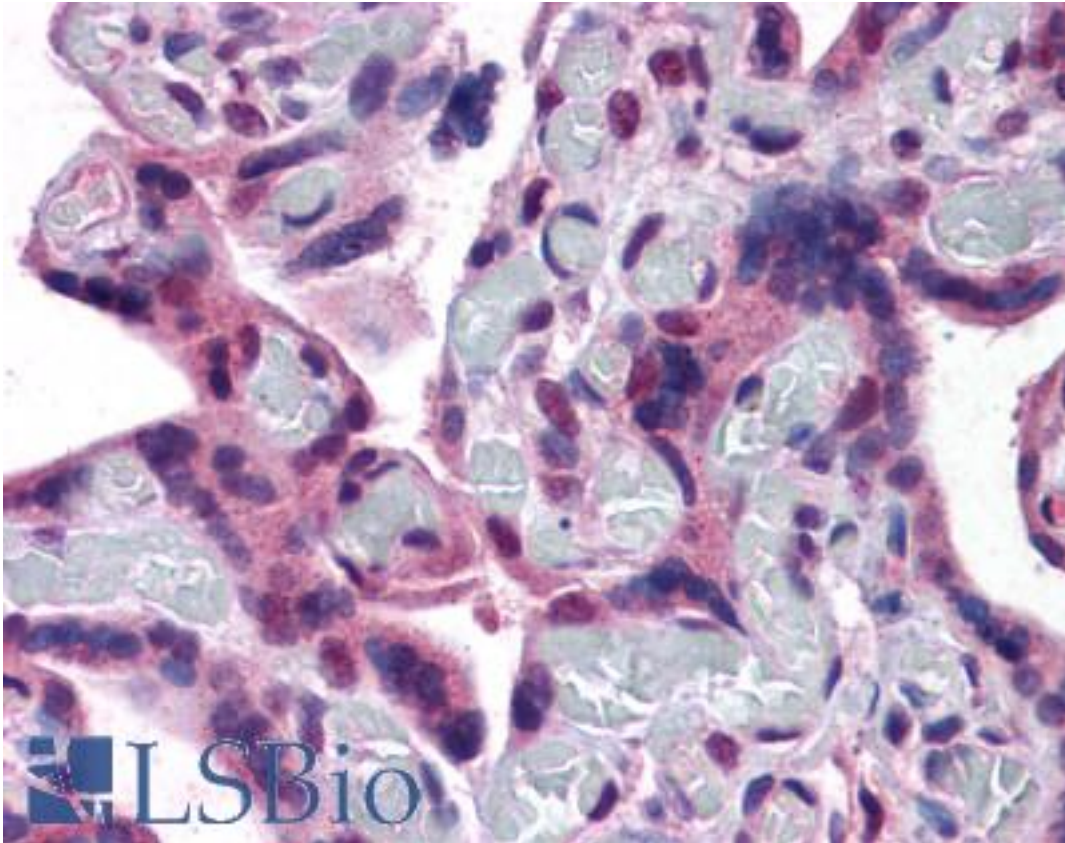
TRPC4 Goat anti-Human Polyclonal (C-Terminus) Antibody - LS-B4461 - LSBio	
CatalogID:	LS-B4461
Validation:	This antibody replaces catalog number LS-C87338. It has been validated for use in the following assays: IHC-P.
Target:	transient receptor potential cation channel, subfamily C, member 4 (TRPC4)
Synonyms:	TRPC4 Antibody, CCE1 Antibody, HTRP-4 Antibody, HTRP4 Antibody, TRP4 Antibody, STRPC4 Antibody, Trrp4 Antibody, Trp-related protein 4 Antibody
Family / Subfamily:	Ion Channel / Calcium channel - TRP
Host	TRPC4 antibody was produced in Goat
Clonality:	Polyclonal
Immunogen Species:	TRPC4 antibody was raised against Human
Antigen Type:	Synthetic peptide
Immunogen:	TRPC4 antibody was raised against synthetic peptide C-KHAKEEDSSIDYD from an internal region (near C-terminus) of human TRPC4 (NP_057263.1; NP_003297.1; NP_001129427.1; NP_001129429.1; NP_001129428.1; NP_001129430.1). Percent identity by BLAST analysis: Human, Gorilla, Dog (100%); Gibbon, Mouse, Rat, Hamster, Bovine (92%); Marmoset, Elephant, Panda, Pig (85%).
Specificity:	Human TRPC4. This antibody is expected to recognise all six reported isoforms (NP_057263.1; NP_003297.1; NP_001129427.1; NP_001129429.1; NP_001129428.1; NP_001129430.1).
Epitope:	C-Terminus
Reactivity:	Human, Gorilla, Rat, Dog
Predicted Reactivity:	Gibbon, Mouse, Bovine, Hamster
Purification:	Immunoaffinity purified
Presentation:	Tris-buffered saline, pH 7.3, 0.5% BSA, 0.02% sodium azide
Recommended Storage:	Store at -20°C. Minimize freezing and thawing.
Usage Summary:	Peptide ELISA: antibody detection limit dilution 1:32000. Western Blot: Approx. 110kD band observed in Rat Brain lysates (calculated MW of 112kD according to Human NP_057263.1 and to Rat NP_536321.1). Recommended concentration: 0.3 -1 ug/ml.
Uses:	IHC - Paraffin (4.75 µg/ml), Western blot (0.3 - 1 µg/ml), ELISA (1:32000) (Optimal dilution to be determined by the researcher)
Size:	50 µg
Concentration:	0.5 mg/ml

Immunohistochemistry Image:



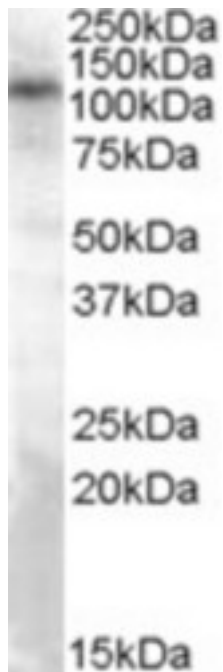
Anti-TRPC4 antibody IHC of human kidney. Immunohistochemistry of formalin-fixed, paraffin-embedded tissue after heat-induced antigen retrieval. Antibody LS-B4461 concentration 4.75 ug/ml.

Immunohistochemistry Image:



Anti-TRPC4 antibody IHC of human placenta. Immunohistochemistry of formalin-fixed, paraffin-embedded tissue after heat-induced antigen retrieval. Antibody LS-B4461 concentration 4.75 ug/ml.

Western Blot Image:



Antibody (0.3 ug/ml) staining of Rat Brain lysate (35 ug protein in RIPA buffer). Primary incubation was 1 hour. Detected by chemiluminescence.

Requested From:

Japan

Laboratory Reagent For In Vitro Research Use Only

Not for resale without prior written consent from LifeSpan BioSciences, Inc.

Created on 9/23/2014

© 2014 LifeSpan BioSciences