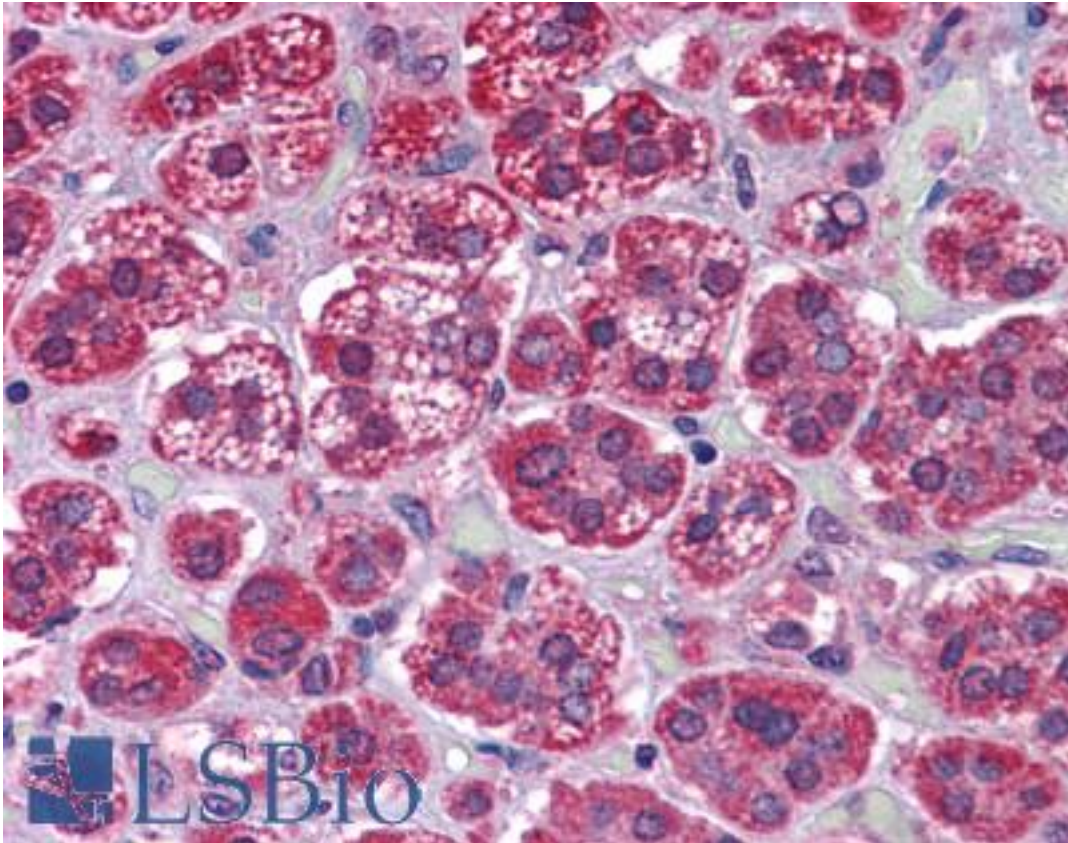


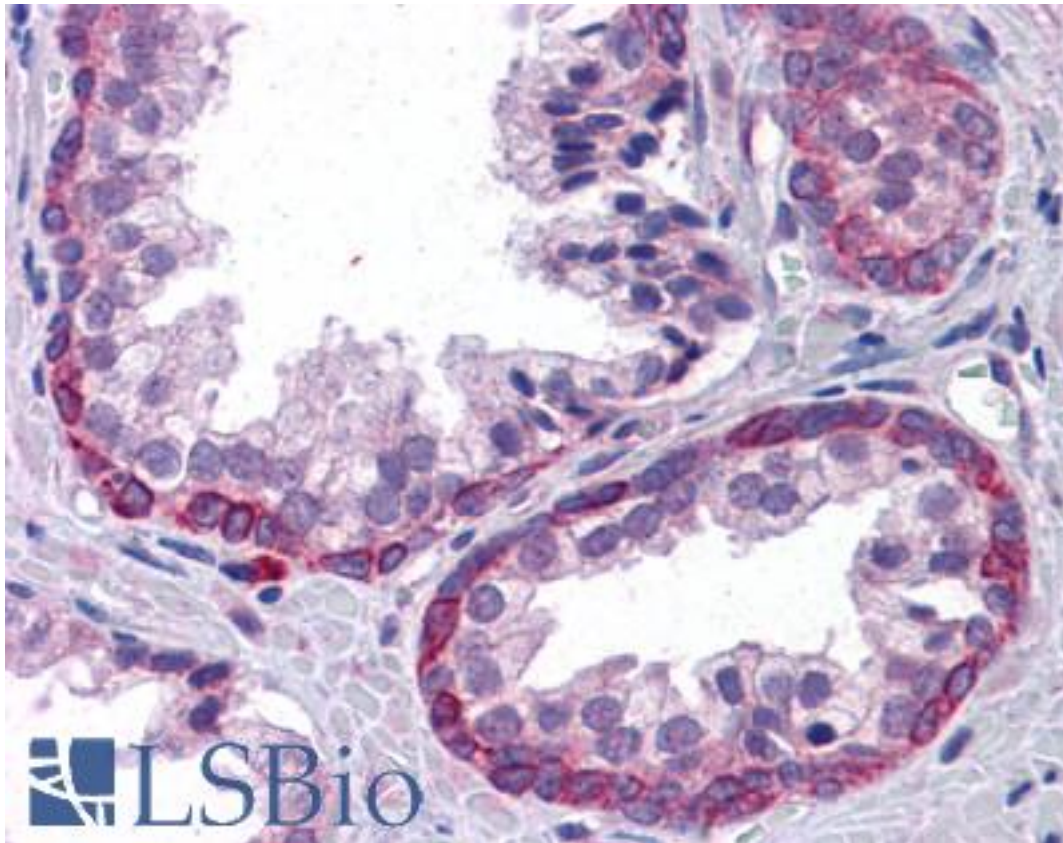
KPNA6 Goat anti-Human Polyclonal (Internal) Antibody - LS-B4460 - LSBio	
CatalogID:	LS-B4460
Validation:	This antibody replaces catalog number LS-C87276. It has been validated for use in the following assays: IHC-P.
Target:	karyopherin alpha 6 (importin alpha 7) (KPNA6)
Synonyms:	KPNA6 Antibody, Importin alpha 7 subunit Antibody, Importin subunit alpha-7 Antibody, Importin-alpha-S2 Antibody, IPOA7 Antibody, Karyopherin subunit alpha-6 Antibody
Host	KPNA6 antibody was produced in Goat
Clonality:	Polyclonal
Immunogen Species:	KPNA6 antibody was raised against Human
Antigen Type:	Synthetic peptide
Immunogen:	KPNA6 antibody was raised against synthetic peptide C-STTGESVITREMVE from an internal of human KPNA6 (NP_036448.1). Percent identity by BLAST analysis: Human, Gorilla, Orangutan, Monkey, Marmoset, Mouse, Rat, Hamster, Panda, Dog, Bat, Bovine, Horse, Rabbit, Pig (100%); Elephant, Opossum (93%).
Specificity:	Human KPNA6.
Epitope:	Internal
Reactivity:	Human, Gorilla, Orangutan, Monkey, Mouse, Rat, Bat, Bovine, Dog, Hamster, Horse, Pig, Rabbit
Purification:	Immunoaffinity purified
Presentation:	Tris-buffered saline, pH 7.3, 0.5% BSA, 0.02% sodium azide
Recommended Storage:	Store at -20°C. Minimize freezing and thawing.
Usage Summary:	Peptide ELISA: antibody detection limit dilution 1:128000. Western Blot: Approx 60kD band observed in Human Skeletal Muscle lysates (calculated MW of 60.0kD according to NP_036448.1). Recommended concentration:0.1-0.3 ug/ml. Some minor background is detected and is blocked by the immunizing peptide. We call for caution when used for other assays than Western blot.
Uses:	IHC - Paraffin (3.75 µg/ml), Western blot (0.1 - 0.3 µg/ml), ELISA (1:128000) (Optimal dilution to be determined by the researcher)
Size:	50 µg
Concentration:	0.5 mg/ml

Immunohistochemistry Image:



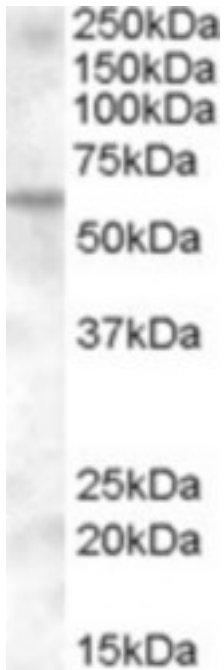
Anti-KPNA6 antibody IHC of human adrenal. Immunohistochemistry of formalin-fixed, paraffin-embedded tissue after heat-induced antigen retrieval. Antibody LS-B4460 concentration 3.75 ug/ml.

Immunohistochemistry Image:



Anti-KPNA6 antibody IHC of human prostate. Immunohistochemistry of formalin-fixed, paraffin-embedded tissue after heat-induced antigen retrieval. Antibody LS-B4460 concentration 3.75 ug/ml.

Western Blot Image:



Antibody (0.1 ug/ml) staining of Human Muscle lysate (35 ug protein in RIPA buffer). Primary incubation was 1 hour. Detected by chemiluminescence.

Requested From:

Japan

Laboratory Reagent For In Vitro Research Use Only

Not for resale without prior written consent from LifeSpan BioSciences, Inc.

Created on 9/23/2014

© 2014 LifeSpan BioSciences