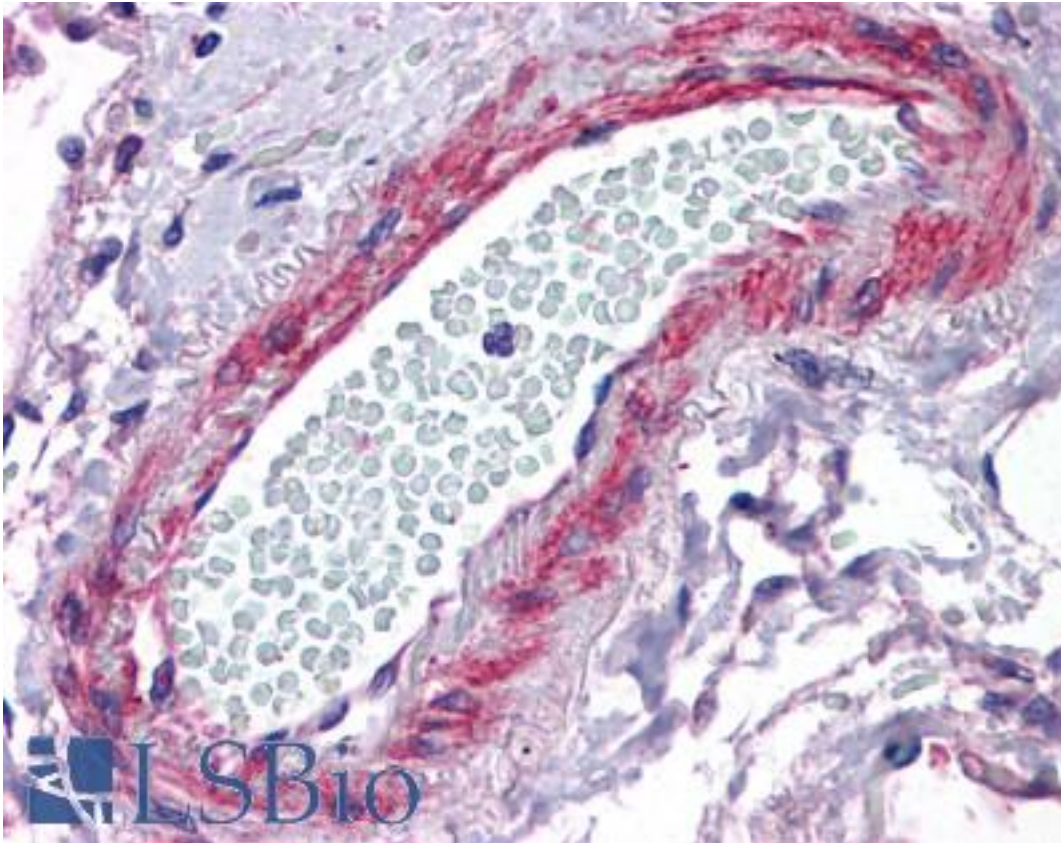


CSRP2 Goat anti-Human Polyclonal (Internal) Antibody - LS-B4459 - LSBio

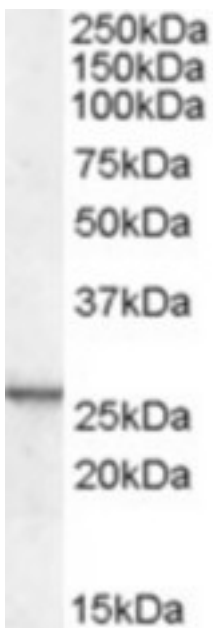
CatalogID:	LS-B4459
Validation:	This antibody replaces catalog number LS-C54683. It has been validated for use in the following assays: IHC-P.
Target:	cysteine and glycine-rich protein 2 (CSRP2)
Synonyms:	CSRP2 Antibody, CRP2 Antibody, LIM domain only protein 5 Antibody, LMO-5 Antibody, Smooth muscle cell LIM protein Antibody, SmLIM Antibody, LMO5 Antibody, Cysteine-rich protein 2 Antibody
Host	CSRP2 antibody was produced in Goat
Clonality:	Polyclonal
Immunogen Species:	CSRP2 antibody was raised against Human
Antigen Type:	Synthetic peptide
Immunogen:	CSRP2 antibody was raised against synthetic peptide C-ERLGIKPEVQP from an internal region of human CSRP2 (NP_001312.1). Percent identity by BLAST analysis: Human, Gorilla, Gibbon, Marmoset, Elephant, Bat, Bovine, Horse, Rabbit, Pig (100%); Mouse, Rat, Panda, Opossum, Platypus (92%); Dog (83%).
Specificity:	Human CSRP2.
Epitope:	Internal
Reactivity:	Human, Gorilla, Gibbon, Monkey, Mouse, Bat, Bovine, Horse, Pig, Rabbit
Predicted Reactivity:	Rat
Purification:	Immunoaffinity purified
Presentation:	Tris-buffered saline, pH 7.3, 0.5% BSA, 0.02% sodium azide
Recommended Storage:	Store at -20°C. Minimize freezing and thawing.
Uses:	IHC - Paraffin (3.75 µg/ml), Western blot (0.1 - 0.3 µg/ml), ELISA (1:64000) (Optimal dilution to be determined by the researcher)
Size:	50 µg
Concentration:	0.5 mg/ml

Immunohistochemistry Image:



Anti-CSRP2 antibody IHC of human lung, vessel. Immunohistochemistry of formalin-fixed, paraffin-embedded tissue after heat-induced antigen retrieval. Antibody LS-B4459 concentration 3.75 ug/ml.

Western Blot Image:



Antibody (0.1 ug/ml) staining of mouse kidney lysate (35 ug protein in RIPA buffer). Primary incubation was 1 hour. Detected by chemiluminescence.

Requested From:	Japan
Laboratory Reagent For In Vitro Research Use Only	
Not for resale without prior written consent from LifeSpan BioSciences, Inc.	
Created on 9/23/2014	
© 2014 LifeSpan BioSciences	