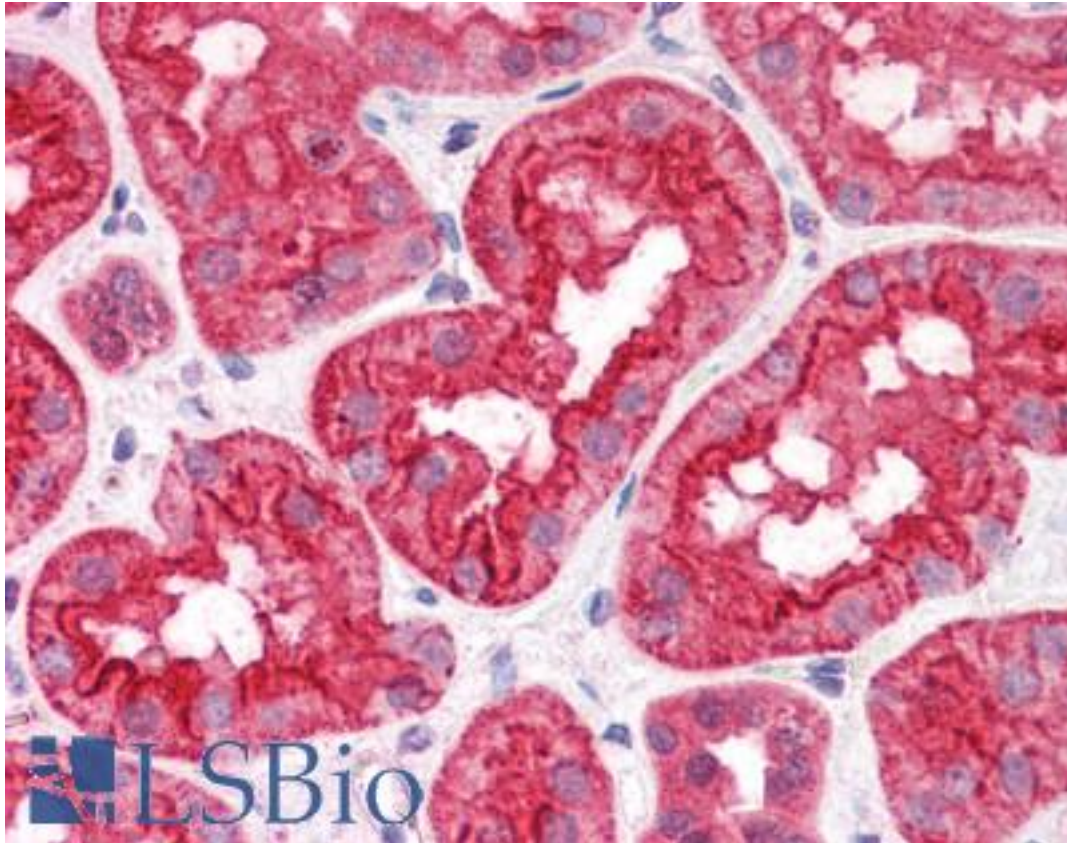


ABHD5 CGI58 Goat anti-Human Polyclonal (Internal) Antibody - LS-B4458 - LSBio

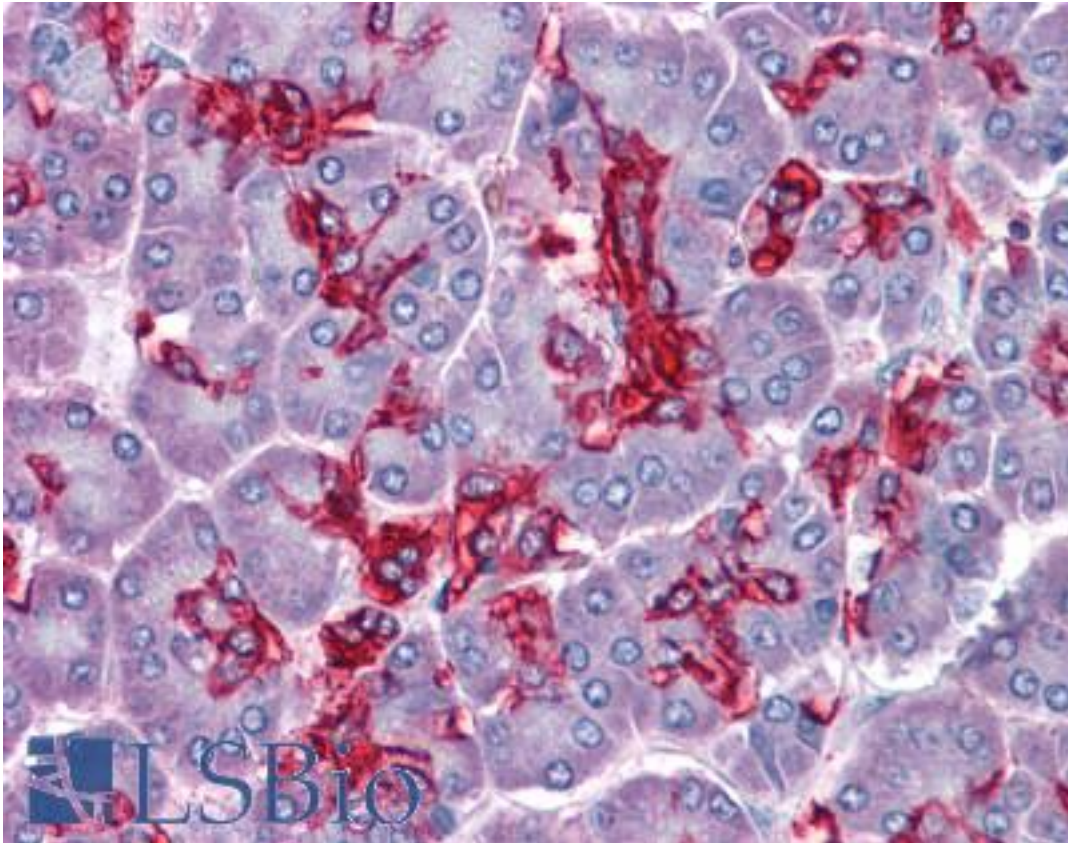
CatalogID:	LS-B4458
Validation:	This antibody replaces catalog number LS-C54647. It has been validated for use in the following assays: IHC-P.
Target:	abhydrolase domain containing 5 (ABHD5)
Synonyms:	ABHD5 Antibody, CDS Antibody, CGI-58 Antibody, IECN2 Antibody, NCIE2 Antibody, CGI58 Antibody
Host	ABHD5 antibody was produced in Goat
Clonality:	Polyclonal
Immunogen Species:	ABHD5 CGI58 antibody was raised against Human
Antigen Type:	Synthetic peptide
Immunogen:	ABHD5 CGI58 antibody was raised against synthetic peptide C-FPERPDLADQDR from an internal region of human ABHD5 / CGI-58 (NP_057090.2). Percent identity by BLAST analysis: Human, Gorilla, Orangutan, Gibbon, Monkey, Elephant, Panda, Dog, Bat, Horse, Rabbit (100%); Marmoset, Mouse, Rat, Sheep, Pig, Opossum, Platypus (92%); Bovine (83%).
Specificity:	Human ABHD5 / CGI-58. This antibody is not expected to cross-react with ABHD4.
Epitope:	Internal
Reactivity:	Human, Gorilla, Orangutan, Gibbon, Bat, Dog, Horse, Rabbit
Predicted Reactivity:	Monkey, Mouse, Rat, Pig, Sheep
Purification:	Immunoaffinity purified
Presentation:	Tris-buffered saline, pH 7.3, 0.5% BSA, 0.02% sodium azide
Recommended Storage:	Store at -20°C. Minimize freezing and thawing.
Uses:	IHC - Paraffin (3.75 µg/ml), Western blot (0.2 - 0.6 µg/ml), ELISA (1:16000) (Optimal dilution to be determined by the researcher)
Size:	50 µg
Concentration:	0.5 mg/ml

Immunohistochemistry Image:



Anti-ABHD5 / CGI-58 antibody IHC of human kidney. Immunohistochemistry of formalin-fixed, paraffin-embedded tissue after heat-induced antigen retrieval. Antibody LS-B4458 concentration 3.75 ug/ml.

Immunohistochemistry Image:



Anti-ABHD5 / CGI-58 antibody IHC of human pancreas. Immunohistochemistry of formalin-fixed, paraffin-embedded tissue after heat-induced antigen retrieval. Antibody LS-B4458 concentration 3.75 ug/ml.

Western Blot Image:



ABHD5 (0.2 ug/ml) staining of NIH3T3 lysate (35 ug protein in RIPA buffer). Primary incubation was 1 hour. Detected by chemiluminescence.

Requested From:

Japan

Laboratory Reagent For In Vitro Research Use Only

Not for resale without prior written consent from LifeSpan BioSciences, Inc.

Created on 9/23/2014

© 2014 LifeSpan BioSciences