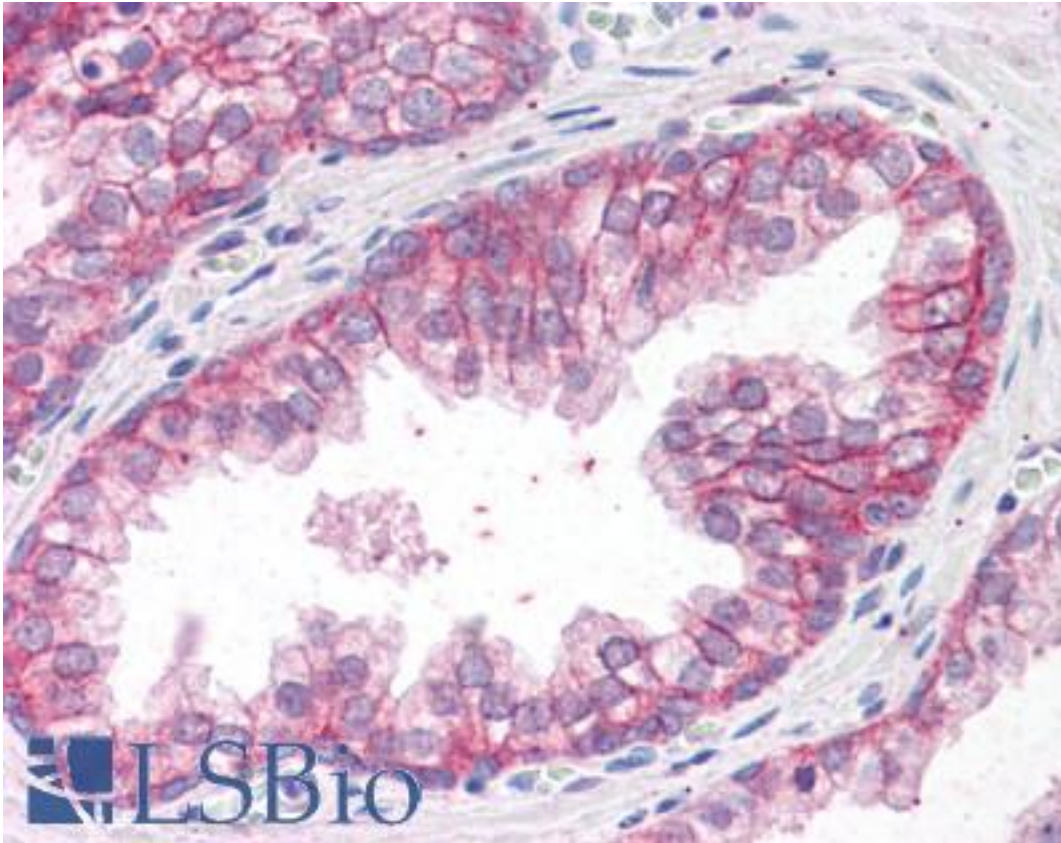


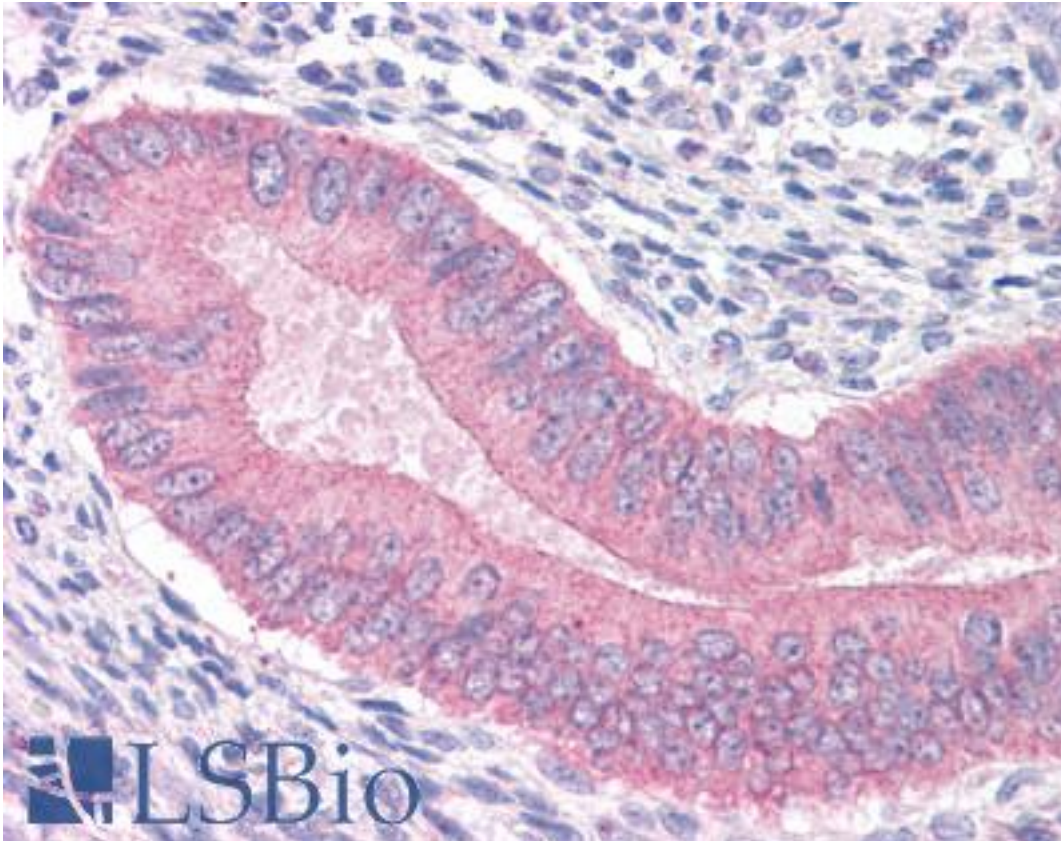
CTNNA1 Goat anti-Human Polyclonal (Internal) Antibody - LS-B4457 - LSBio	
CatalogID:	LS-B4457
Validation:	This antibody replaces catalog number LS-C54612. It has been validated for use in the following assays: IHC-P.
Target:	catenin (cadherin-associated protein), alpha 1, 102kDa (CTNNA1)
Synonyms:	CTNNA1 Antibody, AlphaE-catenin Antibody, Alpha-E-catenin Antibody, Alpha(E)-catenin Antibody, Alpha-1 catenin Antibody, Alpha-catenin Antibody, Cadherin-associated protein Antibody, Alpha E-catenin Antibody, CAP102 Antibody, Catenin alpha-1 Antibody
Family / Subfamily:	Catenin / not assigned-Catenin
Host	CTNNA1 antibody was produced in Goat
Clonality:	Polyclonal
Immunogen Species:	CTNNA1 antibody was raised against Human
Antigen Type:	Synthetic peptide
Immunogen:	CTNNA1 antibody was raised against synthetic peptide C-KREKQDETQTKIK from an internal region of human CTNNA1 (NP_001894.2). Percent identity by BLAST analysis: Human, Chimpanzee, Gorilla, Gibbon, Monkey, Marmoset, Mouse, Rat, Hamster, Elephant, Panda, Dog, Bat, Bovine, Horse, Rabbit, Opossum, Turkey, Chicken, Lizard, Xenopus (100%).
Specificity:	Human CTNNA1.
Epitope:	Internal
Reactivity:	Human, Chimpanzee, Gorilla, Gibbon, Monkey, Mouse, Rat, Bat, Bovine, Dog, Hamster, Horse, Rabbit, Chicken, Xenopus
Purification:	Immunoaffinity purified
Presentation:	Tris-buffered saline, pH 7.3, 0.5% BSA, 0.02% sodium azide
Recommended Storage:	Store at -20°C. Minimize freezing and thawing.
Uses:	IHC - Paraffin (3.75 µg/ml), Western blot (1 - 3 µg/ml), ELISA (1:32000) (Optimal dilution to be determined by the researcher)
Size:	50 µg
Concentration:	0.5 mg/ml

Immunohistochemistry Image:



Anti-CTNNA1 antibody IHC of human prostate. Immunohistochemistry of formalin-fixed, paraffin-embedded tissue after heat-induced antigen retrieval. Antibody LS-B4457 concentration 3.75 ug/ml.

Immunohistochemistry Image:



Anti-CTNNA1 antibody IHC of human uterus. Immunohistochemistry of formalin-fixed, paraffin-embedded tissue after heat-induced antigen retrieval. Antibody LS-B4457 concentration 3.75 ug/ml.

Western Blot Image:



Antibody (1 ug/ml) staining of human colon lysate (35 ug protein in RIPA buffer). Primary incubation was 1 hour. Detected by chemiluminescence.

Requested From:	Japan
Laboratory Reagent For In Vitro Research Use Only	
Not for resale without prior written consent from LifeSpan BioSciences, Inc.	
Created on 9/23/2014	
© 2014 LifeSpan BioSciences	