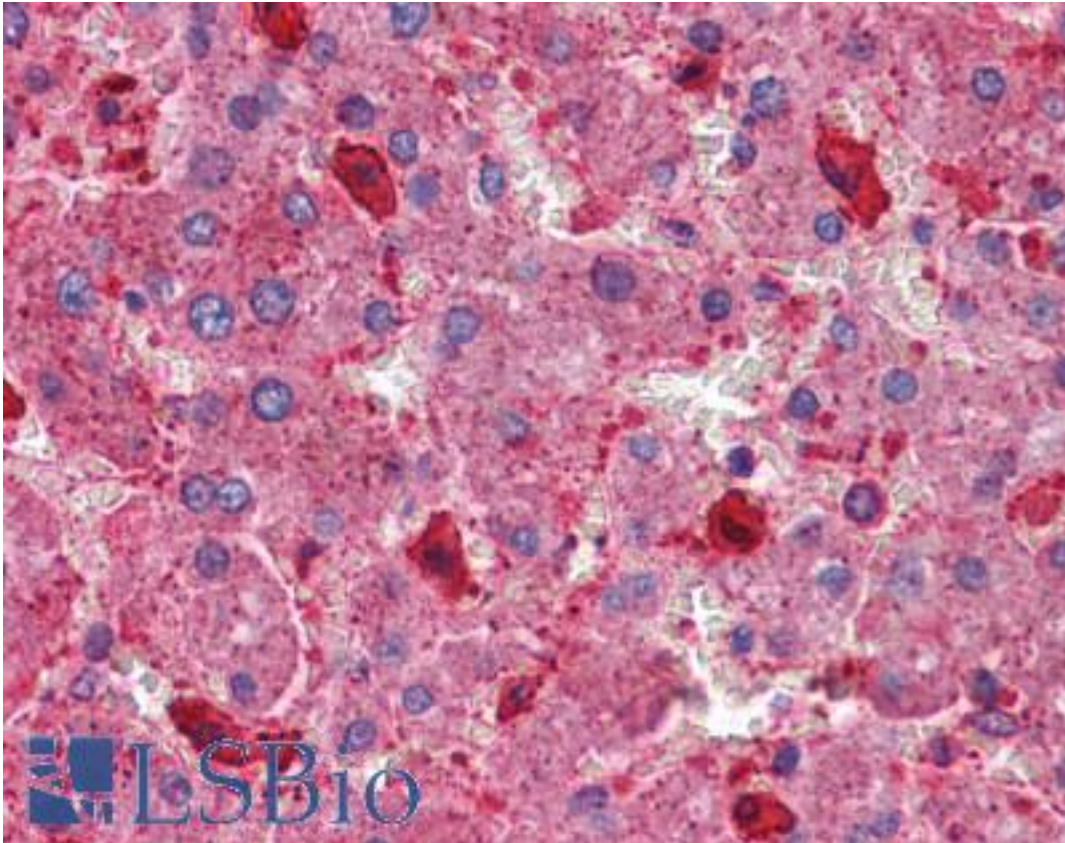


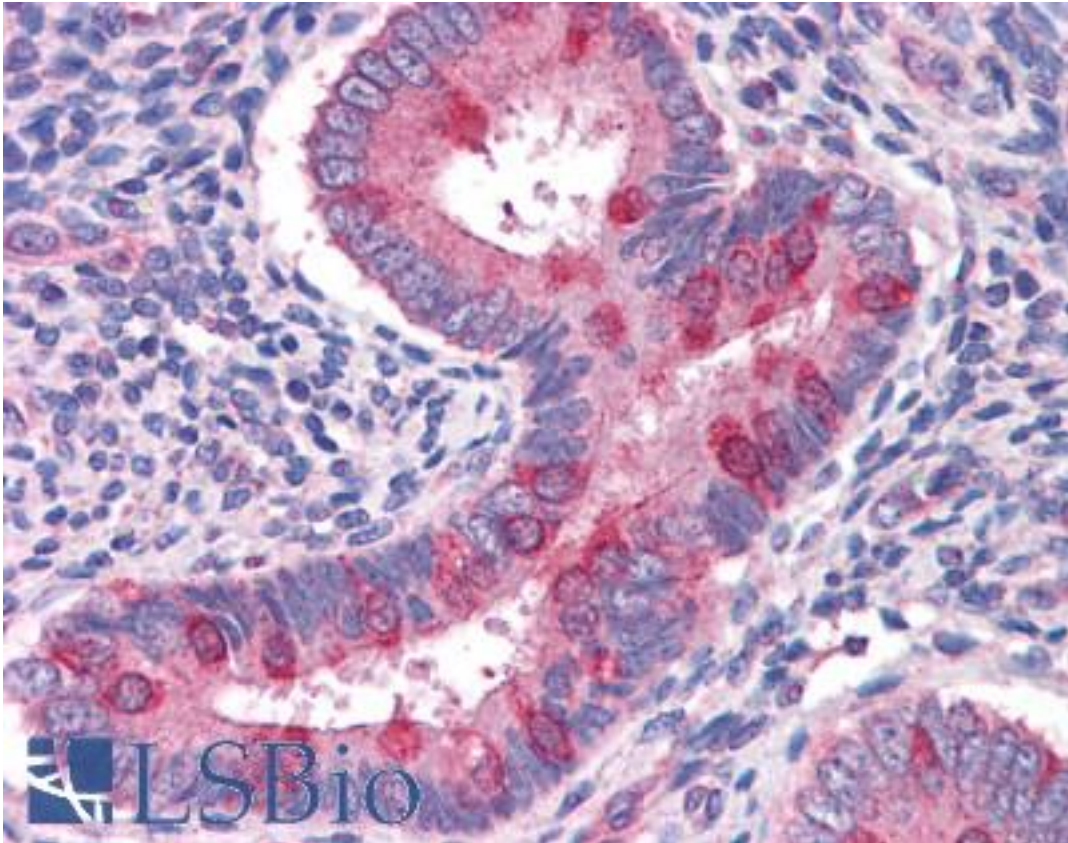
Hamartin / TSC1 Goat anti-Human Polyclonal (C-Terminus) Antibody - LS-B4456 - LSBio	
CatalogID:	LS-B4456
Validation:	This antibody replaces catalog number LS-C54956. It has been validated for use in the following assays: IHC-P.
Target:	tuberous sclerosis 1 (TSC1)
Synonyms:	TSC1 Antibody, LAM Antibody, Tuberous sclerosis 1 protein Antibody, Tuberous sclerosis 1 Antibody, Hamartin Antibody, KIAA0243 Antibody, TSC Antibody, Tumor suppressor Antibody
Host	TSC1 antibody was produced in Goat
Clonality:	Polyclonal
Immunogen Species:	Hamartin / TSC1 antibody was raised against Human
Antigen Type:	Synthetic peptide
Immunogen:	Hamartin / TSC1 antibody was raised against synthetic peptide C-QLHIMDYNETHHEH from the C-terminus of human TSC1 (NP_000359.1). Percent identity by BLAST analysis: Human, Gorilla, Orangutan, Gibbon, Monkey, Marmoset, Rat, Panda, Dog, Horse, Platypus (100%); Mouse, Hamster, Turkey (93%); Bat, Rabbit (86%).
Specificity:	Human TSC1. This antibody is expected to recognise isoform 1 (NP_000359.1) only.
Epitope:	C-Terminus
Reactivity:	Human, Gorilla, Orangutan, Gibbon, Monkey, Rat, Dog, Horse
Predicted Reactivity:	Mouse, Hamster
Purification:	Immunoaffinity purified
Presentation:	Tris-buffered saline, pH 7.3, 0.5% BSA, 0.02% sodium azide
Recommended Storage:	Store at -20°C. Minimize freezing and thawing.
Uses:	IHC - Paraffin (3.75 µg/ml), Western blot (0.1 - 0.3 µg/ml), ELISA (1:128000) (Optimal dilution to be determined by the researcher)
Size:	50 µg
Concentration:	0.5 mg/ml

Immunohistochemistry Image:



Anti-TSC1 antibody IHC of human liver. Immunohistochemistry of formalin-fixed, paraffin-embedded tissue after heat-induced antigen retrieval. Antibody LS-B4456 concentration 3.75 ug/ml.

Immunohistochemistry Image:



Anti-TSC1 antibody IHC of human uterus. Immunohistochemistry of formalin-fixed, paraffin-embedded tissue after heat-induced antigen retrieval. Antibody LS-B4456 concentration 3.75 ug/ml.

Western Blot Image:



Antibody (0.1 ug/ml) staining of Human Brain lysate (35 ug protein in RIPA buffer). Primary incubation was 1 hour. Detected by chemiluminescence.

Requested From:

Japan

Laboratory Reagent For In Vitro Research Use Only

Not for resale without prior written consent from LifeSpan BioSciences, Inc.

Created on 9/23/2014

© 2014 LifeSpan BioSciences