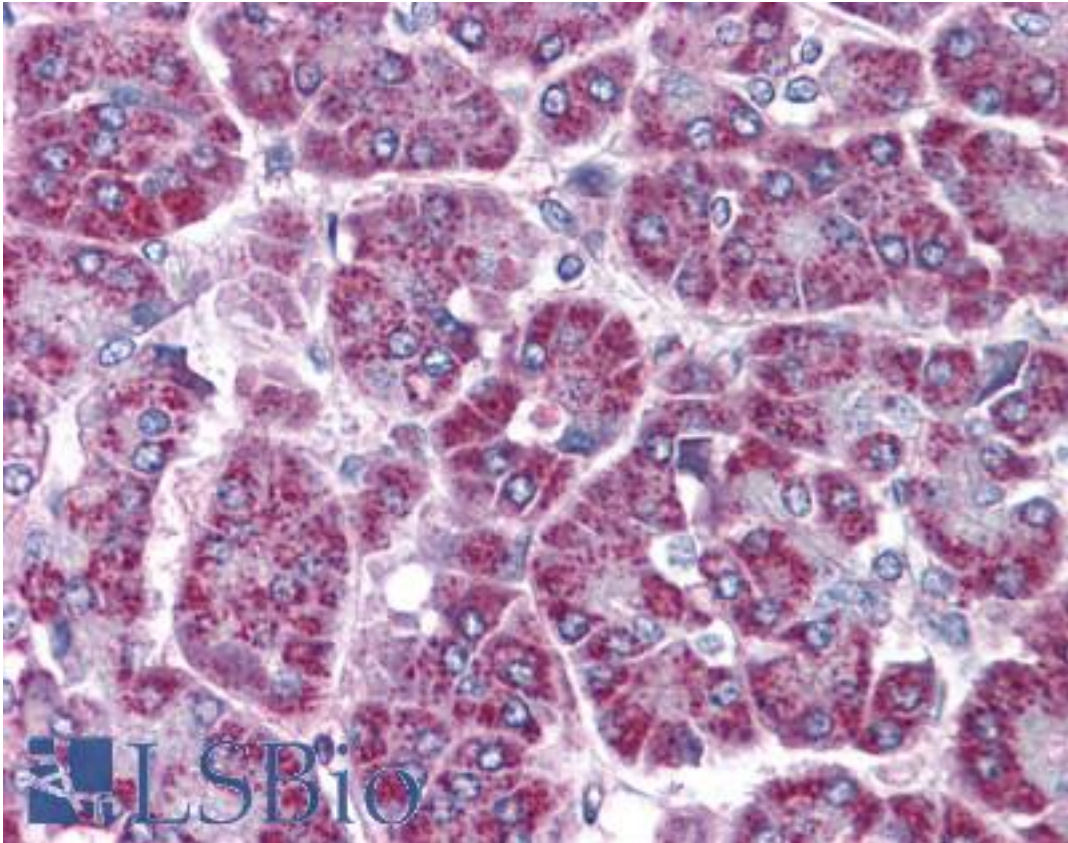


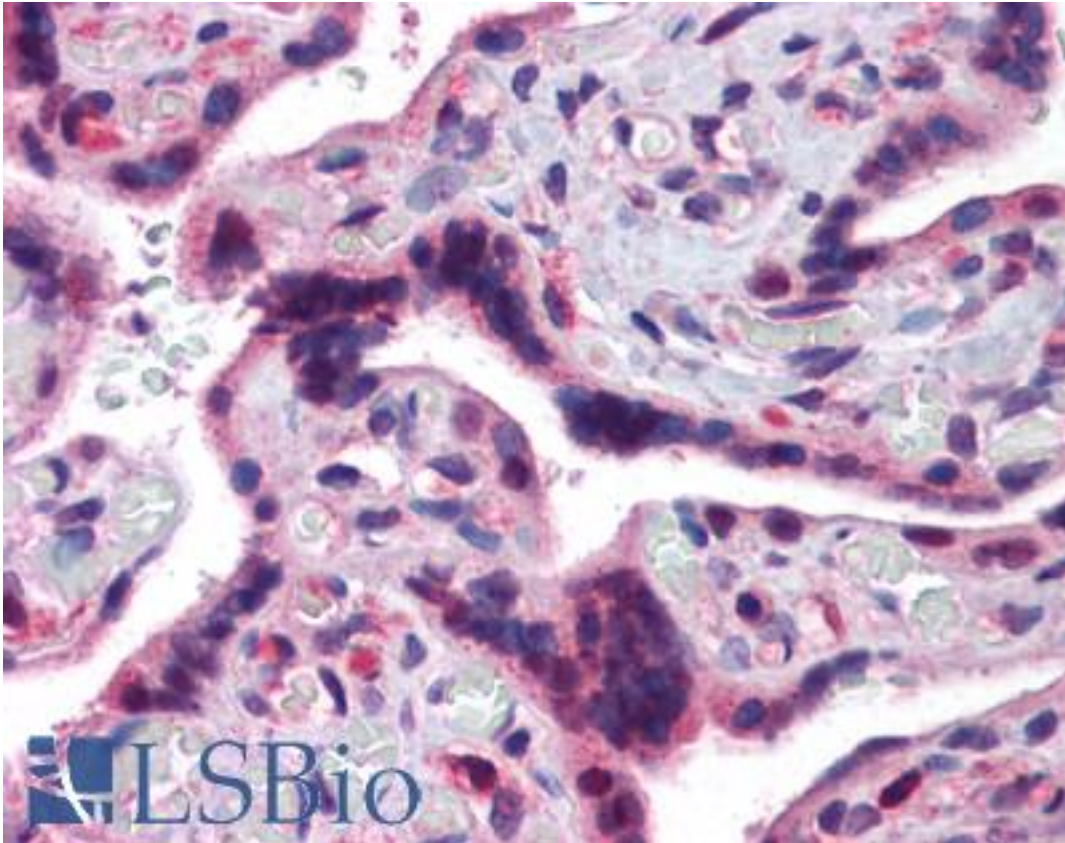
TRAP / TRAF2 Goat anti-Human Polyclonal (C-Terminus) Antibody - LS-B4455 - LSBio	
CatalogID:	LS-B4455
Validation:	This antibody replaces catalog number LS-C55612. It has been validated for use in the following assays: IHC-P.
Target:	TNF receptor-associated factor 2 (TRAF2)
Synonyms:	TRAF2 Antibody, MGC:45012 Antibody, TRAP3 Antibody
Host	TRAF2 antibody was produced in Goat
Clonality:	Polyclonal
Immunogen Species:	TRAP / TRAF2 antibody was raised against Human
Antigen Type:	Synthetic peptide
Immunogen:	TRAP / TRAF2 antibody was raised against synthetic peptide C-KMEAKNSYVRDD from the C-terminus of human TRAF2 (NP_066961.2). Percent identity by BLAST analysis: Human, Gorilla, Gibbon, Monkey, Marmoset, Mouse, Hamster, Elephant, Panda, Bovine, Dog, Horse (100%); Rat, Opossum, Turkey, Chicken (92%); Xenopus (83%).
Specificity:	Human TRAF2.
Epitope:	C-Terminus
Reactivity:	Human, Gorilla, Gibbon, Monkey, Mouse, Bovine, Dog, Hamster, Horse
Predicted Reactivity:	Rat, Chicken
Purification:	Immunoaffinity purified
Presentation:	Tris-buffered saline, pH 7.3, 0.5% BSA, 0.02% sodium azide
Recommended Storage:	Store at -20°C. Minimize freezing and thawing.
Uses:	IHC - Paraffin (3.75 µg/ml), Western blot (0.1 - 0.3 µg/ml), ELISA (1:128000) (Optimal dilution to be determined by the researcher)
Size:	50 µg
Concentration:	0.5 mg/ml

Immunohistochemistry Image:



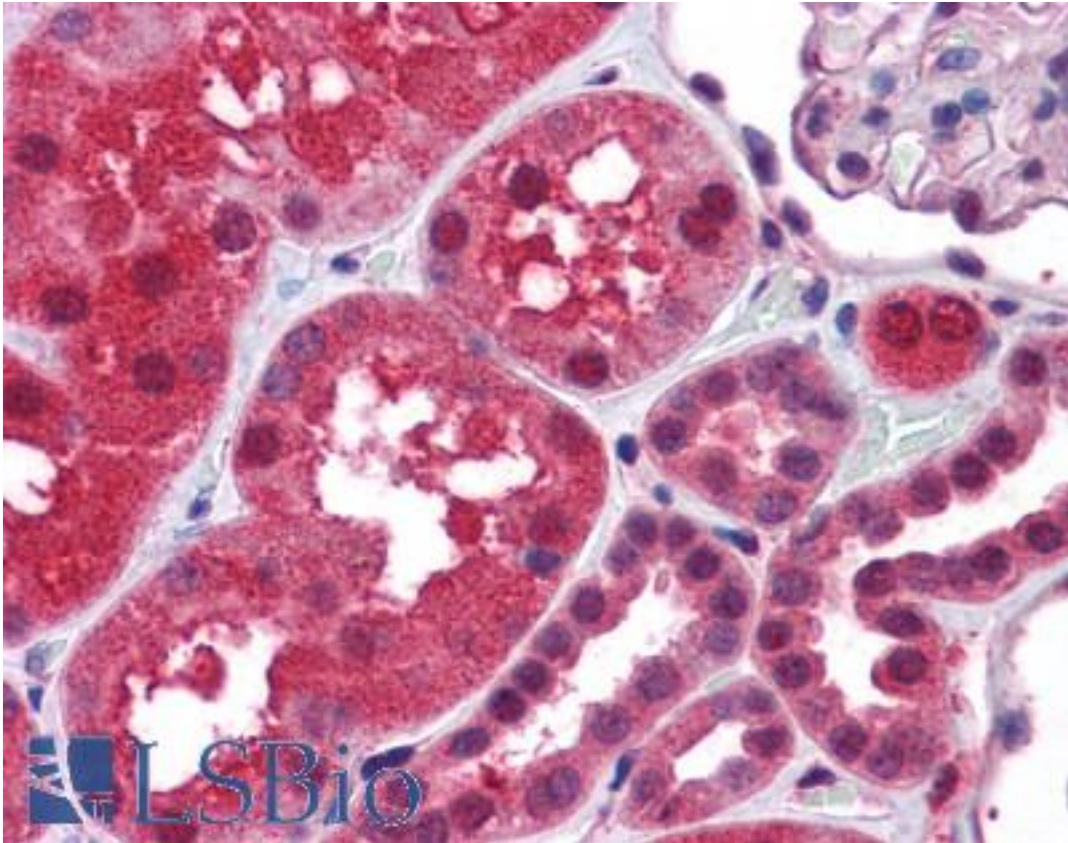
Anti-TRAF2 antibody IHC of human pancreas. Immunohistochemistry of formalin-fixed, paraffin-embedded tissue after heat-induced antigen retrieval. Antibody LS-B4455 concentration 3.75 ug/ml.

Immunohistochemistry Image:



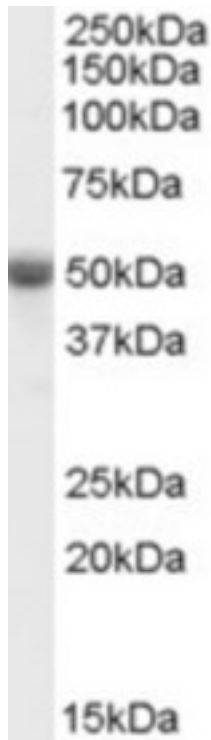
Anti-TRAF2 antibody IHC of human placenta. Immunohistochemistry of formalin-fixed, paraffin-embedded tissue after heat-induced antigen retrieval. Antibody LS-B4455 concentration 3.75 ug/ml.

Immunohistochemistry Image:



Anti-TRAF2 antibody IHC of human kidney. Immunohistochemistry of formalin-fixed, paraffin-embedded tissue after heat-induced antigen retrieval. Antibody LS-B4455 concentration 3.75 ug/ml.

Western Blot Image:



Antibody (0.1 ug/ml) staining of human ovary lysate (35 ug protein in RIPA buffer). Primary incubation was 1 hour. Detected by chemiluminescence.

Requested From:

Japan

Laboratory Reagent For In Vitro Research Use Only

Not for resale without prior written consent from LifeSpan BioSciences, Inc.

Created on 9/23/2014

© 2014 LifeSpan BioSciences