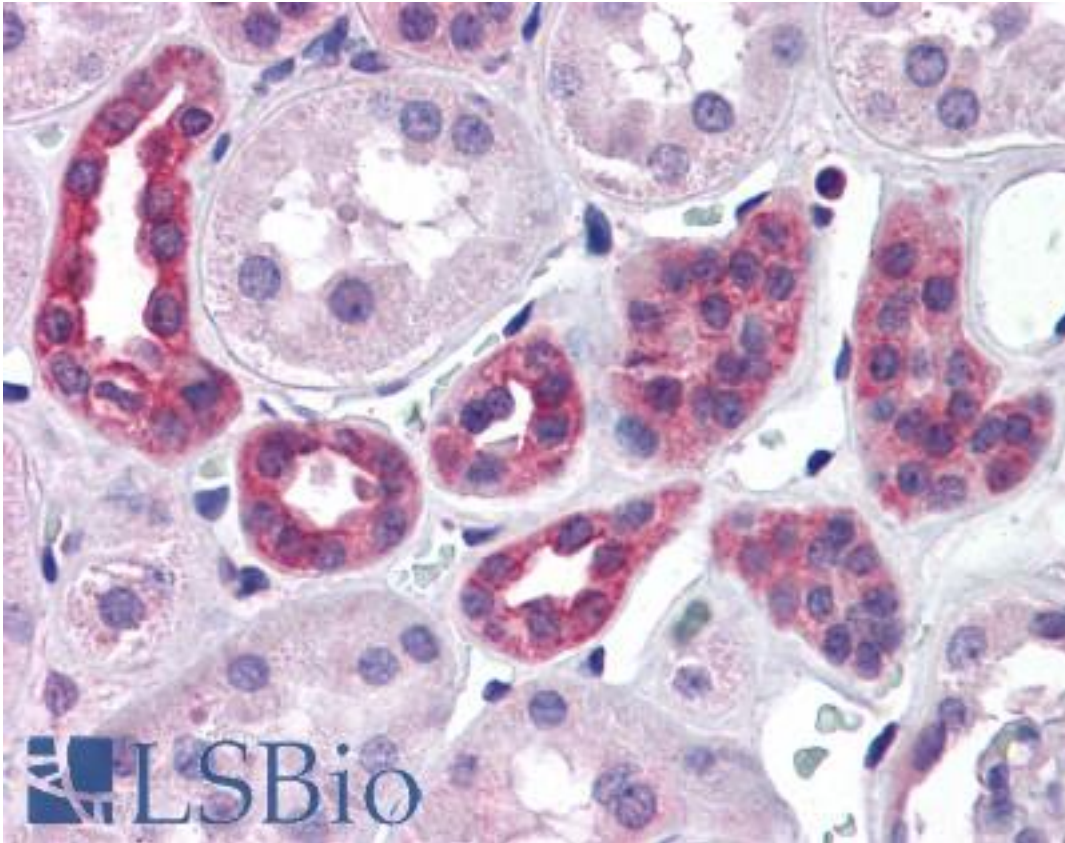


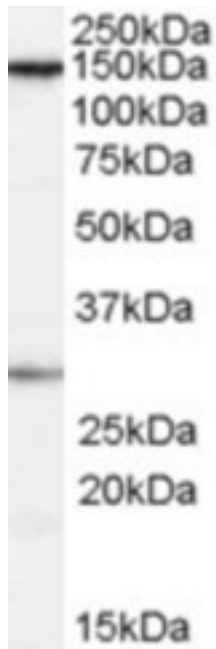
SUPT16H / FACTP140 Goat anti-Human Polyclonal (Internal) Antibody - LS-B4454 - LSBio	
CatalogID:	LS-B4454
Validation:	This antibody replaces catalog number LS-C54809. It has been validated for use in the following assays: IHC-P.
Target:	suppressor of Ty 16 homolog (S. cerevisiae) (SUPT16H)
Synonyms:	SUPT16H Antibody, CDC68 Antibody, FACT140 Antibody, FACT Antibody, FACT complex subunit SPT16 Antibody, FACT 140 kDa subunit Antibody, HSPT16 Antibody, SPT16/CDC68 Antibody, FACTP140 Antibody
Host	SUPT16H antibody was produced in Goat
Clonality:	Polyclonal
Immunogen Species:	SUPT16H / FACTP140 antibody was raised against Human
Antigen Type:	Synthetic peptide
Immunogen:	SUPT16H / FACTP140 antibody was raised against synthetic peptide C-DLTNKEGKKPEEK from an internal region of human SUPT16H (NP_009123.1). Percent identity by BLAST analysis: Human, Gorilla, Orangutan, Gibbon, Monkey, Marmoset, Mouse, Rat, Goat, Hamster, Panda, Bovine, Dog, Bat, Pig, Opossum, Platypus (100%); Elephant, Horse (92%).
Specificity:	Human SUPT16H.
Epitope:	Internal
Reactivity:	Human, Gorilla, Orangutan, Gibbon, Monkey, Mouse, Rat, Bat, Bovine, Dog, Goat, Hamster, Pig
Predicted Reactivity:	Horse
Purification:	Immunoaffinity purified
Presentation:	Tris-buffered saline, pH 7.3, 0.5% BSA, 0.02% sodium azide
Recommended Storage:	Store at -20°C. Minimize freezing and thawing.
Uses:	IHC - Paraffin (3.75 µg/ml), Western blot (0.1 - 0.3 µg/ml), ELISA (1:8000) (Optimal dilution to be determined by the researcher)
Size:	50 µg
Concentration:	0.5 mg/ml

Immunohistochemistry Image:



Anti-SUPT16H antibody IHC of human kidney. Immunohistochemistry of formalin-fixed, paraffin-embedded tissue after heat-induced antigen retrieval. Antibody LS-B4454 concentration 3.75 ug/ml.

Western Blot Image:



Antibody (0.1 ug/ml) staining of HeLa cell lysate (35 ug protein in RIPA buffer). Primary incubation was 1 hour. Detected by chemiluminescence.

Requested From:

Japan

Laboratory Reagent For In Vitro Research Use Only

Not for resale without prior written consent from LifeSpan BioSciences, Inc.

Created on 9/23/2014

© 2014 LifeSpan BioSciences