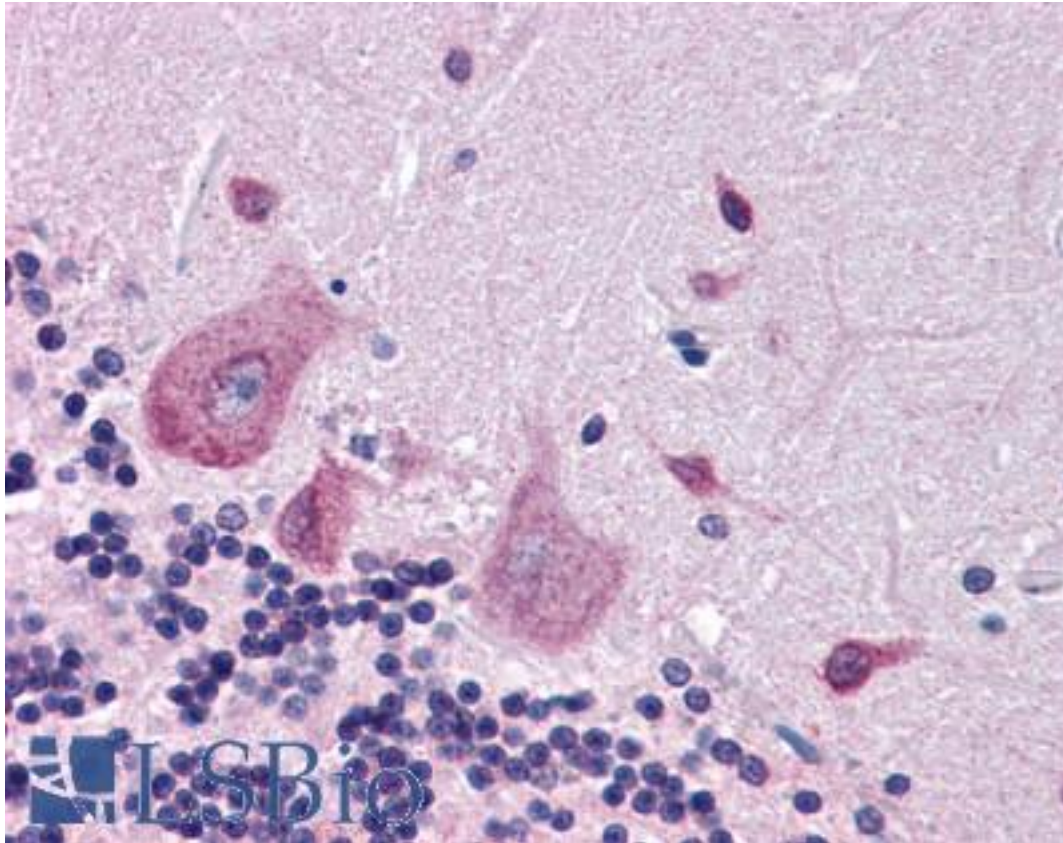


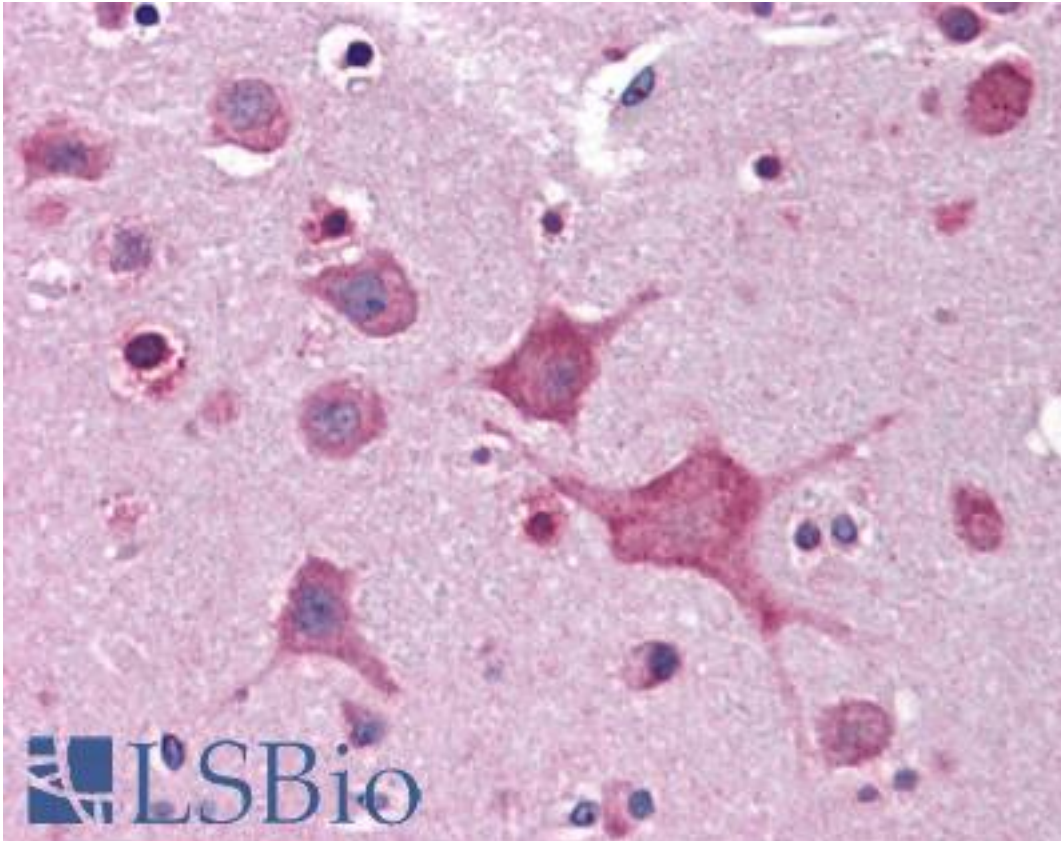
Dipeptidylpeptidase 10 / DPP10 Goat anti-Human Polyclonal (Internal) Antibody - LS-B4452 - LSBio	
<b>CatalogID:</b>	LS-B4452
<b>Validation:</b>	This antibody replaces catalog number LS-C54721. It has been validated for use in the following assays: IHC-P.
<b>Target:</b>	dipeptidyl-peptidase 10 (non-functional) (DPP10)
<b>Synonyms:</b>	DPP10 Antibody, Dipeptidyl peptidase X Antibody, Dipeptidyl-peptidase 10 Antibody, Dipeptidylpeptidase 10 Antibody, DPL2 Antibody, DPRP-3 Antibody, DPRP3 Antibody, Dipeptidyl peptidase 10 Antibody, DPPY Antibody, KIAA1492 Antibody, DPP X Antibody
<b>Family / Subfamily:</b>	Protease / Serine S9B
<b>Host</b>	DPP10 antibody was produced in Goat
<b>Clonality:</b>	Polyclonal
<b>Immunogen Species:</b>	Dipeptidylpeptidase 10 / DPP10 antibody was raised against Human
<b>Antigen Type:</b>	Synthetic peptide
<b>Immunogen:</b>	Dipeptidylpeptidase 10 / DPP10 antibody was raised against synthetic peptide C-DEGHNVSEKSKYHL from an internal region of human DPP10 (NP_065919.2; NP_001004360.2). Percent identity by BLAST analysis: Human, Gorilla, Monkey, Marmoset, Panda, Bovine, Horse, Rabbit, Pig (100%); Gibbon, Dog (93%); Elephant, Bat (86%).
<b>Specificity:</b>	Human DPP10. This antibody is expected to recognise both reported isoforms NP_065919.2 and NP_001004360.2.
<b>Epitope:</b>	Internal
<b>Reactivity:</b>	Human, Gorilla, Monkey, Bovine, Horse, Pig, Rabbit
<b>Predicted Reactivity:</b>	Gibbon, Dog
<b>Purification:</b>	Immunoaffinity purified
<b>Presentation:</b>	Tris-buffered saline, pH 7.3, 0.5% BSA, 0.02% sodium azide
<b>Recommended Storage:</b>	Store at -20°C. Minimize freezing and thawing.
<b>Uses:</b>	IHC - Paraffin (3.75 µg/ml), Western blot (0.1 - 0.3 µg/ml), ELISA (1:32000) (Optimal dilution to be determined by the researcher)
<b>Size:</b>	50 µg
<b>Concentration:</b>	0.5 mg/ml

**Immunohistochemistry Image:**



Anti-DPP10 antibody IHC of human brain, cerebellum. Immunohistochemistry of formalin-fixed, paraffin-embedded tissue after heat-induced antigen retrieval. Antibody LS-B4452 concentration 3.75 ug/ml.

**Immunohistochemistry Image:**



Anti-DPP10 antibody IHC of human brain, cortex. Immunohistochemistry of formalin-fixed, paraffin-embedded tissue after heat-induced antigen retrieval. Antibody LS-B4452 concentration 3.75 ug/ml.

**Western Blot Image:**



Antibody (0.1 ug/ml) staining of human bone marrow lysate (35 ug protein in RIPA buffer).  
Primary incubation was 1 hour. Detected by chemiluminescence.

**Requested From:**

Japan

Laboratory Reagent For In Vitro Research Use Only

Not for resale without prior written consent from LifeSpan BioSciences, Inc.

Created on 9/23/2014

© 2014 LifeSpan BioSciences