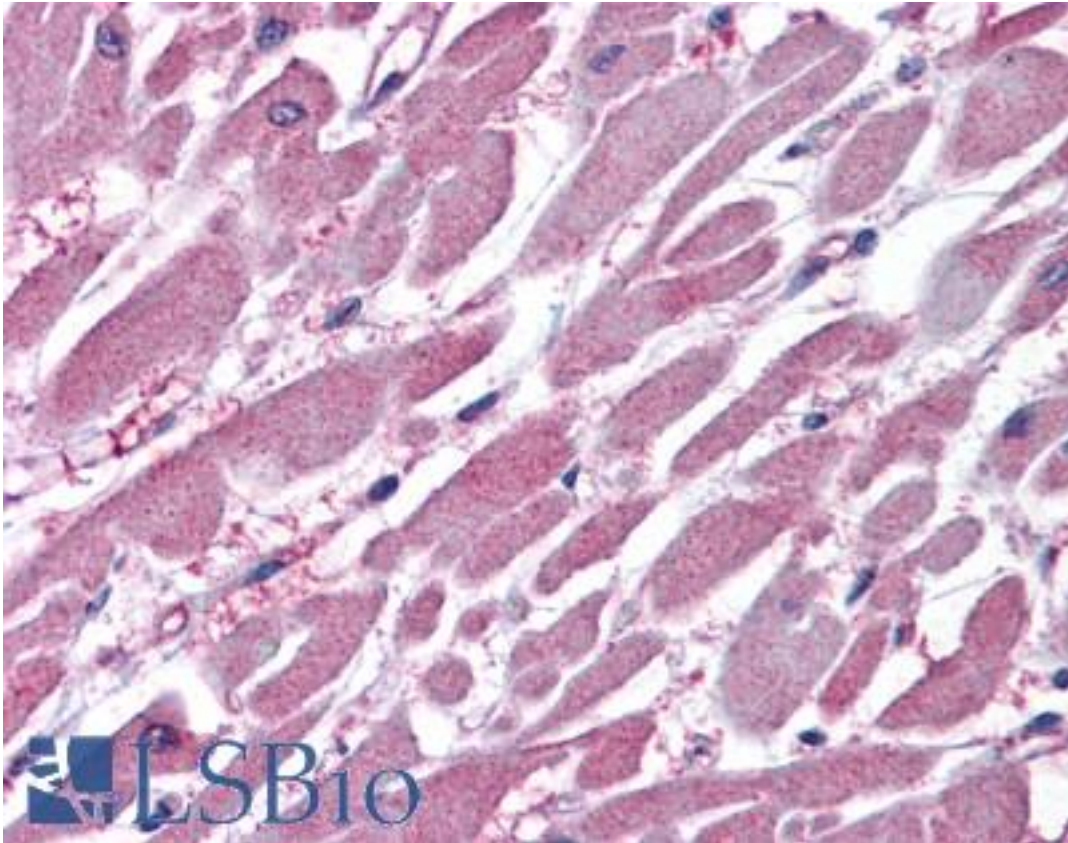


PPP2R1A Goat anti-Human Polyclonal (C-Terminus) Antibody - LS-B4451 - LSBio

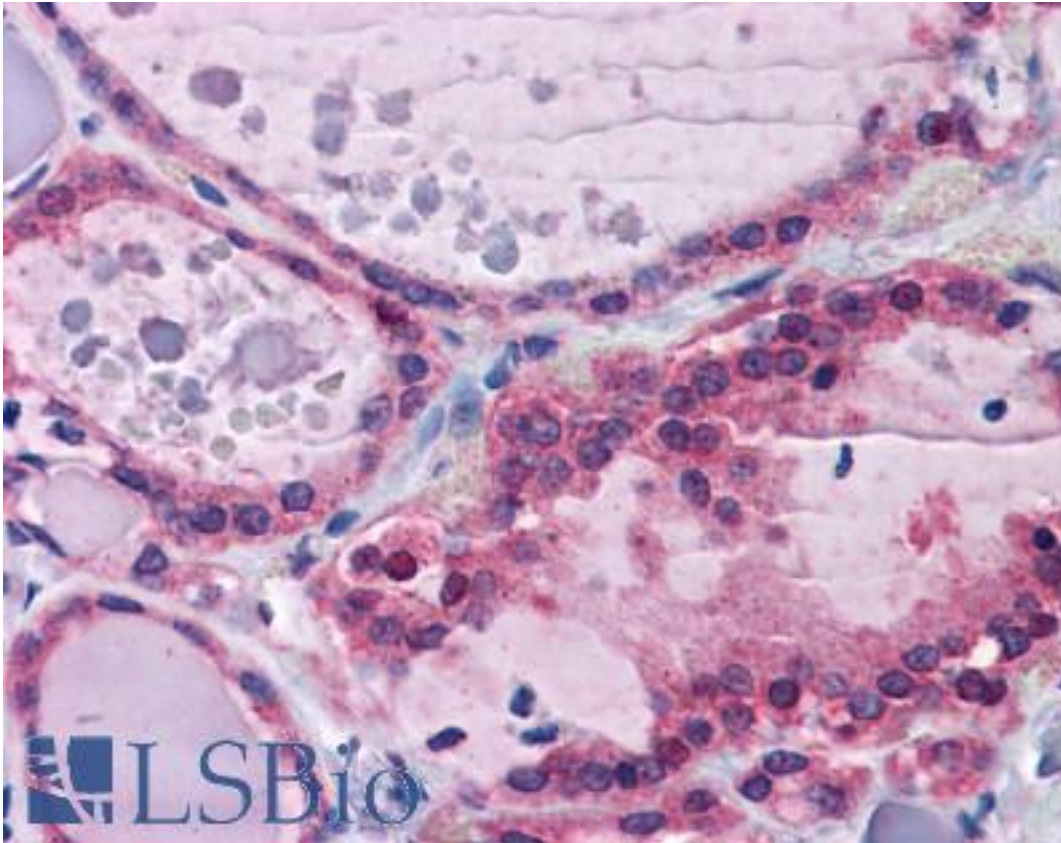
CatalogID:	LS-B4451
Validation:	This antibody replaces catalog number LS-C20196. It has been validated for use in the following assays: IHC-P.
Target:	protein phosphatase 2, regulatory subunit A, alpha (PPP2R1A)
Synonyms:	PPP2R1A Antibody, PP2A-Aalpha Antibody, PP2AAALPHA Antibody, PR65A Antibody
Host	PPP2R1A antibody was produced in Goat
Clonality:	Polyclonal
Immunogen Species:	PPP2R1A antibody was raised against Human
Antigen Type:	Synthetic peptide
Immunogen:	PPP2R1A antibody was raised against synthetic peptide C-KYFAQEALTVLSLA from the C-terminus of human PPP2R1A (NP_055040.2). Percent identity by BLAST analysis: Human, Gorilla, Orangutan, Gibbon, Monkey, Marmoset, Mouse, Rat, Hamster, Elephant, Bovine, Horse, Pig (100%); Xenopus (93%); Zebrafish (86%).
Specificity:	Human PPP2R1A.
Epitope:	C-Terminus
Reactivity:	Human, Gorilla, Orangutan, Gibbon, Monkey, Mouse, Rat, Bovine, Hamster, Horse, Pig
Predicted Reactivity:	Xenopus
Purification:	Immunoaffinity purified
Presentation:	Tris-buffered saline, pH 7.3, 0.5% BSA, 0.02% sodium azide
Recommended Storage:	Store at -20°C. Minimize freezing and thawing.
Uses:	IHC - Paraffin (3.75 µg/ml), Western blot (0.03 - 0.1 µg/ml), ELISA (1:8000) (Optimal dilution to be determined by the researcher)
Size:	50 µg
Concentration:	0.5 mg/ml

Immunohistochemistry Image:



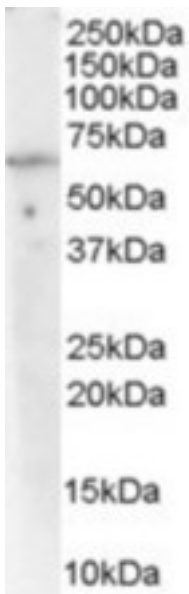
Anti-PPP2R1A antibody IHC of human heart. Immunohistochemistry of formalin-fixed, paraffin-embedded tissue after heat-induced antigen retrieval. Antibody LS-B4451 concentration 3.75 ug/ml.

Immunohistochemistry Image:



Anti-PPP2R1A antibody IHC of human thyroid. Immunohistochemistry of formalin-fixed, paraffin-embedded tissue after heat-induced antigen retrieval. Antibody LS-B4451 concentration 3.75 ug/ml.

Western Blot Image:



(0.03 ug/ml) Staining of Human Lymph Node lysate (35 ug protein in RIPA buffer). Primary incubation was 1 hour. Detected by chemiluminescence.

Requested From:	Japan
Laboratory Reagent For In Vitro Research Use Only	
Not for resale without prior written consent from LifeSpan BioSciences, Inc.	
Created on 9/23/2014	
© 2014 LifeSpan BioSciences	