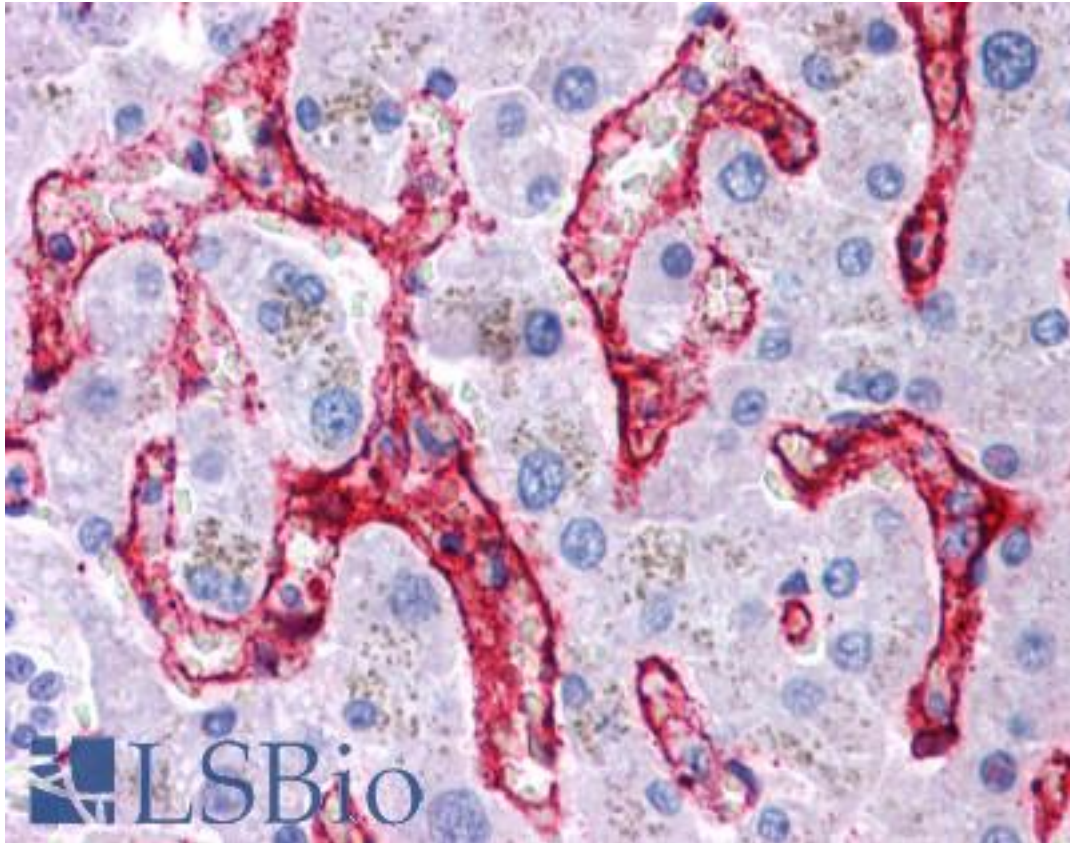


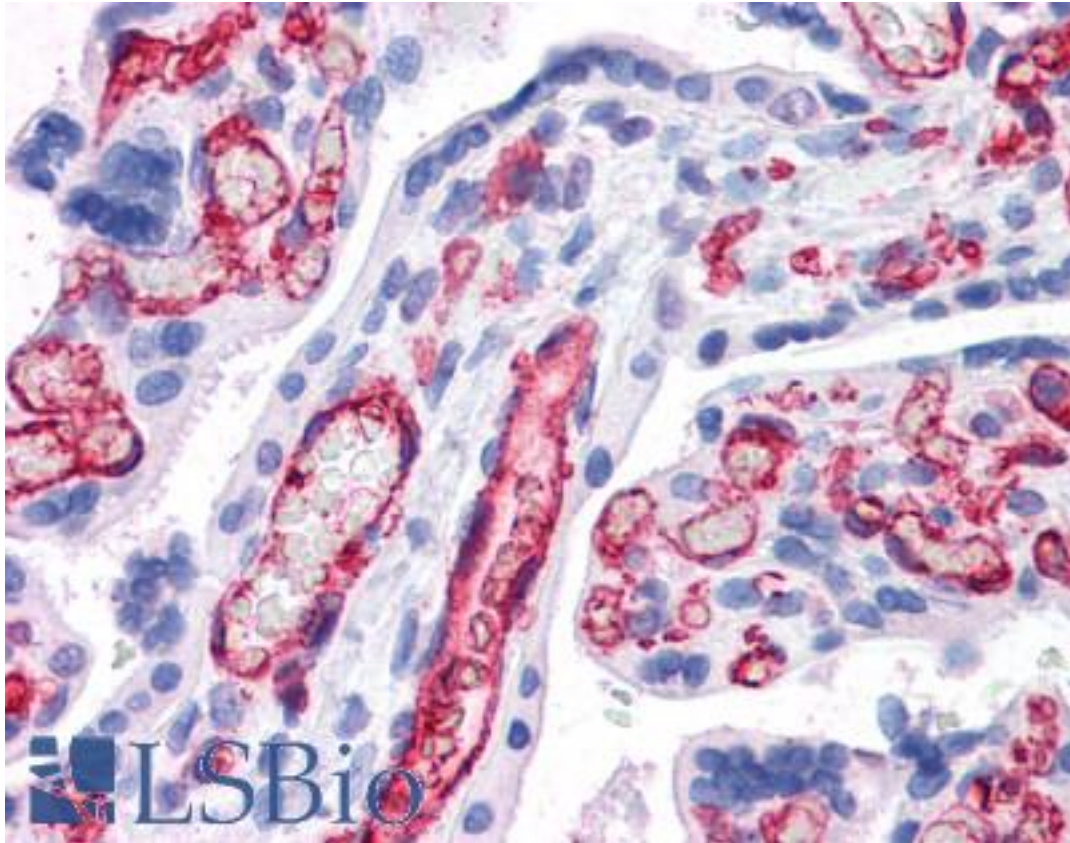
FCGR2B / CD32B Goat anti-Human Polyclonal (C-Terminus) Antibody - LS-B4450 - LSBio	
<b>CatalogID:</b>	LS-B4450
<b>Validation:</b>	This antibody replaces catalog number LS-C54631. It has been validated for use in the following assays: IHC-P.
<b>Target:</b>	Fc fragment of IgG, low affinity IIb, receptor (CD32) (FCGR2B)
<b>Synonyms:</b>	FCGR2B Antibody, CD32 Antibody, CD32 antigen Antibody, CD32B Antibody, CDw32 Antibody, FCG2 Antibody, FcRII-b Antibody, IgG Fc receptor II-b Antibody, Fc gamma RIIb Antibody, Fc-gamma RII-b Antibody, FCGR2 Antibody, Fc-gamma-RIIb Antibody, IGFR2 Antibody
<b>Family / Subfamily:</b>	Immunoglobulin / not assigned-Immunoglobulin
<b>Host</b>	FCGR2B antibody was produced in Goat
<b>Clonality:</b>	Polyclonal
<b>Immunogen Species:</b>	FCGR2B / CD32B antibody was raised against Human
<b>Antigen Type:</b>	Synthetic peptide
<b>Immunogen:</b>	FCGR2B / CD32B antibody was raised against synthetic peptide C-PDALEEPDDQNRI from the C-terminus of human FCGR2B / CD32B (NP_003992.3; NP_001002273.1; NP_001002274.1; NP_001002275.1; NP_001177757.1). Percent identity by BLAST analysis: Human, Gorilla, Gibbon (100%); Monkey (92%).
<b>Specificity:</b>	Human FCGR2B / CD32B. This antibody is expected to recognise all reported isoforms (NP_001002273.1; NP_001002274.1; NP_001002275.1; NP_003992.3; NP_001177757.1).
<b>Epitope:</b>	C-Terminus
<b>Reactivity:</b>	Human, Gorilla, Gibbon
<b>Predicted Reactivity:</b>	Monkey
<b>Purification:</b>	Immunoaffinity purified
<b>Presentation:</b>	Tris-buffered saline, pH 7.3, 0.5% BSA, 0.02% sodium azide
<b>Recommended Storage:</b>	Short term 4°C, long term aliquot and store at -20°C, avoid freeze thaw cycles.
<b>Uses:</b>	IHC - Paraffin (3.75 µg/ml), Western blot (0.3 - 1 µg/ml), ELISA (1:16000) (Optimal dilution to be determined by the researcher)
<b>Size:</b>	50 µg
<b>Concentration:</b>	0.5 mg/ml

**Immunohistochemistry Image:**



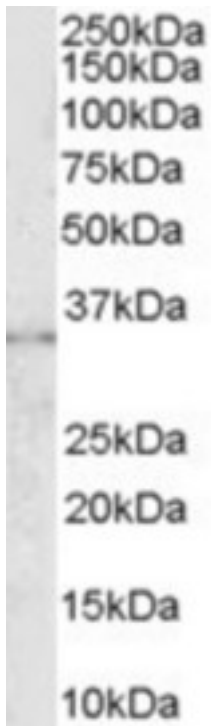
Anti-CD32B antibody IHC of human liver. Immunohistochemistry of formalin-fixed, paraffin-embedded tissue after heat-induced antigen retrieval. Antibody LS-B4450 concentration 3.75 ug/ml.

**Immunohistochemistry Image:**



Anti-CD32B antibody IHC of human placenta. Immunohistochemistry of formalin-fixed, paraffin-embedded tissue after heat-induced antigen retrieval. Antibody LS-B4450 concentration 3.75 ug/ml.

**Western Blot Image:**



Antibody (0.3 ug/ml) staining of K562 lysate (35 ug protein in RIPA buffer). Primary incubation was 1 hour. Detected by chemiluminescence.

**Requested From:**

Japan

Laboratory Reagent For In Vitro Research Use Only

Not for resale without prior written consent from LifeSpan BioSciences, Inc.

Created on 9/23/2014

© 2014 LifeSpan BioSciences