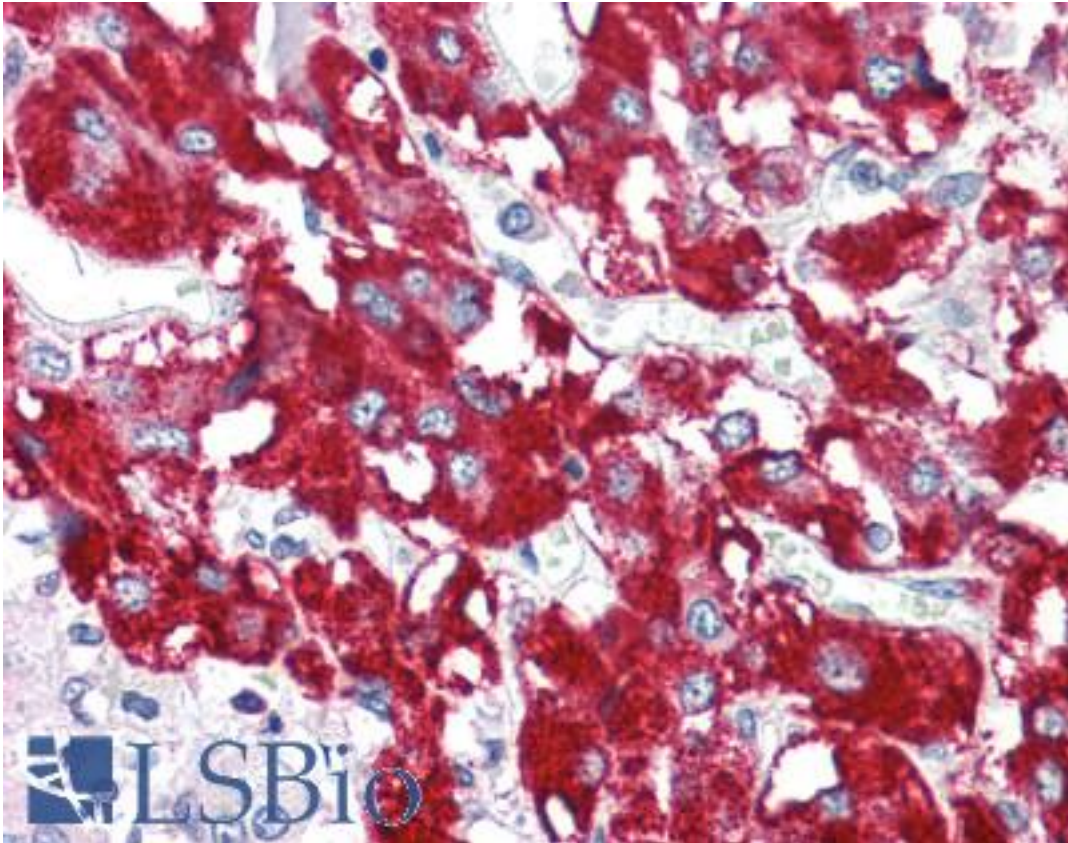


BAG1 / BAG-1 Rabbit anti-Human Polyclonal (N-Terminus) Antibody - LS-B445 - LSBio	
CatalogID:	LS-B445
Validation:	This antibody replaces catalog number LS-C19617. It has been validated for use in the following assays: IHC.
Target:	BCL2-associated athanogene (BAG1)
Synonyms:	BAG1 Antibody, Bcl-2-associated athanogene 1 Antibody, Bcl-2-binding protein Antibody, Bcl2 binding protein bag1 Antibody, BCL2-associated athanogene Antibody, BAG-1 Antibody, Bcl2 binding athanogene1 Antibody, HAP Antibody, RAP46 Antibody
Host	BAG1 antibody was produced in Rabbit
Clonality:	Polyclonal
Immunogen Species:	BAG1 / BAG-1 antibody was raised against Human
Antigen Type:	Synthetic peptide
Immunogen:	BAG1 / BAG-1 antibody was raised against synthetic peptide from human BAG1.
Specificity:	14 amino acid peptide from near the amino terminus of human BAG-1
Epitope:	N-Terminus
Reactivity:	Human, Mouse
Purification:	Immunoaffinity purified
Presentation:	PBS, 0.02% sodium azide.
Recommended Storage:	Short term 4°C, long term aliquot and store at -20°C, avoid freeze thaw cycles. Store undiluted.
Usage Summary:	Immunohistochemistry: LS-B445 was validated for use in immunohistochemistry on a panel of 21 formalin-fixed, paraffin-embedded (FFPE) human tissues after heat induced antigen retrieval in pH 6.0 citrate buffer. After incubation with the primary antibody, slides were incubated with biotinylated secondary antibody, followed by alkaline phosphatase-streptavidin and chromogen. The stained slides were evaluated by a pathologist to confirm staining specificity. The optimal working concentration for LS-B445 was determined to be 2.5 ug/ml.
Uses:	IHC - Paraffin (2.5 µg/ml), Western blot (Optimal dilution to be determined by the researcher)
Size:	50 µg
Concentration:	1 mg/ml

Immunohistochemistry Image:



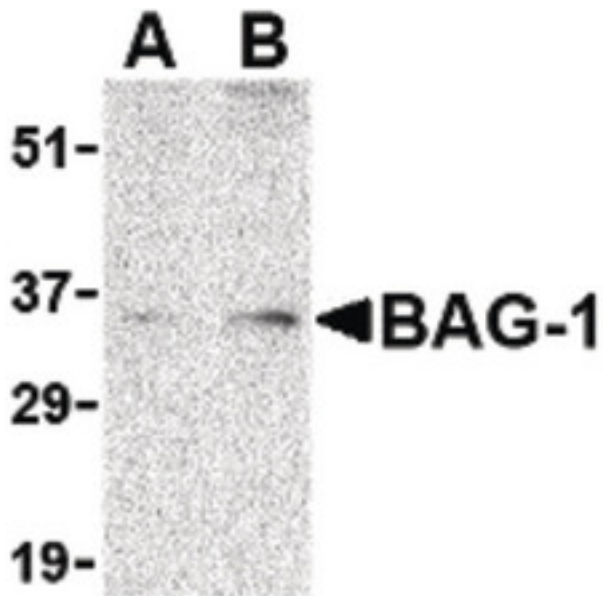
Anti-BAG1 antibody IHC of human adrenal. Immunohistochemistry of formalin-fixed, paraffin-embedded tissue after heat-induced antigen retrieval. Antibody LS-B445 concentration 5 ug/ml.

Immunofluorescence Image:



Immunofluorescence of BAG-1 in Human Lymph Node cells with BAG-1 antibody at 20 ug/ml.

Western Blot Image:



Western blot of BAG-1 in PC-3 cell lysate with BAG-1 antibody at (A) 1 and (B) 2 ug/ml.

Requested From:

Japan

Laboratory Reagent For In Vitro Research Use Only

Not for resale without prior written consent from LifeSpan BioSciences, Inc.

Created on 9/23/2014

© 2014 LifeSpan BioSciences