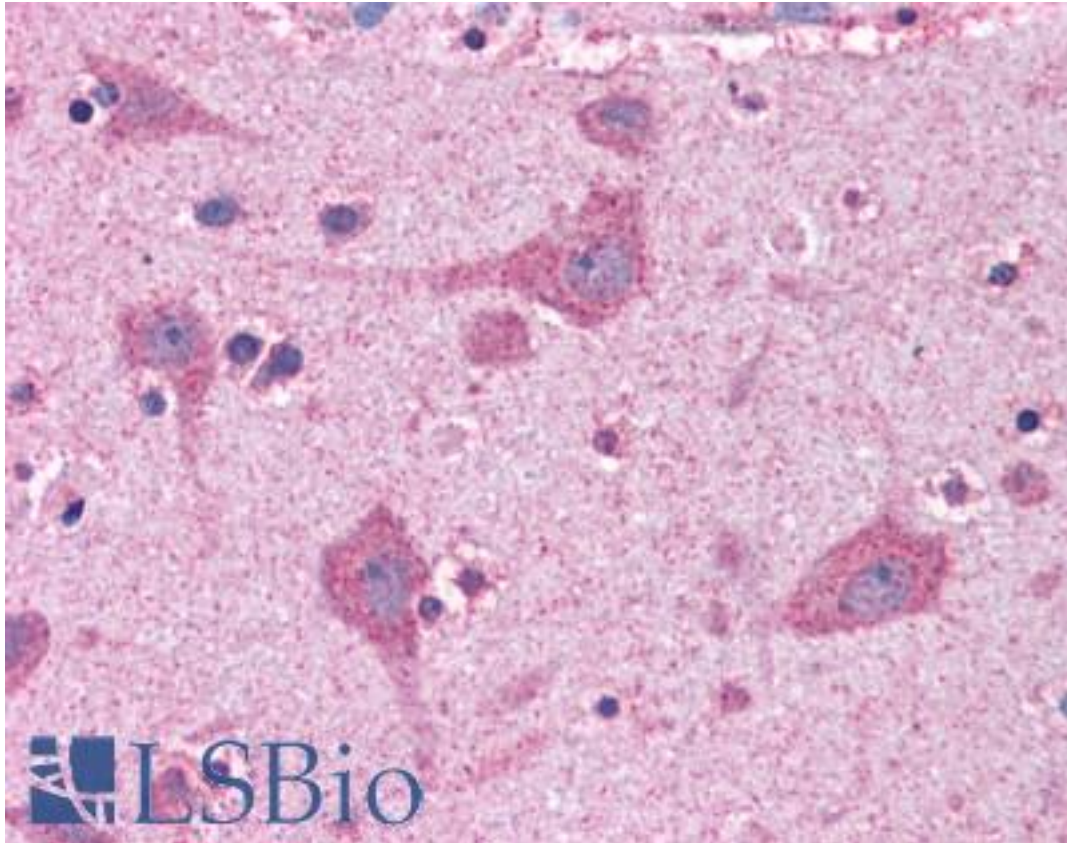


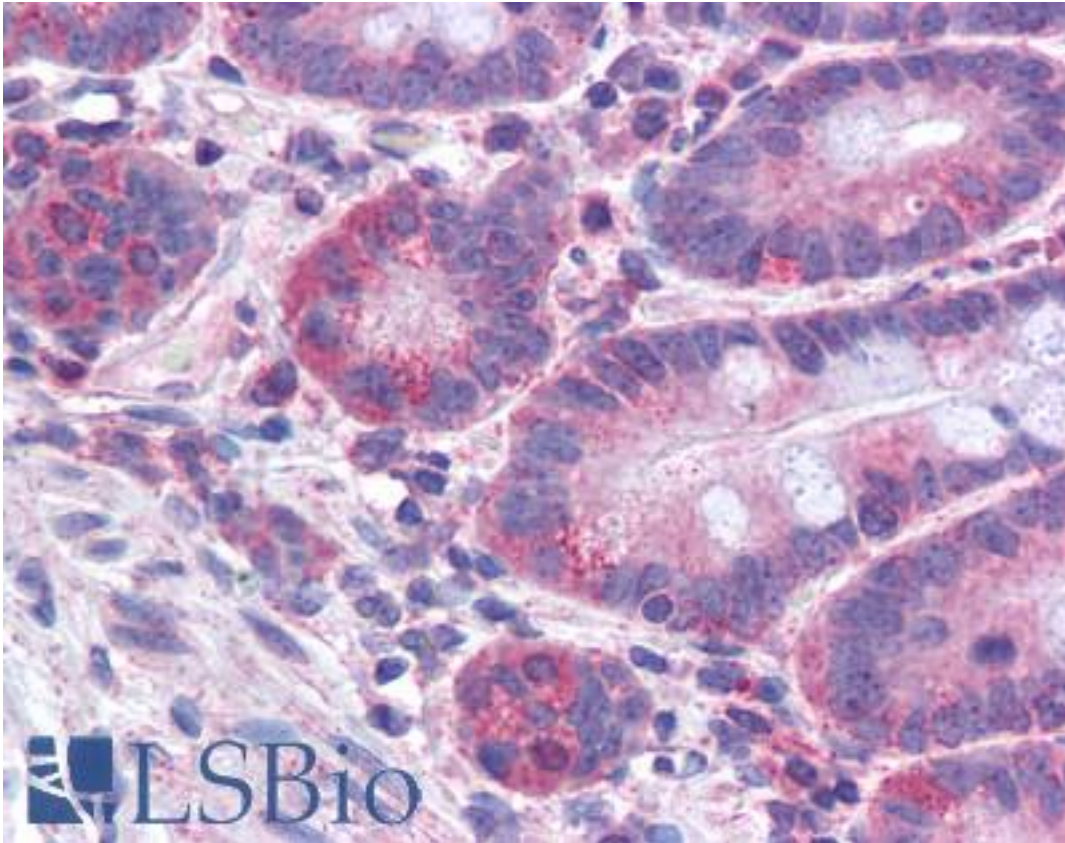
ACSL4 / FACL4 Goat anti-Human Polyclonal (C-Terminus) Antibody - LS-B4440 - LSBio	
<b>CatalogID:</b>	LS-B4440
<b>Validation:</b>	This antibody replaces catalog number LS-C54808. It has been validated for use in the following assays: IHC-P.
<b>Target:</b>	acyl-CoA synthetase long-chain family member 4 (ACSL4)
<b>Synonyms:</b>	ACSL4 Antibody, Acyl-CoA synthetase 4 Antibody, ACS4 Antibody, FACL4 Antibody, LACS4 Antibody, LACS 4 Antibody, Lignoceroyl-CoA synthase Antibody, MRX63 Antibody, MRX68 Antibody
<b>Host</b>	ACSL4 antibody was produced in Goat
<b>Clonality:</b>	Polyclonal
<b>Immunogen Species:</b>	ACSL4 / FACL4 antibody was raised against Human
<b>Antigen Type:</b>	Synthetic peptide
<b>Immunogen:</b>	ACSL4 / FACL4 antibody was raised against synthetic peptide C-HYLKDIERMYGGK from the C-terminus of human ACSL4 / FACL4 (NP_004449.1; NP_075266.1). Percent identity by BLAST analysis: Human, Gorilla, Gibbon, Monkey, Marmoset, Mouse, Rat, Hamster, Elephant, Panda, Bovine, Dog, Bat, Horse, Rabbit, Pig (100%); Opossum, Turkey, Chicken, Platypus, Pufferfish (92%); Xenopus, Stickleback, Zebrafish (85%).
<b>Specificity:</b>	Human ACSL4 / FACL4. This antibody is expected to recognise isoform 1 (NP_004449.1) and isoform 2 (NP_075266.1).
<b>Epitope:</b>	C-Terminus
<b>Reactivity:</b>	Human, Gorilla, Gibbon, Monkey, Mouse, Rat, Bat, Bovine, Dog, Hamster, Horse, Pig, Rabbit
<b>Predicted Reactivity:</b>	Chicken
<b>Purification:</b>	Immunoaffinity purified
<b>Presentation:</b>	Tris-buffered saline, pH 7.3, 0.5% BSA, 0.02% sodium azide
<b>Recommended Storage:</b>	Store at -20°C. Minimize freezing and thawing.
<b>Usage Summary:</b>	Peptide ELISA: antibody detection limit dilution 1:128000. Western blot: Approx 80 kDa band observed in lysates of cell line HepG2 (calculated MW of 79.2 kDa according to NP_075266.1). Recommended concentration: 0.1-0.3 ug/ml.
<b>Uses:</b>	IHC - Paraffin (3.75 µg/ml), Western blot (0.1 - 0.3 µg/ml), ELISA (1:128000) (Optimal dilution to be determined by the researcher)
<b>Size:</b>	50 µg
<b>Concentration:</b>	0.5 mg/ml

**Immunohistochemistry Image:**



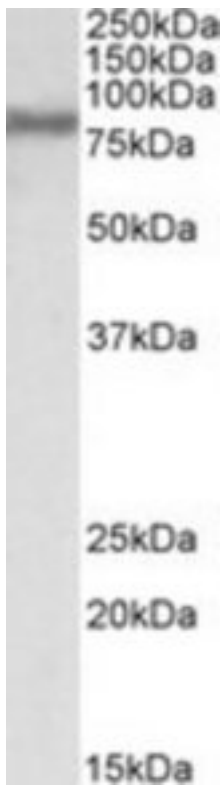
Anti-ACSL4 antibody IHC of human brain, cortex. Immunohistochemistry of formalin-fixed, paraffin-embedded tissue after heat-induced antigen retrieval. Antibody LS-B4440 concentration 3.75 ug/ml.

**Immunohistochemistry Image:**



Anti-ACSL4 antibody IHC of human small intestine. Immunohistochemistry of formalin-fixed, paraffin-embedded tissue after heat-induced antigen retrieval. Antibody LS-B4440 concentration 3.75 ug/ml.

**Western Blot Image:**



ACSL4 antibody (0.1 ug/ml) staining of HepG2 lysate (35 ug protein/ml in RIPA buffer).  
Primary incubation was 1 hour. Detected by chemiluminescence.

**Requested From:**

Japan

Laboratory Reagent For In Vitro Research Use Only

Not for resale without prior written consent from LifeSpan BioSciences, Inc.

Created on 9/23/2014

© 2014 LifeSpan BioSciences