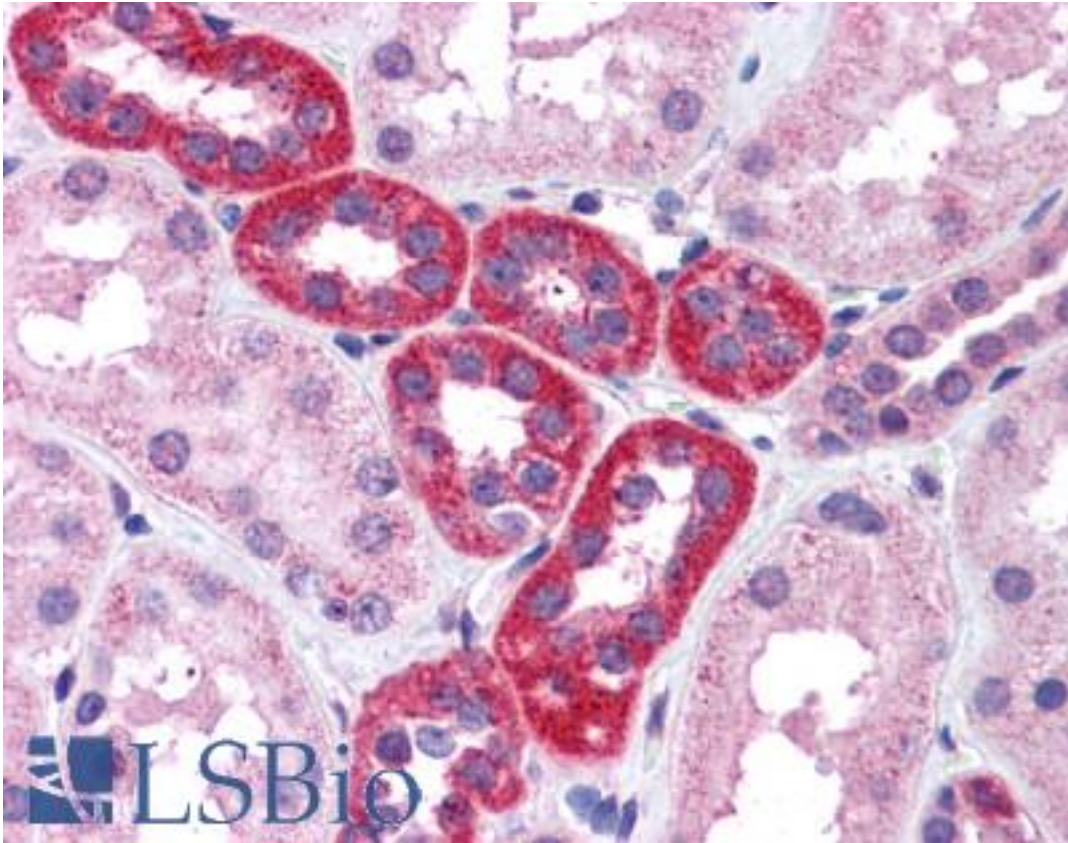


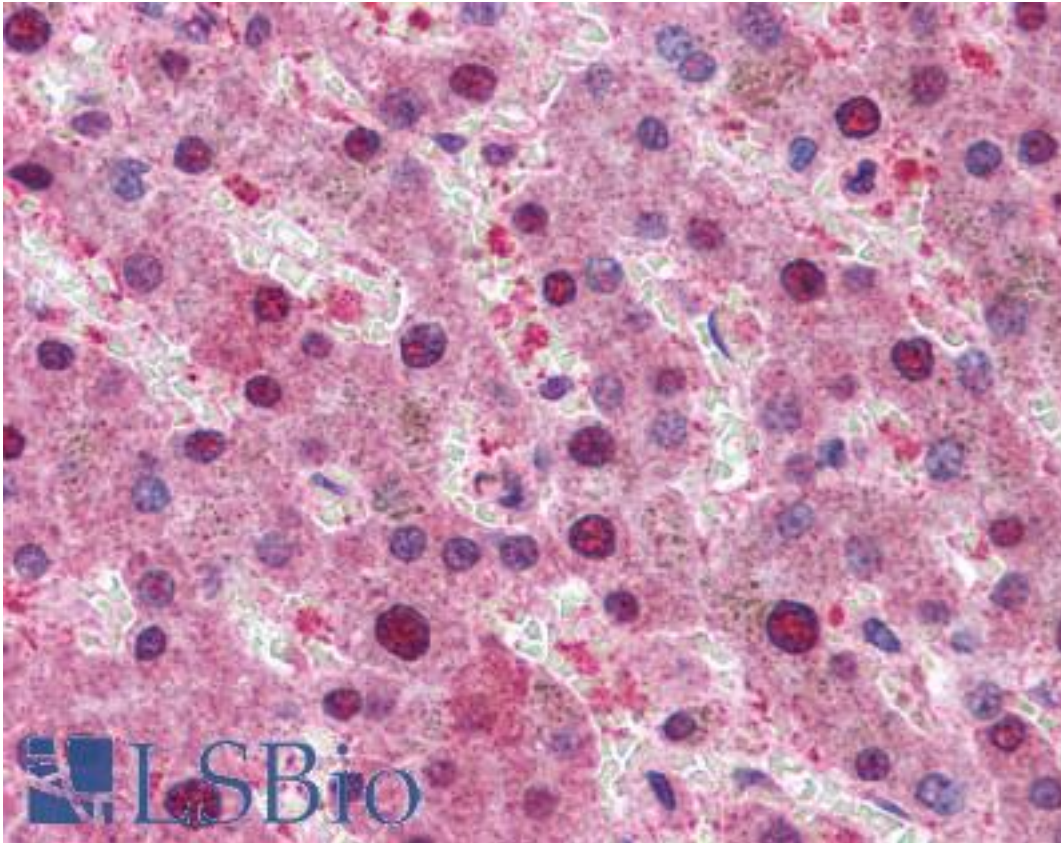
RPS6KB1 / P70S6K / S6K Goat anti-Human Polyclonal (C-Terminus) Antibody - LS-B4439 - LSBio	
CatalogID:	LS-B4439
Validation:	This antibody replaces catalog number LS-C34650. It has been validated for use in the following assays: IHC-P.
Target:	ribosomal protein S6 kinase, 70kDa, polypeptide 1 (RPS6KB1)
Synonyms:	RPS6KB1 Antibody, 70 kDa S6 kinase Antibody, p70 S6KA Antibody, p70-alpha Antibody, p70-S6K Antibody, p70 S6 kinase alpha Antibody, p70s6 kinase Antibody, S6K-beta-1 Antibody, STK14A Antibody, p70 ribosomal S6 kinase Antibody, p70 S6 kinase, alpha 1 Antibody, p70 S6 kinase, alpha 2 Antibody, p70 S6K-alpha Antibody, p70-S6K 1 Antibody, p70S6K Antibody, p70S6K1 Antibody, PS6K Antibody, Ribosomal protein S6 kinase I Antibody, S6K Antibody, S6K1 Antibody, p70 ribosomal S6 kinase alpha Antibody, p70(S6K)-alpha Antibody
Family / Subfamily:	Protein Kinase / P70 RSK
Host	RPS6KB1 antibody was produced in Goat
Clonality:	Polyclonal
Immunogen Species:	RPS6KB1 / P70S6K / S6K antibody was raised against Human
Antigen Type:	Synthetic peptide
Immunogen:	RPS6KB1 / P70S6K / S6K antibody was raised against synthetic peptide C-MISKRPEHLRMNL from the C-terminus of human RPS6KB1 / S6K (NP_003152.1). Percent identity by BLAST analysis: Human, Gorilla, Gibbon, Monkey, Marmoset, Mouse, Rat, Goat, Hamster, Elephant, Panda, Dog, Bat, Bovine, Horse, Rabbit, Pig, Opossum, Turkey, Chicken, Platypus, Xenopus (100%); Stickleback, Zebrafish (92%).
Specificity:	Human RPS6KB1 / S6K.
Epitope:	C-Terminus
Reactivity:	Human, Gorilla, Gibbon, Monkey, Mouse, Rat, Bat, Bovine, Dog, Goat, Hamster, Horse, Pig, Rabbit, Chicken, Xenopus
Predicted Reactivity:	Zebrafish
Purification:	Immunoaffinity purified
Presentation:	Tris-buffered saline, pH 7.3, 0.5% BSA, 0.02% sodium azide
Recommended Storage:	Store at -20°C. Minimize freezing and thawing.
Usage Summary:	Peptide ELISA: antibody detection limit dilution 1:128000. Western blot: Approx 65-70 kDa band observed in Human Skeletal Muscle and Placenta lysates (predicted MW of 60 kDa according to NP_003152.1). Recommended for use at 0.2-1 ug/ml.
Uses:	IHC - Paraffin (3.75 µg/ml), Western blot (0.2 - 1 µg/ml), ELISA (1:128000) (Optimal dilution to be determined by the researcher)
Size:	50 µg
Concentration:	0.5 mg/ml

Immunohistochemistry Image:



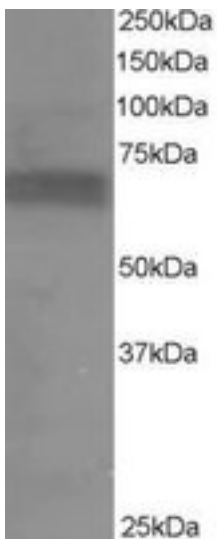
Anti-RPS6KB1 / S6K antibody IHC of human kidney. Immunohistochemistry of formalin-fixed, paraffin-embedded tissue after heat-induced antigen retrieval. Antibody LS-B4439 concentration 3.75 ug/ml.

Immunohistochemistry Image:



Anti-RPS6KB1 / S6K antibody IHC of human liver. Immunohistochemistry of formalin-fixed, paraffin-embedded tissue after heat-induced antigen retrieval. Antibody LS-B4439 concentration 3.75 ug/ml.

Western Blot Image:



RPS6KB1 antibody staining (0.2 ug/ml) of Human Muscle lysate (RIPA buffer, 35g total protein per lane). Primary incubated for 1 hour. Detected by Western blot of chemiluminescence.

Requested From:

Japan

Laboratory Reagent For In Vitro Research Use Only

Not for resale without prior written consent from LifeSpan BioSciences, Inc.

Created on 9/23/2014

© 2014 LifeSpan BioSciences