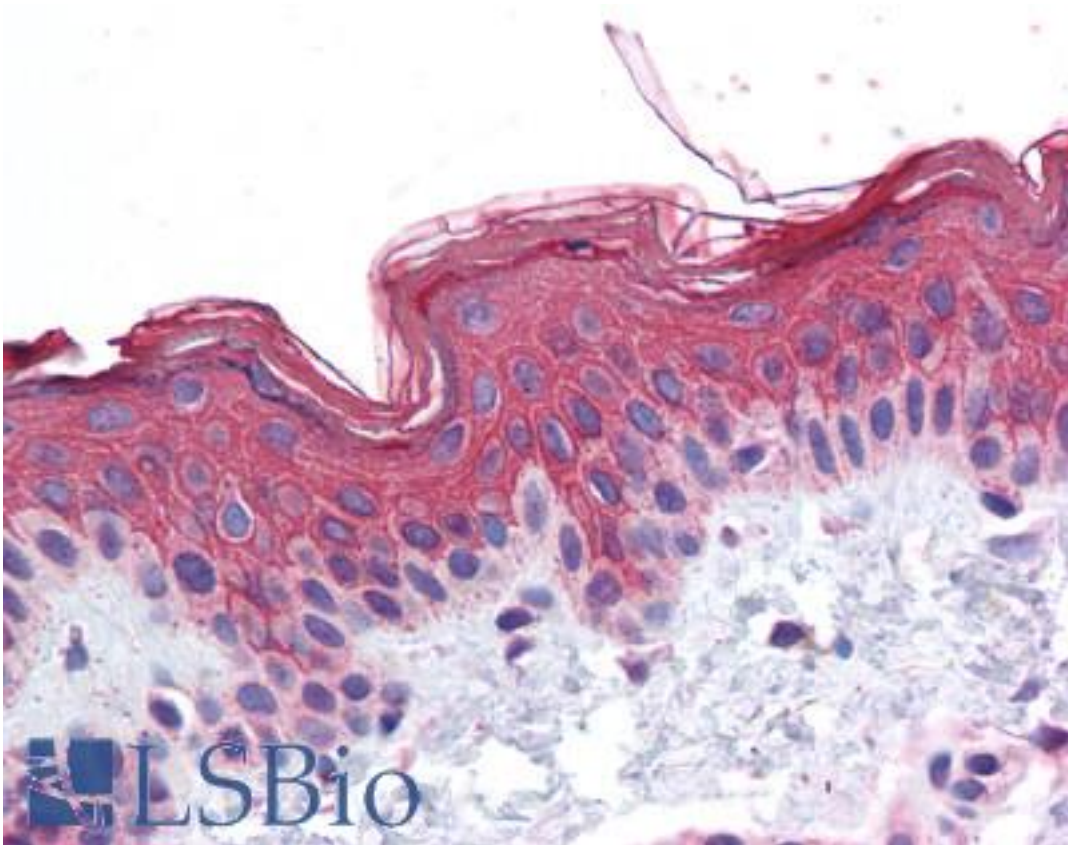


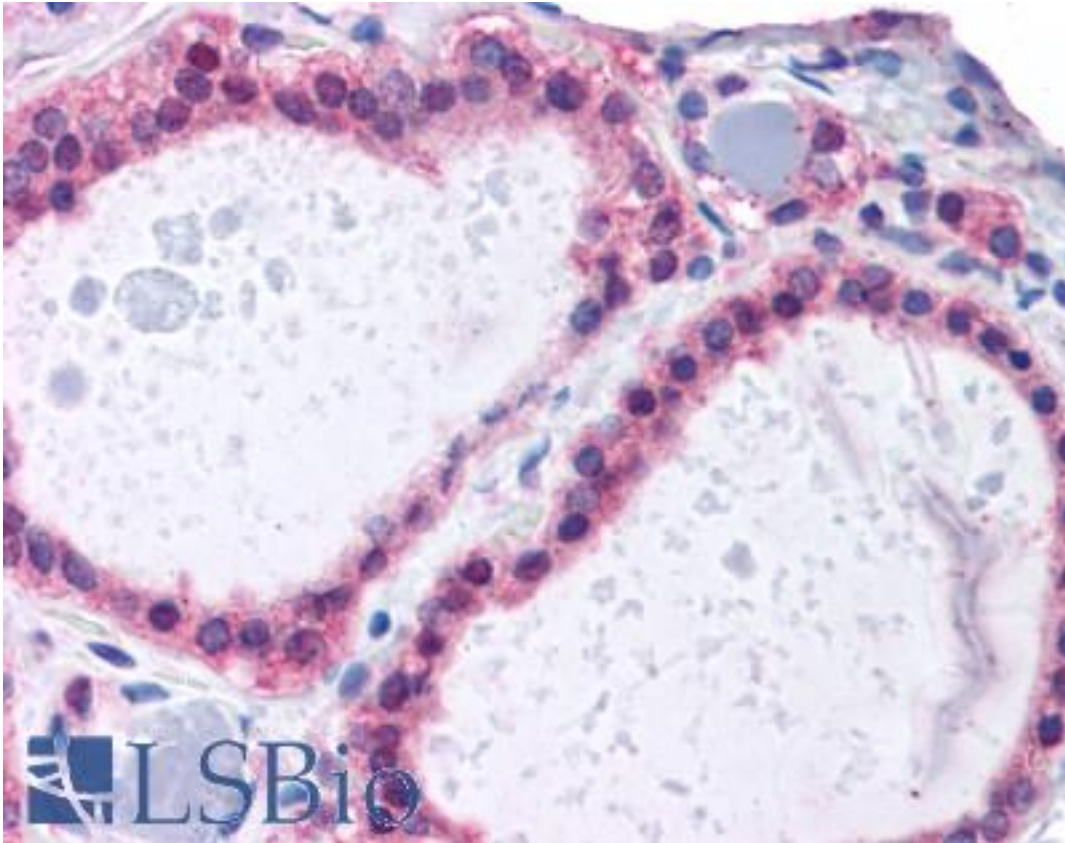
ADAM17 / TACE Goat anti-Human Polyclonal (C-Terminus) Antibody - LS-B4437 - LSBio	
CatalogID:	LS-B4437
Validation:	This antibody replaces catalog number LS-C11165. It has been validated for use in the following assays: IHC-P.
Target:	ADAM metallopeptidase domain 17 (ADAM17)
Synonyms:	ADAM17 Antibody, CD156B Antibody, CD156b antigen Antibody, CSVP Antibody, ADAM 17 Antibody, NISBD Antibody, TNF-alpha converting enzyme Antibody, TNF-alpha convertase Antibody, TNF-alpha-converting enzyme Antibody, Snake venom-like protease Antibody, TACE Antibody
Family / Subfamily:	Protease / Metallopeptidase M12B
Host	ADAM17 antibody was produced in Goat
Clonality:	Polyclonal
Immunogen Species:	ADAM17 / TACE antibody was raised against Human
Antigen Type:	Synthetic peptide
Immunogen:	ADAM17 / TACE antibody was raised against synthetic peptide LQRQNRVDSKETEC from the C-terminus of human ADAM17 (NP_003174.3). Percent identity by BLAST analysis: Human, Gorilla, Monkey, Marmoset, Elephant, Bat, Bovine, Turkey, Sparrow, Chicken, Platypus (100%); Gibbon, Mouse, Rat, Hamster, Panda, Dog, Horse, Pig, Opossum, Lizard, Xenopus (93%).
Specificity:	Human ADAM17. This antibody is expected to recognise isoform 1 (represented by NP_003174) and not isoform 2 (represented by NP_068604).
Epitope:	C-Terminus
Reactivity:	Human, Gorilla, Monkey, Bat, Bovine, Chicken
Predicted Reactivity:	Gibbon, Mouse, Rat, Dog, Hamster, Horse, Pig, Xenopus
Purification:	Immunoaffinity purified
Presentation:	Tris-buffered saline, pH 7.3, 0.5% BSA, 0.02% sodium azide
Recommended Storage:	Store at -20°C. Minimize freezing and thawing.
Uses:	IHC - Paraffin (3.75 µg/ml), Western blot (0.1 - 0.3 µg/ml), ELISA (1:128000) (Optimal dilution to be determined by the researcher)
Size:	50 µg
Concentration:	0.5 mg/ml

Immunohistochemistry Image:



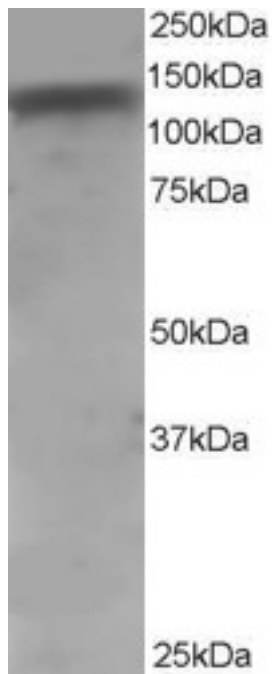
Anti-ADAM17 antibody IHC of human skin. Immunohistochemistry of formalin-fixed, paraffin-embedded tissue after heat-induced antigen retrieval. Antibody LS-B4437 concentration 3.75 ug/ml.

Immunohistochemistry Image:



Anti-ADAM17 antibody IHC of human thyroid. Immunohistochemistry of formalin-fixed, paraffin-embedded tissue after heat-induced antigen retrieval. Antibody LS-B4437 concentration 3.75 ug/ml.

Western Blot Image:



HeLa lysate (RIPA buffer, 35 ug total protein per lane). Primary incubated for 1 hour.
Detected by Western blot of chemiluminescence.

Requested From:

Japan

Laboratory Reagent For In Vitro Research Use Only

Not for resale without prior written consent from LifeSpan BioSciences, Inc.

Created on 9/23/2014

© 2014 LifeSpan BioSciences