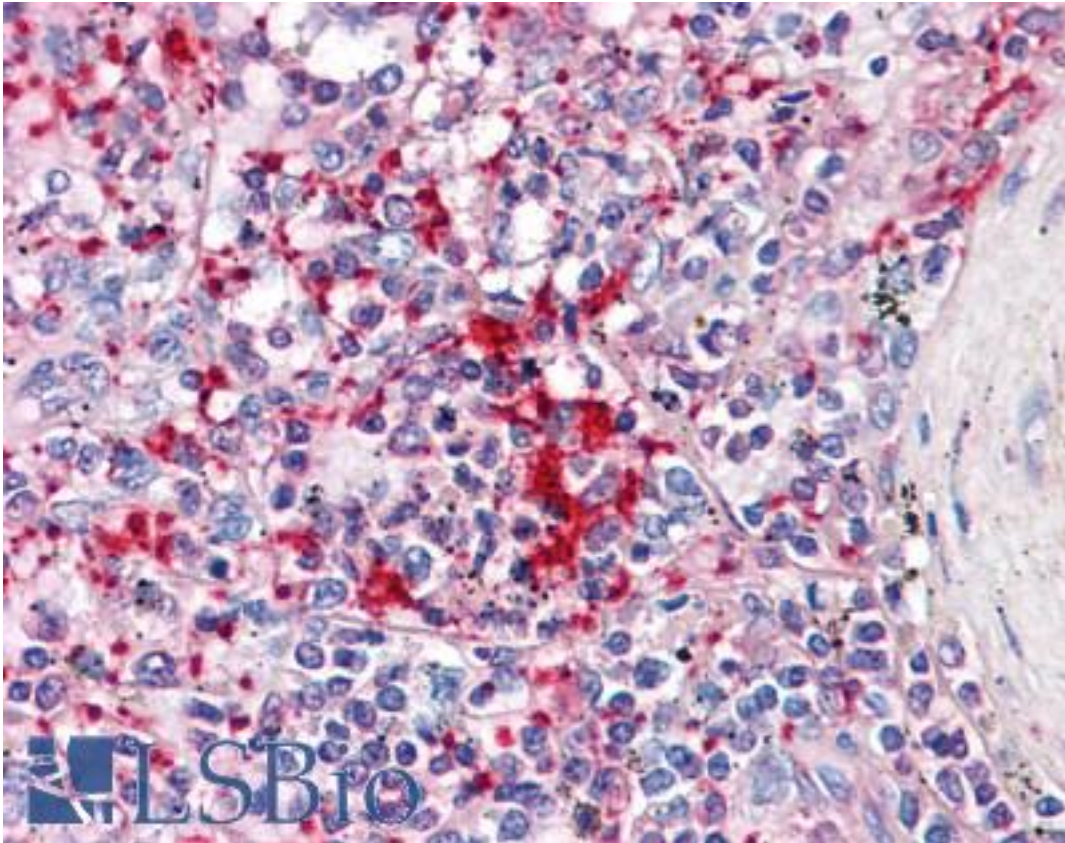


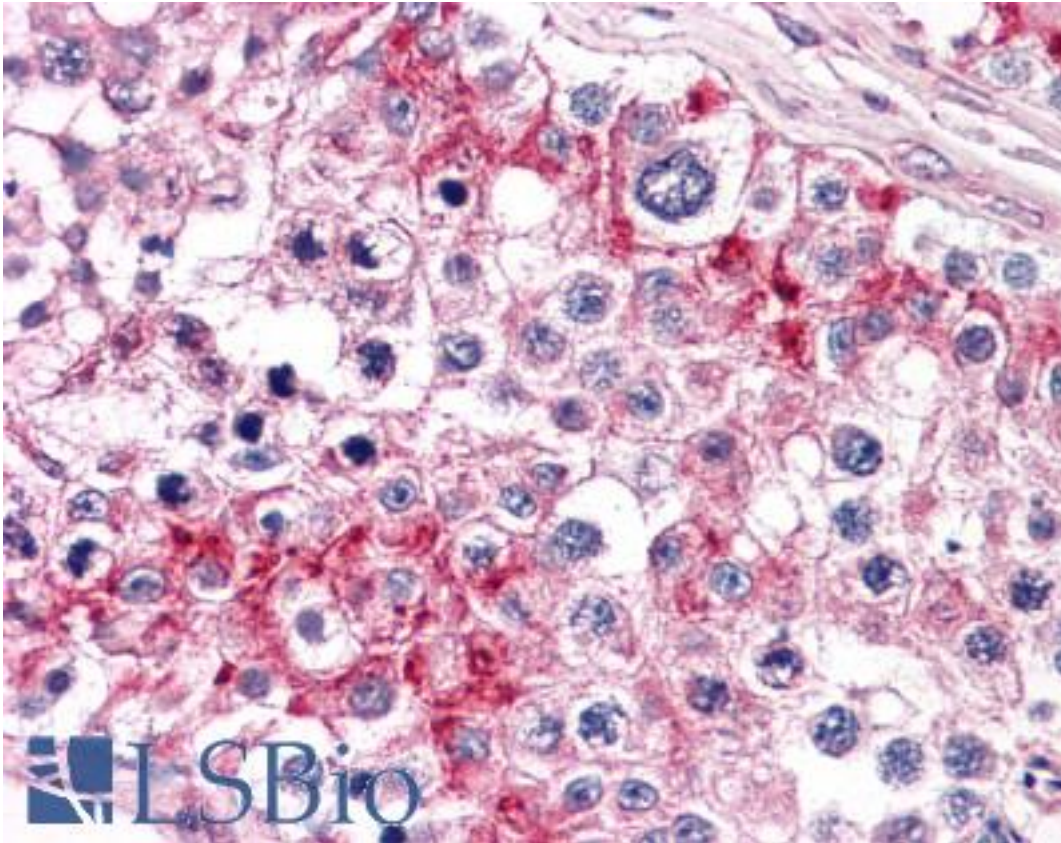
TLN1 / Talin Mouse anti-Human Monoclonal (5C1) Antibody - LS-B4430 - LSBio	
<b>CatalogID:</b>	LS-B4430
<b>Validation:</b>	This antibody replaces catalog number LS-C105041. It has been validated for use in the following assays: IHC-P.
<b>Target:</b>	talin 1 (TLN1)
<b>Synonyms:</b>	TLN1 Antibody, KIAA1027 Antibody, TLN Antibody, Talin-1 Antibody, ILWEQ Antibody, Talin Antibody, Talin 1 Antibody
<b>Host</b>	TLN1 antibody was produced in Mouse
<b>Clonality:</b>	Monoclonal
<b>Isotype:</b>	IgG3,k
<b>Clone Name:</b>	5C1
<b>Immunogen Species:</b>	TLN1 / Talin antibody was raised against Human
<b>Antigen Type:</b>	Recombinant protein
<b>Immunogen:</b>	TLN1 / Talin antibody was raised against tLN1 (NP_006280, 1052 a.a. ~ 1150 a.a) partial recombinant protein with GST tag. MW of the GST tag alone is 26 KDa.
<b>Reactivity:</b>	Human, Mouse, Rat
<b>Purification:</b>	Protein A purified
<b>Presentation:</b>	PBS, pH 7.2
<b>Recommended Storage:</b>	Store at -20°C. Aliquot to avoid freeze/thaw cycles.
<b>Usage Summary:</b>	Western Blot (Cell lysate) - positive control PC-12. Western Blot (Cell lysate) - positive control Raw 264. Sandwich ELISA (Recombinant protein).
<b>Uses:</b>	IHC - Paraffin (5 µg/ml), Western blot, ELISA (Optimal dilution to be determined by the researcher)
<b>Size:</b>	50 µg

**Immunohistochemistry Image:**



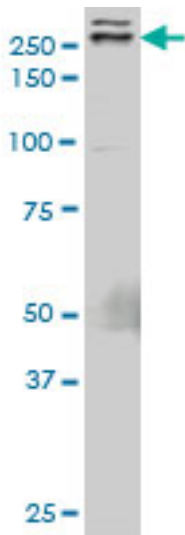
Anti-TLN1 / Talin antibody IHC of human spleen. Immunohistochemistry of formalin-fixed, paraffin-embedded tissue after heat-induced antigen retrieval. Antibody LS-B4430 concentration 5 ug/ml.

**Immunohistochemistry Image:**



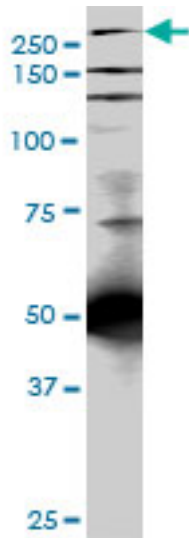
Anti-TLN1 / Talin antibody IHC of human testis. Immunohistochemistry of formalin-fixed, paraffin-embedded tissue after heat-induced antigen retrieval. Antibody LS-B4430 concentration 5 ug/ml.

**Western Blot Image:**



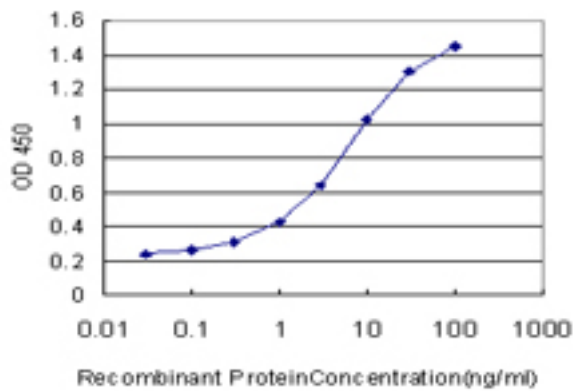
TLN1 monoclonal antibody clone 5C1. Western blot of TLN1 expression in Raw 264.7.

**Western Blot Image:**



TLN1 monoclonal antibody clone 5C1. Western blot of TLN1 expression in PC-12.

**ELISA Image:**



Detection limit for recombinant GST tagged TLN1 is approximately 0.03 ng/ml as a capture antibody.

**Requested From:**

Japan

Laboratory Reagent For In Vitro Research Use Only

Not for resale without prior written consent from LifeSpan BioSciences, Inc.

Created on 9/23/2014

© 2014 LifeSpan BioSciences