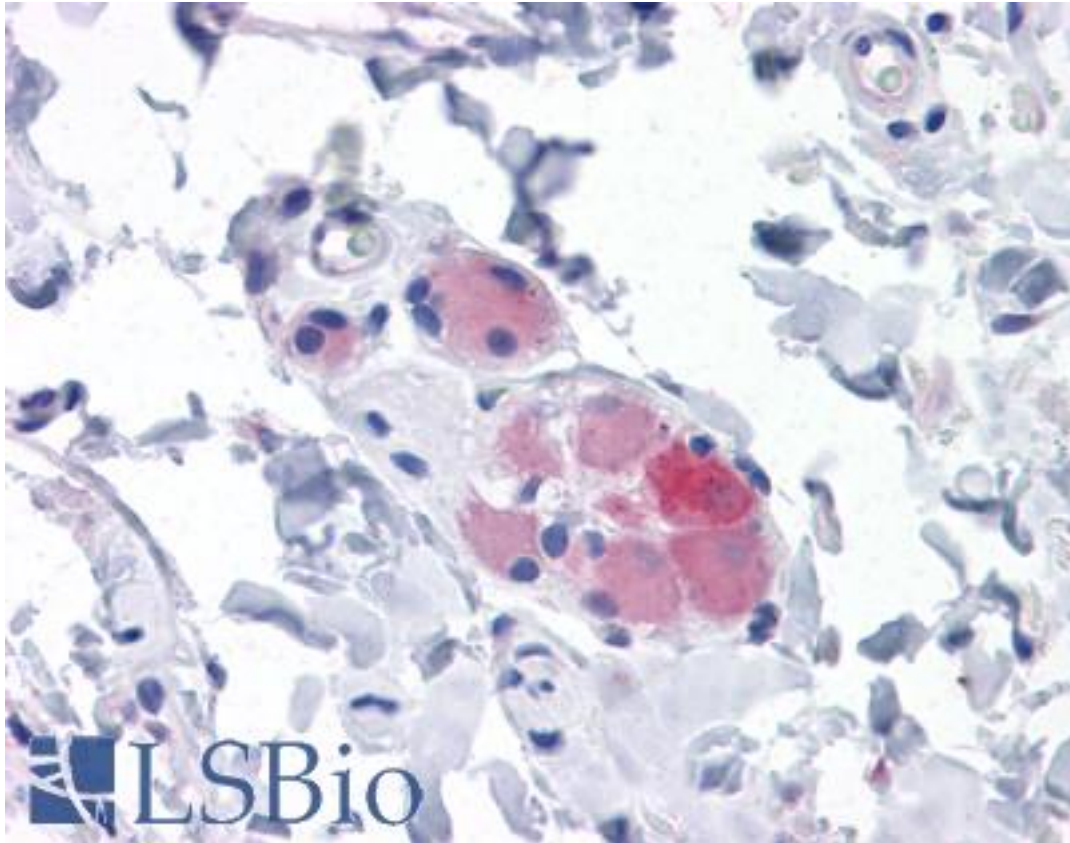


GOK / STIM1 Mouse anti-Human Monoclonal (5A2) Antibody - LS-B4424 - LSBio

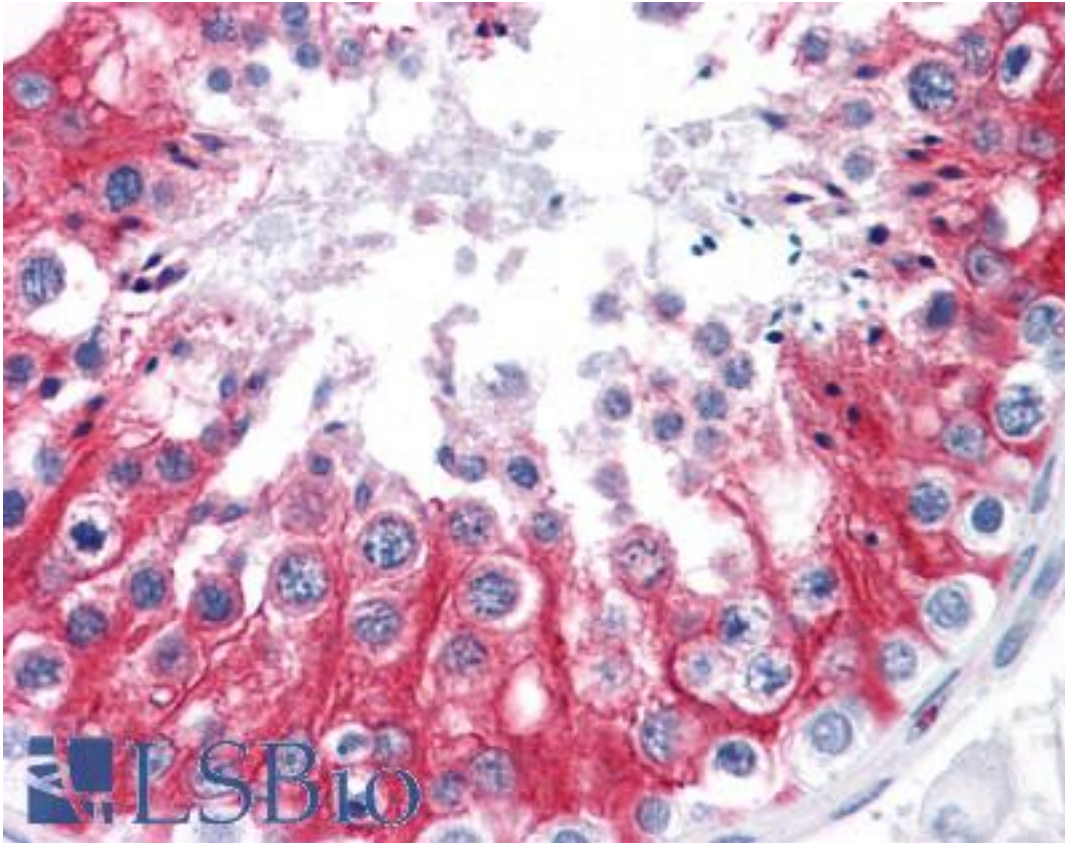
CatalogID:	LS-B4424
Validation:	This antibody replaces catalog number LS-C105034. It has been validated for use in the following assays: IHC-P.
Target:	stromal interaction molecule 1 (STIM1)
Synonyms:	STIM1 Antibody, D11S4896E Antibody, Stromal interaction molecule 1 Antibody, GOK Antibody, STIM1L Antibody
Host	STIM1 antibody was produced in Mouse
Clonality:	Monoclonal
Isotype:	IgG2a,k
Clone Name:	5A2
Immunogen Species:	GOK / STIM1 antibody was raised against Human
Antigen Type:	Recombinant protein
Immunogen:	GOK / STIM1 antibody was raised against sTIM1 (AAH21300, 24 a.a. ~ 686 a.a) full length recombinant protein with GST tag. MW of the GST tag alone is 26 KDa.
Reactivity:	Human
Purification:	Protein A purified
Presentation:	PBS, pH 7.2. Sourced in Ascites.
Recommended Storage:	Store at -20°C. Aliquot to avoid freeze/thaw cycles.
Usage Summary:	Western Blot (Tissue lysate) - positive control human liver. Immunofluorescence (10 ug/ml) - positive control HeLa cells. Sandwich ELISA (Recombinant protein).
Uses:	IHC - Paraffin (5 µg/ml), Immunofluorescence (10 µg/ml), Western blot (1:500 - 1:1000), ELISA (Optimal dilution to be determined by the researcher)
Size:	50 µg
Concentration:	0.5 mg/ml

Immunohistochemistry Image:



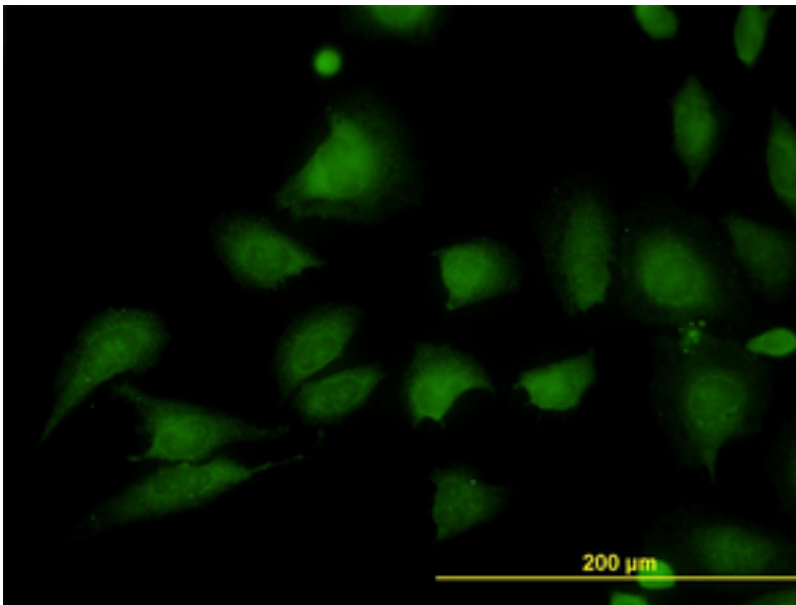
Anti-STIM1 antibody IHC of human small intestine, submucosal plexus. Immunohistochemistry of formalin-fixed, paraffin-embedded tissue after heat-induced antigen retrieval. Antibody LS-B4424 concentration 5 ug/ml.

Immunohistochemistry Image:



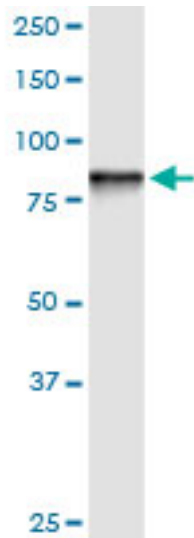
Anti-STIM1 antibody IHC of human testis. Immunohistochemistry of formalin-fixed, paraffin-embedded tissue after heat-induced antigen retrieval. Antibody LS-B4424 concentration 5 ug/ml.

Immunofluorescence Image:



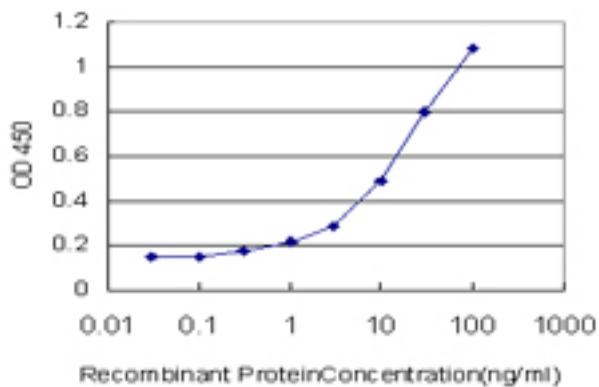
Immunofluorescence of monoclonal antibody to STIM1 on HeLa cell (antibody concentration 10 ug/ml).

Western Blot Image:



STIM1 monoclonal antibody clone 5A2. Western blot of STIM1 expression in human liver.

ELISA Image:



Detection limit for recombinant GST tagged STIM1 is approximately 0.3 ng/ml as a capture antibody.

Requested From:

Japan

Laboratory Reagent For In Vitro Research Use Only

Not for resale without prior written consent from LifeSpan BioSciences, Inc.

Created on 9/23/2014

© 2014 LifeSpan BioSciences