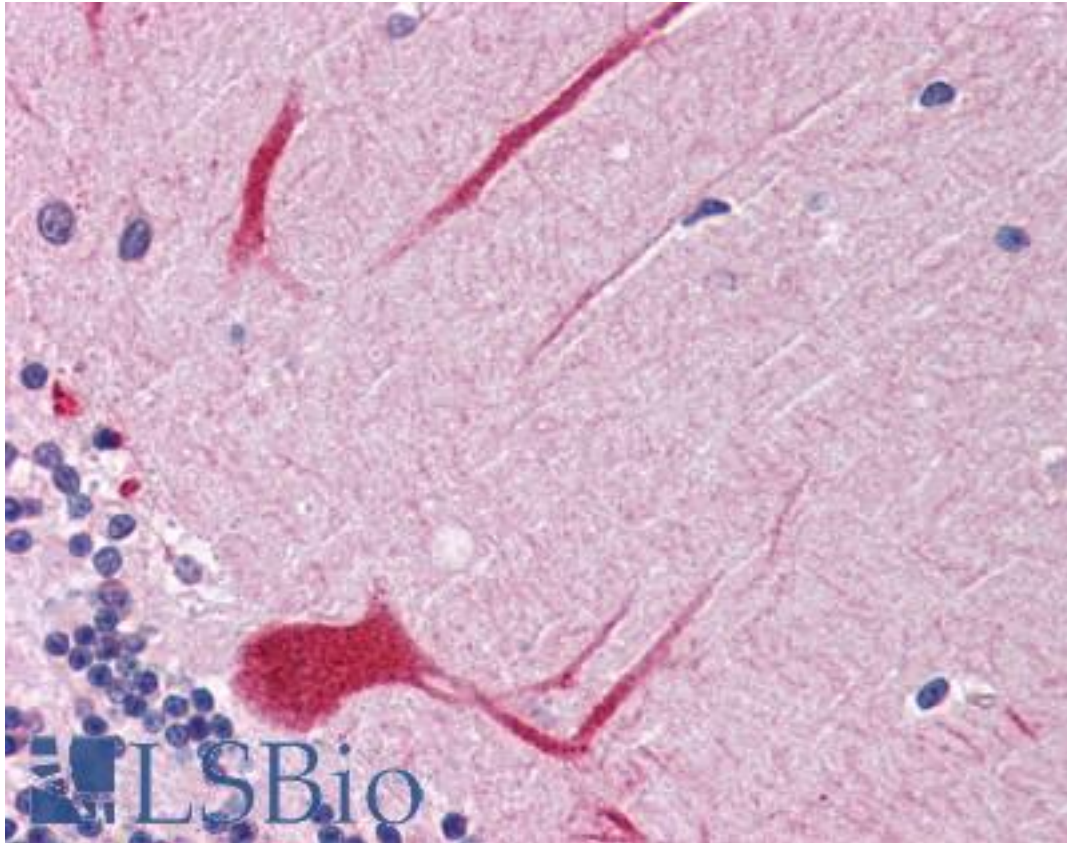


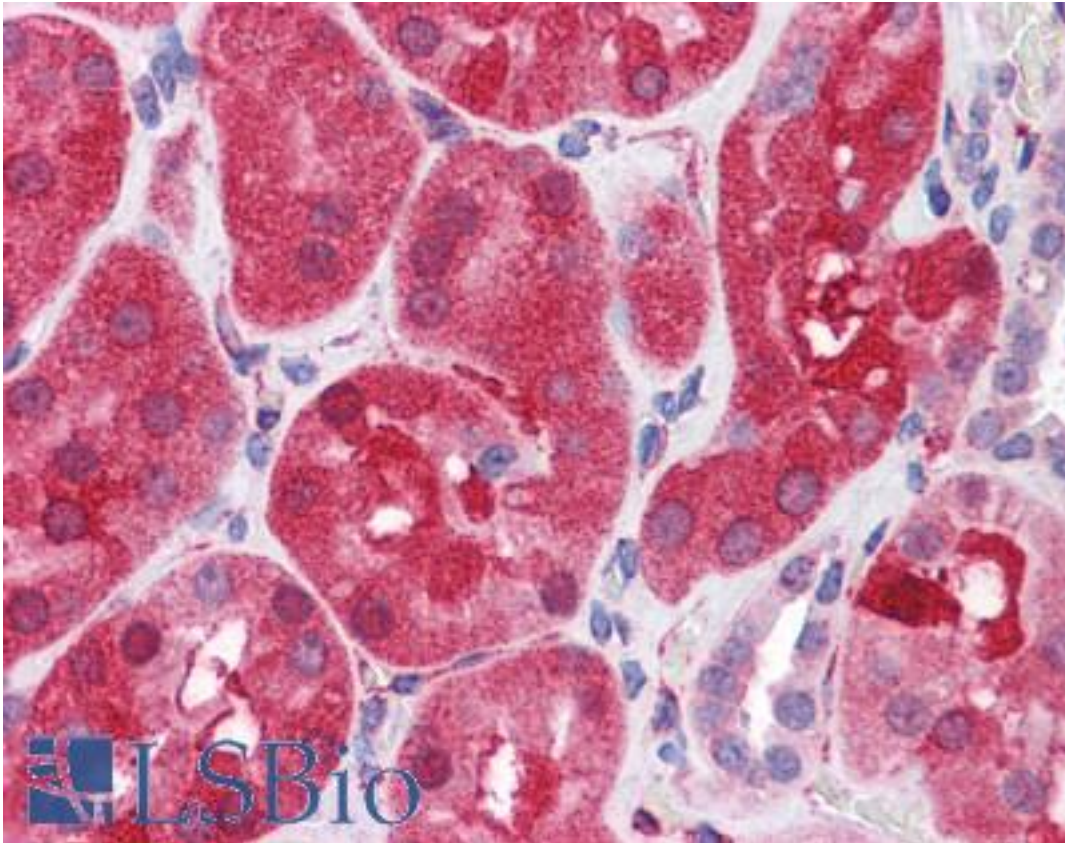
PTPN11 / SHP-2 / NS1 Goat anti-Human Polyclonal (C-Terminus) Antibody - LS-B4418 - LSBio	
CatalogID:	LS-B4418
Validation:	This antibody replaces catalog number LS-C55464. It has been validated for use in the following assays: IHC-P.
Target:	protein tyrosine phosphatase, non-receptor type 11 (PTPN11)
Synonyms:	PTPN11 Antibody, Bptp-3 Antibody, BPTP3 Antibody, CFC Antibody, Csw Antibody, Corkscrew csw Antibody, Gene corkscrew Antibody, Phosphatase corkscrew Antibody, PTP-2C Antibody, SHP2 Antibody, PTP-1D Antibody, PTP2C Antibody, SHP-2 Antibody, SHPTP2 Antibody, Noonan syndrome 1 Antibody, SH-PTP2 Antibody, SH-PTP3 Antibody
Family / Subfamily:	Protein Phosphatase / NT2
Host	PTPN11 antibody was produced in Goat
Clonality:	Polyclonal
Immunogen Species:	PTPN11 / SHP-2 / NS1 antibody was raised against Human
Antigen Type:	Synthetic peptide
Immunogen:	PTPN11 / SHP-2 / NS1 antibody was raised against synthetic peptide C-YENVGLMQQQKSFR from the C-terminus of human PTPN11 (NP_002825.3). Percent identity by BLAST analysis: Human, Gorilla, Gibbon, Monkey, Marmoset, Elephant, Bovine, Bat, Horse, Rabbit, Chicken, Platypus, Xenopus, Stickleback (100%); Mouse, Rat, Hamster, Opossum, Zebrafish (93%).
Specificity:	Human PTPN11.
Epitope:	C-Terminus
Reactivity:	Human, Gorilla, Gibbon, Monkey, Bat, Bovine, Horse, Rabbit, Chicken, Xenopus
Predicted Reactivity:	Mouse, Rat, Hamster, Zebrafish
Purification:	Immunoaffinity purified
Presentation:	Tris-buffered saline, pH 7.3, 0.5% BSA, 0.02% sodium azide
Recommended Storage:	Store at -20°C. Minimize freezing and thawing.
Uses:	IHC - Paraffin (3.75 µg/ml), Western blot (1 - 3 µg/ml), ELISA (1:32000) (Optimal dilution to be determined by the researcher)
Size:	50 µg
Concentration:	0.5 mg/ml

Immunohistochemistry Image:



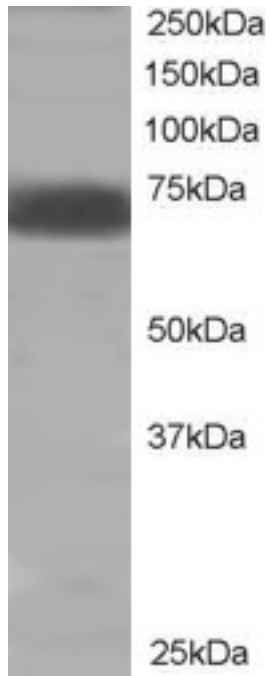
Anti-PTPN11 antibody IHC of human brain, cerebellum. Immunohistochemistry of formalin-fixed, paraffin-embedded tissue after heat-induced antigen retrieval. Antibody LS-B4418 concentration 3.75 ug/ml.

Immunohistochemistry Image:



Anti-PTPN11 antibody IHC of human kidney. Immunohistochemistry of formalin-fixed, paraffin-embedded tissue after heat-induced antigen retrieval. Antibody LS-B4418 concentration 3.75 ug/ml.

Western Blot Image:



Antibody staining (2 ug/ml) of human muscle lysate (RIPA buffer, 35 ug total protein per lane). Primary incubated for 1 hour. Detected by Western blot of chemiluminescence.

Requested From:

Japan

Laboratory Reagent For In Vitro Research Use Only

Not for resale without prior written consent from LifeSpan BioSciences, Inc.

Created on 9/23/2014

© 2014 LifeSpan BioSciences