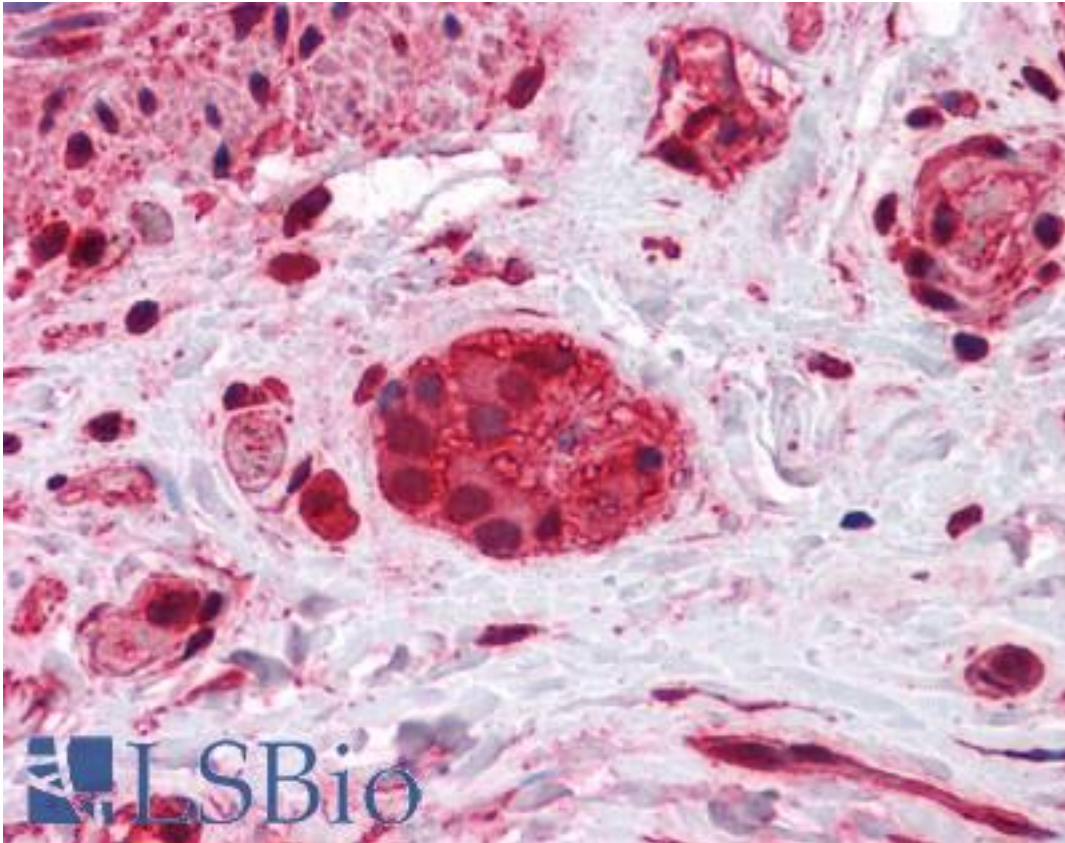


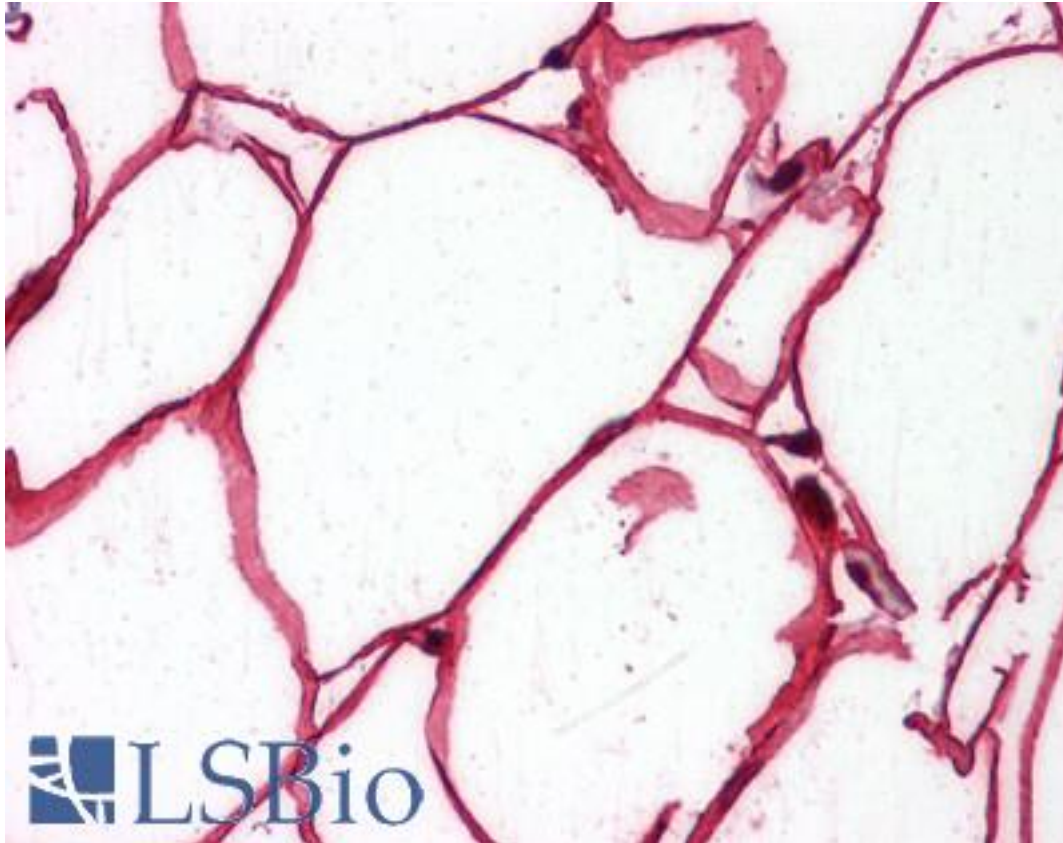
p66 / SHC Mouse anti-Human Monoclonal (3F4) Antibody - LS-B4416 - LSBio	
<b>CatalogID:</b>	LS-B4416
<b>Validation:</b>	This antibody replaces catalog number LS-C105026. It has been validated for use in the following assays: IHC-P.
<b>Target:</b>	SHC (Src homology 2 domain containing) transforming protein 1 (SHC1)
<b>Synonyms:</b>	SHC1 Antibody, p46 shc Antibody, p52 shc Antibody, SH2 domain protein C1 Antibody, p66 Antibody, SHCA Antibody, SHC Antibody, SHC-transforming protein 1 Antibody, SHC-transforming protein 3 Antibody, SHC-transforming protein A Antibody
<b>Host</b>	SHC1 antibody was produced in Mouse
<b>Clonality:</b>	Monoclonal
<b>Isotype:</b>	IgG,k
<b>Clone Name:</b>	3F4
<b>Immunogen Species:</b>	p66 / SHC antibody was raised against Human
<b>Antigen Type:</b>	Recombinant protein
<b>Immunogen:</b>	p66 / SHC antibody was raised against sHC1 (AAH33925, 171 a.a. ~ 280 a.a) partial recombinant protein with GST tag. MW of the GST tag alone is 26 KDa.
<b>Reactivity:</b>	Human
<b>Purification:</b>	Protein A purified
<b>Presentation:</b>	PBS, pH 7.2. Sourced in Ascites.
<b>Recommended Storage:</b>	Store at -20°C. Aliquot to avoid freeze/thaw cycles.
<b>Usage Summary:</b>	Western Blot (Cell lysate) - positive control A-431. Immunofluorescence (10 ug/ml) - positive control A-431 cells. Sandwich ELISA (Recombinant protein). In situ Proximity Ligation Assay (Cell).
<b>Uses:</b>	IHC - Paraffin (1 µg/ml), Immunofluorescence (10 µg/ml), Western blot, ELISA, Proximity Ligation Assay (Optimal dilution to be determined by the researcher)
<b>Size:</b>	50 µg
<b>Concentration:</b>	0.35 mg/ml

**Immunohistochemistry Image:**



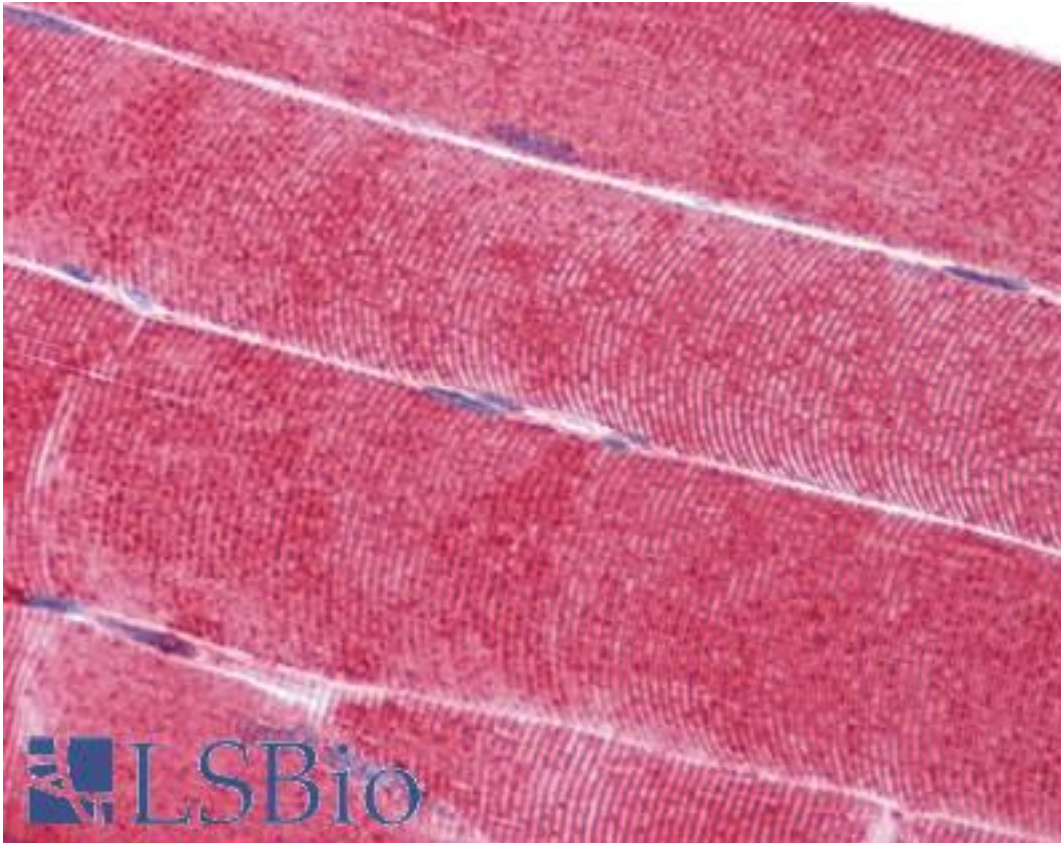
Anti-SHC1 antibody IHC of human colon, myenteric plexus. Immunohistochemistry of formalin-fixed, paraffin-embedded tissue after heat-induced antigen retrieval. Antibody LS-B4416 concentration 1 ug/ml.

**Immunohistochemistry Image:**



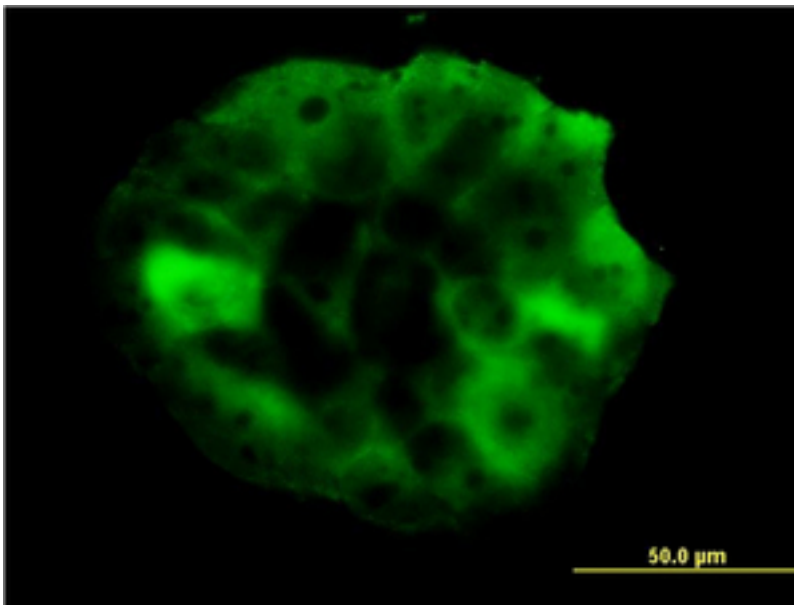
Anti-SHC1 antibody IHC of human adipocytes. Immunohistochemistry of formalin-fixed, paraffin-embedded tissue after heat-induced antigen retrieval. Antibody LS-B4416 concentration 1 ug/ml.

**Immunohistochemistry Image:**



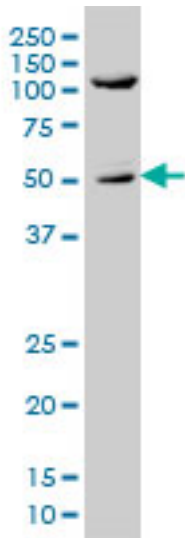
Anti-SHC1 antibody IHC of human skeletal muscle. Immunohistochemistry of formalin-fixed, paraffin-embedded tissue after heat-induced antigen retrieval. Antibody LS-B4416 concentration 1 ug/ml.

**Immunofluorescence Image:**



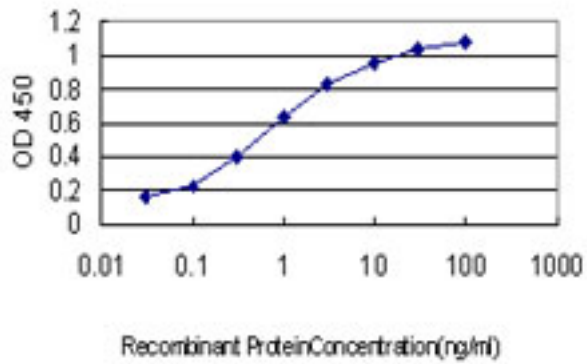
Immunofluorescence of monoclonal antibody to SHC1 on A-431 cells (antibody concentration 10 ug/ml).

**Western Blot Image:**



SHC1 monoclonal antibody clone 3F4 Western blot of SHC1 expression in A-431.

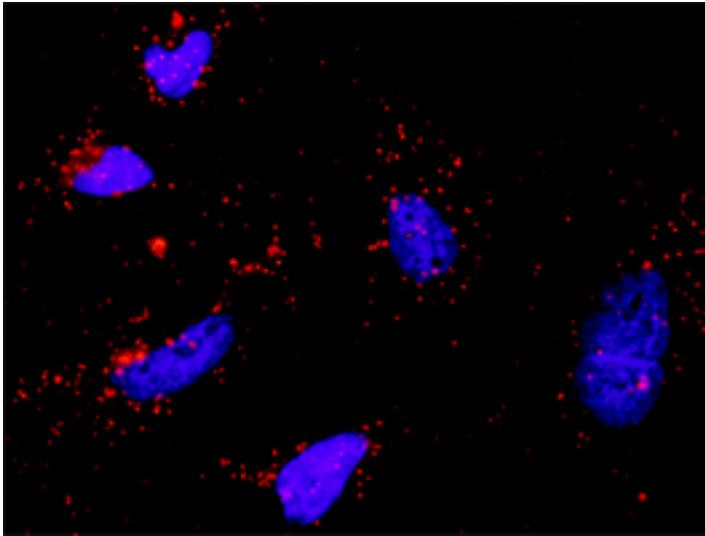
**ELISA Image:**



Detection limit for recombinant GST tagged SHC1 is approximately 0.03 ng/ml as a capture antibody.



**Proximity Ligation Analysis Image:**



Proximity Ligation Analysis (PLA) of protein-protein interactions between PIK3R1 and SHC1. HeLa cells were stained with anti-PIK3R1 rabbit purified polyclonal 1:1200 and anti-SHC1 mouse monoclonal antibody 1:50. Signals were detected by Duolink 30 Detection.

**Requested From:**

Japan

Laboratory Reagent For In Vitro Research Use Only

Not for resale without prior written consent from LifeSpan BioSciences, Inc.

Created on 9/23/2014

© 2014 LifeSpan BioSciences