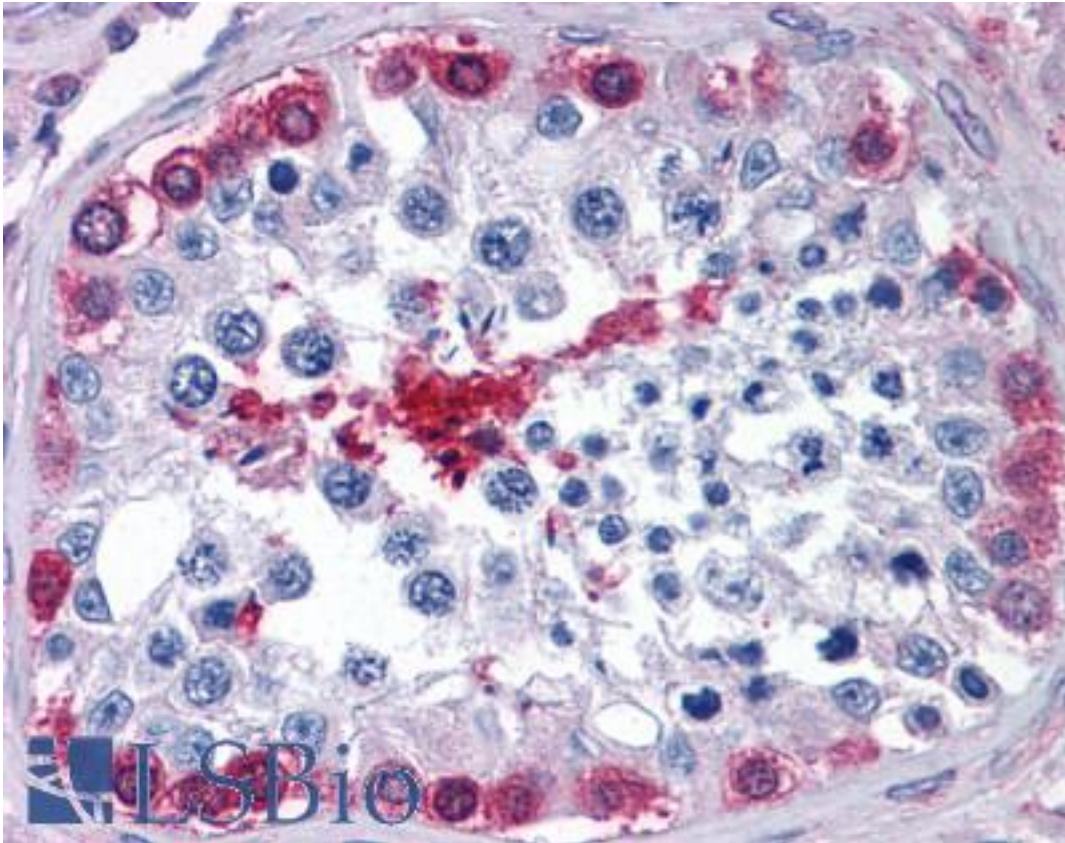


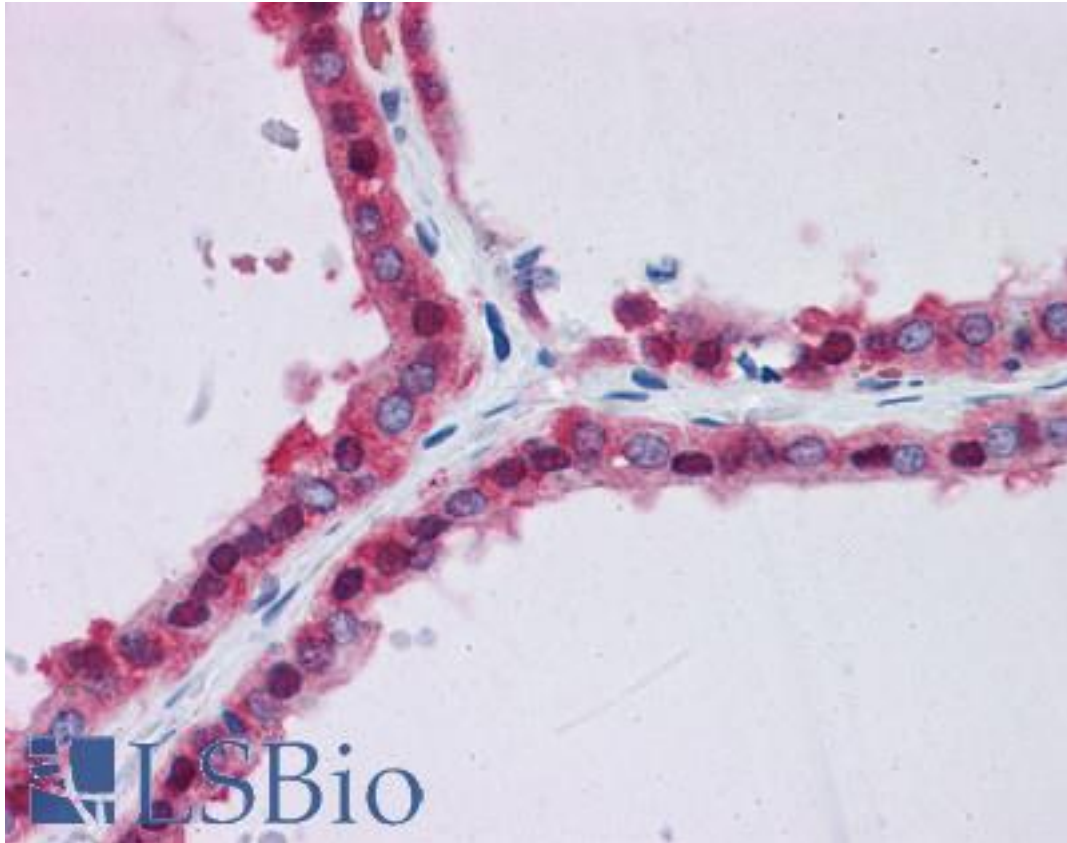
GPI Goat anti-Human Polyclonal (N-Terminus) Antibody - LS-B4412 - LSBio	
<b>CatalogID:</b>	LS-B4412
<b>Validation:</b>	This antibody replaces catalog number LS-C108930. It has been validated for use in the following assays: IHC-P.
<b>Target:</b>	glucose-6-phosphate isomerase (GPI)
<b>Synonyms:</b>	GPI Antibody, AMF Antibody, Autocrine motility factor Antibody, Glucose phosphate isomerase Antibody, Hexose monophosphate isomerase Antibody, Hexosephosphate isomerase Antibody, Neuroleukin Antibody, Oxoisomerase Antibody, Phosphoglucose isomerase Antibody, Phosphohexomutase Antibody, Phosphohexose isomerase Antibody, SA36 Antibody, PGI Antibody, SA-36 Antibody, Glucose-6-phosphate isomerase Antibody, GNPI Antibody, PHI Antibody, Phosphosaccharomutase Antibody, Sperm antigen 36 Antibody, Sperm antigen-36 Antibody
<b>Host</b>	GPI antibody was produced in Goat
<b>Clonality:</b>	Polyclonal
<b>Immunogen Species:</b>	GPI antibody was raised against Human
<b>Antigen Type:</b>	Synthetic peptide
<b>Immunogen:</b>	GPI antibody was raised against synthetic peptide C-RERMFNGEKINYT from an internal region (near N-terminus) of human GPI (NP_000166.2). Percent identity by BLAST analysis: Human, Gorilla, Orangutan, Monkey, Marmoset (100%); Elephant, Pig (92%); Panda, Bovine, Dog, Horse, Chicken, Platypus (85%).
<b>Specificity:</b>	Human GPI.
<b>Epitope:</b>	N-Terminus
<b>Reactivity:</b>	Human, Gorilla, Orangutan, Monkey
<b>Predicted Reactivity:</b>	Pig
<b>Purification:</b>	Immunoaffinity purified
<b>Presentation:</b>	Tris-buffered saline, pH 7.3, 0.5% BSA, 0.02% sodium azide
<b>Recommended Storage:</b>	Store at -20°C. Minimize freezing and thawing.
<b>Usage Summary:</b>	Western Blot: Approx 60kD band observed in Human Heart lysates (calculated MW of 63.1kD according to NP_000166.2). Recommended concentration: 0.1-0.3 ug/ml.
<b>Uses:</b>	IHC - Paraffin (3.75 µg/ml), Western blot (0.1 - 0.3 µg/ml), ELISA (1:128000) (Optimal dilution to be determined by the researcher)
<b>Size:</b>	50 µg
<b>Concentration:</b>	0.5 mg/ml

**Immunohistochemistry Image:**



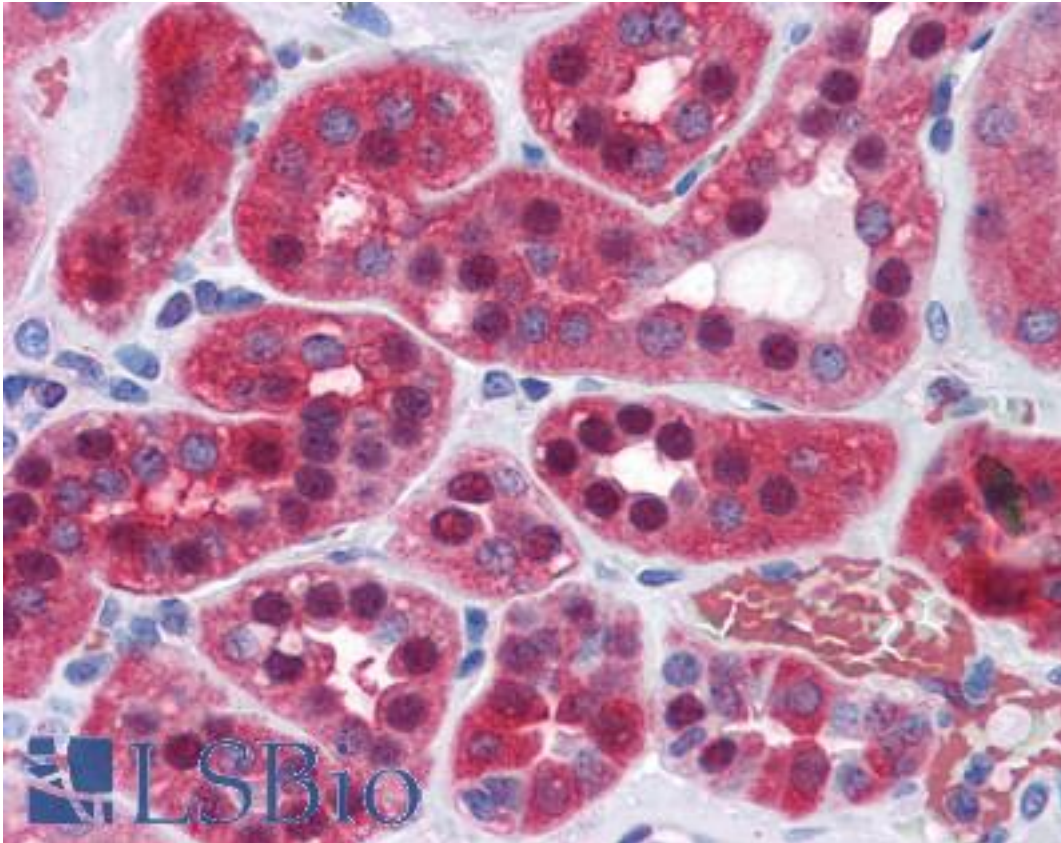
Anti-GPI antibody IHC of human testis. Immunohistochemistry of formalin-fixed, paraffin-embedded tissue after heat-induced antigen retrieval. Antibody LS-B4412 concentration 3.75 ug/ml.

**Immunohistochemistry Image:**



Anti-GPI antibody IHC of human thyroid. Immunohistochemistry of formalin-fixed, paraffin-embedded tissue after heat-induced antigen retrieval. Antibody LS-B4412 concentration 3.75 ug/ml.

**Immunohistochemistry Image:**



Anti-GPI antibody IHC of human kidney. Immunohistochemistry of formalin-fixed, paraffin-embedded tissue after heat-induced antigen retrieval. Antibody LS-B4412 concentration 3.75 ug/ml.

**Western Blot Image:**



GPI antibody (0.3 ug/ml) staining of Human Heart lysate (35 ug protein in RIPA buffer). Primary incubation was 1 hour. Detected by chemiluminescence.

**Requested From:**

Japan

Laboratory Reagent For In Vitro Research Use Only

Not for resale without prior written consent from LifeSpan BioSciences, Inc.

Created on 9/23/2014

© 2014 LifeSpan BioSciences