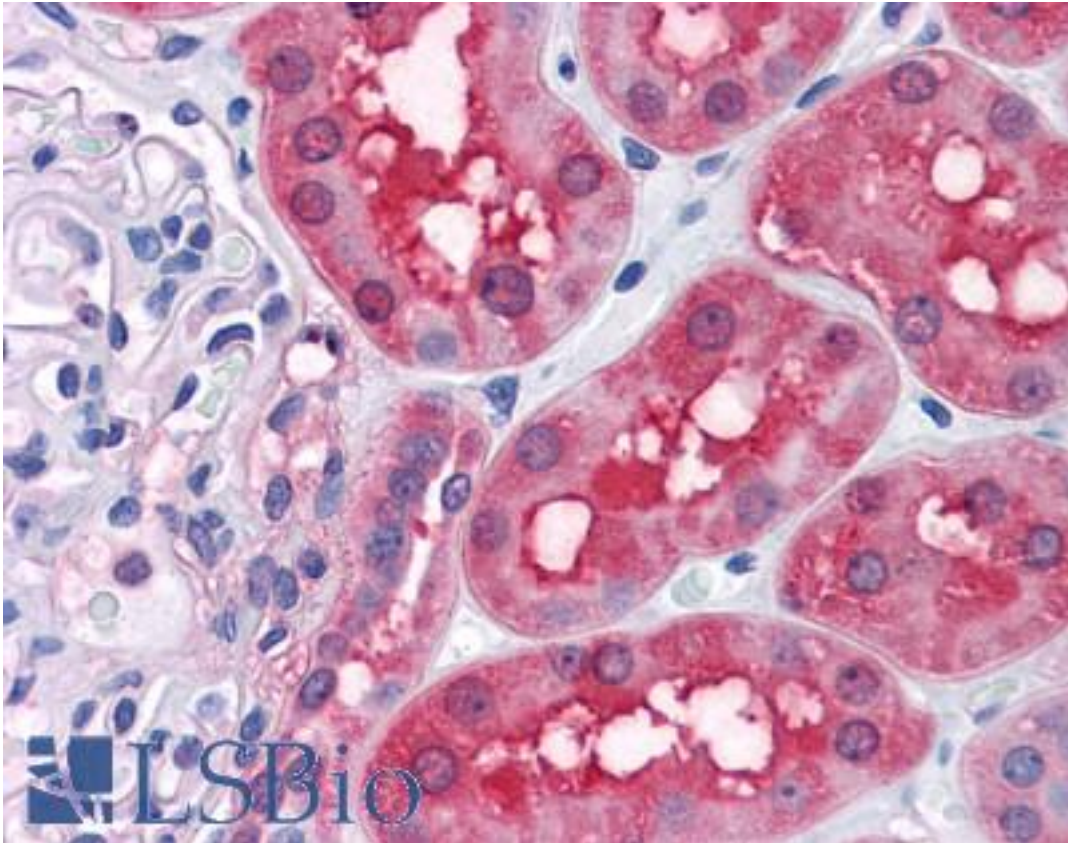


RRM2 Mouse anti-Human Monoclonal (1E1) Antibody - LS-B4409 - LSBio

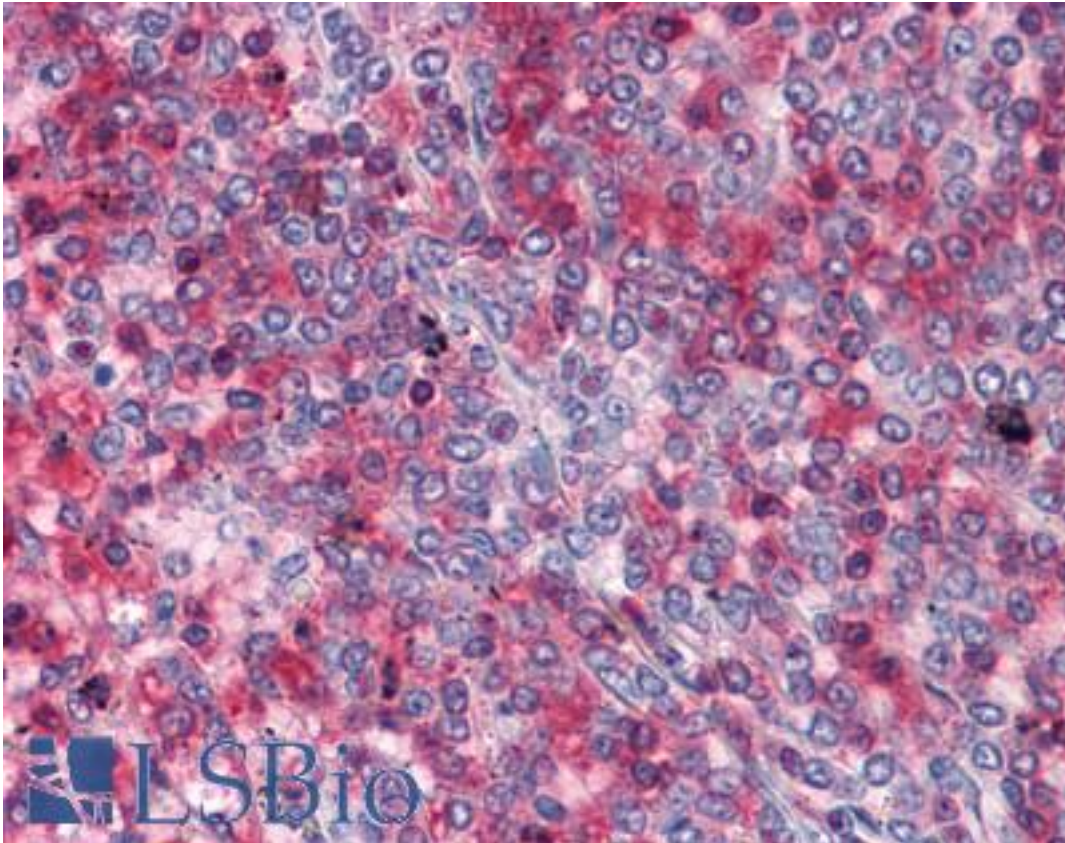
CatalogID:	LS-B4409
Validation:	This antibody replaces catalog number LS-C105017. It has been validated for use in the following assays: IHC-P.
Target:	ribonucleotide reductase M2 (RRM2)
Synonyms:	RRM2 Antibody, Ribonucleotide reductase M2 Antibody, RR2 Antibody, RR2M Antibody
Host	RRM2 antibody was produced in Mouse
Clonality:	Monoclonal
Isotype:	IgG1,k
Clone Name:	1E1
Immunogen Species:	RRM2 antibody was raised against Human
Antigen Type:	Recombinant protein
Immunogen:	RRM2 antibody was raised against rRM2 (NP_001025, 1 a.a. ~ 111 a.a) partial recombinant protein with GST tag. MW of the GST tag alone is 26 KDa.
Reactivity:	Human
Purification:	Protein A purified
Presentation:	PBS, pH 7.4. Sourced in Ascites.
Recommended Storage:	Store at -20°C. Aliquot to avoid freeze/thaw cycles.
Usage Summary:	Western Blot (Cell lysate) - positive control HepG2. Immunofluorescence (10 ug/ml) - positive control HeLa cells. Sandwich ELISA (Recombinant protein).
Uses:	IHC - Paraffin (5 µg/ml), Immunofluorescence (10 µg/ml), Western blot, ELISA (Optimal dilution to be determined by the researcher)
Size:	50 µg
Concentration:	0.43 mg/ml

Immunohistochemistry Image:



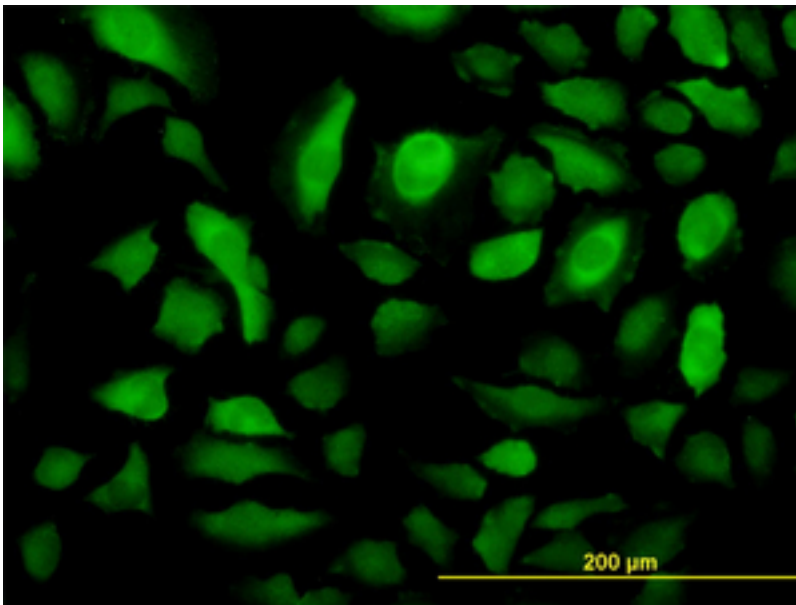
Anti-RRM2 antibody IHC of human kidney. Immunohistochemistry of formalin-fixed, paraffin-embedded tissue after heat-induced antigen retrieval. Antibody LS-B4409 concentration 5 ug/ml.

Immunohistochemistry Image:



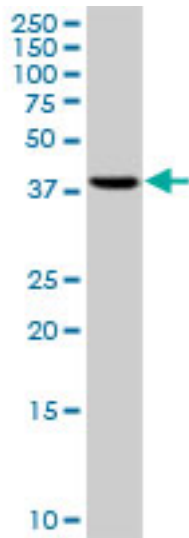
Anti-RRM2 antibody IHC of human spleen. Immunohistochemistry of formalin-fixed, paraffin-embedded tissue after heat-induced antigen retrieval. Antibody LS-B4409 concentration 5 ug/ml.

Immunofluorescence Image:



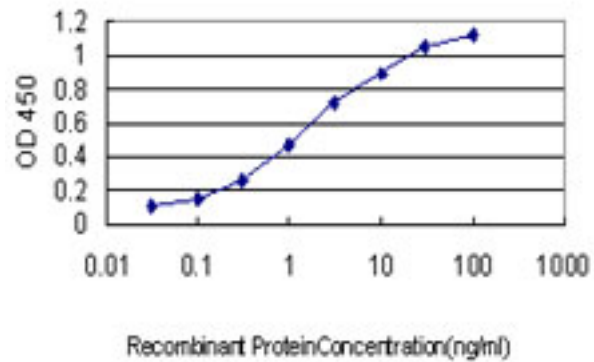
Immunofluorescence of monoclonal antibody to RRM2 on HeLa cell (antibody concentration 10 ug/ml).

Western Blot Image:



RRM2 monoclonal antibody clone 1E1. Western blot of RRM2 expression in HepG2.

ELISA Image:



Detection limit for recombinant GST tagged RRM2 is approximately 0.03 ng/ml as a capture antibody.

Requested From:

Japan

Laboratory Reagent For In Vitro Research Use Only

Not for resale without prior written consent from LifeSpan BioSciences, Inc.

Created on 9/23/2014

© 2014 LifeSpan BioSciences