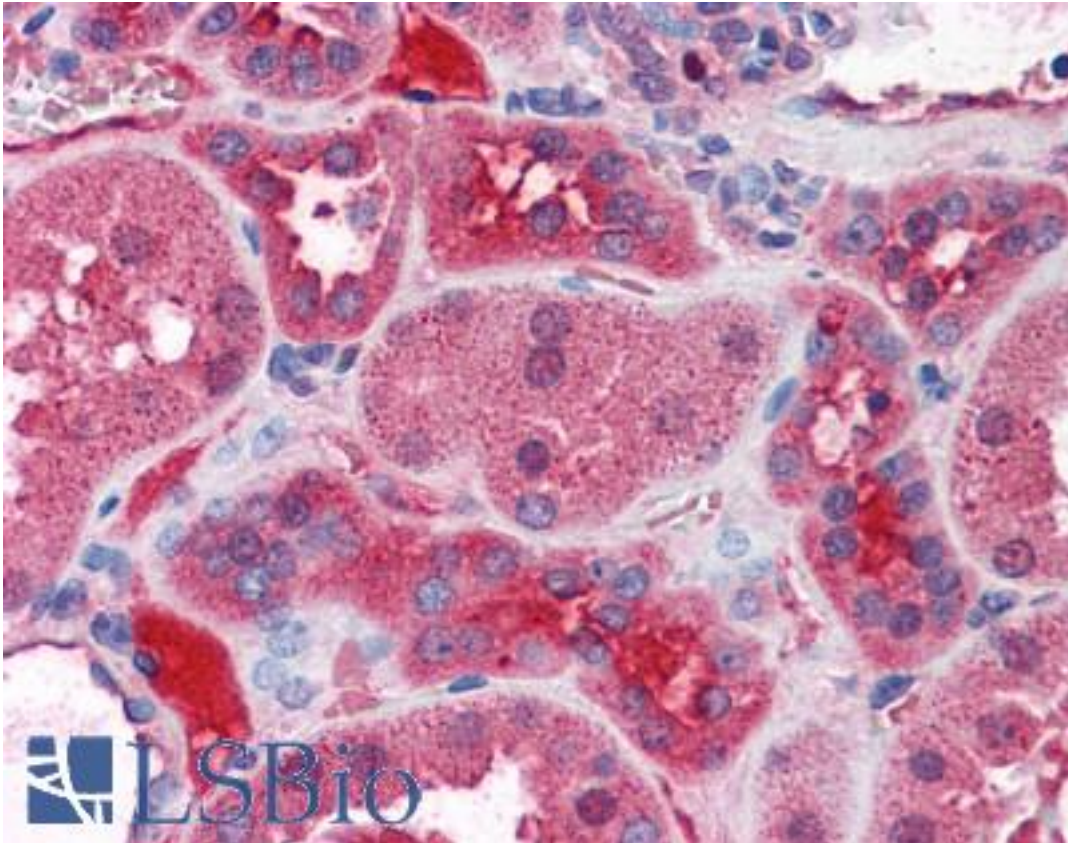


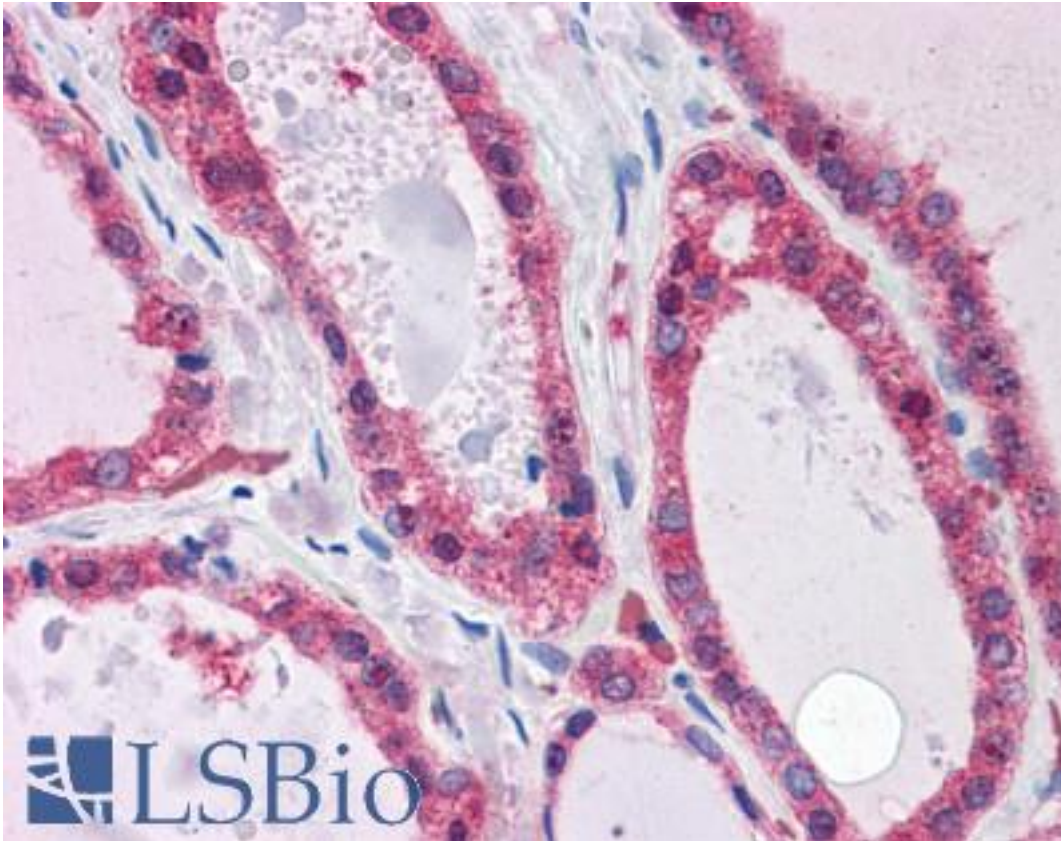
KCNN2 Goat anti-Human Polyclonal (Internal) Antibody - LS-B4408 - LSBio	
CatalogID:	LS-B4408
Validation:	This antibody replaces catalog number LS-C108908. It has been validated for use in the following assays: IHC-P.
Target:	potassium intermediate/small conductance calcium-activated channel, subfamily N, member 2 (KCNN2)
Synonyms:	KCNN2 Antibody, HSK2 Antibody, KCa2.2 Antibody, Sk2 Antibody, SKCA2 Antibody, SKCa 2 Antibody
Family / Subfamily:	Ion Channel / Potassium channel - calcium-activated
Host	KCNN2 antibody was produced in Goat
Clonality:	Polyclonal
Immunogen Species:	KCNN2 antibody was raised against Human
Antigen Type:	Synthetic peptide
Immunogen:	KCNN2 antibody was raised against synthetic peptide C-ESYDKHVTYNAER from an internal region of human KCNN2 (NP_067627.2; NP_740721.1). Percent identity by BLAST analysis: Human, Gorilla, Orangutan, Gibbon, Monkey (100%); Rat, Hamster, Panda, Dog, Horse, Guinea pig (92%); Marmoset, Mouse, Elephant, Bat (85%).
Specificity:	Human KCNN2. This antibody is expected to recognize both isoforms (NP_067627.2; NP_740721.1).
Epitope:	Internal
Reactivity:	Human, Gorilla, Orangutan, Gibbon, Monkey
Predicted Reactivity:	Rat, Dog, Guinea pig, Hamster, Horse
Purification:	Immunoaffinity purified
Presentation:	Tris-buffered saline, pH 7.3, 0.5% BSA, 0.02% sodium azide
Recommended Storage:	Store at -20°C. Minimize freezing and thawing.
Usage Summary:	Western Blot: Approx 70kD and 23kD bands observed in Human Liver lysates (calculated MW of 63.8kD according to NP_067627.2 and of 26.3kD according to NP_740721.1). Recommended concentration: 0.3-1 ug/ml.
Uses:	IHC - Paraffin (3.75 µg/ml), Western blot (0.3 - 1 µg/ml), ELISA (1:64000) (Optimal dilution to be determined by the researcher)
Size:	50 µg
Concentration:	0.5 mg/ml

Immunohistochemistry Image:



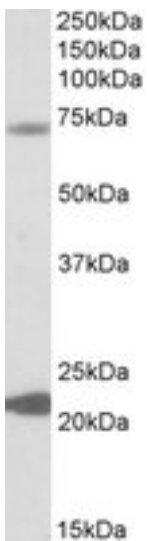
Anti-KCNN2 antibody IHC of human kidney. Immunohistochemistry of formalin-fixed, paraffin-embedded tissue after heat-induced antigen retrieval. Antibody LS-B4408 concentration 3.75 ug/ml.

Immunohistochemistry Image:



Anti-KCNN2 antibody IHC of human thyroid. Immunohistochemistry of formalin-fixed, paraffin-embedded tissue after heat-induced antigen retrieval. Antibody LS-B4408 concentration 3.75 ug/ml.

Western Blot Image:



KCNN2 antibody (0.3 ug/ml) staining of Human Liver lysate (35 ug protein in RIPA buffer). Primary incubation was 1 hour. Detected by chemiluminescence.

Requested From:

Japan

Laboratory Reagent For In Vitro Research Use Only

Not for resale without prior written consent from LifeSpan BioSciences, Inc.

Created on 9/23/2014

© 2014 LifeSpan BioSciences