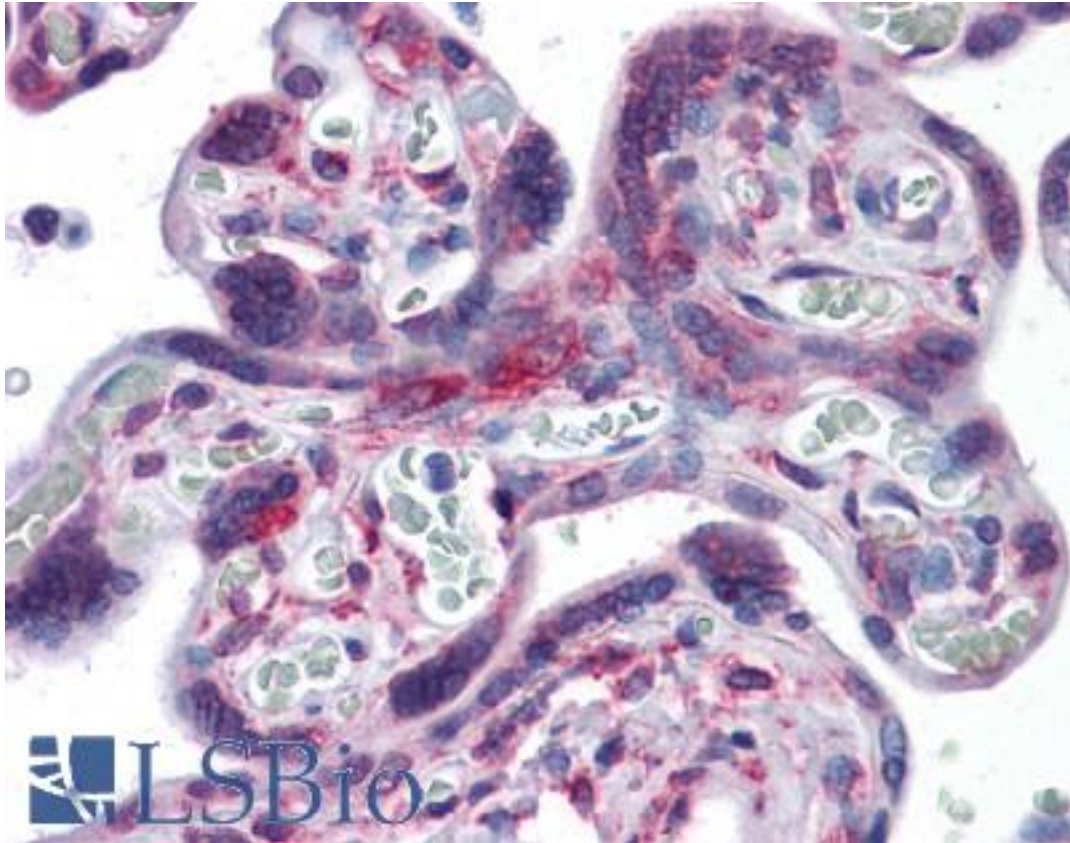


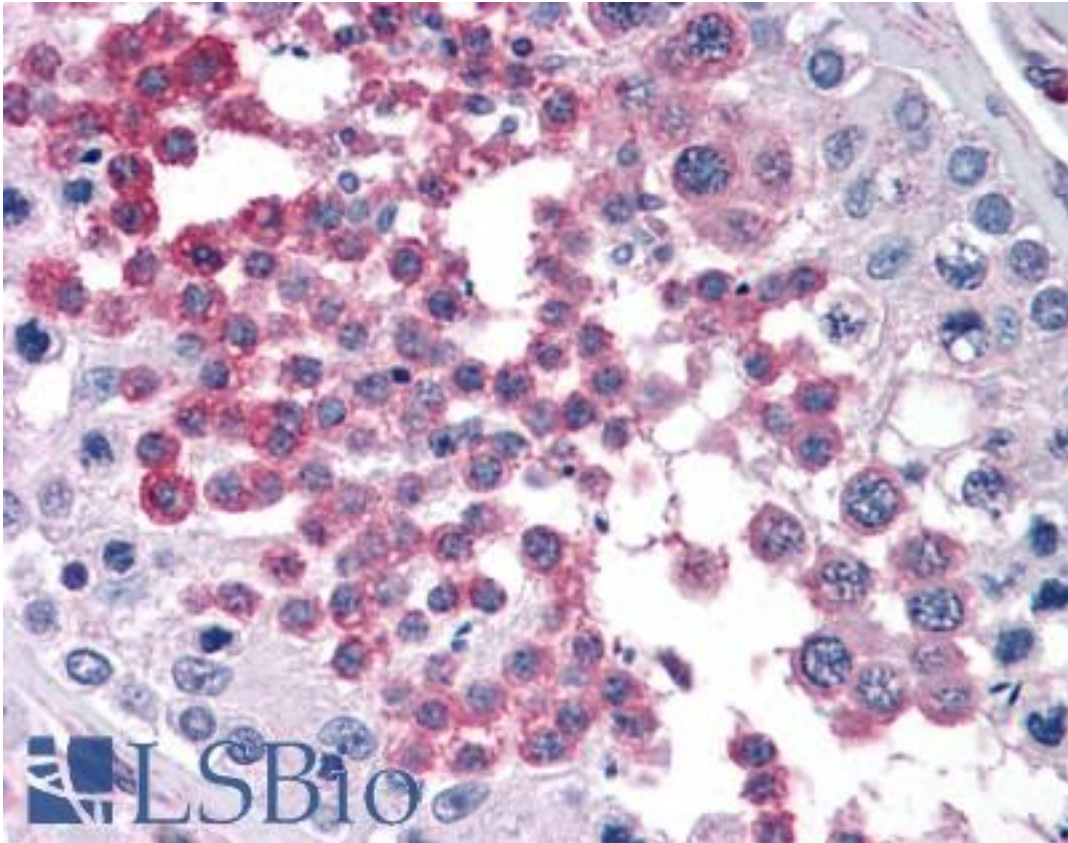
RPS7 Mouse anti-Human Monoclonal (3G4) Antibody - LS-B4406 - LSBio	
CatalogID:	LS-B4406
Validation:	This antibody replaces catalog number LS-C105015. It has been validated for use in the following assays: IHC-P.
Target:	ribosomal protein S7 (RPS7)
Synonyms:	RPS7 Antibody, 40S ribosomal protein S7 Antibody, Ribosomal protein S7 Antibody, DBA8 Antibody
Host	RPS7 antibody was produced in Mouse
Clonality:	Monoclonal
Isotype:	IgG1,k
Clone Name:	3G4
Immunogen Species:	RPS7 antibody was raised against Human
Antigen Type:	Recombinant protein
Immunogen:	RPS7 antibody was raised against rPS7 (NP_001002, 95 a.a. ~ 195 a.a) partial recombinant protein with GST tag. MW of the GST tag alone is 26 KDa.
Reactivity:	Human, Mouse, Rat
Purification:	Protein A purified
Presentation:	PBS, pH 7.2. Sourced in Ascites.
Recommended Storage:	Store at -20°C. Aliquot to avoid freeze/thaw cycles.
Usage Summary:	Western Blot (Cell lysate) - positive control HeLa. Western Blot (Cell lysate) - positive control PC-12. Western Blot (Cell lysate) - positive control Raw 264. Western Blot (Cell lysate) - positive control NIH/3T3. Immunofluorescence (20 ug/ml) - positive control HeLa cells. Sandwich ELISA (Recombinant protein).
Uses:	IHC - Paraffin (5 µg/ml), Immunofluorescence (20 µg/ml), Western blot, ELISA (Optimal dilution to be determined by the researcher)
Size:	50 µg
Concentration:	0.39 mg/ml

Immunohistochemistry Image:



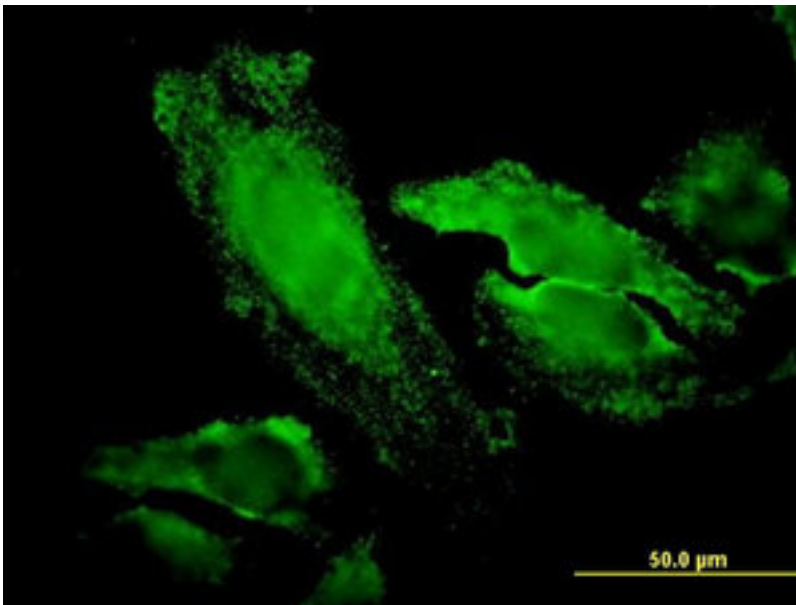
Anti-RPS7 antibody IHC of human placenta. Immunohistochemistry of formalin-fixed, paraffin-embedded tissue after heat-induced antigen retrieval. Antibody LS-B4406 concentration 5 ug/ml.

Immunohistochemistry Image:



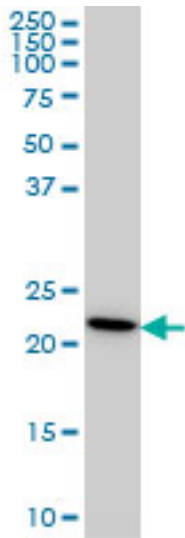
Anti-RPS7 antibody IHC of human testis. Immunohistochemistry of formalin-fixed, paraffin-embedded tissue after heat-induced antigen retrieval. Antibody LS-B4406 concentration 5 ug/ml.

Immunofluorescence Image:



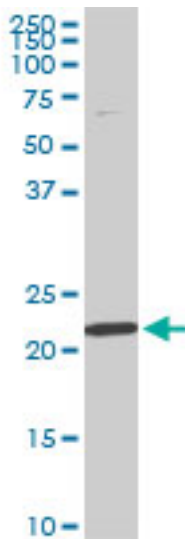
Immunofluorescence of monoclonal antibody to RPS7 on HeLa cell (antibody concentration 20 ug/ml).

Western Blot Image:



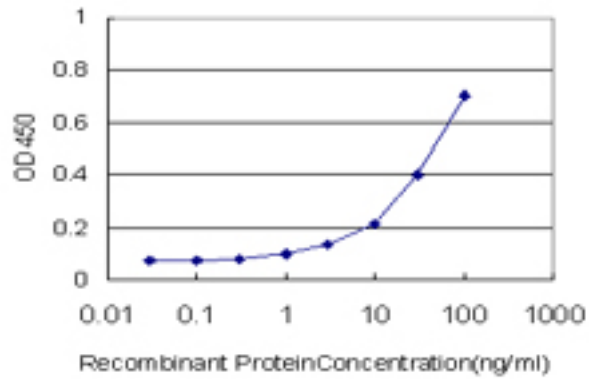
RPS7 monoclonal antibody clone 3G4 Western blot of RPS7 expression in HeLa.

Western Blot Image:



RPS7 monoclonal antibody clone 3G4. Western blot of RPS7 expression in NIH/3T3.

ELISA Image:



Detection limit for recombinant GST tagged RPS7 is approximately 1 ng/ml as a capture antibody.

Requested From:

Japan

Laboratory Reagent For In Vitro Research Use Only

Not for resale without prior written consent from LifeSpan BioSciences, Inc.

Created on 9/23/2014

© 2014 LifeSpan BioSciences