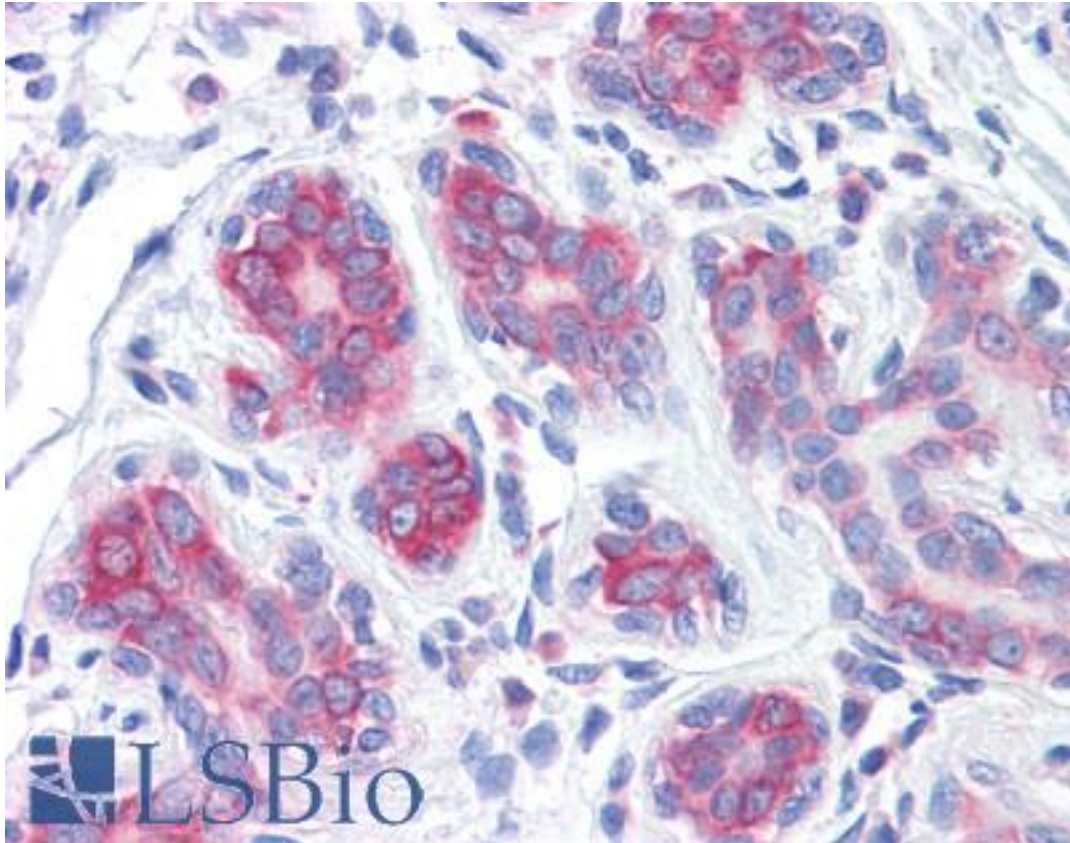


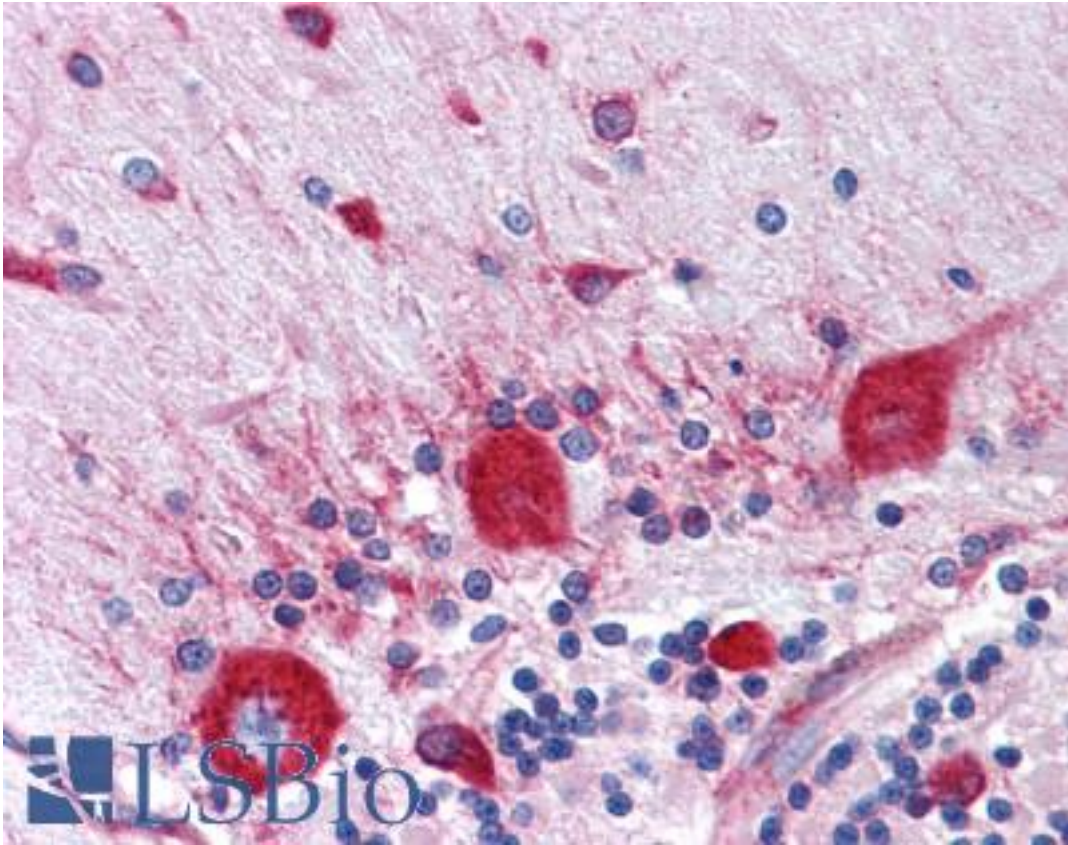
RPS2 Mouse anti-Human Monoclonal (3G6) Antibody - LS-B4404 - LSBio	
<b>CatalogID:</b>	LS-B4404
<b>Validation:</b>	This antibody replaces catalog number LS-C104904. It has been validated for use in the following assays: IHC-P.
<b>Target:</b>	ribosomal protein S2 (RPS2)
<b>Synonyms:</b>	RPS2 Antibody, 40S ribosomal protein S4 Antibody, 40S ribosomal protein S2 Antibody, LLREP3 Antibody, OK/KNS-cl.6 Antibody, Ribosomal protein S2 Antibody, S2 Antibody, RPS4 Antibody, Protein LLRep3 Antibody
<b>Host</b>	RPS2 antibody was produced in Mouse
<b>Clonality:</b>	Monoclonal
<b>Isotype:</b>	IgG2a,k
<b>Clone Name:</b>	3G6
<b>Immunogen Species:</b>	RPS2 antibody was raised against Human
<b>Antigen Type:</b>	Recombinant protein
<b>Immunogen:</b>	RPS2 antibody was raised against rPS2 (NP_002943, 198 a.a. ~ 294 a.a) partial recombinant protein with GST tag. MW of the GST tag alone is 26 KDa.
<b>Reactivity:</b>	Human
<b>Purification:</b>	Protein A purified
<b>Presentation:</b>	PBS, pH 7.2
<b>Recommended Storage:</b>	Store at -20°C. Aliquot to avoid freeze/thaw cycles.
<b>Usage Summary:</b>	Western blot performed with the recombinant protein used as the immunogen. Sandwich ELISA (Recombinant protein).
<b>Uses:</b>	IHC - Paraffin (5 µg/ml), Western blot, ELISA (Optimal dilution to be determined by the researcher)
<b>Size:</b>	50 µg
<b>Concentration:</b>	0.4 mg/ml

**Immunohistochemistry Image:**



Anti-RPS2 antibody IHC of human breast. Immunohistochemistry of formalin-fixed, paraffin-embedded tissue after heat-induced antigen retrieval. Antibody LS-B4404 concentration 5 ug/ml.

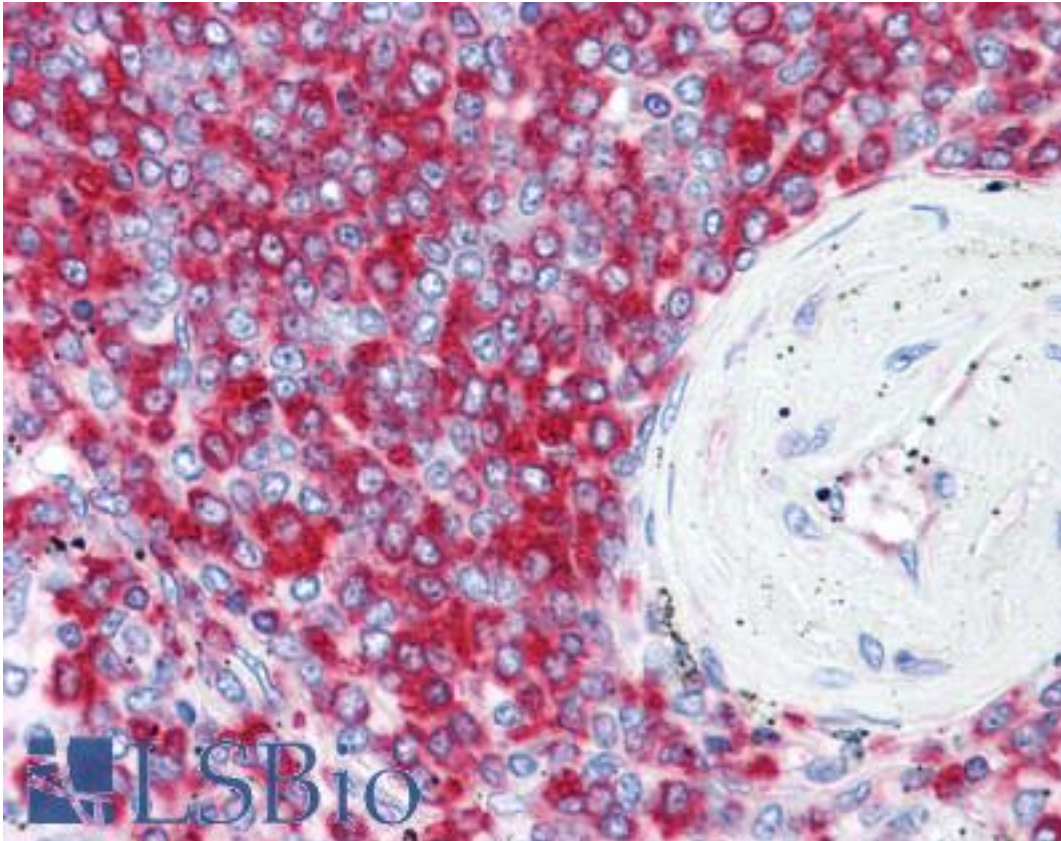
**Immunohistochemistry Image:**



Anti-RPS2 antibody IHC of human brain, cerebellum. Immunohistochemistry of formalin-fixed, paraffin-embedded tissue after heat-induced antigen retrieval. Antibody LS-B4404 concentration 5 ug/ml.

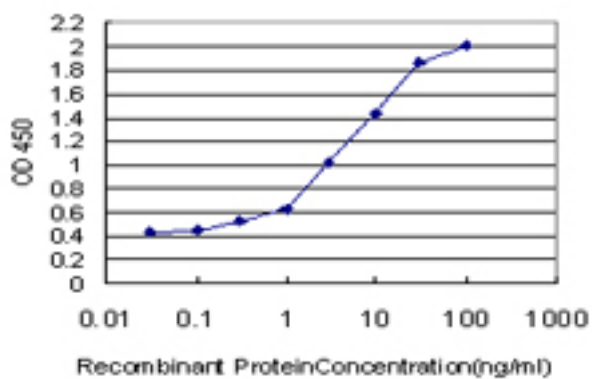


**Immunohistochemistry Image:**



Anti-RPS2 antibody IHC of human spleen. Immunohistochemistry of formalin-fixed, paraffin-embedded tissue after heat-induced antigen retrieval. Antibody LS-B4404 concentration 5 ug/ml.

**ELISA Image:**



Detection limit for recombinant GST tagged RPS2 is approximately 0.03 ng/ml as a capture antibody.

Requested From:

Japan

Laboratory Reagent For In Vitro Research Use Only

Not for resale without prior written consent from LifeSpan BioSciences, Inc.

Created on 9/23/2014

© 2014 LifeSpan BioSciences