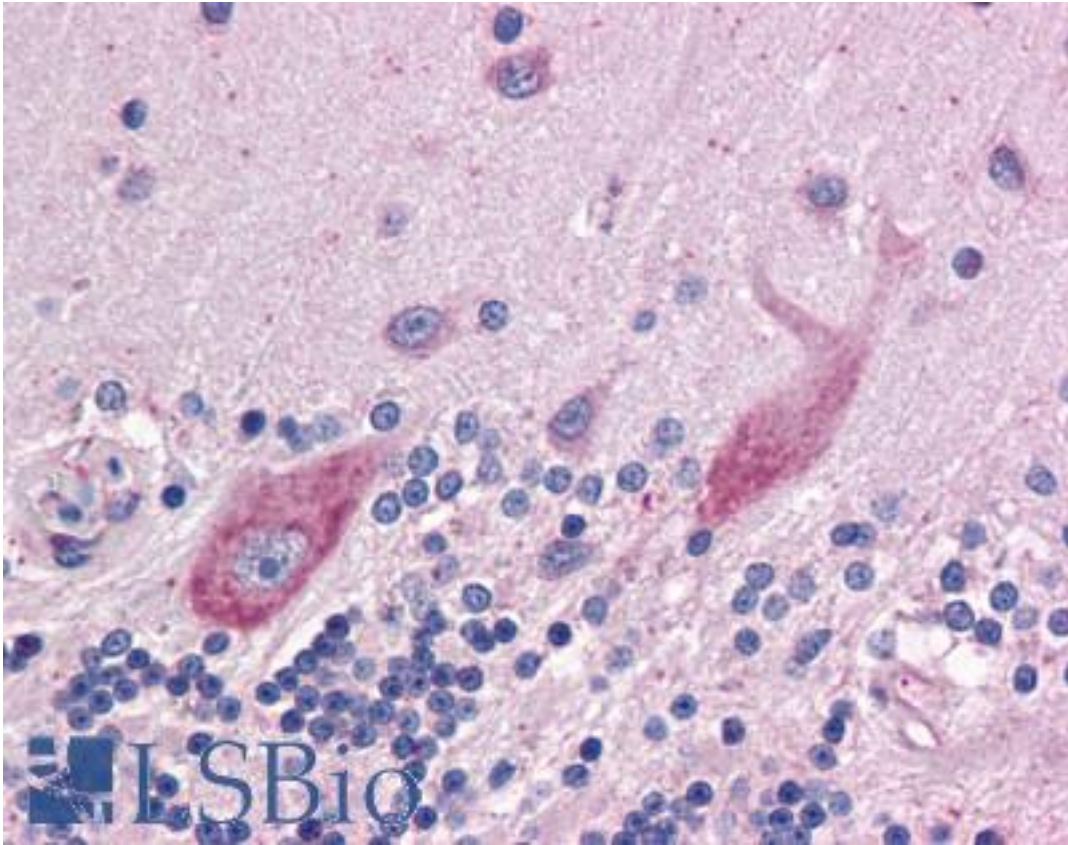


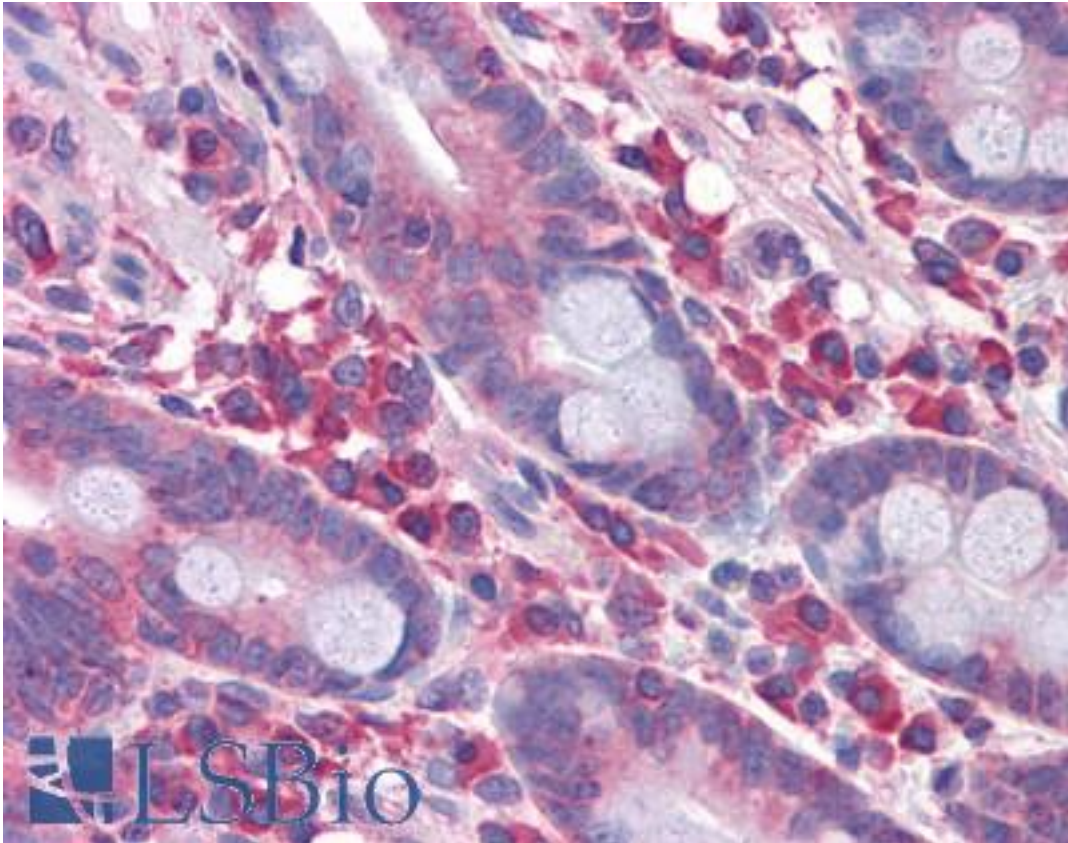
Requiem / DPF2 Mouse anti-Human Monoclonal (2F6) Antibody - LS-B4402 - LSBio	
CatalogID:	LS-B4402
Validation:	This antibody replaces catalog number LS-C104901. It has been validated for use in the following assays: IHC-P.
Target:	D4, zinc and double PHD fingers family 2 (DPF2)
Synonyms:	DPF2 Antibody, BAF45D Antibody, REQ Antibody, UBID4 Antibody, Zinc finger protein ubi-d4 Antibody, BRG1-associated factor 45D Antibody, Ubi-d4 Antibody, Protein requiem Antibody, Requiem Antibody
Host	DPF2 antibody was produced in Mouse
Clonality:	Monoclonal
Isotype:	IgG2a,k
Clone Name:	2F6
Immunogen Species:	Requiem / DPF2 antibody was raised against Human
Antigen Type:	Recombinant protein
Immunogen:	Requiem / DPF2 antibody was raised against dPF2 (AAH14889, 56 a.a. ~ 155 a.a) partial recombinant protein with GST tag. MW of the GST tag alone is 26 KDa.
Reactivity:	Human
Purification:	Protein A purified
Presentation:	PBS, pH 7.2. Sourced in Ascites.
Recommended Storage:	Store at -20°C. Aliquot to avoid freeze/thaw cycles.
Usage Summary:	Western Blot (Cell lysate) - positive control LNCaP. Western Blot (Transfected lysate) - positive control transfected 293T cell line. Immunofluorescence (10 ug/ml) - positive control HeLa cells.
Uses:	IHC - Paraffin (2.5 µg/ml), Immunofluorescence (10 µg/ml), Western blot, ELISA (Optimal dilution to be determined by the researcher)
Size:	50 µg
Concentration:	0.5 mg/ml

Immunohistochemistry Image:



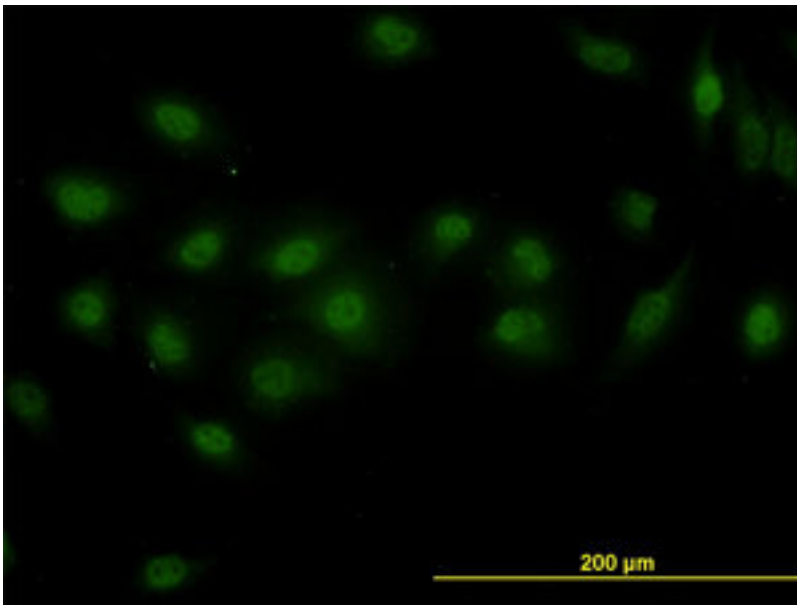
Anti-DPF2 antibody IHC of human brain, cerebellum. Immunohistochemistry of formalin-fixed, paraffin-embedded tissue after heat-induced antigen retrieval. Antibody LS-B4402 concentration 2.5 ug/ml.

Immunohistochemistry Image:



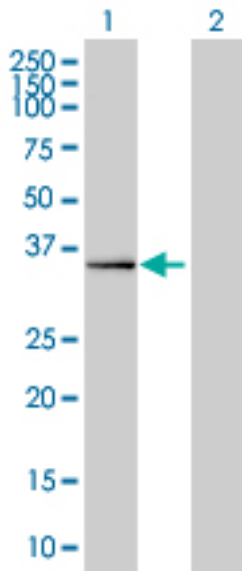
Anti-DPF2 antibody IHC of human small intestine. Immunohistochemistry of formalin-fixed, paraffin-embedded tissue after heat-induced antigen retrieval. Antibody LS-B4402 concentration 2.5 ug/ml.

Immunofluorescence Image:



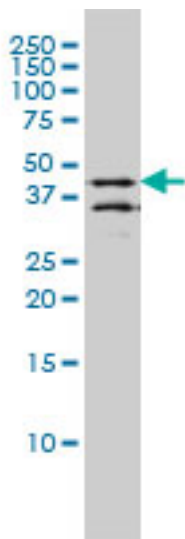
Immunofluorescence of monoclonal antibody to DPF2 on HeLa cell (antibody concentration 10 ug/ml).

Western Blot Image:



Western blot of DPF2 expression in transfected 293T cell line by DPF2 monoclonal antibody clone 2F6.

Western Blot Image:



DPF2 monoclonal antibody clone 2F6 Western blot of DPF2 expression in LNCaP.

Requested From:

Japan

Laboratory Reagent For In Vitro Research Use Only

Not for resale without prior written consent from LifeSpan BioSciences, Inc.

Created on 9/23/2014

© 2014 LifeSpan BioSciences