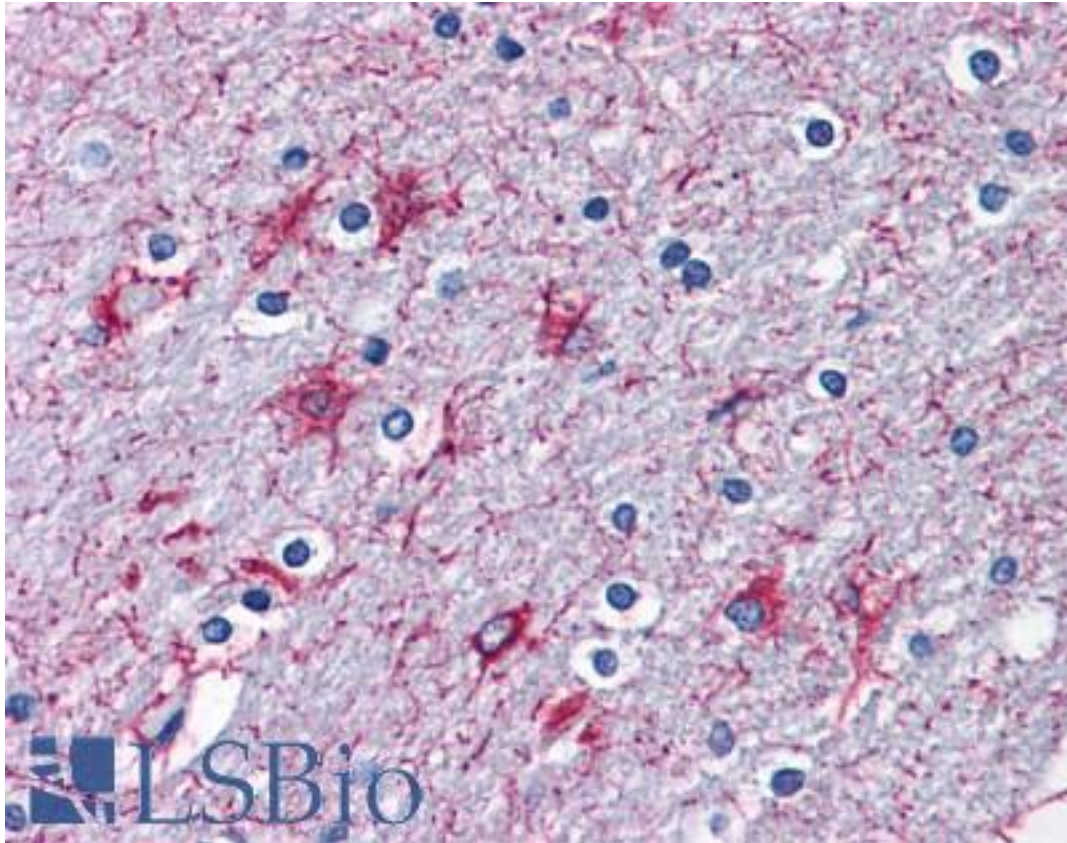


**P2RX7 / P2X7 Goat anti-Human Polyclonal (N-Terminus) Antibody - LS-B4401 - LSBio**

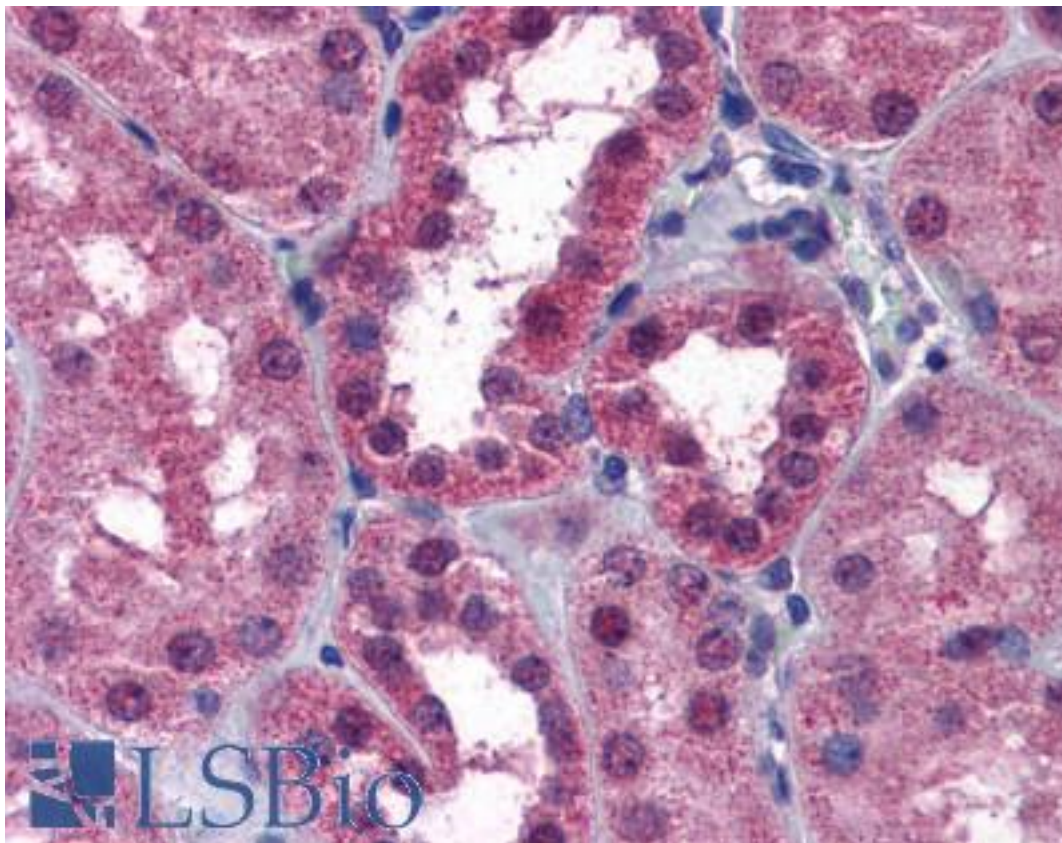
<b>CatalogID:</b>	LS-B4401
<b>Validation:</b>	This antibody replaces catalog number LS-C108123. It has been validated for use in the following assays: IHC-P.
<b>Target:</b>	purinergic receptor P2X, ligand-gated ion channel, 7 (P2RX7)
<b>Synonyms:</b>	P2RX7 Antibody, ATP receptor Antibody, p2X purinoceptor 7 Antibody, p2X receptor 7 Antibody, p2X7 purinoceptor Antibody, p2Z receptor Antibody, Purinergic receptor Antibody, p2RX7 Antibody, p2X7 Antibody, p2X7 receptor Antibody
<b>Family / Subfamily:</b>	Ion Channel / P2X receptor
<b>Host</b>	P2RX7 antibody was produced in Goat
<b>Clonality:</b>	Polyclonal
<b>Immunogen Species:</b>	P2RX7 / P2X7 antibody was raised against Human
<b>Antigen Type:</b>	Synthetic peptide
<b>Immunogen:</b>	P2RX7 / P2X7 antibody was raised against synthetic peptide YETNKVTRIQSMNY-C from the N-terminus of human P2RX7 / P2X7 (NP_002553.2). Percent identity by BLAST analysis: Human, Gorilla, Gibbon, Marmoset, Hamster, Pig (100%); Monkey, Mouse, Rat, Guinea pig (93%); Elephant, Panda, Dog, Rabbit (86%).
<b>Specificity:</b>	Human P2RX7 / P2X7.
<b>Epitope:</b>	N-Terminus
<b>Reactivity:</b>	Human, Gorilla, Gibbon, Hamster, Pig
<b>Predicted Reactivity:</b>	Monkey, Mouse, Rat, Guinea pig
<b>Purification:</b>	Immunoaffinity purified
<b>Presentation:</b>	Tris-buffered saline, pH 7.3, 0.5% BSA, 0.02% sodium azide
<b>Recommended Storage:</b>	Store at -20°C. Minimize freezing and thawing.
<b>Usage Summary:</b>	Western Blot: Approx 37kD and 70kD band observed in Human Brain (Frontal Cortex) lysates (calculated MW of 68.6kD according to NP_002553.2). Recommended concentration: 1-3 ug/ml.
<b>Uses:</b>	IHC - Paraffin (3.75 µg/ml), Western blot (1 - 3 µg/ml), ELISA (1:16000) (Optimal dilution to be determined by the researcher)
<b>Size:</b>	50 µg
<b>Concentration:</b>	0.5 mg/ml

**Immunohistochemistry Image:**



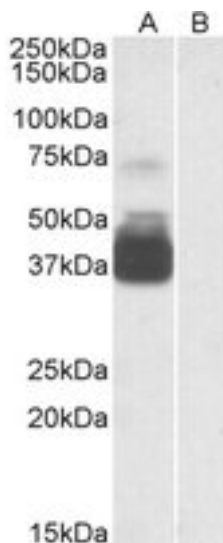
Anti-P2RX7 / P2X7 antibody IHC of human brain, cortex. Immunohistochemistry of formalin-fixed, paraffin-embedded tissue after heat-induced antigen retrieval. Antibody LS-B4401 concentration 3.75 ug/ml.

**Immunohistochemistry Image:**



Anti-P2RX7 / P2X7 antibody IHC of human kidney. Immunohistochemistry of formalin-fixed, paraffin-embedded tissue after heat-induced antigen retrieval. Antibody LS-B4401 concentration 3.75 ug/ml.

**Western Blot Image:**



P2RX7 antibody staining (0.3 ug/ml) of Human Brain (Frontal Cortex) lysate (35 ug protein in RIPA buffer) with (B) and without (A) blocking with the immunizing peptide. Primary incubation was 1 hour. Detected by chemiluminescence.

Requested From:

Japan

Laboratory Reagent For In Vitro Research Use Only

Not for resale without prior written consent from LifeSpan BioSciences, Inc.

Created on 9/23/2014

© 2014 LifeSpan BioSciences