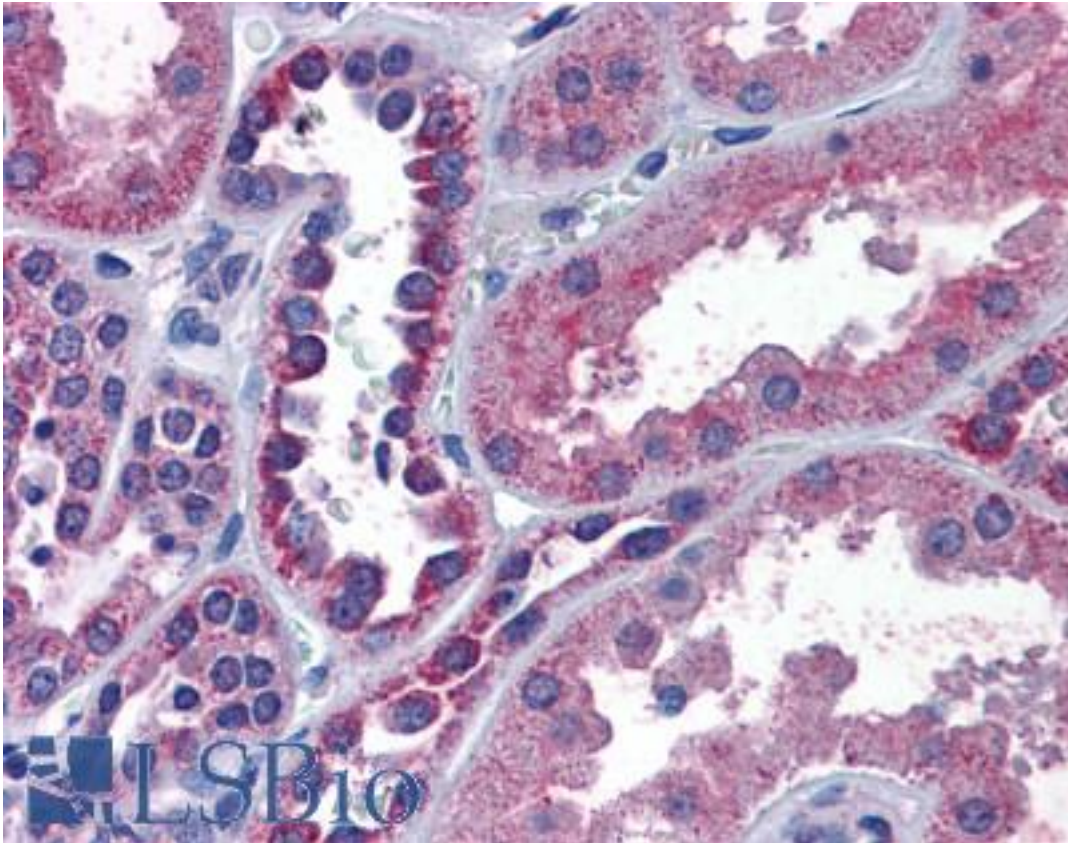


IREB2 / IRP2 Goat anti-Human Polyclonal (Internal) Antibody - LS-B4397 - LSBio

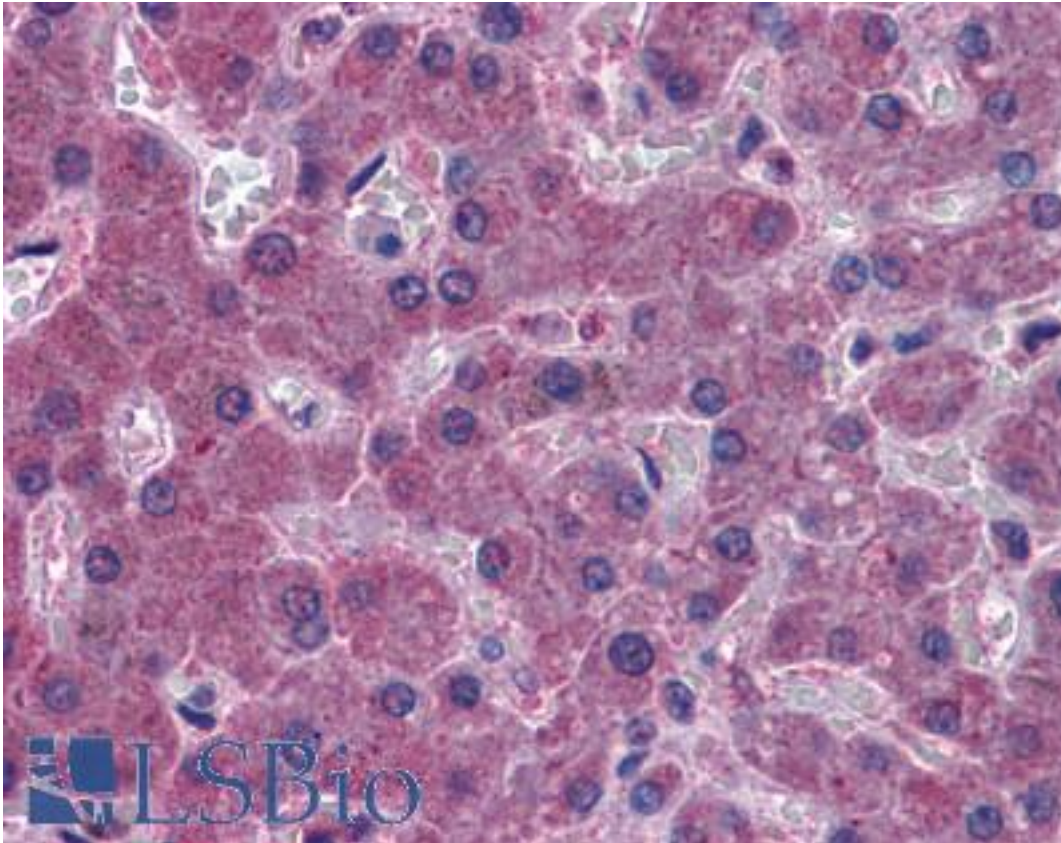
CatalogID:	LS-B4397
Validation:	This antibody replaces catalog number LS-C108131. It has been validated for use in the following assays: IHC-P.
Target:	iron-responsive element binding protein 2 (IREB2)
Synonyms:	IREB2 Antibody, ACO3 Antibody, Iron regulatory protein 2 Antibody, IRP2AD Antibody, IRE-BP 2 Antibody, IRP2 Antibody
Host	IREB2 antibody was produced in Goat
Clonality:	Polyclonal
Immunogen Species:	IREB2 / IRP2 antibody was raised against Human
Antigen Type:	Synthetic peptide
Immunogen:	IREB2 / IRP2 antibody was raised against synthetic peptide C-SIHYEGSEYKLSHGS from an internal region of human IREB2 (NP_004127.1). Percent identity by BLAST analysis: Human, Gorilla, Orangutan, Gibbon, Monkey, Marmoset, Panda, Pig (100%); Elephant, Horse, Rabbit (93%); Bovine (87%); Mouse, Rat, Dog, Opossum, Platypus (80%).
Specificity:	Human IREB2.
Epitope:	Internal
Reactivity:	Human, Gorilla, Orangutan, Gibbon, Monkey, Pig
Predicted Reactivity:	Horse, Rabbit
Purification:	Immunoaffinity purified
Presentation:	Tris-buffered saline, pH 7.3, 0.5% BSA, 0.02% sodium azide
Recommended Storage:	Store at -20°C. Minimize freezing and thawing.
Usage Summary:	Western Blot: Approx 110kD band observed in Human Liver lysates (calculated MW of 105kD according to NP_004127.1). Recommended concentration: 1-3 ug/ml. An additional band of unknown identity was also consistently observed at 60kD. This band was successfully blocked by incubation with the immunizing peptide. Have any further splice variants/modified forms been reported?
Uses:	IHC - Paraffin (3.75 µg/ml), Western blot (1 - 3 µg/ml), ELISA (1:32000) (Optimal dilution to be determined by the researcher)
Size:	50 µg
Concentration:	0.5 mg/ml

Immunohistochemistry Image:



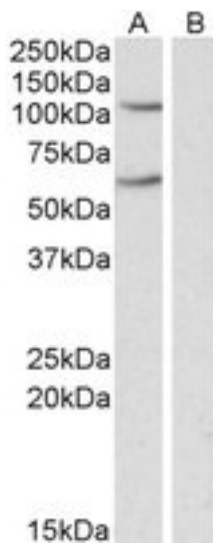
Anti-IREB2 antibody IHC of human kidney. Immunohistochemistry of formalin-fixed, paraffin-embedded tissue after heat-induced antigen retrieval. Antibody LS-B4397 concentration 3.75 ug/ml.

Immunohistochemistry Image:



Anti-IREB2 antibody IHC of human liver. Immunohistochemistry of formalin-fixed, paraffin-embedded tissue after heat-induced antigen retrieval. Antibody LS-B4397 concentration 3.75 ug/ml.

Western Blot Image:



IREB2 antibody (0.3 ug/ml) staining of Human Liver lysate (35 ug protein in RIPA buffer). Primary incubation was 1 hour. Detected by chemiluminescence.

Requested From:

Japan

Laboratory Reagent For In Vitro Research Use Only

Not for resale without prior written consent from LifeSpan BioSciences, Inc.

Created on 9/23/2014

© 2014 LifeSpan BioSciences